

# Converting Colors

Decimal(14335931)

Have a look what the booklet for  
Decimal(14335931) contains.

<b>Decimal(14335931)</b> .....	3
<i><b>Conversions</b></i> .....	4
<i><b>Details</b></i> .....	6
<i><b>Harmonies</b></i> .....	11
<i><b>Previews</b></i> .....	23
<i><b>Color Blindness Simulation</b></i> .....	26
<i><b>CSS Examples</b></i> .....	29

# **Color**

**Decimal(14335931)**

# Conversions

## Conversions Part 1

<b>Format</b>	<b>Color</b>
Hex	DABFBB
RGB	218, 191, 187
RGB Percent	85%, 75%, 73%
CMY	0.1451, 0.2510, 0.2667
CMYK	0.00, 0.12, 0.14, 0.15
HSL	8°, 30%, 79%
HSV	8°, 14%, 85%
XYZ	56.5139, 55.7549, 54.7969
YIQ	198.6170, 17.3760, 4.4800

# Conversions

## Conversions Part 2

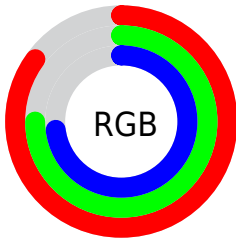
Format	Color
R <sub>Y</sub> B	218, 192, 187
Decimal	14335931
CIE Lab	79.47, 8.92, 5.53
CIE LCh	79, 10.492, 31.782
Yxy	55.7549, 0.3383, 0.3337
Android (android.graphics.Color)	4292526011 (0xFFDABFBB)
YUV	198.6170, -5.7272, 16.9989
Hunter-Lab	74.6692, 4.4278, 8.7578

# Details

The Decimal color **14335931** is a light color, and the websafe version is hex **CCCCCC**. A complement of this color would be **12310234**, and the grayscale version is **13092807**.

A 20% lighter version of the original color is **16775155**, and **10717830** is the 20% darker color. If you saturate the color by 10%, you get **14331045**, and if you desaturate by 10%, it is **14340817**.

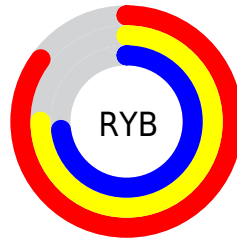
# Distribution



Red (85%)

Green (75%)

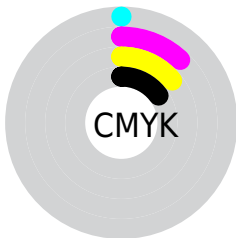
Blue (73%)



Red (85%)

Yellow (75%)

Blue (73%)

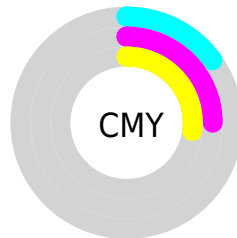


Cyan (0%)

Magenta (12%)

Yellow (14%)

Black (15%)



Cyan (15%)

Magenta (25%)

Yellow (27%)

# Brightness & Saturation Gradients

These gradients show how the Decimal color 14335931 changes by changing the brightness by 10 percent. The first figure shows a shift by +10% for each color and the second figure -10%.

Similar to the brightness gradients but the following saturation gradients show a change of the Decimal color 14335931 by changing the saturation by 10% instead.



 14335931

 14335931

16777215

 12493984

 16775155

 10717830

 8941677

 7297108

 5652541

 4074023

 2627091

 1048576

 0

 14335931

 14335931

 14331045

 14340817

 14326159

 14345703

 14321274

 14350588

 14316388

 14352383

 14311502

 14306616

 14301730

 14296845

 14294016

# Harmonies

## Analogous

The Analogous color harmony consists of three colors that are next to each other on the color wheel.



14270149



14335931



14008756

# Triad

The Triadic color harmony groups three colors that are evenly spaced from another and form a triangle on the color wheel.



14335931



12044987



12371416

# Complementary

The Complementary color scheme is a pair of colors which are on the opposite of each other on the color wheel.



14335931



12310234

# Split Complementary

Split-complementary colors differ from the complementary color scheme. The scheme consists of three colors, the original color and two neighbors of the complement color.



11651286



14335931



11520965

# Square

The Square scheme is like the rectangle color scheme, but the four colors are evenly spaced on the color wheel.



14335931



12699572



11389647



13157077

# Rectangle

The Rectangle color scheme consists of four colors that form a rectangle on the color wheel.



14335931



13681586



11389647



12109784

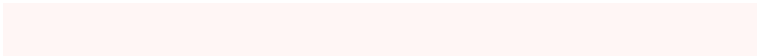


# Sweetspot

The Sweet Spot groups the original color and five complimentary colors.



14335931



16774901



14334934



8419961



0



8421504



# Same Dimension

The Same Dimension uses a secret algorithm to generate beautiful new colors.



14335931



16767444



14339771



7234659



11343360



3016192

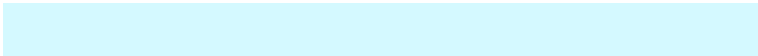


# Inverse Universe

The Inverse Universe completely reimagines the original color for something new.



12310234



13957631



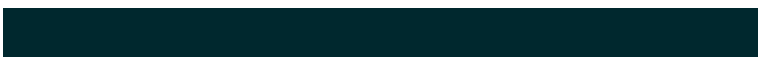
12306394



6515822



38829



10286



# Previews

## White Background



This preview shows how the Decimal color 14335931 looks on a white background.

## Color Contrast Check

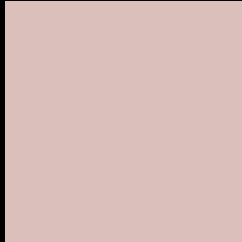
Large Text (above 18pt) WCAG AA × Fail

Any Text WCAG AA × Fail

Large Text (above 18pt) WCAG AAA × Fail

Any Text WCAG AAA × Fail

# Black Background



This preview shows how the Decimal color 14335931 looks on a black background.

## Color Contrast Check

Large Text (above 18pt) WCAG AA ✓ Pass

Any Text WCAG AA ✓ Pass

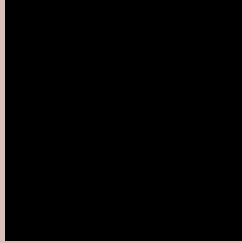
Large Text (above 18pt) WCAG AAA ✓ Pass

Any Text WCAG AAA ✓ Pass

If you want to check with other color combinations, try the [Color Contrast Checker](#).



## Decimal 14335931 Background



This preview shows how black text looks on a background with the Decimal color 14335931.




This preview shows how white text looks on a background with the Decimal color 14335931.

# Color Blindness Simulation

Color vision deficiency is a very complex topic, and I could not describe the different causes any better than Wikipedia does, so if you want to learn more, you should check out their [article about color blindness](#).

## Dichromacy





**Tritanopia**  
14466507

# Trichromacy



**Original Color**  
14335931

**Protanomaly**  
13681341

**Deuteranomaly**  
14401211

**Tritanomaly**  
14401221

# Monochromacy



**Original Color**  
14335931

**Achromatopsia**  
13092807

**Achromatomaly**  
13550787

# CSS Examples

## Text

The CSS property to change the color of the text to Decimal 14335931 is called "color". The color property can be set on classes, ids or directly on the HTML element.

This example shows how text in the color #DABFBB looks like.

```
.text, #text, p{  
    color:#DABFBB  
}
```

If you want to add a text shadow in that color use the text-shadow property, you can generate a text shadow directly with our [CSS Text Shadow Generator](#).

Here you see how black text with a 4 pixel #DABFBB colored shadow looks like.

```
.shadow{ text-shadow: 4px 4px 2px #DABFBB
}
```

## Border

The CSS property to change the border of an element to Decimal 14335931 is called "border". The border property can be set on classes, ids or directly on the HTML element.

This example shows the color as border, it can be applied via the CSS property "border" or "border-color".

```
.border, #border, table{ border:4px solid
#DABFBB }
```

If only the border color should be changed use the property `border-color`.

```
.border{ border-color:#DABFBB }
```

If you want to add a box shadow in that color use:

Here you see how a box with a 4 pixel #DABFBB colored shadow looks like.

```
.boxshadow{ -moz-box-shadow:4px 4px 4px  
4px #DABFBB; -webkit-box-shadow:4px 4px  
4px 4px #DABFBB; box-shadow:4px 4px 4px  
4px #DABFBB }
```

# Background

The CSS property to change the background color of an element to Decimal 14335931 is called "background". The background property can be set on classes, ids or directly on the HTML element.

```
.background, #background, body{  
background:#DABFBB }
```

If only the background color should be changed can be used:

```
.background{ background-color:#DABFBB }
```

This example shows the color as background, it is applied via the CSS property "background".

To optimize and compress your CSS code, you can use our [online CSS compressor and optimizer](#) based on csstidy. If you want to create a linear or radial gradient as background or border, check our [CSS Gradient Generator](#).



Hey! You found this booklet interesting? Support Converting Colors with the new Membership Option!

The pro membership hides all ads, plus gives you double the colors in the color bucket, and more awesome pro features!

**[Learn more, Memberships starting at \\$2.50/m!](#)**

**Follow me  
on Twitter!**

@ConvertingColor