

# Converting Colors

Decimal(14336712)

Have a look what the booklet for  
Decimal(14336712) contains.

<b>Decimal(14336712)</b> .....	3
<i><b>Conversions</b></i> .....	4
<i><b>Details</b></i> .....	6
<i><b>Harmonies</b></i> .....	11
<i><b>Previews</b></i> .....	23
<i><b>Color Blindness Simulation</b></i> .....	26
<i><b>CSS Examples</b></i> .....	29

# **Color**

**Decimal(14336712)**

# Conversions

## Conversions Part 1

Format	Color
Hex	DAC2C8
RGB	218, 194, 200
RGB Percent	85%, 76%, 78%
CMY	0.1451, 0.2392, 0.2157
CMYK	0.00, 0.11, 0.08, 0.15
HSL	345°, 24%, 81%
HSV	345°, 11%, 85%
XYZ	58.6306, 57.6591, 62.6827
YIQ	201.8600, 12.3780, 6.9540

# Conversions

## Conversions Part 2

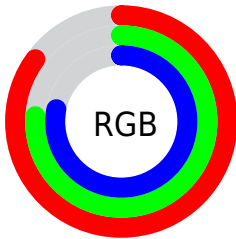
Format	Color
R <sub>Y</sub> B	218, 194, 200
Decimal	14336712
CIE Lab	80.55, 9.47, 0.09
CIE LCh	81, 9.471, 0.526
Yxy	57.6591, 0.3276, 0.3222
Android (android.graphics.Color)	4292526792 (0xFFDAC2C8)
YUV	201.8600, -0.9170, 14.1548
Hunter-Lab	75.9336, 4.9412, 4.2100

# Details

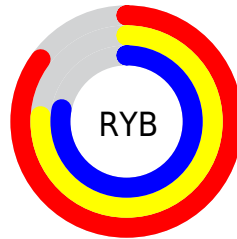
The Decimal color **14336712** is a light color, and the websafe version is hex **CCCCCC**. A complement of this color would be **12770004**, and the grayscale version is **13290186**.

A 20% lighter version of the original color is **16776191**, and **10718354** is the 20% darker color. If you saturate the color by 10%, you get **14331064**, and if you desaturate by 10%, it is **14342360**.

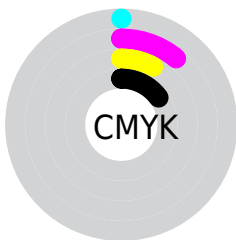
# Distribution



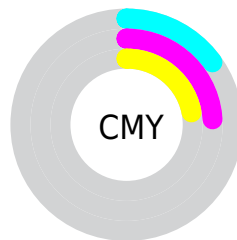
- Red (85%)
- Green (76%)
- Blue (78%)



- Red (85%)
- Yellow (76%)
- Blue (78%)



- Cyan (0%)
- Magenta (11%)
- Yellow (8%)
- Black (15%)



- Cyan (15%)
- Magenta (24%)
- Yellow (22%)

# Brightness & Saturation Gradients

These gradients show how the Decimal color 14336712 changes by changing the brightness by 10 percent. The first figure shows a shift by +10% for each color and the second figure -10%.

Similar to the brightness gradients but the following saturation gradients show a change of the Decimal color 14336712 by changing the saturation by 10% instead.



 14336712

 14336712

16777215

 12494765

 16776191

 10718354

 9007992

 7297632

 5718856

 4140338

 2693149

 1441794

 0

 14336712

 14336712

 14331064

 14342360

 14325415

 14348009

 14320023

 14352377

 14314375

 14352383

 14308726

 14303078

 14297430

 14292037

 14286903

# Harmonies

## Analogous

The Analogous color harmony consists of three colors that are next to each other on the color wheel.



13943761



14336712



14402239

# Triad

The Triadic color harmony groups three colors that are evenly spaced from another and form a triangle on the color wheel.



14336712



12962489



11979735

# Complementary

The Complementary color scheme is a pair of colors which are on the opposite of each other on the color wheel.



14336712



12770004

# Split Complementary

Split-complementary colors differ from the complementary color scheme. The scheme consists of three colors, the original color and two neighbors of the complement color.



11718096



14336712



12307647

# Square

The Square scheme is like the rectangle color scheme, but the four colors are evenly spaced on the color wheel.



14336712



13617078



11849160



12569049

# Rectangle

The Rectangle color scheme consists of four colors that form a rectangle on the color wheel.



14336712



14271675



11849160



11848917



# Sweetspot

The Sweet Spot groups the original color and five complimentary colors.



14336712



16775161



13943514



8419964



0



8421504



# Same Dimension

The Same Dimension uses a secret algorithm to generate beautiful new colors.



14336712



16768742



14338242



7234405



11337771



3014667



# Inverse Universe

The Inverse Universe completely reimagines the original color for something new.



14336712



16768742



12768474



7234405



11337771

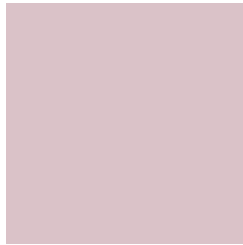


3014667



# Previews

## White Background



This preview shows how the Decimal color 14336712 looks on a white background.

## Color Contrast Check

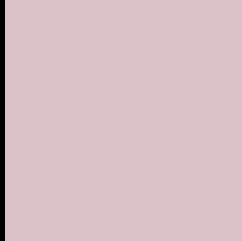
Large Text (above 18pt) WCAG AA × Fail

Any Text WCAG AA × Fail

Large Text (above 18pt) WCAG AAA × Fail

Any Text WCAG AAA × Fail

# Black Background



This preview shows how the Decimal color 14336712 looks on a black background.

## Color Contrast Check

Large Text (above 18pt) WCAG AA ✓ Pass

Any Text WCAG AA ✓ Pass

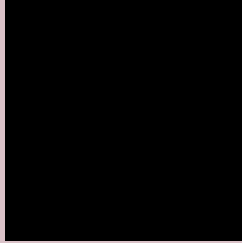
Large Text (above 18pt) WCAG AAA ✓ Pass

Any Text WCAG AAA ✓ Pass

If you want to check with other color combinations, try the [Color Contrast Checker](#).



## Decimal 14336712 Background



This preview shows how black text looks on a background with the Decimal color 14336712.



This preview shows how white text looks on a background with the Decimal color 14336712.

# Color Blindness Simulation

Color vision deficiency is a very complex topic, and I could not describe the different causes any better than Wikipedia does, so if you want to learn more, you should check out their [article about color blindness](#).

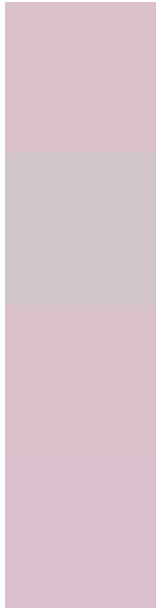
## Dichromacy

	<b>Original Color</b> 14336712
	<b>Protanopia</b> 13354955
	<b>Deuteranopia</b> 14402248



**Tritanopia**  
14402000

# Trichromacy



**Original Color**  
14336712

**Protanomaly**  
13682122

**Deuteranomaly**  
14402248

**Tritanomaly**  
14401997

# Monochromacy



**Original Color**  
14336712

**Achromatopsia**  
13290186

**Achromatomaly**  
13682633

# CSS Examples

## Text

The CSS property to change the color of the text to Decimal 14336712 is called "color". The color property can be set on classes, ids or directly on the HTML element.

This example shows how text in the color #DAC2C8 looks like.

```
.text, #text, p{  
    color:#DAC2C8  
}
```

If you want to add a text shadow in that color use the text-shadow property, you can generate a text shadow directly with our [CSS Text Shadow Generator](#).

Here you see how black text with a 4 pixel #DAC2C8 colored shadow looks like.

```
.shadow{ text-shadow: 4px 4px 2px #DAC2C8  
}
```

## Border

The CSS property to change the border of an element to Decimal 14336712 is called "border". The border property can be set on classes, ids or directly on the HTML element.

This example shows the color as border, it can be applied via the CSS property "border" or "border-color".

```
.border, #border, table{ border:4px solid  
#DAC2C8 }
```

If only the border color should be changed use the property `border-color`.

```
.border{ border-color:#DAC2C8 }
```

If you want to add a box shadow in that color use:

Here you see how a box with a 4 pixel #DAC2C8 colored shadow looks like.

```
.boxshadow{ -moz-box-shadow:4px 4px 4px  
4px #DAC2C8; -webkit-box-shadow:4px 4px  
4px 4px #DAC2C8; box-shadow:4px 4px 4px  
4px #DAC2C8 }
```

# Background

The CSS property to change the background color of an element to Decimal 14336712 is called "background". The background property can be set on classes, ids or directly on the HTML element.

```
.background, #background, body{  
background:#DAC2C8 }
```

If only the background color should be changed can be used:

```
.background{ background-color:#DAC2C8 }
```

This example shows the color as background, it is applied via the CSS property "background".

To optimize and compress your CSS code, you can use our [online CSS compressor and optimizer](#) based on csstidy. If you want to create a linear or radial gradient as background or border, check our [CSS Gradient Generator](#).



Hey! You found this booklet interesting? Support Converting Colors with the new Membership Option!

The pro membership hides all ads, plus gives you double the colors in the color bucket, and more awesome pro features!

**[Learn more, Memberships starting at \\$2.50/m!](#)**

**Follow me  
on Twitter!**

@ConvertingColor