

Converting Colors

Decimal(14375570)

Have a look what the booklet for
Decimal(14375570) contains.

Decimal(14375570)	3
<i>Conversions</i>	4
<i>Details</i>	6
<i>Harmonies</i>	11
<i>Previews</i>	23
<i>Color Blindness Simulation</i>	26
<i>CSS Examples</i>	29

Color

Decimal(14375570)

Conversions

Conversions Part 1

Format	Color
Hex	DB5A92
RGB	219, 90, 146
RGB Percent	86%, 35%, 57%
CMY	0.1412, 0.6471, 0.4275
CMYK	0.00, 0.59, 0.33, 0.14
HSL	334°, 64%, 61%
HSV	334°, 59%, 86%
XYZ	38.0579, 24.4477, 29.9071
YIQ	134.9550, 58.9080, 44.7640

Conversions

Conversions Part 2

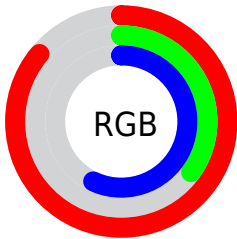
Format	Color
R _Y B	219, 90, 146
Decimal	14375570
CIE Lab	56.53, 55.89, -4.95
CIE LCh	57, 56.105, 354.938
Yxy	24.4477, 0.4118, 0.2645
Android (android.graphics.Color)	4292565650 (0xFFDB5A92)
YUV	134.9550, 5.4452, 73.7075
Hunter-Lab	49.4446, 50.8646, -1.2510

Details

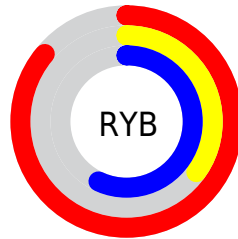
The Decimal color **14375570** is a light color, and the websafe version is hex **CC6699**. The color can be described as light muted rose. A complement of this color would be **5954467**, and the grayscale version is **8882055**.

A 20% lighter version of the original color is **16749000**, and **10493792** is the 20% darker color. If you saturate the color by 10%, you get **14369926**, and if you desaturate by 10%, it is **14381214**.

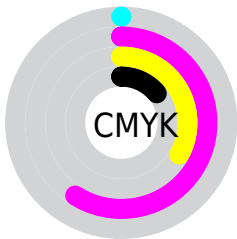
Distribution



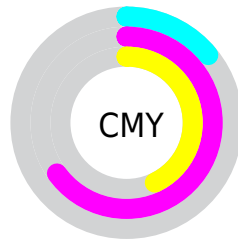
- Red (86%)
- Green (35%)
- Blue (57%)



- Red (86%)
- Yellow (35%)
- Blue (57%)



- Cyan (0%)
- Magenta (59%)
- Yellow (33%)
- Black (14%)



- Cyan (14%)
- Magenta (65%)
- Yellow (43%)

Brightness & Saturation Gradients

These gradients show how the Decimal color 14375570 changes by changing the brightness by 10 percent. The first figure shows a shift by +10% for each color and the second figure -10%.

Similar to the brightness gradients but the following saturation gradients show a change of the Decimal color 14375570 by changing the saturation by 10% instead.

 14375570

 14375570

16777215

 12402296

 16749000

 10493792

 16756196

 8650824

 16763647

 6750258

 16771071

 4980765

 3342338

 0

 14375570

 14375570

 14369926

 14381214

 14364281

 14386859

 14358637

 14392503

 14352992

 14398148

 14352479

 14403536

 14409180

 14414825

 14417909

 14417919

Harmonies

Analogous

The Analogous color harmony consists of three colors that are next to each other on the color wheel.



12282304



14375570



14638433

Triad

The Triadic color harmony groups three colors that are evenly spaced from another and form a triangle on the color wheel.



14375570



7967014



39639

Complementary

The Complementary color scheme is a pair of colors which are on the opposite of each other on the color wheel.



14375570



5954467

Split Complementary

Split-complementary colors differ from the complementary color scheme. The scheme consists of three colors, the original color and two neighbors of the complement color.



40879



14375570



3578444

Square

The Square scheme is like the rectangle color scheme, but the four colors are evenly spaced on the color wheel.



14375570



11043356



40573



37097

Rectangle

The Rectangle color scheme consists of four colors that form a rectangle on the color wheel.



14375570



13920324



40573



40140

Sweetspot

The Sweet Spot groups the original color and five complimentary colors.



14375570



16765413



10574555



8414064



0



8421504

Same Dimension

The Same Dimension uses a secret algorithm to generate beautiful new colors.



14375570



16730777



14377050



7234407



11337803



3014676

Inverse Universe

The Inverse Universe completely reimagines the original color for something new.



14375570



16730777



5952987



7234407



11337803



3014676

Previews

White Background



This preview shows how the Decimal color 14375570 looks on a white background.

Color Contrast Check

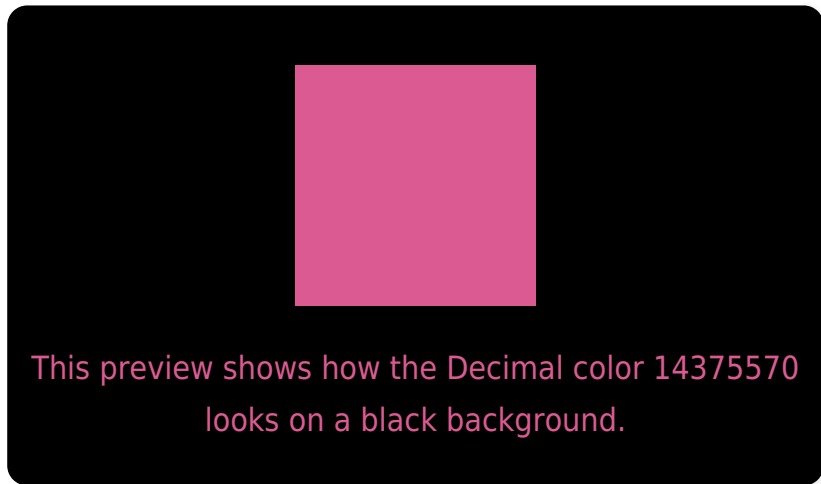
Large Text (above 18pt) WCAG AA ✓ Pass

Any Text WCAG AA × Fail

Large Text (above 18pt) WCAG AAA × Fail

Any Text WCAG AAA × Fail

Black Background



Color Contrast Check

Large Text (above 18pt) WCAG AA ✓ Pass

Any Text WCAG AA ✓ Pass

Large Text (above 18pt) WCAG AAA ✓ Pass

Any Text WCAG AAA × Fail

If you want to check with other color combinations, try the [Color Contrast Checker](#).

Decimal 14375570 Background



This preview shows how black text looks on a background with the Decimal color 14375570.



This preview shows how white text looks on a background with the Decimal color 14375570.

Color Blindness Simulation

Color vision deficiency is a very complex topic, and I could not describe the different causes any better than Wikipedia does, so if you want to learn more, you should check out their [article about color blindness](#).

Dichromacy

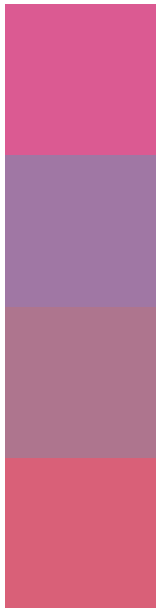


Original Color
14375570

Protanopia
8292271

Deuteranopia
9733260

Trichromacy



Original Color
14375570

Protanomaly
10516388

Deuteranomaly
11433358

Tritanomaly
14246008

Monochromacy



Original Color
14375570

Achromatopsia
8882055

Achromatomaly
10909579

CSS Examples

Text

The CSS property to change the color of the text to Decimal 14375570 is called "color". The color property can be set on classes, ids or directly on the HTML element.

This example shows how text in the color #DB5A92 looks like.

```
.text, #text, p{  
    color:#DB5A92  
}
```

If you want to add a text shadow in that color use the text-shadow property, you can generate a text shadow directly with our [CSS Text Shadow Generator](#).

Here you see how black text with a 4 pixel #DB5A92 colored shadow looks like.

```
.shadow{ text-shadow: 4px 4px 2px #DB5A92
}
```

Border

The CSS property to change the border of an element to Decimal 14375570 is called "border". The border property can be set on classes, ids or directly on the HTML element.

This example shows the color as border, it can be applied via the CSS property "border" or "border-color".

```
.border, #border, table{ border:4px solid
#DB5A92 }
```

If only the border color should be changed use the property `border-color`.

```
.border{ border-color:#DB5A92 }
```

If you want to add a box shadow in that color use:

Here you see how a box with a 4 pixel #DB5A92 colored shadow looks like.

```
.boxshadow{ -moz-box-shadow:4px 4px 4px  
4px #DB5A92; -webkit-box-shadow:4px 4px  
4px 4px #DB5A92; box-shadow:4px 4px 4px  
4px #DB5A92 }
```

Background

The CSS property to change the background color of an element to Decimal 14375570 is called "background". The background property can be set on classes, ids or directly on the HTML element.

```
.background, #background, body{  
background:#DB5A92 }
```

If only the background color should be changed can be used:

```
.background{ background-color:#DB5A92 }
```

This example shows the color as background, it is applied via the CSS property "background".

To optimize and compress your CSS code, you can use our [online CSS compressor and optimizer](#) based on csstidy. If you want to create a linear or radial gradient as background or border, check our [CSS Gradient Generator](#).

Hey! You found this booklet interesting? Support Converting Colors with the new Membership Option!

The pro membership hides all ads, plus gives you double the colors in the color bucket, and more awesome pro features!

[Learn more, Memberships starting at \\$2.50/m!](#)

**Follow me
on Twitter!**

@ConvertingColor