

Converting Colors

Decimal(14387352)

Have a look what the booklet for
Decimal(14387352) contains.

Decimal(14387352)	3
<i>Conversions</i>	4
<i>Details</i>	6
<i>Harmonies</i>	11
<i>Previews</i>	23
<i>Color Blindness Simulation</i>	26
<i>CSS Examples</i>	29

Color

Decimal(14387352)

Conversions

Conversions Part 1

Format	Color
Hex	DB8898
RGB	219, 136, 152
RGB Percent	86%, 53%, 60%
CMY	0.1412, 0.4667, 0.4039
CMYK	0.00, 0.38, 0.31, 0.14
HSL	348°, 54%, 70%
HSV	348°, 38%, 86%
XYZ	43.6851, 34.9354, 34.1465
YIQ	162.6410, 44.3320, 22.5720

Conversions

Conversions Part 2

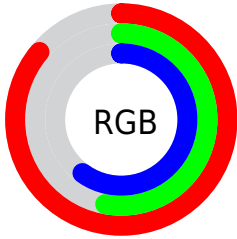
Format	Color
R _Y B	219, 136, 152
Decimal	14387352
CIE Lab	65.70, 33.72, 4.98
CIE LCh	66, 34.082, 8.399
Yxy	34.9354, 0.3874, 0.3098
Android (android.graphics.Color)	4292577432 (0xFFDB8898)
YUV	162.6410, -5.2460, 49.4268
Hunter-Lab	59.1062, 28.4927, 7.1216

Details

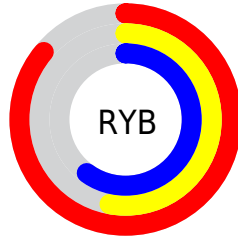
The Decimal color **14387352** is a light color, and the websafe version is hex **FF9999**. A complement of this color would be **8969163**, and the grayscale version is **10724259**.

A 20% lighter version of the original color is **16760526**, and **10638693** is the 20% darker color. If you saturate the color by 10%, you get **14381702**, and if you desaturate by 10%, it is **14393002**.

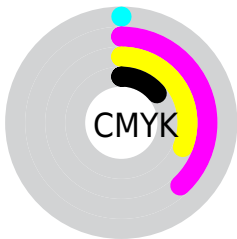
Distribution



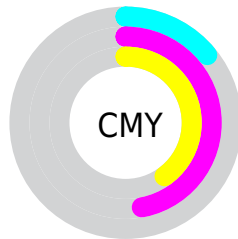
- Red (86%)
- Green (53%)
- Blue (60%)



- Red (86%)
- Yellow (53%)
- Blue (60%)



- Cyan (0%)
- Magenta (38%)
- Yellow (31%)
- Black (14%)

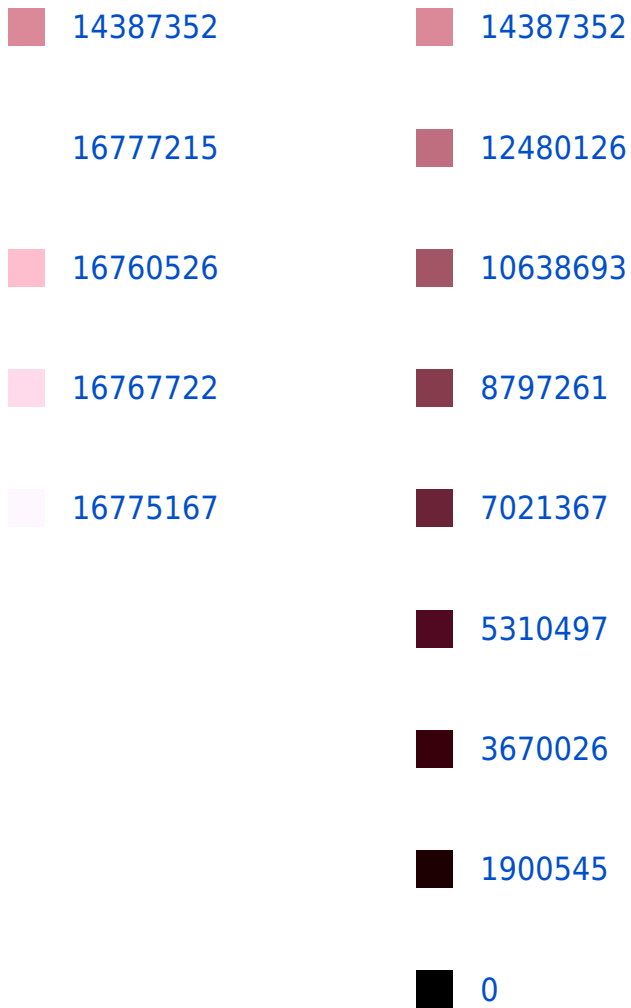


- Cyan (14%)
- Magenta (47%)
- Yellow (40%)

Brightness & Saturation Gradients

These gradients show how the Decimal color 14387352 changes by changing the brightness by 10 percent. The first figure shows a shift by +10% for each color and the second figure -10%.

Similar to the brightness gradients but the following saturation gradients show a change of the Decimal color 14387352 by changing the saturation by 10% instead.



14387352 14387352

 14381702

 14393002

 14376053

 14398651

 14370403

 14404301

 14364753

 14409951

 14359104

 14415344

 14353710

 14417919

 14352426

Harmonies

Analogous

The Analogous color harmony consists of three colors that are next to each other on the color wheel.



13470647



14387352



14191995

Triad

The Triadic color harmony groups three colors that are evenly spaced from another and form a triangle on the color wheel.



14387352



9087343



5286360

Complementary

The Complementary color scheme is a pair of colors which are on the opposite of each other on the color wheel.



14387352



8969163

Split Complementary

Split-complementary colors differ from the complementary color scheme. The scheme consists of three colors, the original color and two neighbors of the complement color.



2797253



14387352



6663816

Square

The Square scheme is like the rectangle color scheme, but the four colors are evenly spaced on the color wheel.



14387352



11313506



4108455



8560860

Rectangle

The Rectangle color scheme consists of four colors that form a rectangle on the color wheel.



14387352



13538156



4108455



4238291

Sweetspot

The Sweet Spot groups the original color and five complimentary colors.



14387352



16770024



13273307



8417138



0



8421504

Same Dimension

The Same Dimension uses a secret algorithm to generate beautiful new colors.



14387352



16747682



14393736



7234405



11337761



3014665

Inverse Universe

The Inverse Universe completely reimagines the original color for something new.



14387352



16747682



8962779



7234405



11337761



3014665

Previews

White Background



This preview shows how the Decimal color 14387352 looks on a white background.

Color Contrast Check

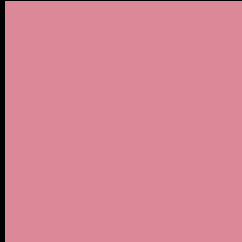
Large Text (above 18pt) WCAG AA × Fail

Any Text WCAG AA × Fail

Large Text (above 18pt) WCAG AAA × Fail

Any Text WCAG AAA × Fail

Black Background



This preview shows how the Decimal color 14387352 looks on a black background.

Color Contrast Check

Large Text (above 18pt) WCAG AA ✓ Pass

Any Text WCAG AA ✓ Pass

Large Text (above 18pt) WCAG AAA ✓ Pass

Any Text WCAG AAA ✓ Pass

If you want to check with other color combinations, try the [Color Contrast Checker](#).

Decimal 14387352 Background



This preview shows how black text looks on a background with the Decimal color 14387352.




This preview shows how white text looks on a background with the Decimal color 14387352.

Color Blindness Simulation

Color vision deficiency is a very complex topic, and I could not describe the different causes any better than Wikipedia does, so if you want to learn more, you should check out their [article about color blindness](#).

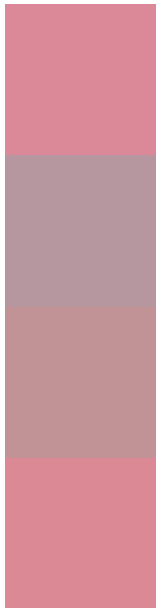
Dichromacy





Tritanopia
14387603

Trichromacy



Original Color
14387352

Protanomaly
11966368

Deuteranomaly
12751766

Tritanomaly
14387605

Monochromacy



Original Color
14387352

Achromatopsia
10724259

Achromatomaly
12032415

CSS Examples

Text

The CSS property to change the color of the text to Decimal 14387352 is called "color". The color property can be set on classes, ids or directly on the HTML element.

This example shows how text in the color #DB8898 looks like.

```
.text, #text, p{  
  color:#DB8898  
}
```

If you want to add a text shadow in that color use the text-shadow property, you can generate a text shadow directly with our [CSS Text Shadow Generator](#).

Here you see how black text with a 4 pixel #DB8898 colored shadow looks like.

```
.shadow{ text-shadow: 4px 4px 2px #DB8898
}
```

Border

The CSS property to change the border of an element to Decimal 14387352 is called "border". The border property can be set on classes, ids or directly on the HTML element.

This example shows the color as border, it can be applied via the CSS property "border" or "border-color".

```
.border, #border, table{ border:4px solid
#DB8898 }
```

If only the border color should be changed use the property `border-color`.

```
.border{ border-color:#DB8898 }
```

If you want to add a box shadow in that color use:

Here you see how a box with a 4 pixel #DB8898 colored shadow looks like.

```
.boxshadow{ -moz-box-shadow:4px 4px 4px  
4px #DB8898; -webkit-box-shadow:4px 4px  
4px 4px #DB8898; box-shadow:4px 4px 4px  
4px #DB8898 }
```

Background

The CSS property to change the background color of an element to Decimal 14387352 is called "background". The background property can be set on classes, ids or directly on the HTML element.

```
.background, #background, body{  
background:#DB8898 }
```

If only the background color should be changed can be used:

```
.background{ background-color:#DB8898 }
```

This example shows the color as background, it is applied via the CSS property "background".

To optimize and compress your CSS code, you can use our [online CSS compressor and optimizer](#) based on csstidy. If you want to create a linear or radial gradient as background or border, check our [CSS Gradient Generator](#).

Hey! You found this booklet interesting? Support Converting Colors with the new Membership Option!

The pro membership hides all ads, plus gives you double the colors in the color bucket, and more awesome pro features!

[Learn more, Memberships starting at \\$2.50/m!](#)

**Follow me
on Twitter!**

@ConvertingColor