

Converting Colors

Decimal(14391463)

Have a look what the booklet for
Decimal(14391463) contains.

Decimal(14391463)	3
<i>Conversions</i>	4
<i>Details</i>	6
<i>Harmonies</i>	11
<i>Previews</i>	23
<i>Color Blindness Simulation</i>	26
<i>CSS Examples</i>	29

Color

Decimal(14391463)

Conversions

Conversions Part 1

Format	Color
Hex	DB98A7
RGB	219, 152, 167
RGB Percent	86%, 60%, 65%
CMY	0.1412, 0.4039, 0.3451
CMYK	0.00, 0.31, 0.24, 0.14
HSL	347°, 48%, 73%
HSV	347°, 31%, 86%
XYZ	47.4167, 40.3066, 41.8400
YIQ	173.7430, 35.1170, 18.8690

Conversions

Conversions Part 2

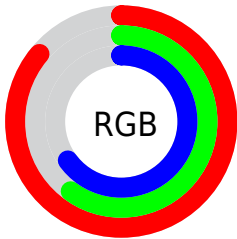
Format	Color
R _Y B	219, 152, 167
Decimal	14391463
CIE Lab	69.69, 27.21, 2.33
CIE LCh	70, 27.311, 4.902
Yxy	40.3066, 0.3660, 0.3111
Android (android.graphics.Color)	4292581543 (0xFFDB98A7)
YUV	173.7430, -3.3243, 39.6904
Hunter-Lab	63.4874, 22.2128, 5.3674

Details

The Decimal color **14391463** is a light color, and the websafe version is hex **CC9999**. A complement of this color would be **10017740**, and the grayscale version is **11447982**.

A 20% lighter version of the original color is **16764894**, and **10708083** is the 20% darker color. If you saturate the color by 10%, you get **14385814**, and if you desaturate by 10%, it is **14397112**.

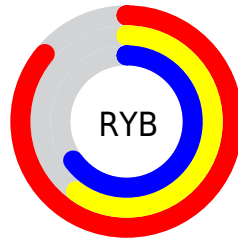
Distribution



Red (86%)

Green (60%)

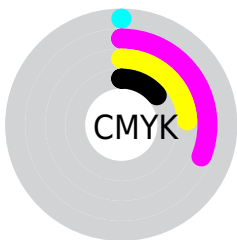
Blue (65%)



Red (86%)

Yellow (60%)

Blue (65%)

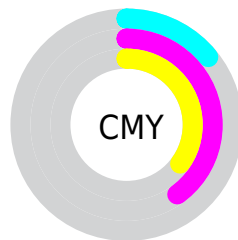


Cyan (0%)

Magenta (31%)

Yellow (24%)

Black (14%)



Cyan (14%)

Magenta (40%)

Yellow (35%)

Brightness & Saturation Gradients

These gradients show how the Decimal color 14391463 changes by changing the brightness by 10 percent. The first figure shows a shift by +10% for each color and the second figure -10%.

Similar to the brightness gradients but the following saturation gradients show a change of the Decimal color 14391463 by changing the saturation by 10% instead.

 14391463

 14391463

16777215


 12549773

 16764894

 10708083

 16772091

 8932443

 7156803

 5446957

 3802393

 2555905

 0

 14391463

 14391463

 14385814

 14397112

 14380165

 14402761

 14374516

 14408410

 14368867

 14414059

 14363218

 14417916

 14357825

 14417919

 14352433

Harmonies

Analogous

The Analogous color harmony consists of three colors that are next to each other on the color wheel.



13540288



14391463



14392207

Triad

The Triadic color harmony groups three colors that are evenly spaced from another and form a triangle on the color wheel.



14391463



10334593



7385814

Complementary

The Complementary color scheme is a pair of colors which are on the opposite of each other on the color wheel.



14391463



10017740

Split Complementary

Split-complementary colors differ from the complementary color scheme. The scheme consists of three colors, the original color and two neighbors of the complement color.



6272966



14391463



8435348

Square

The Square scheme is like the rectangle color scheme, but the four colors are evenly spaced on the color wheel.



14391463



12102265



6863022



9546715

Rectangle

The Rectangle color scheme consists of four colors that form a rectangle on the color wheel.



14391463



13868931



6863022



6796498

Sweetspot

The Sweet Spot groups the original color and five complimentary colors.



14391463



16771309



13342939



8417653



0



8421504

Same Dimension

The Same Dimension uses a secret algorithm to generate beautiful new colors.



14391463



16753078



14396056



7234405



11337767



3014666

Inverse Universe

The Inverse Universe completely reimagines the original color for something new.



14391463



16753078



10013147



7234405



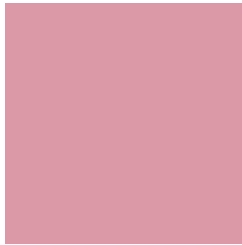
11337767



3014666

Previews

White Background



This preview shows how the Decimal color 14391463 looks on a white background.

Color Contrast Check

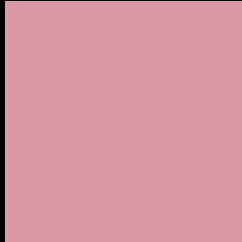
Large Text (above 18pt) WCAG AA × Fail

Any Text WCAG AA × Fail

Large Text (above 18pt) WCAG AAA × Fail

Any Text WCAG AAA × Fail

Black Background



This preview shows how the Decimal color 14391463 looks on a black background.

Color Contrast Check

Large Text (above 18pt) WCAG AA ✓ Pass

Any Text WCAG AA ✓ Pass

Large Text (above 18pt) WCAG AAA ✓ Pass

Any Text WCAG AAA ✓ Pass

If you want to check with other color combinations, try the [Color Contrast Checker](#).

Decimal 14391463 Background



This preview shows how black text looks on a background with the Decimal color 14391463.




This preview shows how white text looks on a background with the Decimal color 14391463.

Color Blindness Simulation

Color vision deficiency is a very complex topic, and I could not describe the different causes any better than Wikipedia does, so if you want to learn more, you should check out their [article about color blindness](#).

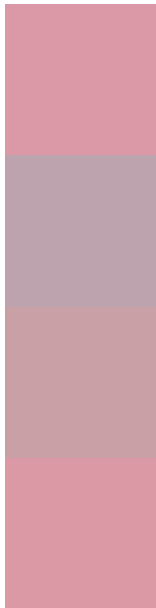
Dichromacy





Tritanopia
14391460

Trichromacy



Original Color
14391463

Protanomaly
12428205

Deuteranomaly
13148326

Tritanomaly
14391461

Monochromacy



Original Color
14391463

Achromatopsia
11447982

Achromatomaly
12494507

CSS Examples

Text

The CSS property to change the color of the text to Decimal 14391463 is called "color". The color property can be set on classes, ids or directly on the HTML element.

This example shows how text in the color #DB98A7 looks like.

```
.text, #text, p{  
    color:#DB98A7  
}
```

If you want to add a text shadow in that color use the text-shadow property, you can generate a text shadow directly with our [CSS Text Shadow Generator](#).

Here you see how black text with a 4 pixel #DB98A7 colored shadow looks like.

```
.shadow{ text-shadow: 4px 4px 2px #DB98A7
}
```

Border

The CSS property to change the border of an element to Decimal 14391463 is called "border". The border property can be set on classes, ids or directly on the HTML element.

This example shows the color as border, it can be applied via the CSS property "border" or "border-color".

```
.border, #border, table{ border:4px solid
#DB98A7 }
```

If only the border color should be changed use the property `border-color`.

```
.border{ border-color:#DB98A7 }
```

If you want to add a box shadow in that color use:

Here you see how a box with a 4 pixel #DB98A7 colored shadow looks like.

```
.boxshadow{ -moz-box-shadow:4px 4px 4px  
4px #DB98A7; -webkit-box-shadow:4px 4px  
4px 4px #DB98A7; box-shadow:4px 4px 4px  
4px #DB98A7 }
```

Background

The CSS property to change the background color of an element to Decimal 14391463 is called "background". The background property can be set on classes, ids or directly on the HTML element.

```
.background, #background, body{  
background:#DB98A7 }
```

If only the background color should be changed can be used:

```
.background{ background-color:#DB98A7 }
```

This example shows the color as background, it is applied via the CSS property "background".

To optimize and compress your CSS code, you can use our [online CSS compressor and optimizer](#) based on csstidy. If you want to create a linear or radial gradient as background or border, check our [CSS Gradient Generator](#).

Hey! You found this booklet interesting? Support Converting Colors with the new Membership Option!

The pro membership hides all ads, plus gives you double the colors in the color bucket, and more awesome pro features!

[Learn more, Memberships starting at \\$2.50/m!](#)

**Follow me
on Twitter!**

@ConvertingColor