

Converting Colors

Decimal(14393495)

Have a look what the booklet for
Decimal(14393495) contains.

| | |
|--|----|
| Decimal(14393495) | 3 |
| <i>Conversions</i> | 4 |
| <i>Details</i> | 6 |
| <i>Harmonies</i> | 11 |
| <i>Previews</i> | 23 |
| <i>Color Blindness Simulation</i> | 26 |
| <i>CSS Examples</i> | 29 |

Color

Decimal(14393495)

Conversions

Conversions Part 1

| Format | Color |
|-------------|---------------------------|
| Hex | DBA097 |
| RGB | 219, 160, 151 |
| RGB Percent | 86%, 63%, 59% |
| CMY | 0.1412, 0.3725, 0.4078 |
| CMYK | 0.00, 0.27, 0.31, 0.14 |
| HSL | 8°, 49%, 73% |
| HSV | 8°, 31%, 86% |
| XYZ | 47.3701, 42.4360, 34.9725 |
| YIQ | 176.6150, 38.0530, 9.7090 |

Conversions

Conversions Part 2

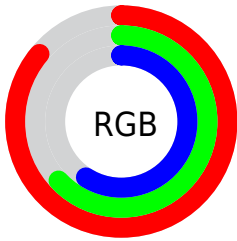
| Format | Color |
|-------------------------------------|--------------------------------|
| R _Y B | 219, 161, 151 |
| Decimal | 14393495 |
| CIE Lab | 71.17, 20.69, 13.33 |
| CIE LCh | 71, 24.608, 32.788 |
| Yxy | 42.4360, 0.3796, 0.3401 |
| Android (android.graphics.Color) | 4292583575 (0xFFDBA097) |
| YUV | 176.6150, -12.6282, 37.1716 |
| Hunter-Lab | 65.1430, 15.8000, 13.7698 |

Details

The Decimal color **14393495** is a light color, and the websafe version is hex **CC9999**. A complement of this color would be **9949915**, and the grayscale version is **11645361**.

A 20% lighter version of the original color is **16766925**, and **10710116** is the 20% darker color. If you saturate the color by 10%, you get **14388609**, and if you desaturate by 10%, it is **14398381**.

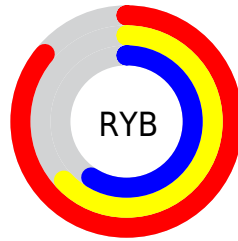
Distribution



Red (86%)

Green (63%)

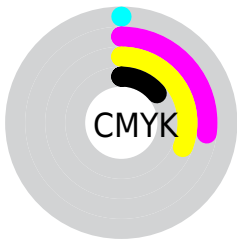
Blue (59%)



Red (86%)

Yellow (63%)

Blue (59%)

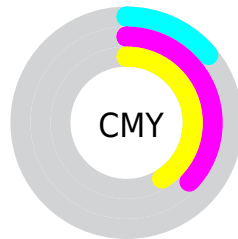


Cyan (0%)

Magenta (27%)

Yellow (31%)

Black (14%)



Cyan (14%)

Magenta (37%)

Yellow (41%)

Brightness & Saturation Gradients

These gradients show how the Decimal color 14393495 changes by changing the brightness by 10 percent. The first figure shows a shift by +10% for each color and the second figure -10%.

Similar to the brightness gradients but the following saturation gradients show a change of the Decimal color 14393495 by changing the saturation by 10% instead.

 14393495

 14393495

16777215

 12486269

 16766925

 10710116

 16774377

 8868940

 7158838

 5448992

 3805193

 2424832

 0

 14393495

 14393495

 14388609

 14398381

 14383723

 14403267

 14378837

 14408153

 14373951

 14413039

 14369066

 14417919

 14364180

 14359808

Harmonies

Analogous

The Analogous color harmony consists of three colors that are next to each other on the color wheel.



14327469



14393495



13674119

Triad

The Triadic color harmony groups three colors that are evenly spaced from another and form a triangle on the color wheel.



14393495



9157017



9875675

Complementary

The Complementary color scheme is a pair of colors which are on the opposite of each other on the color wheel.



14393495



9949915

Split Complementary

Split-complementary colors differ from the complementary color scheme. The scheme consists of three colors, the original color and two neighbors of the complement color.



8042197



14393495



7715760

Square

The Square scheme is like the rectangle color scheme, but the four colors are evenly spaced on the color wheel.



14393495



10794120



7191238



11905236

Rectangle

The Rectangle color scheme consists of four colors that form a rectangle on the color wheel.



14393495



12888962



7191238



9220826

Sweetspot

The Sweet Spot groups the original color and five complimentary colors.



14393495



16772072



14391251



8418161



0



8421504

Same Dimension

The Same Dimension uses a secret algorithm to generate beautiful new colors.



14393495



16756129



14401943



7234659



11343616



3016192

Inverse Universe

The Inverse Universe completely reimagines the original color for something new.



9949915



10613759



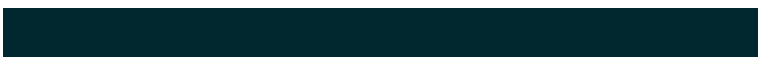
9941467



6515822



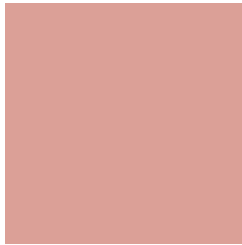
38573



10286

Previews

White Background



This preview shows how the Decimal color 14393495 looks on a white background.

Color Contrast Check

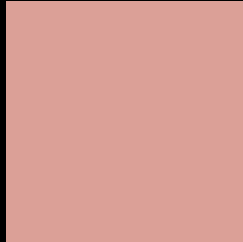
Large Text (above 18pt) WCAG AA × Fail

Any Text WCAG AA × Fail

Large Text (above 18pt) WCAG AAA × Fail

Any Text WCAG AAA × Fail

Black Background



This preview shows how the Decimal color 14393495 looks on a black background.

Color Contrast Check

Large Text (above 18pt) WCAG AA ✓ Pass

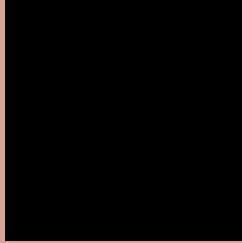
Any Text WCAG AA ✓ Pass

Large Text (above 18pt) WCAG AAA ✓ Pass

Any Text WCAG AAA ✓ Pass

If you want to check with other color combinations, try the [Color Contrast Checker](#).

Decimal 14393495 Background



This preview shows how black text looks on a background with the Decimal color 14393495.




This preview shows how white text looks on a background with the Decimal color 14393495.

Color Blindness Simulation

Color vision deficiency is a very complex topic, and I could not describe the different causes any better than Wikipedia does, so if you want to learn more, you should check out their [article about color blindness](#).

Dichromacy





Tritanopia
14523817

Trichromacy



Original Color
14393495

Protanomaly
12822939

Deuteranomaly
13608342

Tritanomaly
14458530

Monochromacy



Original Color
14393495

Achromatopsia
11645361

Achromatomaly
12626856

CSS Examples

Text

The CSS property to change the color of the text to Decimal 14393495 is called "color". The color property can be set on classes, ids or directly on the HTML element.

This example shows how text in the color #DBA097 looks like.

```
.text, #text, p{  
  color:#DBA097  
}
```

If you want to add a text shadow in that color use the text-shadow property, you can generate a text shadow directly with our [CSS Text Shadow Generator](#).

Here you see how black text with a 4 pixel #DBA097 colored shadow looks like.

```
.shadow{ text-shadow: 4px 4px 2px #DBA097
}
```

Border

The CSS property to change the border of an element to Decimal 14393495 is called "border". The border property can be set on classes, ids or directly on the HTML element.

This example shows the color as border, it can be applied via the CSS property "border" or "border-color".

```
.border, #border, table{ border:4px solid
#DBA097 }
```

If only the border color should be changed use the property `border-color`.

```
.border{ border-color:#DBA097 }
```

If you want to add a box shadow in that color use:

Here you see how a box with a 4 pixel #DBA097 colored shadow looks like.

```
.boxshadow{ -moz-box-shadow:4px 4px 4px  
4px #DBA097; -webkit-box-shadow:4px 4px  
4px 4px #DBA097; box-shadow:4px 4px 4px  
4px #DBA097 }
```

Background

The CSS property to change the background color of an element to Decimal 14393495 is called "background". The background property can be set on classes, ids or directly on the HTML element.

```
.background, #background, body{  
background:#DBA097 }
```

If only the background color should be changed can be used:

```
.background{ background-color:#DBA097 }
```

This example shows the color as background, it is applied via the CSS property "background".

To optimize and compress your CSS code, you can use our [online CSS compressor and optimizer](#) based on csstidy. If you want to create a linear or radial gradient as background or border, check our [CSS Gradient Generator](#).

Hey! You found this booklet interesting? Support Converting Colors with the new Membership Option!

The pro membership hides all ads, plus gives you double the colors in the color bucket, and more awesome pro features!

[Learn more, Memberships starting at \\$2.50/m!](#)

**Follow me
on Twitter!**

@ConvertingColor