

Converting Colors

Decimal(14395014)

Have a look what the booklet for
Decimal(14395014) contains.

Decimal(14395014)	3
<i>Conversions</i>	4
<i>Details</i>	6
<i>Harmonies</i>	11
<i>Previews</i>	23
<i>Color Blindness Simulation</i>	26
<i>CSS Examples</i>	29

Color

Decimal(14395014)

Conversions

Conversions Part 1

Format	Color
Hex	DBA686
RGB	219, 166, 134
RGB Percent	86%, 65%, 53%
CMY	0.1412, 0.3490, 0.4745
CMYK	0.00, 0.24, 0.39, 0.14
HSL	23°, 54%, 69%
HSV	23°, 39%, 86%
XYZ	47.1527, 44.0537, 28.5723
YIQ	178.1990, 41.8600, 1.2840

Conversions

Conversions Part 2

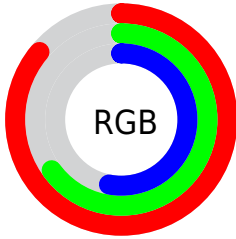
Format	Color
RYB	219, 185, 134
Decimal	14395014
CIELab	72.26, 15.37, 24.14
CIELCh	72, 28.612, 57.519
Yxy	44.0537, 0.3937, 0.3678
Android (android.graphics.Color)	4292585094 (0xFFDBA686)
YUV	178.1990, -21.7901, 35.7825
Hunter-Lab	66.3730, 10.6573, 20.9379

Details

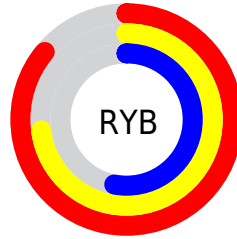
The Decimal color **14395014** is a light color, and the websafe version is hex **CC9966**. A complement of this color would be **8829915**, and the grayscale version is **11711154**.

A 20% lighter version of the original color is **16768443**, and **10646100** is the 20% darker color. If you saturate the color by 10%, you get **14391408**, and if you desaturate by 10%, it is **14398620**.

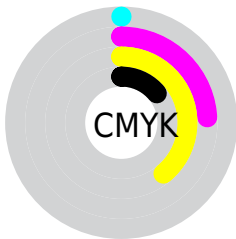
Distribution



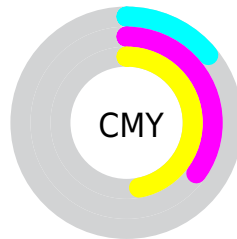
- Red (86%)
- Green (65%)
- Blue (53%)



- Red (86%)
- Yellow (73%)
- Blue (53%)



- Cyan (0%)
- Magenta (24%)
- Yellow (39%)
- Black (14%)



- Cyan (14%)
- Magenta (35%)
- Yellow (47%)

Brightness & Saturation Gradients

These gradients show how the Decimal color 14395014 changes by changing the brightness by 10 percent. The first figure shows a shift by +10% for each color and the second figure -10%.

Similar to the brightness gradients but the following saturation gradients show a change of the Decimal color 14395014 by changing the saturation by 10% instead.

 14395014

 14395014

16777215

 12487789

 16768443

 10646100

 16775895

 8870205

 16777204

 7094822

 5384977

 3741184

 2228224

 0

 14395014

 14395014

14391408

14398620

14388058

14401970

14384452

14405576

14380846

14409182

14377497

14412532

14373891

14416127

14373376

14417919

Harmonies

Analogous

The Analogous color harmony consists of three colors that are next to each other on the color wheel.



15114138



14395014



13021053

Triad

The Triadic color harmony groups three colors that are evenly spaced from another and form a triangle on the color wheel.



14395014



7389358



11709407

Complementary

The Complementary color scheme is a pair of colors which are on the opposite of each other on the color wheel.



14395014



8829915

Split Complementary

Split-complementary colors differ from the complementary color scheme. The scheme consists of three colors, the original color and two neighbors of the complement color.



9286885



14395014



6406088

Square

The Square scheme is like the rectangle color scheme, but the four colors are evenly spaced on the color wheel.



14395014



9223572



7125980



13738958

Rectangle

The Rectangle color scheme consists of four colors that form a rectangle on the color wheel.



14395014



11842687



7125980



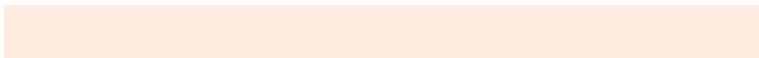
10923747

Sweetspot

The Sweet Spot groups the original color and five complimentary colors.



14395014



16772320



14386876



8418414



0



8421504

Same Dimension

The Same Dimension uses a secret algorithm to generate beautiful new colors.



14395014



16757895



14405766



7235427



11354368



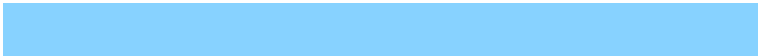
3019008

Inverse Universe

The Inverse Universe completely reimagines the original color for something new.



8829915



8901375



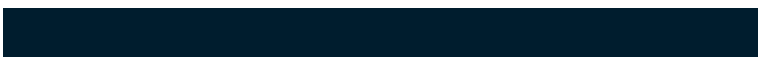
8819163



6515310



27821



7470

Previews

White Background



This preview shows how the Decimal color 14395014 looks on a white background.

Color Contrast Check

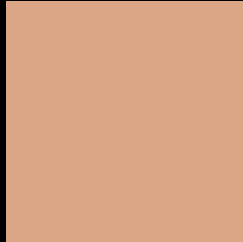
Large Text (above 18pt) WCAG AA × Fail

Any Text WCAG AA × Fail

Large Text (above 18pt) WCAG AAA × Fail

Any Text WCAG AAA × Fail

Black Background



This preview shows how the Decimal color 14395014 looks on a black background.

Color Contrast Check

Large Text (above 18pt) WCAG AA ✓ Pass

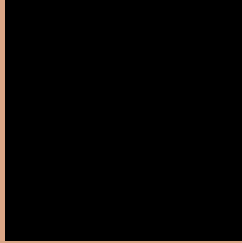
Any Text WCAG AA ✓ Pass

Large Text (above 18pt) WCAG AAA ✓ Pass

Any Text WCAG AAA ✓ Pass

If you want to check with other color combinations, try the [Color Contrast Checker](#).

Decimal 14395014 Background



This preview shows how black text looks on a background with the Decimal color 14395014.




This preview shows how white text looks on a background with the Decimal color 14395014.

Color Blindness Simulation

Color vision deficiency is a very complex topic, and I could not describe the different causes any better than Wikipedia does, so if you want to learn more, you should check out their [article about color blindness](#).

Dichromacy





Tritanopia
14655917

Trichromacy



Original Color
14395014

Protanomaly
13151625

Deuteranomaly
14002565

Tritanomaly
14590879

Monochromacy



Original Color
14395014

Achromatopsia
11711154

Achromatomaly
12693154

CSS Examples

Text

The CSS property to change the color of the text to Decimal 14395014 is called "color". The color property can be set on classes, ids or directly on the HTML element.

This example shows how text in the color #DBA686 looks like.

```
.text, #text, p{  
  color:#DBA686  
}
```

If you want to add a text shadow in that color use the text-shadow property, you can generate a text shadow directly with our [CSS Text Shadow Generator](#).

Here you see how black text with a 4 pixel #DBA686 colored shadow looks like.

```
.shadow{ text-shadow: 4px 4px 2px #DBA686
}
```

Border

The CSS property to change the border of an element to Decimal 14395014 is called "border". The border property can be set on classes, ids or directly on the HTML element.

This example shows the color as border, it can be applied via the CSS property "border" or "border-color".

```
.border, #border, table{ border:4px solid
#DBA686 }
```

If only the border color should be changed use the property `border-color`.

```
.border{ border-color:#DBA686 }
```

If you want to add a box shadow in that color use:

Here you see how a box with a 4 pixel #DBA686 colored shadow looks like.

```
.boxshadow{ -moz-box-shadow:4px 4px 4px  
4px #DBA686; -webkit-box-shadow:4px 4px  
4px 4px #DBA686; box-shadow:4px 4px 4px  
4px #DBA686 }
```

Background

The CSS property to change the background color of an element to Decimal 14395014 is called "background". The background property can be set on classes, ids or directly on the HTML element.

```
.background, #background, body{  
background:#DBA686 }
```

If only the background color should be changed can be used:

```
.background{ background-color:#DBA686 }
```

This example shows the color as background, it is applied via the CSS property "background".

To optimize and compress your CSS code, you can use our [online CSS compressor and optimizer](#) based on csstidy. If you want to create a linear or radial gradient as background or border, check our [CSS Gradient Generator](#).

Hey! You found this booklet interesting? Support Converting Colors with the new Membership Option!

The pro membership hides all ads, plus gives you double the colors in the color bucket, and more awesome pro features!

[Learn more, Memberships starting at \\$2.50/m!](#)

**Follow me
on Twitter!**

@ConvertingColor