

# Converting Colors

Decimal(14395814)

Have a look what the booklet for  
Decimal(14395814) contains.

|  |    |
|--|----|
| <b>Decimal(14395814)</b> .....                 | 3  |
| <i><b>Conversions</b></i> .....                | 4  |
| <i><b>Details</b></i> .....                    | 6  |
| <i><b>Harmonies</b></i> .....                  | 11 |
| <i><b>Previews</b></i> .....                   | 23 |
| <i><b>Color Blindness Simulation</b></i> ..... | 26 |
| <i><b>CSS Examples</b></i> .....               | 29 |

# **Color**

**Decimal(14395814)**

# Conversions

## Conversions Part 1

| Format      | Color                     |
|-------------|---------------------------|
| Hex         | DBA9A6                    |
| RGB         | 219, 169, 166             |
| RGB Percent | 86%, 66%, 65%             |
| CMY         | 0.1412, 0.3373, 0.3490    |
| CMYK        | 0.00, 0.23, 0.24, 0.14    |
| HSL         | 3°, 42%, 75%              |
| HSV         | 3°, 24%, 86%              |
| XYZ         | 50.2843, 46.1892, 42.3415 |
| YIQ         | 183.6080, 30.7630, 9.6670 |

# Conversions

## Conversions Part 2

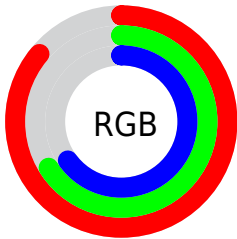
| Format                              | Color                         |
|-------------------------------------|-------------------------------|
| RYB                                 | 219, 169, 166                 |
| Decimal                             | 14395814                      |
| CIELab                              | 73.67, 17.89, 8.62            |
| CIELCh                              | 74, 19.858, 25.722            |
| Yxy                                 | 46.1892, 0.3622,<br>0.3327    |
| Android<br>(android.graphics.Color) | 4292585894<br>(0xFFDBA9A6)    |
| YUV                                 | 183.6080, -8.6807,<br>31.0388 |
| Hunter-Lab                          | 67.9626, 13.1344,<br>10.6355  |

# Details

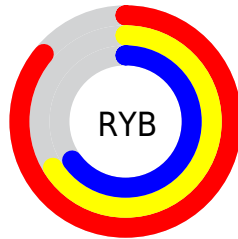
The Decimal color **14395814** is a light color, and the websafe version is hex **CC9999**. A complement of this color would be **10934491**, and the grayscale version is **12105912**.

A 20% lighter version of the original color is **16769245**, and **10712434** is the 20% darker color. If you saturate the color by 10%, you get **14390416**, and if you desaturate by 10%, it is **14401212**.

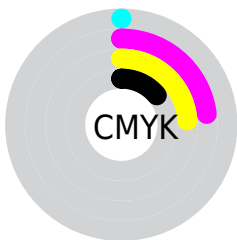
# Distribution



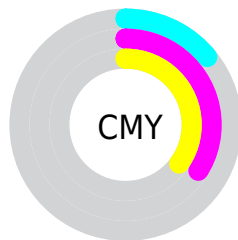
- Red (86%)
- Green (66%)
- Blue (65%)



- Red (86%)
- Yellow (66%)
- Blue (65%)



- Cyan (0%)
- Magenta (23%)
- Yellow (24%)
- Black (14%)



- Cyan (14%)
- Magenta (34%)
- Yellow (35%)

# Brightness & Saturation Gradients

These gradients show how the Decimal color 14395814 changes by changing the brightness by 10 percent. The first figure shows a shift by +10% for each color and the second figure -10%.

Similar to the brightness gradients but the following saturation gradients show a change of the Decimal color 14395814 by changing the saturation by 10% instead.



 14395814

 14395814

16777215

 12553868

 16769245

 10712434

 16776698

 8936538

 7226434

 5582124

 3938328

 2555904

 0

 14395814

 14395814

 14390416

 14401212

 14385274

 14406354

 14379876

 14411752

 14374478

 14417150

 14369337

 14417919

 14363939

 14358541

 14355456

# Harmonies

## Analogous

The Analogous color harmony consists of three colors that are next to each other on the color wheel.



14198968



14395814



13938072

# Triad

The Triadic color harmony groups three colors that are evenly spaced from another and form a triangle on the color wheel.



14395814



10337696



10336217

# Complementary

The Complementary color scheme is a pair of colors which are on the opposite of each other on the color wheel.



14395814



10934491

# Split Complementary

Split-complementary colors differ from the complementary color scheme. The scheme consists of three colors, the original color and two neighbors of the complement color.



9092306



14395814



9224114

# Square

The Square scheme is like the rectangle color scheme, but the four colors are evenly spaced on the color wheel.



14395814



11712916



8699844



11907542

# Rectangle

The Rectangle color scheme consists of four colors that form a rectangle on the color wheel.



14395814



13349266



8699844



9812440

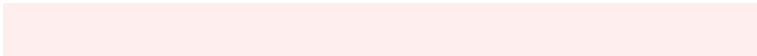


# Sweetspot

The Sweet Spot groups the original color and five complimentary colors.



14395814



16772845



14395096



8418933



0



8421504



# Same Dimension

The Same Dimension uses a secret algorithm to generate beautiful new colors.



14395814



16759221



14402470



7234403



11340288



3015424



# Inverse Universe

The Inverse Universe completely reimagines the original color for something new.



10934491



11926527



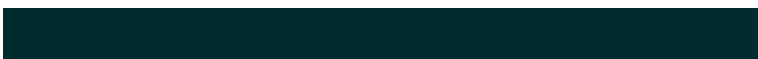
10927835



6516078



42157



11054



# Previews

## White Background



This preview shows how the Decimal color 14395814 looks on a white background.

## Color Contrast Check

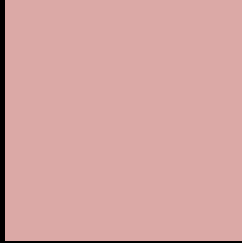
Large Text (above 18pt) WCAG AA × Fail

Any Text WCAG AA × Fail

Large Text (above 18pt) WCAG AAA × Fail

Any Text WCAG AAA × Fail

# Black Background



This preview shows how the Decimal color 14395814 looks on a black background.

## Color Contrast Check

Large Text (above 18pt) WCAG AA ✓ Pass

Any Text WCAG AA ✓ Pass

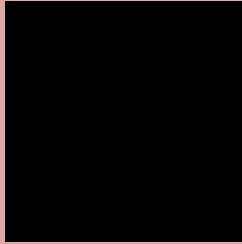
Large Text (above 18pt) WCAG AAA ✓ Pass

Any Text WCAG AAA ✓ Pass

If you want to check with other color combinations, try the [Color Contrast Checker](#).



## Decimal 14395814 Background



This preview shows how black text looks on a background with the Decimal color 14395814.

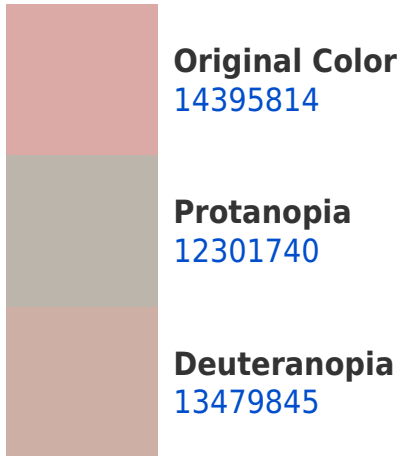



This preview shows how white text looks on a background with the Decimal color 14395814.

# Color Blindness Simulation

Color vision deficiency is a very complex topic, and I could not describe the different causes any better than Wikipedia does, so if you want to learn more, you should check out their [article about color blindness](#).

## Dichromacy





**Tritanopia**  
14526388

# Trichromacy



**Original Color**  
14395814

**Protanomaly**  
13087146

**Deuteranomaly**  
13807013

**Tritanomaly**  
14461103

# Monochromacy



**Original Color**  
14395814

**Achromatopsia**  
12105912

**Achromatomaly**  
12956593

# CSS Examples

## Text

The CSS property to change the color of the text to Decimal 14395814 is called "color". The color property can be set on classes, ids or directly on the HTML element.

This example shows how text in the color #DBA9A6 looks like.

```
.text, #text, p{  
  color:#DBA9A6  
}
```

If you want to add a text shadow in that color use the text-shadow property, you can generate a text shadow directly with our [CSS Text Shadow Generator](#).

Here you see how black text with a 4 pixel #DBA9A6 colored shadow looks like.

```
.shadow{ text-shadow: 4px 4px 2px #DBA9A6
}
```

## Border

The CSS property to change the border of an element to Decimal 14395814 is called "border". The border property can be set on classes, ids or directly on the HTML element.

This example shows the color as border, it can be applied via the CSS property "border" or "border-color".

```
.border, #border, table{ border:4px solid
#DBA9A6 }
```

If only the border color should be changed use the property `border-color`.

```
.border{ border-color:#DBA9A6 }
```

If you want to add a box shadow in that color use:

Here you see how a box with a 4 pixel #DBA9A6 colored shadow looks like.

```
.boxshadow{ -moz-box-shadow:4px 4px 4px  
4px #DBA9A6; -webkit-box-shadow:4px 4px  
4px 4px #DBA9A6; box-shadow:4px 4px 4px  
4px #DBA9A6 }
```

# Background

The CSS property to change the background color of an element to Decimal 14395814 is called "background". The background property can be set on classes, ids or directly on the HTML element.

```
.background, #background, body{  
background:#DBA9A6 }
```

If only the background color should be changed can be used:

```
.background{ background-color:#DBA9A6 }
```

This example shows the color as background, it is applied via the CSS property "background".

To optimize and compress your CSS code, you can use our [online CSS compressor and optimizer](#) based on csstidy. If you want to create a linear or radial gradient as background or border, check our [CSS Gradient Generator](#).



Hey! You found this booklet interesting? Support Converting Colors with the new Membership Option!

The pro membership hides all ads, plus gives you double the colors in the color bucket, and more awesome pro features!

**[Learn more, Memberships starting at \\$2.50/m!](#)**

**Follow me  
on Twitter!**

@ConvertingColor