

# Converting Colors

Decimal(14396318)

Have a look what the booklet for  
Decimal(14396318) contains.

<b>Decimal(14396318)</b> .....	3
<i><b>Conversions</b></i> .....	4
<i><b>Details</b></i> .....	6
<i><b>Harmonies</b></i> .....	11
<i><b>Previews</b></i> .....	23
<i><b>Color Blindness Simulation</b></i> .....	26
<i><b>CSS Examples</b></i> .....	29

# **Color**

**Decimal(14396318)**

# Conversions

## Conversions Part 1

Format	Color
Hex	DBAB9E
RGB	219, 171, 158
RGB Percent	86%, 67%, 62%
CMY	0.1412, 0.3294, 0.3804
CMYK	0.00, 0.22, 0.28, 0.14
HSL	13°, 46%, 74%
HSV	13°, 28%, 86%
XYZ	49.9479, 46.6545, 38.7204
YIQ	183.8700, 32.7810, 6.1330

# Conversions

## Conversions Part 2

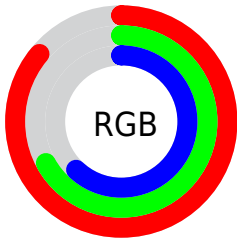
Format	Color
R <sub>Y</sub> B	219, 175, 158
Decimal	14396318
CIE Lab	73.97, 15.69, 13.42
CIE LCh	74, 20.650, 40.540
Yxy	46.6545, 0.3691, 0.3448
Android (android.graphics.Color)	4292586398 (0xFFDBAB9E)
YUV	183.8700, -12.7539, 30.8090
Hunter-Lab	68.3041, 10.9973, 14.2024

# Details

The Decimal color **14396318** is a light color, and the websafe version is hex **CC9999**. A complement of this color would be **10407643**, and the grayscale version is **12105912**.

A 20% lighter version of the original color is **16769749**, and **10712939** is the 20% darker color. If you saturate the color by 10%, you get **14391944**, and if you desaturate by 10%, it is **14400692**.

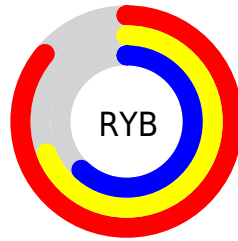
# Distribution



Red (86%)

Green (67%)

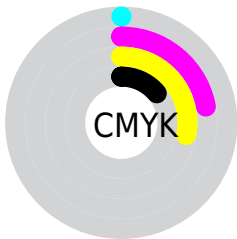
Blue (62%)



Red (86%)

Yellow (69%)

Blue (62%)

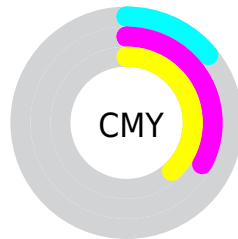


Cyan (0%)

Magenta (22%)

Yellow (28%)

Black (14%)



Cyan (14%)

Magenta (33%)

Yellow (38%)

# Brightness & Saturation Gradients

These gradients show how the Decimal color 14396318 changes by changing the brightness by 10 percent. The first figure shows a shift by +10% for each color and the second figure -10%.

Similar to the brightness gradients but the following saturation gradients show a change of the Decimal color 14396318 by changing the saturation by 10% instead.



 14396318

 14396318

16777215

 12554372

 16769749

 10712939

 16777201

 8937042

 7226939

 5517094

 3938833

 2490880

 0

 14396318

 14396318

 14391944

 14400692

 14387570

 14405066

 14382940

 14409696

 14378566

 14414070

 14374193

 14417919

 14369819

 14365189

 14364416

# Harmonies

## Analogous

The Analogous color harmony consists of three colors that are next to each other on the color wheel.



14526640



14396318



13676691

# Triad

The Triadic color harmony groups three colors that are evenly spaced from another and form a triangle on the color wheel.



14396318



9683113



11122139

# Complementary

The Complementary color scheme is a pair of colors which are on the opposite of each other on the color wheel.



14396318



10407643

# Split Complementary

Split-complementary colors differ from the complementary color scheme. The scheme consists of three colors, the original color and two neighbors of the complement color.



9550809



14396318



8765884

# Square

The Square scheme is like the rectangle color scheme, but the four colors are evenly spaced on the color wheel.



14396318



11058329



8634318



12693459

# Rectangle

The Rectangle color scheme consists of four colors that form a rectangle on the color wheel.



14396318



12891536



8634318



10532827



# Sweetspot

The Sweet Spot groups the original color and five complimentary colors.



14396318



16773099



14393039



8418675



0



8421504



# Same Dimension

The Same Dimension uses a secret algorithm to generate beautiful new colors.



14396318



16760235



14403998



7234915



11347200



3017216

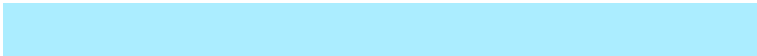


# Inverse Universe

The Inverse Universe completely reimagines the original color for something new.



10407643



11267583



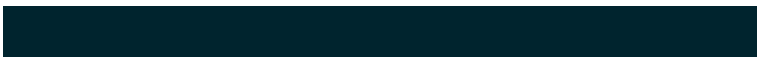
10399963



6515566



34989

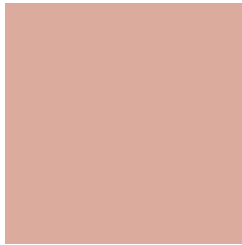


9262



# Previews

## White Background



This preview shows how the Decimal color 14396318 looks on a white background.

## Color Contrast Check

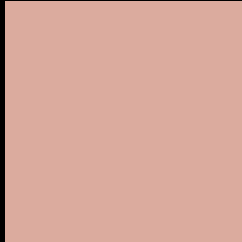
Large Text (above 18pt) WCAG AA × Fail

Any Text WCAG AA × Fail

Large Text (above 18pt) WCAG AAA × Fail

Any Text WCAG AAA × Fail

# Black Background



This preview shows how the Decimal color 14396318 looks on a black background.

## Color Contrast Check

Large Text (above 18pt) WCAG AA ✓ Pass

Any Text WCAG AA ✓ Pass

Large Text (above 18pt) WCAG AAA ✓ Pass

Any Text WCAG AAA ✓ Pass

If you want to check with other color combinations, try the [Color Contrast Checker](#).



## Decimal 14396318 Background



This preview shows how black text looks on a background with the Decimal color 14396318.




This preview shows how white text looks on a background with the Decimal color 14396318.

# Color Blindness Simulation

Color vision deficiency is a very complex topic, and I could not describe the different causes any better than Wikipedia does, so if you want to learn more, you should check out their [article about color blindness](#).

## Dichromacy





**Tritanopia**  
14526645

# Trichromacy



**Original Color**  
14396318

**Protanomaly**  
13218465

**Deuteranomaly**  
14003869

**Tritanomaly**  
14461357

# Monochromacy



**Original Color**  
14396318

**Achromatopsia**  
12105912

**Achromatomaly**  
12956591

# CSS Examples

## Text

The CSS property to change the color of the text to Decimal 14396318 is called "color". The color property can be set on classes, ids or directly on the HTML element.

This example shows how text in the color #DBAB9E looks like.

```
.text, #text, p{  
    color:#DBAB9E  
}
```

If you want to add a text shadow in that color use the text-shadow property, you can generate a text shadow directly with our [CSS Text Shadow Generator](#).

Here you see how black text with a 4 pixel #DBAB9E colored shadow looks like.

```
.shadow{ text-shadow: 4px 4px 2px #DBAB9E
}
```

## Border

The CSS property to change the border of an element to Decimal 14396318 is called "border". The border property can be set on classes, ids or directly on the HTML element.

This example shows the color as border, it can be applied via the CSS property "border" or "border-color".

```
.border, #border, table{ border:4px solid
#DBAB9E }
```

If only the border color should be changed use the property `border-color`.

```
.border{ border-color:#DBAB9E }
```

If you want to add a box shadow in that color use:

Here you see how a box with a 4 pixel #DBAB9E colored shadow looks like.

```
.boxshadow{ -moz-box-shadow:4px 4px 4px  
4px #DBAB9E; -webkit-box-shadow:4px 4px  
4px 4px #DBAB9E; box-shadow:4px 4px 4px  
4px #DBAB9E }
```

# Background

The CSS property to change the background color of an element to Decimal 14396318 is called "background". The background property can be set on classes, ids or directly on the HTML element.

```
.background, #background, body{  
background:#DBAB9E }
```

If only the background color should be changed can be used:

```
.background{ background-color:#DBAB9E }
```

This example shows the color as background, it is applied via the CSS property "background".

To optimize and compress your CSS code, you can use our [online CSS compressor and optimizer](#) based on csstidy. If you want to create a linear or radial gradient as background or border, check our [CSS Gradient Generator](#).



Hey! You found this booklet interesting? Support Converting Colors with the new Membership Option!

The pro membership hides all ads, plus gives you double the colors in the color bucket, and more awesome pro features!

**[Learn more, Memberships starting at \\$2.50/m!](#)**

**Follow me  
on Twitter!**

@ConvertingColor