

Converting Colors

Decimal(14396345)

Have a look what the booklet for
Decimal(14396345) contains.

Decimal(14396345)	3
<i>Conversions</i>	4
<i>Details</i>	6
<i>Harmonies</i>	11
<i>Previews</i>	23
<i>Color Blindness Simulation</i>	26
<i>CSS Examples</i>	29

Color

Decimal(14396345)

Conversions

Conversions Part 1

Format	Color
Hex	DBABB9
RGB	219, 171, 185
RGB Percent	86%, 67%, 73%
CMY	0.1412, 0.3294, 0.2745
CMYK	0.00, 0.22, 0.16, 0.14
HSL	342°, 40%, 76%
HSV	342°, 22%, 86%
XYZ	52.5333, 47.6887, 52.3350
YIQ	186.9480, 24.1140, 14.5300

Conversions

Conversions Part 2

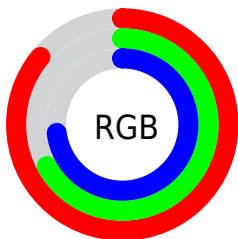
Format	Color
R _Y B	219, 171, 185
Decimal	14396345
CIE Lab	74.63, 19.69, -0.41
CIE LCh	75, 19.698, 358.806
Yxy	47.6887, 0.3444, 0.3126
Android (android.graphics.Color)	4292586425 (0xFFDBABB9)
YUV	186.9480, -0.9604, 28.1096
Hunter-Lab	69.0570, 14.9395, 3.4068

Details

The Decimal color **14396345** is a light color, and the websafe version is hex **CC9999**. A complement of this color would be **11262925**, and the grayscale version is **12303291**.

A 20% lighter version of the original color is **16770033**, and **10712964** is the 20% darker color. If you saturate the color by 10%, you get **14390697**, and if you desaturate by 10%, it is **14401993**.

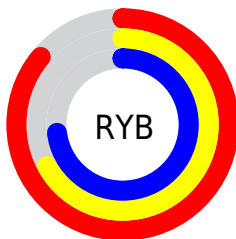
Distribution



Red (86%)

Green (67%)

Blue (73%)



Red (86%)

Yellow (67%)

Blue (73%)

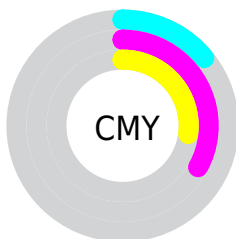


Cyan (0%)

Magenta (22%)

Yellow (16%)

Black (14%)



Cyan (14%)

Magenta (33%)

Yellow (27%)

Brightness & Saturation Gradients

These gradients show how the Decimal color 14396345 changes by changing the brightness by 10 percent. The first figure shows a shift by +10% for each color and the second figure -10%.

Similar to the brightness gradients but the following saturation gradients show a change of the Decimal color 14396345 by changing the saturation by 10% instead.

 14396345

 14396345

16777215

 12554398

 16770033

 10712964

 9002603

 7292499

 5648188

 4069670

 2621713

 0

 14396345

 14396345

14390697

14401993

14385050

14407640

14379402

14413288

14373755

14417911

14368363

14417919

14362716

14357068

14352448

Harmonies

Analogous

The Analogous color harmony consists of three colors that are next to each other on the color wheel.



13610699



14396345



14527655

Triad

The Triadic color harmony groups three colors that are evenly spaced from another and form a triangle on the color wheel.



14396345



11779224



9355222

Complementary

The Complementary color scheme is a pair of colors which are on the opposite of each other on the color wheel.



14396345



11262925

Split Complementary

Split-complementary colors differ from the complementary color scheme. The scheme consists of three colors, the original color and two neighbors of the complement color.



8897224



14396345



10404004

Square

The Square scheme is like the rectangle color scheme, but the four colors are evenly spaced on the color wheel.



14396345



13022868



9290422



10664411

Rectangle

The Rectangle color scheme consists of four colors that form a rectangle on the color wheel.



14396345



14266269



9290422



9093330

Sweetspot

The Sweet Spot groups the original color and five complimentary colors.



14396345



16772594



13478875



8418680



0



8421504

Same Dimension

The Same Dimension uses a secret algorithm to generate beautiful new colors.



14396345



16760272



14398891



7234406



11337779



3014669

Inverse Universe

The Inverse Universe completely reimagines the original color for something new.



14396345



16760272



11260379



7234406



11337779



3014669

Previews

White Background



This preview shows how the Decimal color 14396345 looks on a white background.

Color Contrast Check

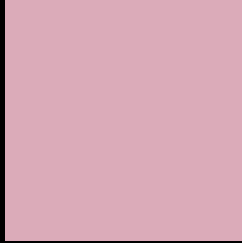
Large Text (above 18pt) WCAG AA × Fail

Any Text WCAG AA × Fail

Large Text (above 18pt) WCAG AAA × Fail

Any Text WCAG AAA × Fail

Black Background



This preview shows how the Decimal color 14396345 looks on a black background.

Color Contrast Check

Large Text (above 18pt) WCAG AA ✓ Pass

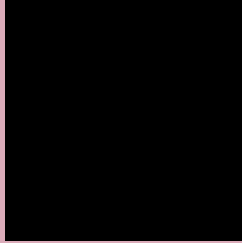
Any Text WCAG AA ✓ Pass

Large Text (above 18pt) WCAG AAA ✓ Pass

Any Text WCAG AAA ✓ Pass

If you want to check with other color combinations, try the [Color Contrast Checker](#).

Decimal 14396345 Background



This preview shows how black text looks on a background with the Decimal color 14396345.



This preview shows how white text looks on a background with the Decimal color 14396345.

Color Blindness Simulation

Color vision deficiency is a very complex topic, and I could not describe the different causes any better than Wikipedia does, so if you want to learn more, you should check out their [article about color blindness](#).


Dichromacy



Original Color
14396345

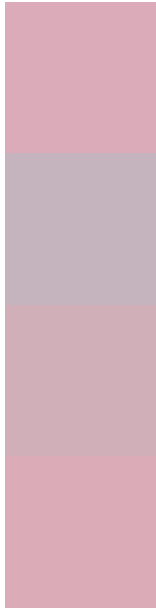
Protanopia
12171200

Deuteranopia
13284024



Tritanopia
14396344

Trichromacy



Original Color
14396345

Protanomaly
12956605

Deuteranomaly
13676472

Tritanomaly
14396344

Monochromacy



Original Color
14396345

Achromatopsia
12303291

Achromatomaly
13088186

CSS Examples

Text

The CSS property to change the color of the text to Decimal 14396345 is called "color". The color property can be set on classes, ids or directly on the HTML element.

This example shows how text in the color #DBABB9 looks like.

```
.text, #text, p{  
    color:#DBABB9  
}
```

If you want to add a text shadow in that color use the text-shadow property, you can generate a text shadow directly with our [CSS Text Shadow Generator](#).

Here you see how black text with a 4 pixel #DBABB9 colored shadow looks like.

```
.shadow{ text-shadow: 4px 4px 2px #DBABB9
}
```

Border

The CSS property to change the border of an element to Decimal 14396345 is called "border". The border property can be set on classes, ids or directly on the HTML element.

This example shows the color as border, it can be applied via the CSS property "border" or "border-color".

```
.border, #border, table{ border:4px solid
#DBABB9 }
```

If only the border color should be changed use the property `border-color`.

```
.border{ border-color:#DBABB9 }
```

If you want to add a box shadow in that color use:

Here you see how a box with a 4 pixel #DBABB9 colored shadow looks like.

```
.boxshadow{ -moz-box-shadow:4px 4px 4px  
4px #DBABB9; -webkit-box-shadow:4px 4px  
4px 4px #DBABB9; box-shadow:4px 4px 4px  
4px #DBABB9 }
```

Background

The CSS property to change the background color of an element to Decimal 14396345 is called "background". The background property can be set on classes, ids or directly on the HTML element.

```
.background, #background, body{  
background:#DBABB9 }
```

If only the background color should be changed can be used:

```
.background{ background-color:#DBABB9 }
```

This example shows the color as background, it is applied via the CSS property "background".

To optimize and compress your CSS code, you can use our [online CSS compressor and optimizer](#) based on csstidy. If you want to create a linear or radial gradient as background or border, check our [CSS Gradient Generator](#).

Hey! You found this booklet interesting? Support Converting Colors with the new Membership Option!

The pro membership hides all ads, plus gives you double the colors in the color bucket, and more awesome pro features!

[Learn more, Memberships starting at \\$2.50/m!](#)

**Follow me
on Twitter!**

@ConvertingColor