

Converting Colors

Decimal(14397100)

Have a look what the booklet for
Decimal(14397100) contains.

Decimal(14397100)	3
<i>Conversions</i>	4
<i>Details</i>	6
<i>Harmonies</i>	11
<i>Previews</i>	23
<i>Color Blindness Simulation</i>	26
<i>CSS Examples</i>	29

Color

Decimal(14397100)

Conversions

Conversions Part 1

Format	Color
Hex	DBAEAC
RGB	219, 174, 172
RGB Percent	86%, 68%, 67%
CMY	0.1412, 0.3176, 0.3255
CMYK	0.00, 0.21, 0.21, 0.14
HSL	3°, 39%, 77%
HSV	3°, 21%, 86%
XYZ	51.7959, 48.3107, 45.6247
YIQ	187.2270, 27.4620, 8.9180

Conversions

Conversions Part 2

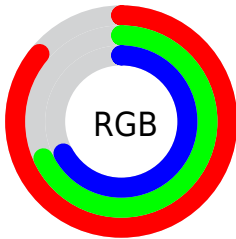
Format	Color
R _Y B	219, 174, 172
Decimal	14397100
CIE Lab	75.02, 16.07, 7.27
CIE LCh	75, 17.641, 24.339
Yxy	48.3107, 0.3554, 0.3315
Android (android.graphics.Color)	4292587180 (0xFFDBAEAC)
YUV	187.2270, -7.5069, 27.8649
Hunter-Lab	69.5059, 11.3830, 9.7353

Details

The Decimal color **14397100** is a light color, and the websafe version is hex **CC9999**. A complement of this color would be **11327963**, and the grayscale version is **12303291**.

A 20% lighter version of the original color is **16770787**, and **10713464** is the 20% darker color. If you saturate the color by 10%, you get **14391702**, and if you desaturate by 10%, it is **14402498**.

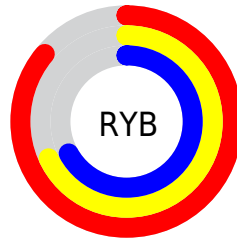
Distribution



Red (86%)

Green (68%)

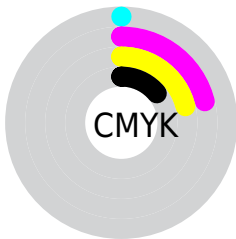
Blue (67%)



Red (86%)

Yellow (68%)

Blue (67%)

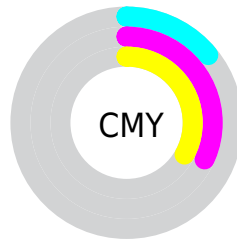


Cyan (0%)

Magenta (21%)

Yellow (21%)

Black (14%)



Cyan (14%)

Magenta (32%)

Yellow (33%)

Brightness & Saturation Gradients

These gradients show how the Decimal color 14397100 changes by changing the brightness by 10 percent. The first figure shows a shift by +10% for each color and the second figure -10%.

Similar to the brightness gradients but the following saturation gradients show a change of the Decimal color 14397100 by changing the saturation by 10% instead.

 14397100

 14397100

16777215

 12555153

 16770787

 10713464

 8937567

 7227719

 5583409

 4004892

 2622721

 0

 14397100

 14397100

 14391702

 14402498

 14386304

 14407896

 14380906

 14413294

 14375508

 14417919

 14370111

 14364713

 14359315

 14354688

Harmonies

Analogous

The Analogous color harmony consists of three colors that are next to each other on the color wheel.



14134972



14397100



14004639

Triad

The Triadic color harmony groups three colors that are evenly spaced from another and form a triangle on the color wheel.



14397100



10862757



10730457

Complementary

The Complementary color scheme is a pair of colors which are on the opposite of each other on the color wheel.



14397100



11327963

Split Complementary

Split-complementary colors differ from the complementary color scheme. The scheme consists of three colors, the original color and two neighbors of the complement color.



9682898



14397100



9814709

Square

The Square scheme is like the rectangle color scheme, but the four colors are evenly spaced on the color wheel.



14397100



12041371



9355973



12105430

Rectangle

The Rectangle color scheme consists of four colors that form a rectangle on the color wheel.



14397100



13546906



9355973



10337751

Sweetspot

The Sweet Spot groups the original color and five complimentary colors.



14397100



16773360



14396633



8419191



0



8421504

Same Dimension

The Same Dimension uses a secret algorithm to generate beautiful new colors.



14397100



16761021



14402988



7234403



11339520



3015168

Inverse Universe

The Inverse Universe completely reimagines the original color for something new.



11327963



12451071



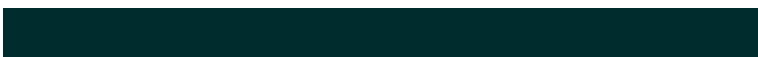
11322075



6516078



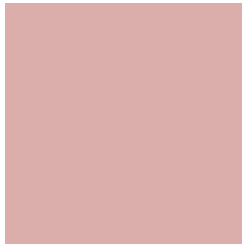
42669



11310

Previews

White Background



This preview shows how the Decimal color 14397100 looks on a white background.

Color Contrast Check

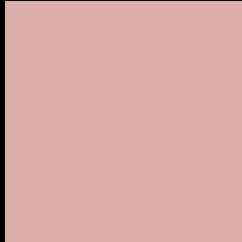
Large Text (above 18pt) WCAG AA × Fail

Any Text WCAG AA × Fail

Large Text (above 18pt) WCAG AAA × Fail

Any Text WCAG AAA × Fail

Black Background



This preview shows how the Decimal color 14397100 looks on a black background.

Color Contrast Check

Large Text (above 18pt) WCAG AA ✓ Pass

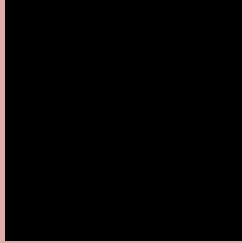
Any Text WCAG AA ✓ Pass

Large Text (above 18pt) WCAG AAA ✓ Pass

Any Text WCAG AAA ✓ Pass

If you want to check with other color combinations, try the [Color Contrast Checker](#).

Decimal 14397100 Background



This preview shows how black text looks on a background with the Decimal color 14397100.



This preview shows how white text looks on a background with the Decimal color 14397100.

Color Blindness Simulation

Color vision deficiency is a very complex topic, and I could not describe the different causes any better than Wikipedia does, so if you want to learn more, you should check out their [article about color blindness](#).


Dichromacy



Original Color
14397100

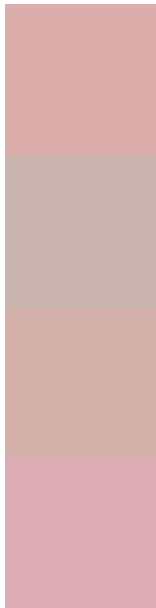
Protanopia
12499122

Deuteranopia
13677227



Tritanopia
14527673

Trichromacy



Original Color
14397100

Protanomaly
13218992

Deuteranomaly
13939115

Tritanomaly
14462388

Monochromacy



Original Color
14397100

Achromatopsia
12303291

Achromatomaly
13088438

CSS Examples

Text

The CSS property to change the color of the text to Decimal 14397100 is called "color". The color property can be set on classes, ids or directly on the HTML element.

This example shows how text in the color #DBAEAC looks like.

```
.text, #text, p{  
  color:#DBAEAC  
}
```

If you want to add a text shadow in that color use the text-shadow property, you can generate a text shadow directly with our [CSS Text Shadow Generator](#).

Here you see how black text with a 4 pixel #DBAEAC colored shadow looks like.

```
.shadow{ text-shadow: 4px 4px 2px #DBAEAC
}
```

Border

The CSS property to change the border of an element to Decimal 14397100 is called "border". The border property can be set on classes, ids or directly on the HTML element.

This example shows the color as border, it can be applied via the CSS property "border" or "border-color".

```
.border, #border, table{ border:4px solid
#DBAEAC }
```

If only the border color should be changed use the property `border-color`.

```
.border{ border-color:#DBAEAC }
```

If you want to add a box shadow in that color use:

Here you see how a box with a 4 pixel #DBAEAC colored shadow looks like.

```
.boxshadow{ -moz-box-shadow:4px 4px 4px  
4px #DBAEAC; -webkit-box-shadow:4px 4px  
4px 4px #DBAEAC; box-shadow:4px 4px 4px  
4px #DBAEAC }
```

Background

The CSS property to change the background color of an element to Decimal 14397100 is called "background". The background property can be set on classes, ids or directly on the HTML element.

```
.background, #background, body{  
background:#DBAEAC }
```

If only the background color should be changed can be used:

```
.background{ background-color:#DBAEAC }
```

This example shows the color as background, it is applied via the CSS property "background".

To optimize and compress your CSS code, you can use our [online CSS compressor and optimizer](#) based on csstidy. If you want to create a linear or radial gradient as background or border, check our [CSS Gradient Generator](#).

Hey! You found this booklet interesting? Support Converting Colors with the new Membership Option!

The pro membership hides all ads, plus gives you double the colors in the color bucket, and more awesome pro features!

[Learn more, Memberships starting at \\$2.50/m!](#)

**Follow me
on Twitter!**

@ConvertingColor