

# Converting Colors

Decimal(14397113)

Have a look what the booklet for  
Decimal(14397113) contains.

<b>Decimal(14397113)</b> .....	3
<i><b>Conversions</b></i> .....	4
<i><b>Details</b></i> .....	6
<i><b>Harmonies</b></i> .....	11
<i><b>Previews</b></i> .....	23
<i><b>Color Blindness Simulation</b></i> .....	26
<i><b>CSS Examples</b></i> .....	29

# **Color**

**Decimal(14397113)**

# Conversions

## Conversions Part 1

Format	Color
Hex	DBAEB9
RGB	219, 174, 185
RGB Percent	86%, 68%, 73%
CMY	0.1412, 0.3176, 0.2745
CMYK	0.00, 0.21, 0.16, 0.14
HSL	345°, 38%, 77%
HSV	345°, 21%, 86%
XYZ	53.1064, 48.8350, 52.5260
YIQ	188.7090, 23.2890, 12.9610

# Conversions

## Conversions Part 2

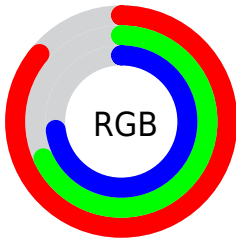
Format	Color
R <sub>Y</sub> B	219, 174, 185
Decimal	14397113
CIE Lab	75.35, 18.08, 0.64
CIE LCh	75, 18.087, 2.032
Yxy	48.8350, 0.3438, 0.3162
Android (android.graphics.Color)	4292587193 (0xFFDBAEB9)
YUV	188.7090, -1.8285, 26.5652
Hunter-Lab	69.8820, 13.3565, 4.3528

# Details

The Decimal color **14397113** is a light color, and the websafe version is hex **CC9999**. A complement of this color would be **11459536**, and the grayscale version is **12434877**.

A 20% lighter version of the original color is **16770801**, and **10713476** is the 20% darker color. If you saturate the color by 10%, you get **14391464**, and if you desaturate by 10%, it is **14402762**.

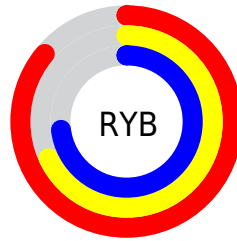
# Distribution



Red (86%)

Green (68%)

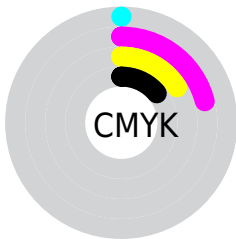
Blue (73%)



Red (86%)

Yellow (68%)

Blue (73%)

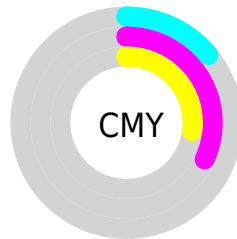


Cyan (0%)

Magenta (21%)

Yellow (16%)

Black (14%)



Cyan (14%)

Magenta (32%)

Yellow (27%)

# Brightness & Saturation Gradients

These gradients show how the Decimal color 14397113 changes by changing the brightness by 10 percent. The first figure shows a shift by +10% for each color and the second figure -10%.

Similar to the brightness gradients but the following saturation gradients show a change of the Decimal color 14397113 by changing the saturation by 10% instead.



 14397113

 14397113

16777215

 12555166

 16770801

 10713476

 9003115

 7293011

 5648700

 4070438

 2622737

 0

 14397113

 14397113

 14391464

 14402762

 14385816

 14408410

 14380167

 14414059

 14374519

 14417915

 14369126

 14417919

 14363478

 14357829

 14352438

# Harmonies

## Analogous

The Analogous color harmony consists of three colors that are next to each other on the color wheel.



13676745



14397113



14462889

# Triad

The Triadic color harmony groups three colors that are evenly spaced from another and form a triangle on the color wheel.



14397113



11779741



9879766

# Complementary

The Complementary color scheme is a pair of colors which are on the opposite of each other on the color wheel.



14397113



11459536

# Split Complementary

Split-complementary colors differ from the complementary color scheme. The scheme consists of three colors, the original color and two neighbors of the complement color.



9290699



14397113



10535593

# Square

The Square scheme is like the rectangle color scheme, but the four colors are evenly spaced on the color wheel.



14397113



13023640



9618362



11058139

# Rectangle

The Rectangle color scheme consists of four colors that form a rectangle on the color wheel.



14397113



14201504



9618362



9617875

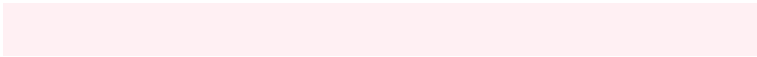


# Sweetspot

The Sweet Spot groups the original color and five complimentary colors.



14397113



16773363



13676251



8419193



0



8421504



# Same Dimension

The Same Dimension uses a secret algorithm to generate beautiful new colors.



14397113



16760783



14399918



7234405



11337770



3014667



# Inverse Universe

The Inverse Universe completely reimagines the original color for something new.



14397113



16760783



11456731



7234405



11337770

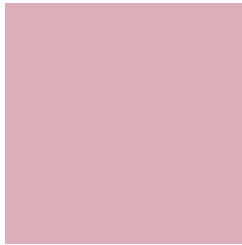


3014667



# Previews

## White Background



This preview shows how the Decimal color 14397113 looks on a white background.

## Color Contrast Check

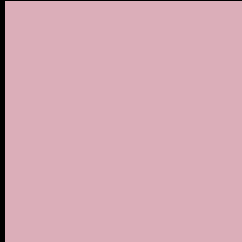
Large Text (above 18pt) WCAG AA × Fail

Any Text WCAG AA × Fail

Large Text (above 18pt) WCAG AAA × Fail

Any Text WCAG AAA × Fail

# Black Background



This preview shows how the Decimal color 14397113 looks on a black background.

## Color Contrast Check

Large Text (above 18pt) WCAG AA ✓ Pass

Any Text WCAG AA ✓ Pass

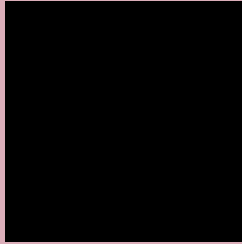
Large Text (above 18pt) WCAG AAA ✓ Pass

Any Text WCAG AAA ✓ Pass

If you want to check with other color combinations, try the [Color Contrast Checker](#).



## Decimal 14397113 Background



This preview shows how black text looks on a background with the Decimal color 14397113.




This preview shows how white text looks on a background with the Decimal color 14397113.

# Color Blindness Simulation

Color vision deficiency is a very complex topic, and I could not describe the different causes any better than Wikipedia does, so if you want to learn more, you should check out their [article about color blindness](#).

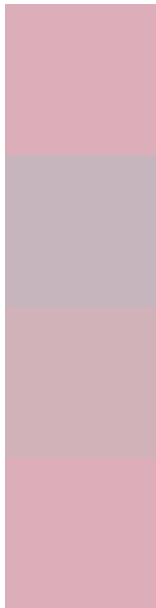
## Dichromacy





**Tritanopia**  
14397115

# Trichromacy



**Original Color**  
14397113

**Protanomaly**  
13088189

**Deuteranomaly**  
13742776

**Tritanomaly**  
14397114

# Monochromacy



**Original Color**  
14397113

**Achromatopsia**  
12434877

**Achromatomaly**  
13154492

# CSS Examples

## Text

The CSS property to change the color of the text to Decimal 14397113 is called "color". The color property can be set on classes, ids or directly on the HTML element.

This example shows how text in the color #DBAEB9 looks like.

```
.text, #text, p{  
    color:#DBAEB9  
}
```

If you want to add a text shadow in that color use the text-shadow property, you can generate a text shadow directly with our [CSS Text Shadow Generator](#).

Here you see how black text with a 4 pixel #DBAEB9 colored shadow looks like.

```
.shadow{ text-shadow: 4px 4px 2px #DBAEB9
}
```

## Border

The CSS property to change the border of an element to Decimal 14397113 is called "border". The border property can be set on classes, ids or directly on the HTML element.

This example shows the color as border, it can be applied via the CSS property "border" or "border-color".

```
.border, #border, table{ border:4px solid
#DBAEB9 }
```

If only the border color should be changed use the property `border-color`.

```
.border{ border-color:#DBAEB9 }
```

If you want to add a box shadow in that color use:

Here you see how a box with a 4 pixel #DBAEB9 colored shadow looks like.

```
.boxshadow{ -moz-box-shadow:4px 4px 4px  
4px #DBAEB9; -webkit-box-shadow:4px 4px  
4px 4px #DBAEB9; box-shadow:4px 4px 4px  
4px #DBAEB9 }
```

# Background

The CSS property to change the background color of an element to Decimal 14397113 is called "background". The background property can be set on classes, ids or directly on the HTML element.

```
.background, #background, body{  
background:#DBAEB9 }
```

If only the background color should be changed can be used:

```
.background{ background-color:#DBAEB9 }
```

This example shows the color as background, it is applied via the CSS property "background".

To optimize and compress your CSS code, you can use our [online CSS compressor and optimizer](#) based on csstidy. If you want to create a linear or radial gradient as background or border, check our [CSS Gradient Generator](#).



Hey! You found this booklet interesting? Support Converting Colors with the new Membership Option!

The pro membership hides all ads, plus gives you double the colors in the color bucket, and more awesome pro features!

**[Learn more, Memberships starting at \\$2.50/m!](#)**

**Follow me  
on Twitter!**

@ConvertingColor