

Converting Colors

Decimal(14397368)

Have a look what the booklet for
Decimal(14397368) contains.

Decimal(14397368)	3
<i>Conversions</i>	4
<i>Details</i>	6
<i>Harmonies</i>	11
<i>Previews</i>	23
<i>Color Blindness Simulation</i>	26
<i>CSS Examples</i>	29

Color

Decimal(14397368)

Conversions

Conversions Part 1

Format	Color
Hex	DBAFB8
RGB	219, 175, 184
RGB Percent	86%, 69%, 72%
CMY	0.1412, 0.3137, 0.2784
CMYK	0.00, 0.20, 0.16, 0.14
HSL	348°, 38%, 77%
HSV	348°, 20%, 86%
XYZ	53.1951, 49.1807, 52.0365
YIQ	189.1820, 23.3350, 12.1270

Conversions

Conversions Part 2

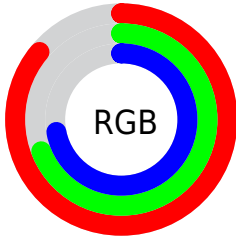
Format	Color
R _Y B	219, 175, 184
Decimal	14397368
CIE Lab	75.56, 17.38, 1.50
CIE LCh	76, 17.442, 4.937
Yxy	49.1807, 0.3445, 0.3185
Android (android.graphics.Color)	4292587448 (0xFFDBAFB8)
YUV	189.1820, -2.5547, 26.1504
Hunter-Lab	70.1290, 12.6724, 5.0964

Details

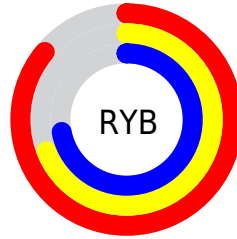
The Decimal color **14397368** is a light color, and the websafe version is hex **CC9999**. A complement of this color would be **11525074**, and the grayscale version is **12434877**.

A 20% lighter version of the original color is **16771056**, and **10713731** is the 20% darker color. If you saturate the color by 10%, you get **14391719**, and if you desaturate by 10%, it is **14403017**.

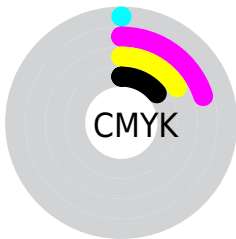
Distribution



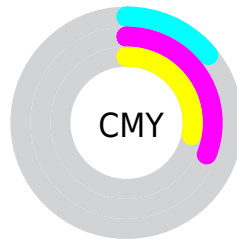
- Red (86%)
- Green (69%)
- Blue (72%)



- Red (86%)
- Yellow (69%)
- Blue (72%)



- Cyan (0%)
- Magenta (20%)
- Yellow (16%)
- Black (14%)



- Cyan (14%)
- Magenta (31%)
- Yellow (28%)

Brightness & Saturation Gradients

These gradients show how the Decimal color 14397368 changes by changing the brightness by 10 percent. The first figure shows a shift by +10% for each color and the second figure -10%.

Similar to the brightness gradients but the following saturation gradients show a change of the Decimal color 14397368 by changing the saturation by 10% instead.

 14397368

 14397368

16777215

 12555421

 16771056

 10713731

 9003370

 7293266

 5648955

 4070693

 2622992

 0

 14397368

 14397368

 14391719

 14403017

 14386069

 14408667

 14380420

 14414316

 14374770

 14417918

 14369377

 14417919

 14363727

 14358078

 14352429

Harmonies

Analogous

The Analogous color harmony consists of three colors that are next to each other on the color wheel.



13808072



14397368



14397608

Triad

The Triadic color harmony groups three colors that are evenly spaced from another and form a triangle on the color wheel.



14397368



11714464



10076375

Complementary

The Complementary color scheme is a pair of colors which are on the opposite of each other on the color wheel.



14397368



11525074

Split Complementary

Split-complementary colors differ from the complementary color scheme. The scheme consists of three colors, the original color and two neighbors of the complement color.



9487308



14397368



10535596

Square

The Square scheme is like the rectangle color scheme, but the four colors are evenly spaced on the color wheel.



14397368



12892826



9684156



11320282

Rectangle

The Rectangle color scheme consists of four colors that form a rectangle on the color wheel.



14397368



14136224



9684156



9814484

Sweetspot

The Sweet Spot groups the original color and five complimentary colors.



14397368



16773363



13742043



8419192



0



8421504

Same Dimension

The Same Dimension uses a secret algorithm to generate beautiful new colors.



14397368



16761550



14400431



7234405



11337763



3014665

Inverse Universe

The Inverse Universe completely reimagines the original color for something new.



14397368



16761550



11522011



7234405



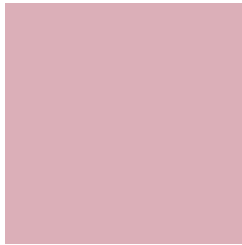
11337763



3014665

Previews

White Background



This preview shows how the Decimal color 14397368 looks on a white background.

Color Contrast Check

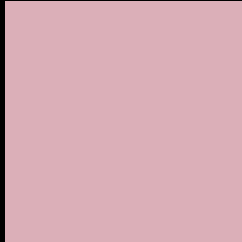
Large Text (above 18pt) WCAG AA × Fail

Any Text WCAG AA × Fail

Large Text (above 18pt) WCAG AAA × Fail

Any Text WCAG AAA × Fail

Black Background



This preview shows how the Decimal color 14397368 looks on a black background.

Color Contrast Check

Large Text (above 18pt) WCAG AA ✓ Pass

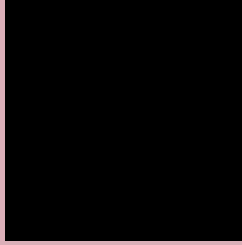
Any Text WCAG AA ✓ Pass

Large Text (above 18pt) WCAG AAA ✓ Pass

Any Text WCAG AAA ✓ Pass

If you want to check with other color combinations, try the [Color Contrast Checker](#).

Decimal 14397368 Background



This preview shows how black text looks on a background with the Decimal color 14397368.



This preview shows how white text looks on a background with the Decimal color 14397368.

Color Blindness Simulation

Color vision deficiency is a very complex topic, and I could not describe the different causes any better than Wikipedia does, so if you want to learn more, you should check out their [article about color blindness](#).


Dichromacy



Original Color
14397368

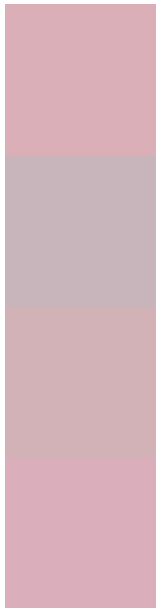
Protanopia
12433854

Deuteranopia
13546679



Tritanopia
14397116

Trichromacy



Original Color
14397368

Protanomaly
13153724

Deuteranomaly
13873847

Tritanomaly
14397115

Monochromacy



Original Color
14397368

Achromatopsia
12434877

Achromatomaly
13154491

CSS Examples

Text

The CSS property to change the color of the text to Decimal 14397368 is called "color". The color property can be set on classes, ids or directly on the HTML element.

This example shows how text in the color #DBAFB8 looks like.

```
.text, #text, p{  
    color:#DBAFB8  
}
```

If you want to add a text shadow in that color use the text-shadow property, you can generate a text shadow directly with our [CSS Text Shadow Generator](#).

Here you see how black text with a 4 pixel #DBAFB8 colored shadow looks like.

```
.shadow{ text-shadow: 4px 4px 2px #DBAFB8  
}
```

Border

The CSS property to change the border of an element to Decimal 14397368 is called "border". The border property can be set on classes, ids or directly on the HTML element.

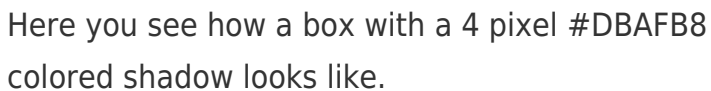
This example shows the color as border, it can be applied via the CSS property "border" or "border-color".

```
.border, #border, table{ border:4px solid  
#DBAFB8 }
```

If only the border color should be changed use the property `border-color`.

```
.border{ border-color:#DBAFB8 }
```

If you want to add a box shadow in that color use:



Here you see how a box with a 4 pixel #DBAFB8 colored shadow looks like.

```
.boxshadow{ -moz-box-shadow:4px 4px 4px  
4px #DBAFB8; -webkit-box-shadow:4px 4px  
4px 4px #DBAFB8; box-shadow:4px 4px 4px  
4px #DBAFB8 }
```

Background

The CSS property to change the background color of an element to Decimal 14397368 is called "background". The background property can be set on classes, ids or directly on the HTML element.

```
.background, #background, body{  
background:#DBAFB8 }
```

If only the background color should be changed can be used:

```
.background{ background-color:#DBAFB8 }
```

This example shows the color as background, it is applied via the CSS property "background".

To optimize and compress your CSS code, you can use our [online CSS compressor and optimizer](#) based on csstidy. If you want to create a linear or radial gradient as background or border, check our [CSS Gradient Generator](#).

Hey! You found this booklet interesting? Support Converting Colors with the new Membership Option!

The pro membership hides all ads, plus gives you double the colors in the color bucket, and more awesome pro features!

[Learn more, Memberships starting at \\$2.50/m!](#)

**Follow me
on Twitter!**

@ConvertingColor