

Converting Colors

Decimal(14398353)

Have a look what the booklet for
Decimal(14398353) contains.

Decimal(14398353)	3
<i>Conversions</i>	4
<i>Details</i>	6
<i>Harmonies</i>	11
<i>Previews</i>	23
<i>Color Blindness Simulation</i>	26
<i>CSS Examples</i>	29

Color

Decimal(14398353)

Conversions

Conversions Part 1

Format	Color
Hex	DBB391
RGB	219, 179, 145
RGB Percent	86%, 70%, 57%
CMY	0.1412, 0.2980, 0.4314
CMYK	0.00, 0.18, 0.34, 0.14
HSL	28°, 51%, 71%
HSV	28°, 34%, 86%
XYZ	50.4444, 49.3446, 33.6538
YIQ	187.0840, 34.7540, -2.0940

Conversions

Conversions Part 2

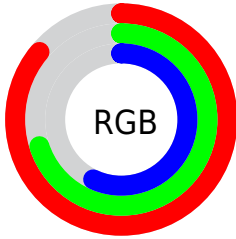
Format	Color
R _Y B	219, 208, 145
Decimal	14398353
CIE Lab	75.67, 9.71, 22.82
CIE LCh	76, 24.799, 66.948
Yxy	49.3446, 0.3780, 0.3698
Android (android.graphics.Color)	4292588433 (0xFFDDBB391)
YUV	187.0840, -20.7474, 27.9903
Hunter-Lab	70.2457, 5.2532, 20.7669

Details

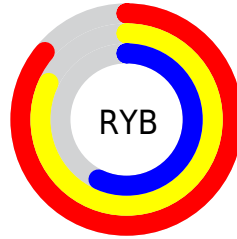
The Decimal color **14398353** is a light color, and the websafe version is hex **FFCC99**. A complement of this color would be **9550299**, and the grayscale version is **12303291**.

A 20% lighter version of the original color is **16772039**, and **10714718** is the 20% darker color. If you saturate the color by 10%, you get **14395259**, and if you desaturate by 10%, it is **14401447**.

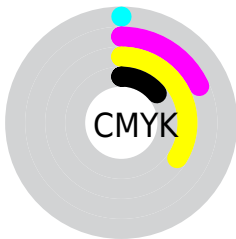
Distribution



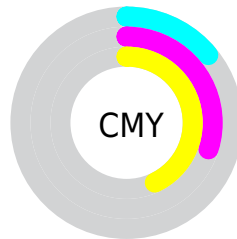
- Red (86%)
- Green (70%)
- Blue (57%)



- Red (86%)
- Yellow (82%)
- Blue (57%)



- Cyan (0%)
- Magenta (18%)
- Yellow (34%)
- Black (14%)



- Cyan (14%)
- Magenta (30%)
- Yellow (43%)

Brightness & Saturation Gradients

These gradients show how the Decimal color 14398353 changes by changing the brightness by 10 percent. The first figure shows a shift by +10% for each color and the second figure -10%.

Similar to the brightness gradients but the following saturation gradients show a change of the Decimal color 14398353 by changing the saturation by 10% instead.

 14398353

 14398353

16777215


 12556407

 16772039

 10714718

 16777187

 8938822

 7163184

 5519130

 3875073

 2362368

 0

 14398353

 14398353

 14395259

 14401447

 14392165

 14404541

 14389071

 14407635

 14386233

 14410473

 14383140

 14413566

 14380046

 14416639

 14378240

 14417919

Harmonies

Analogous

The Analogous color harmony consists of three colors that are next to each other on the color wheel.



15183264



14398353



13024141

Triad

The Triadic color harmony groups three colors that are evenly spaced from another and form a triangle on the color wheel.



14398353



8374463



12956639

Complementary

The Complementary color scheme is a pair of colors which are on the opposite of each other on the color wheel.



14398353



9550299

Split Complementary

Split-complementary colors differ from the complementary color scheme. The scheme consists of three colors, the original color and two neighbors of the complement color.



10927079



14398353



7980757

Square

The Square scheme is like the rectangle color scheme, but the four colors are evenly spaced on the color wheel.



14398353



9684648



9028324



14527693

Rectangle

The Rectangle color scheme consists of four colors that form a rectangle on the color wheel.



14398353



11911057



9028324



12301795

Sweetspot

The Sweet Spot groups the original color and five complimentary colors.



14398353



16773606



14389690



8419184



0



8421504

Same Dimension

The Same Dimension uses a secret algorithm to generate beautiful new colors.



14398353



16762518



14407569



7235683



11358208



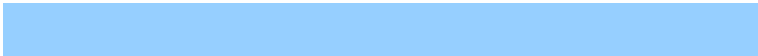
3020032

Inverse Universe

The Inverse Universe completely reimagines the original color for something new.



9550299



9883647



9541083



6515054



24237



6446

Previews

White Background



This preview shows how the Decimal color 14398353 looks on a white background.

Color Contrast Check

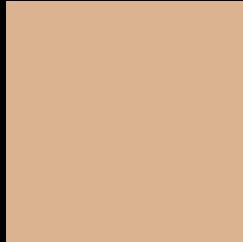
Large Text (above 18pt) WCAG AA × Fail

Any Text WCAG AA × Fail

Large Text (above 18pt) WCAG AAA × Fail

Any Text WCAG AAA × Fail

Black Background



This preview shows how the Decimal color 14398353 looks on a black background.

Color Contrast Check

Large Text (above 18pt) WCAG AA ✓ Pass

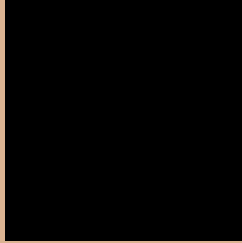
Any Text WCAG AA ✓ Pass

Large Text (above 18pt) WCAG AAA ✓ Pass

Any Text WCAG AAA ✓ Pass

If you want to check with other color combinations, try the [Color Contrast Checker](#).

Decimal 14398353 Background



This preview shows how black text looks on a background with the Decimal color 14398353.




This preview shows how white text looks on a background with the Decimal color 14398353.

Color Blindness Simulation

Color vision deficiency is a very complex topic, and I could not describe the different causes any better than Wikipedia does, so if you want to learn more, you should check out their [article about color blindness](#).

Dichromacy





Tritanopia
14659003

Trichromacy



Original Color
14398353

Protanomaly
13547411

Deuteranomaly
14398353

Tritanomaly
14593964

Monochromacy



Original Color
14398353

Achromatopsia
12303291

Achromatomaly
13088940

CSS Examples

Text

The CSS property to change the color of the text to Decimal 14398353 is called "color". The color property can be set on classes, ids or directly on the HTML element.

This example shows how text in the color #DBB391 looks like.

```
.text, #text, p{  
  color:#DBB391  
}
```

If you want to add a text shadow in that color use the text-shadow property, you can generate a text shadow directly with our [CSS Text Shadow Generator](#).

Here you see how black text with a 4 pixel #DBB391 colored shadow looks like.

```
.shadow{ text-shadow: 4px 4px 2px #DBB391
}
```

Border

The CSS property to change the border of an element to Decimal 14398353 is called "border". The border property can be set on classes, ids or directly on the HTML element.

This example shows the color as border, it can be applied via the CSS property "border" or "border-color".

```
.border, #border, table{ border:4px solid
#DBB391 }
```

If only the border color should be changed use the property `border-color`.

```
.border{ border-color:#DBB391 }
```

If you want to add a box shadow in that color use:

Here you see how a box with a 4 pixel #DBB391 colored shadow looks like.

```
.boxshadow{ -moz-box-shadow:4px 4px 4px  
4px #DBB391; -webkit-box-shadow:4px 4px  
4px 4px #DBB391; box-shadow:4px 4px 4px  
4px #DBB391 }
```

Background

The CSS property to change the background color of an element to Decimal 14398353 is called "background". The background property can be set on classes, ids or directly on the HTML element.

```
.background, #background, body{  
background:#DBB391 }
```

If only the background color should be changed can be used:

```
.background{ background-color:#DBB391 }
```

This example shows the color as background, it is applied via the CSS property "background".

To optimize and compress your CSS code, you can use our [online CSS compressor and optimizer](#) based on csstidy. If you want to create a linear or radial gradient as background or border, check our [CSS Gradient Generator](#).

Hey! You found this booklet interesting? Support Converting Colors with the new Membership Option!

The pro membership hides all ads, plus gives you double the colors in the color bucket, and more awesome pro features!

[Learn more, Memberships starting at \\$2.50/m!](#)

**Follow me
on Twitter!**

@ConvertingColor