

Converting Colors

Decimal(14398374)

Have a look what the booklet for
Decimal(14398374) contains.

Decimal(14398374)	3
<i>Conversions</i>	4
<i>Details</i>	6
<i>Harmonies</i>	11
<i>Previews</i>	23
<i>Color Blindness Simulation</i>	26
<i>CSS Examples</i>	29

Color

Decimal(14398374)

Conversions

Conversions Part 1

Format	Color
Hex	DBB3A6
RGB	219, 179, 166
RGB Percent	86%, 70%, 65%
CMY	0.1412, 0.2980, 0.3490
CMYK	0.00, 0.18, 0.24, 0.14
HSL	15°, 42%, 75%
HSV	15°, 24%, 86%
XYZ	52.2165, 50.0534, 42.9856
YIQ	189.4780, 28.0130, 4.4370

Conversions

Conversions Part 2

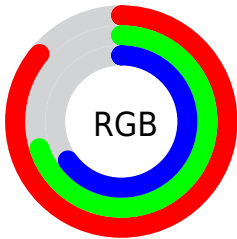
Format	Color
R _Y B	219, 183, 166
Decimal	14398374
CIE Lab	76.10, 12.51, 12.08
CIE LCh	76, 17.392, 43.986
Yxy	50.0534, 0.3595, 0.3446
Android (android.graphics.Color)	4292588454 (0xFFDDBB3A6)
YUV	189.4780, -11.5747, 25.8908
Hunter-Lab	70.7485, 7.9335, 13.5003

Details

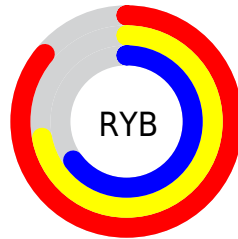
The Decimal color **14398374** is a light color, and the websafe version is hex **CC9999**. A complement of this color would be **10931931**, and the grayscale version is **12500670**.

A 20% lighter version of the original color is **16772061**, and **10714738** is the 20% darker color. If you saturate the color by 10%, you get **14394000**, and if you desaturate by 10%, it is **14402748**.

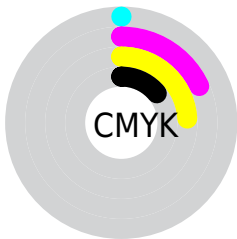
Distribution



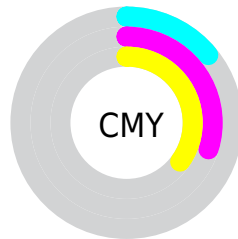
- Red (86%)
- Green (70%)
- Blue (65%)



- Red (86%)
- Yellow (72%)
- Blue (65%)



- Cyan (0%)
- Magenta (18%)
- Yellow (24%)
- Black (14%)



- Cyan (14%)
- Magenta (30%)
- Yellow (35%)

Brightness & Saturation Gradients

These gradients show how the Decimal color 14398374 changes by changing the brightness by 10 percent. The first figure shows a shift by +10% for each color and the second figure -10%.

Similar to the brightness gradients but the following saturation gradients show a change of the Decimal color 14398374 by changing the saturation by 10% instead.

 14398374

 14398374

16777215

 12556428

 16772061

 10714738

 16777210

 8938842

 7228738

 5584428

 4006167

 2558720

 0

 14398374

 14398374

■ 14394000

■ 14402748

■ 14389882

■ 14406866

■ 14385508

■ 14411240

■ 14381390

■ 14415358

■ 14377017

■ 14417919

■ 14372899

■ 14368525

■ 14366208

Harmonies

Analogous

The Analogous color harmony consists of three colors that are next to each other on the color wheel.



14528949



14398374



13744285

Triad

The Triadic color harmony groups three colors that are evenly spaced from another and form a triangle on the color wheel.



14398374



10339506



11844315

Complementary

The Complementary color scheme is a pair of colors which are on the opposite of each other on the color wheel.



14398374



10931931

Split Complementary

Split-complementary colors differ from the complementary color scheme. The scheme consists of three colors, the original color and two neighbors of the complement color.



10535130



14398374



9684419

Square

The Square scheme is like the rectangle color scheme, but the four colors are evenly spaced on the color wheel.



14398374



11453092



9683921



13153747

Rectangle

The Rectangle color scheme consists of four colors that form a rectangle on the color wheel.



14398374



13024156



9683921



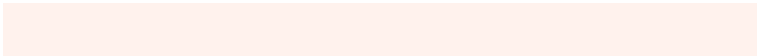
11386075

Sweetspot

The Sweet Spot groups the original color and five complimentary colors.



14398374



16773869



14395087



8419445



0



8421504

Same Dimension

The Same Dimension uses a secret algorithm to generate beautiful new colors.



14398374



16762805



14405030



7234915



11348736



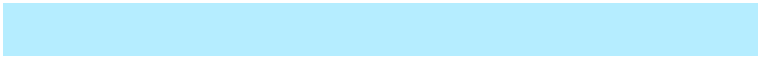
3017472

Inverse Universe

The Inverse Universe completely reimagines the original color for something new.



10931931



11922943



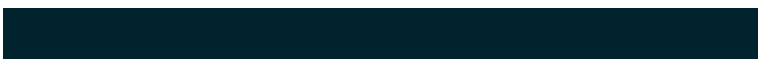
10925275



6515566



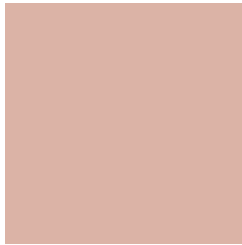
33709



9006

Previews

White Background



This preview shows how the Decimal color 14398374 looks on a white background.

Color Contrast Check

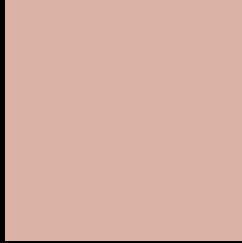
Large Text (above 18pt) WCAG AA × Fail

Any Text WCAG AA × Fail

Large Text (above 18pt) WCAG AAA × Fail

Any Text WCAG AAA × Fail

Black Background



This preview shows how the Decimal color 14398374 looks on a black background.

Color Contrast Check

Large Text (above 18pt) WCAG AA ✓ Pass

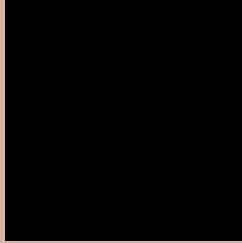
Any Text WCAG AA ✓ Pass

Large Text (above 18pt) WCAG AAA ✓ Pass

Any Text WCAG AAA ✓ Pass

If you want to check with other color combinations, try the [Color Contrast Checker](#).

Decimal 14398374 Background



This preview shows how black text looks on a background with the Decimal color 14398374.




This preview shows how white text looks on a background with the Decimal color 14398374.

Color Blindness Simulation

Color vision deficiency is a very complex topic, and I could not describe the different causes any better than Wikipedia does, so if you want to learn more, you should check out their [article about color blindness](#).

Dichromacy





Tritanopia
14594237

Trichromacy



Original Color
14398374

Protanomaly
13416617

Deuteranomaly
14202022

Tritanomaly
14528949

Monochromacy



Original Color
14398374

Achromatopsia
12434877

Achromatomaly
13154741

CSS Examples

Text

The CSS property to change the color of the text to Decimal 14398374 is called "color". The color property can be set on classes, ids or directly on the HTML element.

This example shows how text in the color #DBB3A6 looks like.

```
.text, #text, p{  
  color:#DBB3A6  
}
```

If you want to add a text shadow in that color use the text-shadow property, you can generate a text shadow directly with our [CSS Text Shadow Generator](#).

Here you see how black text with a 4 pixel #DBB3A6 colored shadow looks like.

```
.shadow{ text-shadow: 4px 4px 2px #DBB3A6
}
```

Border

The CSS property to change the border of an element to Decimal 14398374 is called "border". The border property can be set on classes, ids or directly on the HTML element.

This example shows the color as border, it can be applied via the CSS property "border" or "border-color".

```
.border, #border, table{ border:4px solid
#DBB3A6 }
```

If only the border color should be changed use the property `border-color`.

```
.border{ border-color:#DBB3A6 }
```

If you want to add a box shadow in that color use:

Here you see how a box with a 4 pixel #DBB3A6 colored shadow looks like.

```
.boxshadow{ -moz-box-shadow:4px 4px 4px  
4px #DBB3A6; -webkit-box-shadow:4px 4px  
4px 4px #DBB3A6; box-shadow:4px 4px 4px  
4px #DBB3A6 }
```

Background

The CSS property to change the background color of an element to Decimal 14398374 is called "background". The background property can be set on classes, ids or directly on the HTML element.

```
.background, #background, body{  
background:#DBB3A6 }
```

If only the background color should be changed can be used:

```
.background{ background-color:#DBB3A6 }
```

This example shows the color as background, it is applied via the CSS property "background".

To optimize and compress your CSS code, you can use our [online CSS compressor and optimizer](#) based on csstidy. If you want to create a linear or radial gradient as background or border, check our [CSS Gradient Generator](#).

Hey! You found this booklet interesting? Support Converting Colors with the new Membership Option!

The pro membership hides all ads, plus gives you double the colors in the color bucket, and more awesome pro features!

[Learn more, Memberships starting at \\$2.50/m!](#)

**Follow me
on Twitter!**

@ConvertingColor