

Converting Colors

Decimal(14398621)

Have a look what the booklet for
Decimal(14398621) contains.

Decimal(14398621)	3
<i>Conversions</i>	4
<i>Details</i>	6
<i>Harmonies</i>	11
<i>Previews</i>	23
<i>Color Blindness Simulation</i>	26
<i>CSS Examples</i>	29

Color

Decimal(14398621)

Conversions

Conversions Part 1

Format	Color
Hex	DBB49D
RGB	219, 180, 157
RGB Percent	86%, 71%, 62%
CMY	0.1412, 0.2941, 0.3843
CMYK	0.00, 0.18, 0.28, 0.14
HSL	22°, 46%, 74%
HSV	22°, 28%, 86%
XYZ	51.6205, 50.1369, 38.8550
YIQ	189.0390, 30.6270, 1.1150

Conversions

Conversions Part 2

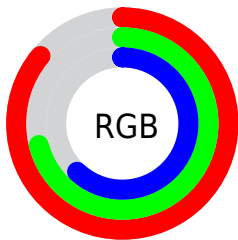
Format	Color
R _Y B	219, 194, 157
Decimal	14398621
CIE Lab	76.15, 10.73, 17.03
CIE LCh	76, 20.124, 57.781
Yxy	50.1369, 0.3671, 0.3566
Android (android.graphics.Color)	4292588701 (0xFFDDBB49D)
YUV	189.0390, -15.7952, 26.2758
Hunter-Lab	70.8074, 6.2182, 17.0303

Details

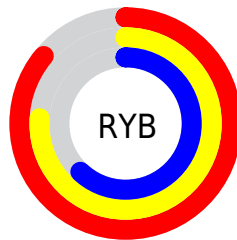
The Decimal color **14398621** is a light color, and the websafe version is hex **CC9999**. A complement of this color would be **10339547**, and the grayscale version is **12434877**.

A 20% lighter version of the original color is **16772308**, and **10714986** is the 20% darker color. If you saturate the color by 10%, you get **14395015**, and if you desaturate by 10%, it is **14402227**.

Distribution



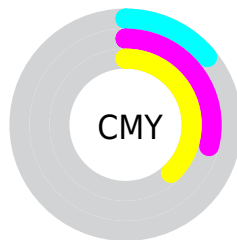
- Red (86%)
- Green (71%)
- Blue (62%)



- Red (86%)
- Yellow (76%)
- Blue (62%)



- Cyan (0%)
- Magenta (18%)
- Yellow (28%)
- Black (14%)



- Cyan (14%)
- Magenta (29%)
- Yellow (38%)

Brightness & Saturation Gradients

These gradients show how the Decimal color 14398621 changes by changing the brightness by 10 percent. The first figure shows a shift by +10% for each color and the second figure -10%.

Similar to the brightness gradients but the following saturation gradients show a change of the Decimal color 14398621 by changing the saturation by 10% instead.



14398621



14398621

16777215



12556675



16772308



10714986



16777200



8939089



7228986



5584676



3940880



2493696



0



14398621



14398621

■ 14395015

■ 14402227

■ 14391409

■ 14405833

■ 14388059

■ 14409183

■ 14384453

■ 14412789

■ 14380848

■ 14416383

■ 14377242

■ 14417919

■ 14373892

■ 14373120

Harmonies

Analogous

The Analogous color harmony consists of three colors that are next to each other on the color wheel.



14856363



14398621



13417111

Triad

The Triadic color harmony groups three colors that are evenly spaced from another and form a triangle on the color wheel.



14398621



9553594



12433629

Complementary

The Complementary color scheme is a pair of colors which are on the opposite of each other on the color wheel.



14398621



10339547

Split Complementary

Split-complementary colors differ from the complementary color scheme. The scheme consists of three colors, the original color and two neighbors of the complement color.



10862304



14398621



9029324

Square

The Square scheme is like the rectangle color scheme, but the four colors are evenly spaced on the color wheel.



14398621



10667175



9552859



13873872

Rectangle

The Rectangle color scheme consists of four colors that form a rectangle on the color wheel.



14398621



12500632



9552859



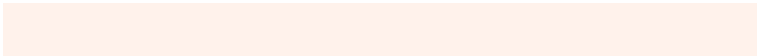
11909855

Sweetspot

The Sweet Spot groups the original color and five complimentary colors.



14398621



16773867



14392772



8419187



0



8421504

Same Dimension

The Same Dimension uses a secret algorithm to generate beautiful new colors.



14398621



16763048



14406557



7235427



11354112



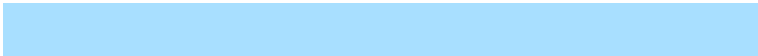
3019008

Inverse Universe

The Inverse Universe completely reimagines the original color for something new.



10339547



11067391



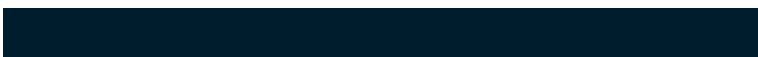
10331611



6515310



28077



7470

Previews

White Background



This preview shows how the Decimal color 14398621 looks on a white background.

Color Contrast Check

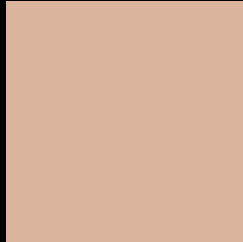
Large Text (above 18pt) WCAG AA × Fail

Any Text WCAG AA × Fail

Large Text (above 18pt) WCAG AAA × Fail

Any Text WCAG AAA × Fail

Black Background



This preview shows how the Decimal color 14398621 looks on a black background.

Color Contrast Check

Large Text (above 18pt) WCAG AA ✓ Pass

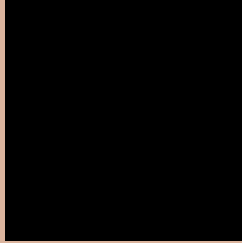
Any Text WCAG AA ✓ Pass

Large Text (above 18pt) WCAG AAA ✓ Pass

Any Text WCAG AAA ✓ Pass

If you want to check with other color combinations, try the [Color Contrast Checker](#).

Decimal 14398621 Background



This preview shows how black text looks on a background with the Decimal color 14398621.




This preview shows how white text looks on a background with the Decimal color 14398621.

Color Blindness Simulation

Color vision deficiency is a very complex topic, and I could not describe the different causes any better than Wikipedia does, so if you want to learn more, you should check out their [article about color blindness](#).

Dichromacy





Tritanopia
14659517

Trichromacy



Original Color
14398621

Protanomaly
13547936

Deuteranomaly
14333341

Tritanomaly
14594481

Monochromacy



Original Color
14398621

Achromatopsia
12434877

Achromatomaly
13154993

CSS Examples

Text

The CSS property to change the color of the text to Decimal 14398621 is called "color". The color property can be set on classes, ids or directly on the HTML element.

This example shows how text in the color #DBB49D looks like.

```
.text, #text, p{  
    color:#DBB49D  
}
```

If you want to add a text shadow in that color use the text-shadow property, you can generate a text shadow directly with our [CSS Text Shadow Generator](#).

Here you see how black text with a 4 pixel #DBB49D colored shadow looks like.

```
.shadow{ text-shadow: 4px 4px 2px #DBB49D
}
```

Border

The CSS property to change the border of an element to Decimal 14398621 is called "border". The border property can be set on classes, ids or directly on the HTML element.

This example shows the color as border, it can be applied via the CSS property "border" or "border-color".

```
.border, #border, table{ border:4px solid
#DBB49D }
```

If only the border color should be changed use the property `border-color`.

```
.border{ border-color:#DBB49D }
```

If you want to add a box shadow in that color use:

Here you see how a box with a 4 pixel #DBB49D colored shadow looks like.

```
.boxshadow{ -moz-box-shadow:4px 4px 4px  
4px #DBB49D; -webkit-box-shadow:4px 4px  
4px 4px #DBB49D; box-shadow:4px 4px 4px  
4px #DBB49D }
```

Background

The CSS property to change the background color of an element to Decimal 14398621 is called "background". The background property can be set on classes, ids or directly on the HTML element.

```
.background, #background, body{  
background:#DBB49D }
```

If only the background color should be changed can be used:

```
.background{ background-color:#DBB49D }
```

This example shows the color as background, it is applied via the CSS property "background".

To optimize and compress your CSS code, you can use our [online CSS compressor and optimizer](#) based on csstidy. If you want to create a linear or radial gradient as background or border, check our [CSS Gradient Generator](#).

Hey! You found this booklet interesting? Support Converting Colors with the new Membership Option!

The pro membership hides all ads, plus gives you double the colors in the color bucket, and more awesome pro features!

[Learn more, Memberships starting at \\$2.50/m!](#)

**Follow me
on Twitter!**

@ConvertingColor