

Converting Colors

Decimal(14398872)

Have a look what the booklet for
Decimal(14398872) contains.

Decimal(14398872)	3
<i>Conversions</i>	4
<i>Details</i>	6
<i>Harmonies</i>	11
<i>Previews</i>	23
<i>Color Blindness Simulation</i>	26
<i>CSS Examples</i>	29

Color

Decimal(14398872)

Conversions

Conversions Part 1

Format	Color
Hex	DBB598
RGB	219, 181, 152
RGB Percent	86%, 71%, 60%
CMY	0.1412, 0.2902, 0.4039
CMYK	0.00, 0.17, 0.31, 0.14
HSL	26°, 48%, 73%
HSV	26°, 31%, 86%
XYZ	51.4048, 50.3748, 36.7198
YIQ	189.0560, 31.9570, -0.9630

Conversions

Conversions Part 2

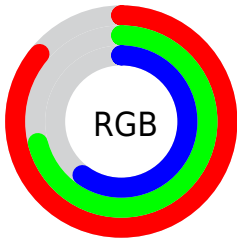
Format	Color
R _Y B	219, 203, 152
Decimal	14398872
CIE Lab	76.30, 9.53, 19.92
CIE LCh	76, 22.087, 64.430
Yxy	50.3748, 0.3712, 0.3637
Android (android.graphics.Color)	4292588952 (0xFFDDBB598)
YUV	189.0560, -18.2686, 26.2609
Hunter-Lab	70.9752, 5.0745, 19.0084

Details

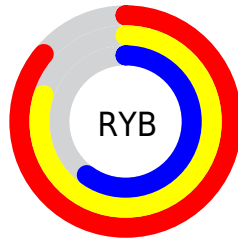
The Decimal color **14398872** is a light color, and the websafe version is hex **FFCC99**. A complement of this color would be **10010331**, and the grayscale version is **12434877**.

A 20% lighter version of the original color is **16772558**, and **10715237** is the 20% darker color. If you saturate the color by 10%, you get **14395778**, and if you desaturate by 10%, it is **14401966**.

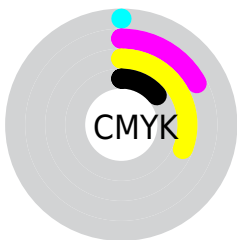
Distribution



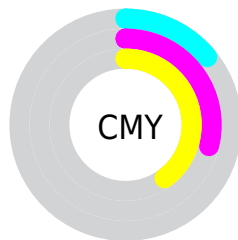
- Red (86%)
- Green (71%)
- Blue (60%)



- Red (86%)
- Yellow (80%)
- Blue (60%)



- Cyan (0%)
- Magenta (17%)
- Yellow (31%)
- Black (14%)



- Cyan (14%)
- Magenta (29%)
- Yellow (40%)

Brightness & Saturation Gradients

These gradients show how the Decimal color 14398872 changes by changing the brightness by 10 percent. The first figure shows a shift by +10% for each color and the second figure -10%.

Similar to the brightness gradients but the following saturation gradients show a change of the Decimal color 14398872 by changing the saturation by 10% instead.

 14398872

 14398872

16777215

 12556926

 16772558

 10715237

 16777195

 8939341

 7229238

 5519392

 3941130

 2428416

 0

 14398872

 14398872

 14395778

 14401966

 14392428

 14405316

 14389334

 14408410

 14385984

 14411760

 14382890

 14414847

 14379541

 14417919

 14376704

Harmonies

Analogous

The Analogous color harmony consists of three colors that are next to each other on the color wheel.



15052966



14398872



13221012

Triad

The Triadic color harmony groups three colors that are evenly spaced from another and form a triangle on the color wheel.



14398872



9029823



12891870

Complementary

The Complementary color scheme is a pair of colors which are on the opposite of each other on the color wheel.



14398872



10010331

Split Complementary

Split-complementary colors differ from the complementary color scheme. The scheme consists of three colors, the original color and two neighbors of the complement color.



11058660



14398872



8701906

Square

The Square scheme is like the rectangle color scheme, but the four colors are evenly spaced on the color wheel.



14398872



10208938



9487328



14266574

Rectangle

The Rectangle color scheme consists of four colors that form a rectangle on the color wheel.



14398872



12238999



9487328



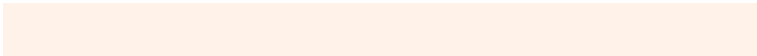
12302561

Sweetspot

The Sweet Spot groups the original color and five complimentary colors.



14398872



16773864



14391487



8419441



0



8421504

Same Dimension

The Same Dimension uses a secret algorithm to generate beautiful new colors.



14398872



16763297



14407064



7235427



11356928



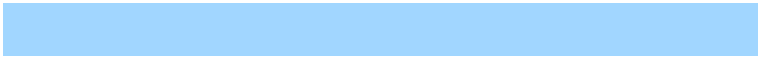
3019776

Inverse Universe

The Inverse Universe completely reimagines the original color for something new.



10010331



10606335



10002139



6515054



25261



6702

Previews

White Background



This preview shows how the Decimal color 14398872 looks on a white background.

Color Contrast Check

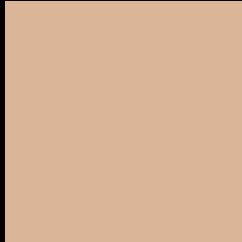
Large Text (above 18pt) WCAG AA × Fail

Any Text WCAG AA × Fail

Large Text (above 18pt) WCAG AAA × Fail

Any Text WCAG AAA × Fail

Black Background



This preview shows how the Decimal color 14398872 looks on a black background.

Color Contrast Check

Large Text (above 18pt) WCAG AA ✓ Pass

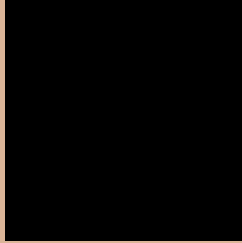
Any Text WCAG AA ✓ Pass

Large Text (above 18pt) WCAG AAA ✓ Pass

Any Text WCAG AAA ✓ Pass

If you want to check with other color combinations, try the [Color Contrast Checker](#).

Decimal 14398872 Background



This preview shows how black text looks on a background with the Decimal color 14398872.




This preview shows how white text looks on a background with the Decimal color 14398872.

Color Blindness Simulation

Color vision deficiency is a very complex topic, and I could not describe the different causes any better than Wikipedia does, so if you want to learn more, you should check out their [article about color blindness](#).

Dichromacy





Tritanopia
14659773

Trichromacy



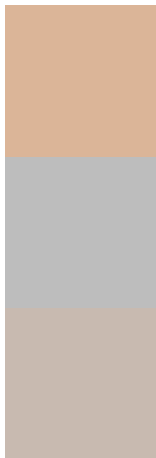
Original Color
14398872

Protanomaly
13547930

Deuteranomaly
14398872

Tritanomaly
14594736

Monochromacy



Original Color
14398872

Achromatopsia
12434877

Achromatomaly
13154992

CSS Examples

Text

The CSS property to change the color of the text to Decimal 14398872 is called "color". The color property can be set on classes, ids or directly on the HTML element.

This example shows how text in the color #DBB598 looks like.

```
.text, #text, p{  
    color:#DBB598  
}
```

If you want to add a text shadow in that color use the text-shadow property, you can generate a text shadow directly with our [CSS Text Shadow Generator](#).

Here you see how black text with a 4 pixel #DBB598 colored shadow looks like.

```
.shadow{ text-shadow: 4px 4px 2px #DBB598
}
```

Border

The CSS property to change the border of an element to Decimal 14398872 is called "border". The border property can be set on classes, ids or directly on the HTML element.

This example shows the color as border, it can be applied via the CSS property "border" or "border-color".

```
.border, #border, table{ border:4px solid
#DBB598 }
```

If only the border color should be changed use the property `border-color`.

```
.border{ border-color:#DBB598 }
```

If you want to add a box shadow in that color use:

Here you see how a box with a 4 pixel #DBB598 colored shadow looks like.

```
.boxshadow{ -moz-box-shadow:4px 4px 4px  
4px #DBB598; -webkit-box-shadow:4px 4px  
4px 4px #DBB598; box-shadow:4px 4px 4px  
4px #DBB598 }
```

Background

The CSS property to change the background color of an element to Decimal 14398872 is called "background". The background property can be set on classes, ids or directly on the HTML element.

```
.background, #background, body{  
background:#DBB598 }
```

If only the background color should be changed can be used:

```
.background{ background-color:#DBB598 }
```

This example shows the color as background, it is applied via the CSS property "background".

To optimize and compress your CSS code, you can use our [online CSS compressor and optimizer](#) based on csstidy. If you want to create a linear or radial gradient as background or border, check our [CSS Gradient Generator](#).

Hey! You found this booklet interesting? Support Converting Colors with the new Membership Option!

The pro membership hides all ads, plus gives you double the colors in the color bucket, and more awesome pro features!

[Learn more, Memberships starting at \\$2.50/m!](#)

**Follow me
on Twitter!**

@ConvertingColor