

Converting Colors

Decimal(14399378)

Have a look what the booklet for
Decimal(14399378) contains.

Decimal(14399378)	3
<i>Conversions</i>	4
<i>Details</i>	6
<i>Harmonies</i>	11
<i>Previews</i>	23
<i>Color Blindness Simulation</i>	26
<i>CSS Examples</i>	29

Color

Decimal(14399378)

Conversions

Conversions Part 1

Format	Color
Hex	DBB792
RGB	219, 183, 146
RGB Percent	86%, 72%, 57%
CMY	0.1412, 0.2824, 0.4275
CMYK	0.00, 0.16, 0.33, 0.14
HSL	30°, 50%, 72%
HSV	30°, 33%, 86%
XYZ	51.3352, 51.0024, 34.3329
YIQ	189.5460, 33.3330, -3.8750

Conversions

Conversions Part 2

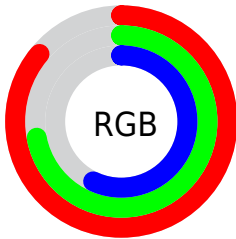
Format	Color
RYB	217, 219, 146
Decimal	14399378
CIELab	76.68, 7.70, 23.67
CIELCh	77, 24.888, 71.968
Yxy	51.0024, 0.3756, 0.3732
Android (android.graphics.Color)	4292589458 (0xFFDDBB792)
YUV	189.5460, -21.4682, 25.8312
Hunter-Lab	71.4159, 3.3315, 21.4877

Details

The Decimal color **14399378** is a light color, and the websafe version is hex **FFCC99**. A complement of this color would be **9615067**, and the grayscale version is **12500670**.

A 20% lighter version of the original color is **16773064**, and **10715743** is the 20% darker color. If you saturate the color by 10%, you get **14396540**, and if you desaturate by 10%, it is **14402216**.

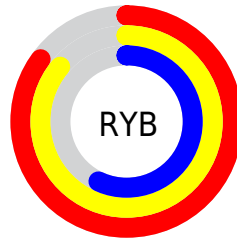
Distribution



Red (86%)

Green (72%)

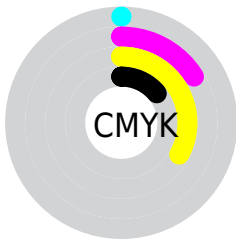
Blue (57%)



Red (85%)

Yellow (86%)

Blue (57%)

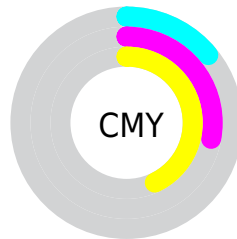


Cyan (0%)

Magenta (16%)

Yellow (33%)

Black (14%)



Cyan (14%)

Magenta (28%)

Yellow (43%)

Brightness & Saturation Gradients

These gradients show how the Decimal color 14399378 changes by changing the brightness by 10 percent. The first figure shows a shift by +10% for each color and the second figure -10%.

Similar to the brightness gradients but the following saturation gradients show a change of the Decimal color 14399378 by changing the saturation by 10% instead.

 14399378

 14399378

16777215

 12557432

 16773064

 10715743

 16777188

 8939847

 7164208

 5519899

 3941378

 2363392

 0

 14399378

 14399378

 14396540

 14402216

 14393702

 14405054

 14391120

 14407636

 14388282

 14410474

 14385445

 14413311

 14382607

 14416127

 14380800

 14417919

Harmonies

Analogous

The Analogous color harmony consists of three colors that are next to each other on the color wheel.



15315103



14399378



12959632

Triad

The Triadic color harmony groups three colors that are evenly spaced from another and form a triangle on the color wheel.



14399378



8374982



13415648

Complementary

The Complementary color scheme is a pair of colors which are on the opposite of each other on the color wheel.



14399378



9615067

Split Complementary

Split-complementary colors differ from the complementary color scheme. The scheme consists of three colors, the original color and two neighbors of the complement color.



11451626



14399378



8243419

Square

The Square scheme is like the rectangle color scheme, but the four colors are evenly spaced on the color wheel.



14399378



9554350



9487336



14855884

Rectangle

The Rectangle color scheme consists of four colors that form a rectangle on the color wheel.



14399378



11846550



9487336



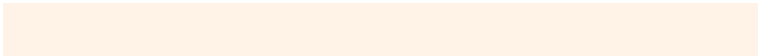
12826596

Sweetspot

The Sweet Spot groups the original color and five complimentary colors.



14399378



16773862



14389943



8419440



0



8421504

Same Dimension

The Same Dimension uses a secret algorithm to generate beautiful new colors.



14399378



16764313



14408594



7235683



11360256



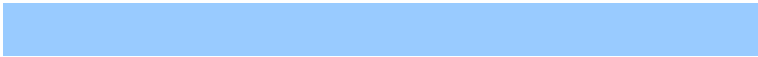
3020544

Inverse Universe

The Inverse Universe completely reimagines the original color for something new.



9615067



10079231



9605851



6514798



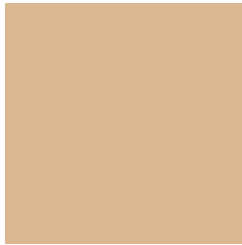
22189



5934

Previews

White Background



This preview shows how the Decimal color 14399378 looks on a white background.

Color Contrast Check

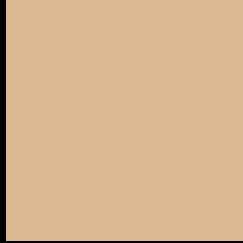
Large Text (above 18pt) WCAG AA × Fail

Any Text WCAG AA × Fail

Large Text (above 18pt) WCAG AAA × Fail

Any Text WCAG AAA × Fail

Black Background



This preview shows how the Decimal color 14399378 looks on a black background.

Color Contrast Check

Large Text (above 18pt) WCAG AA ✓ Pass

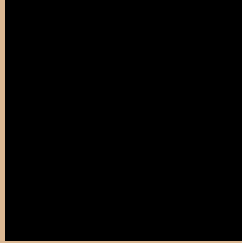
Any Text WCAG AA ✓ Pass

Large Text (above 18pt) WCAG AAA ✓ Pass

Any Text WCAG AAA ✓ Pass

If you want to check with other color combinations, try the [Color Contrast Checker](#).

Decimal 14399378 Background



This preview shows how black text looks on a background with the Decimal color 14399378.



This preview shows how white text looks on a background with the Decimal color 14399378.

Color Blindness Simulation

Color vision deficiency is a very complex topic, and I could not describe the different causes any better than Wikipedia does, so if you want to learn more, you should check out their [article about color blindness](#).


Dichromacy



Original Color
14399378

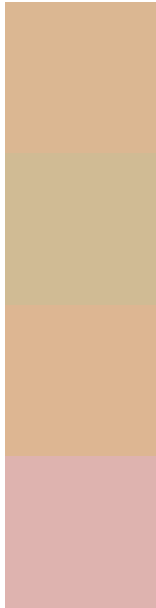
Protanopia
13286805

Deuteranopia
14595730



Tritanopia
14725567

Trichromacy



Original Color
14399378

Protanomaly
13679508

Deuteranomaly
14530194

Tritanomaly
14594991

Monochromacy



Original Color
14399378

Achromatopsia
12500670

Achromatomaly
13220782

CSS Examples

Text

The CSS property to change the color of the text to Decimal 14399378 is called "color". The color property can be set on classes, ids or directly on the HTML element.

This example shows how text in the color #DBB792 looks like.

```
.text, #text, p{  
    color:#DBB792  
}
```

If you want to add a text shadow in that color use the text-shadow property, you can generate a text shadow directly with our [CSS Text Shadow Generator](#).

Here you see how black text with a 4 pixel #DBB792 colored shadow looks like.

```
.shadow{ text-shadow: 4px 4px 2px #DBB792
}
```

Border

The CSS property to change the border of an element to Decimal 14399378 is called "border". The border property can be set on classes, ids or directly on the HTML element.

This example shows the color as border, it can be applied via the CSS property "border" or "border-color".

```
.border, #border, table{ border:4px solid
#DBB792 }
```

If only the border color should be changed use the property `border-color`.

```
.border{ border-color:#DBB792 }
```

If you want to add a box shadow in that color use:

Here you see how a box with a 4 pixel #DBB792 colored shadow looks like.

```
.boxshadow{ -moz-box-shadow:4px 4px 4px  
4px #DBB792; -webkit-box-shadow:4px 4px  
4px 4px #DBB792; box-shadow:4px 4px 4px  
4px #DBB792 }
```

Background

The CSS property to change the background color of an element to Decimal 14399378 is called "background". The background property can be set on classes, ids or directly on the HTML element.

```
.background, #background, body{  
background:#DBB792 }
```

If only the background color should be changed can be used:

```
.background{ background-color:#DBB792 }
```

This example shows the color as background, it is applied via the CSS property "background".

To optimize and compress your CSS code, you can use our [online CSS compressor and optimizer](#) based on csstidy. If you want to create a linear or radial gradient as background or border, check our [CSS Gradient Generator](#).

Hey! You found this booklet interesting? Support Converting Colors with the new Membership Option!

The pro membership hides all ads, plus gives you double the colors in the color bucket, and more awesome pro features!

[Learn more, Memberships starting at \\$2.50/m!](#)

**Follow me
on Twitter!**

@ConvertingColor