

Converting Colors

Decimal(14399394)

Have a look what the booklet for
Decimal(14399394) contains.

Decimal(14399394)	3
<i>Conversions</i>	4
<i>Details</i>	6
<i>Harmonies</i>	11
<i>Previews</i>	23
<i>Color Blindness Simulation</i>	26
<i>CSS Examples</i>	29

Color

Decimal(14399394)

Conversions

Conversions Part 1

Format	Color
Hex	DBB7A2
RGB	219, 183, 162
RGB Percent	86%, 72%, 64%
CMY	0.1412, 0.2824, 0.3647
CMYK	0.00, 0.16, 0.26, 0.14
HSL	22°, 44%, 75%
HSV	22°, 26%, 86%
XYZ	52.6685, 51.5357, 41.3539
YIQ	191.3700, 28.1970, 1.1010

Conversions

Conversions Part 2

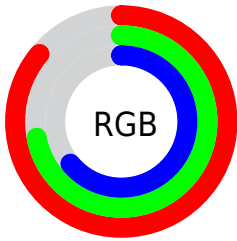
Format	Color
R _Y B	219, 195, 162
Decimal	14399394
CIE Lab	77.00, 9.81, 15.51
CIE LCh	77, 18.354, 57.685
Yxy	51.5357, 0.3618, 0.3541
Android (android.graphics.Color)	4292589474 (0xFFDDBB7A2)
YUV	191.3700, -14.4794, 24.2315
Hunter-Lab	71.7884, 5.3293, 16.0977

Details

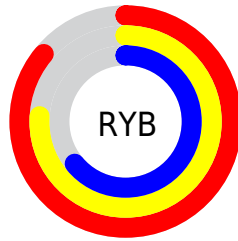
The Decimal color **14399394** is a light color, and the websafe version is hex **FFCCCC**. A complement of this color would be **10667739**, and the grayscale version is **12566463**.

A 20% lighter version of the original color is **16773081**, and **10715758** is the 20% darker color. If you saturate the color by 10%, you get **14395788**, and if you desaturate by 10%, it is **14403000**.

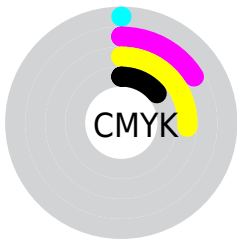
Distribution



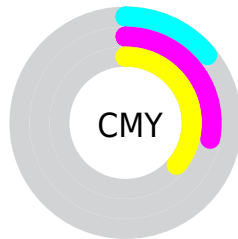
- Red (86%)
- Green (72%)
- Blue (64%)



- Red (86%)
- Yellow (76%)
- Blue (64%)



- Cyan (0%)
- Magenta (16%)
- Yellow (26%)
- Black (14%)



- Cyan (14%)
- Magenta (28%)
- Yellow (36%)

Brightness & Saturation Gradients

These gradients show how the Decimal color 14399394 changes by changing the brightness by 10 percent. The first figure shows a shift by +10% for each color and the second figure -10%.

Similar to the brightness gradients but the following saturation gradients show a change of the Decimal color 14399394 by changing the saturation by 10% instead.

 14399394

 14399394

16777215

 12557448

 16773081

 10715758

 16777205

 8939862

 7229759

 5585449

 4006932

 2560000

 0

 14399394

 14399394

 14395788

 14403000

 14392182

 14406606

 14388832

 14409956

 14385226

 14413562

 14381620

 14417151

 14378015

 14417919

 14374409

 14373120

Harmonies

Analogous

The Analogous color harmony consists of three colors that are next to each other on the color wheel.



14857135



14399394



13483164

Triad

The Triadic color harmony groups three colors that are evenly spaced from another and form a triangle on the color wheel.



14399394



9947324



12630748

Complementary

The Complementary color scheme is a pair of colors which are on the opposite of each other on the color wheel.



14399394



10667739

Split Complementary

Split-complementary colors differ from the complementary color scheme. The scheme consists of three colors, the original color and two neighbors of the complement color.



11124960



14399394



9554125

Square

The Square scheme is like the rectangle color scheme, but the four colors are evenly spaced on the color wheel.



14399394



10995371



10012122



13874641

Rectangle

The Rectangle color scheme consists of four colors that form a rectangle on the color wheel.



14399394



12697758



10012122



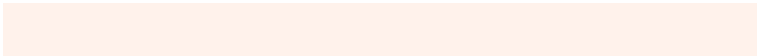
12106974

Sweetspot

The Sweet Spot groups the original color and five complimentary colors.



14399394



16773867



14394054



8419187



0



8421504

Same Dimension

The Same Dimension uses a secret algorithm to generate beautiful new colors.



14399394



16764336



14406562



7235427



11354112



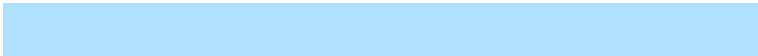
3019008

Inverse Universe

The Inverse Universe completely reimagines the original color for something new.



10667739



11592447



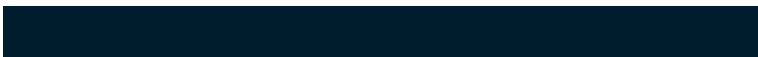
10660571



6515310



28333



7470

Previews

White Background



This preview shows how the Decimal color 14399394 looks on a white background.

Color Contrast Check

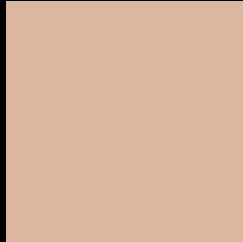
Large Text (above 18pt) WCAG AA × Fail

Any Text WCAG AA × Fail

Large Text (above 18pt) WCAG AAA × Fail

Any Text WCAG AAA × Fail

Black Background



This preview shows how the Decimal color 14399394 looks on a black background.

Color Contrast Check

Large Text (above 18pt) WCAG AA ✓ Pass

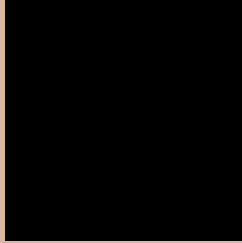
Any Text WCAG AA ✓ Pass

Large Text (above 18pt) WCAG AAA ✓ Pass

Any Text WCAG AAA ✓ Pass

If you want to check with other color combinations, try the [Color Contrast Checker](#).

Decimal 14399394 Background



This preview shows how black text looks on a background with the Decimal color 14399394.




This preview shows how white text looks on a background with the Decimal color 14399394.

Color Blindness Simulation

Color vision deficiency is a very complex topic, and I could not describe the different causes any better than Wikipedia does, so if you want to learn more, you should check out their [article about color blindness](#).

Dichromacy





Tritanopia
14660544

Trichromacy



Original Color
14399394

Protanomaly
13548452

Deuteranomaly
14399394

Tritanomaly
14595253

Monochromacy



Original Color
14399394

Achromatopsia
12566463

Achromatomaly
13221044

CSS Examples

Text

The CSS property to change the color of the text to Decimal 14399394 is called "color". The color property can be set on classes, ids or directly on the HTML element.

This example shows how text in the color #DBB7A2 looks like.

```
.text, #text, p{  
    color:#DBB7A2  
}
```

If you want to add a text shadow in that color use the text-shadow property, you can generate a text shadow directly with our [CSS Text Shadow Generator](#).

Here you see how black text with a 4 pixel #DBB7A2 colored shadow looks like.

```
.shadow{ text-shadow: 4px 4px 2px #DBB7A2
}
```

Border

The CSS property to change the border of an element to Decimal 14399394 is called "border". The border property can be set on classes, ids or directly on the HTML element.

This example shows the color as border, it can be applied via the CSS property "border" or "border-color".

```
.border, #border, table{ border:4px solid
#DBB7A2 }
```

If only the border color should be changed use the property `border-color`.

```
.border{ border-color:#DBB7A2 }
```

If you want to add a box shadow in that color use:

Here you see how a box with a 4 pixel #DBB7A2 colored shadow looks like.

```
.boxshadow{ -moz-box-shadow:4px 4px 4px  
4px #DBB7A2; -webkit-box-shadow:4px 4px  
4px 4px #DBB7A2; box-shadow:4px 4px 4px  
4px #DBB7A2 }
```

Background

The CSS property to change the background color of an element to Decimal 14399394 is called "background". The background property can be set on classes, ids or directly on the HTML element.

```
.background, #background, body{  
background:#DBB7A2 }
```

If only the background color should be changed can be used:

```
.background{ background-color:#DBB7A2 }
```

This example shows the color as background, it is applied via the CSS property "background".

To optimize and compress your CSS code, you can use our [online CSS compressor and optimizer](#) based on csstidy. If you want to create a linear or radial gradient as background or border, check our [CSS Gradient Generator](#).

Hey! You found this booklet interesting? Support Converting Colors with the new Membership Option!

The pro membership hides all ads, plus gives you double the colors in the color bucket, and more awesome pro features!

[Learn more, Memberships starting at \\$2.50/m!](#)

**Follow me
on Twitter!**

@ConvertingColor