

# Converting Colors

Decimal(14399934)

Have a look what the booklet for  
Decimal(14399934) contains.

<b>Decimal(14399934)</b> .....	3
<i><b>Conversions</b></i> .....	4
<i><b>Details</b></i> .....	6
<i><b>Harmonies</b></i> .....	11
<i><b>Previews</b></i> .....	23
<i><b>Color Blindness Simulation</b></i> .....	26
<i><b>CSS Examples</b></i> .....	29

# **Color**

**Decimal(14399934)**

# Conversions

## Conversions Part 1

Format	Color
Hex	DBB9BE
RGB	219, 185, 190
RGB Percent	86%, 73%, 75%
CMY	0.1412, 0.2745, 0.2549
CMYK	0.00, 0.16, 0.13, 0.14
HSL	351°, 32%, 79%
HSV	351°, 16%, 86%
XYZ	55.8566, 53.4757, 56.0931
YIQ	195.7360, 18.6590, 8.7630

# Conversions

## Conversions Part 2

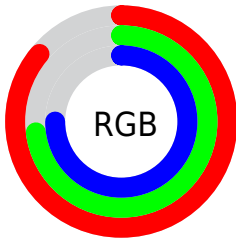
<b>Format</b>	<b>Color</b>
R <sub>Y</sub> B	219, 185, 190
Decimal	14399934
CIE Lab	78.16, 12.97, 2.01
CIE LCh	78, 13.122, 8.797
Yxy	53.4757, 0.3377, 0.3233
Android (android.graphics.Color)	4292590014 (0xFFDDBB9BE)
YUV	195.7360, -2.8278, 20.4025
Hunter-Lab	73.1271, 8.3712, 5.7098

# Details

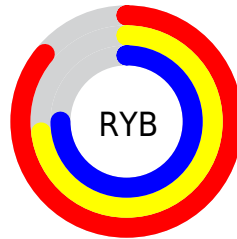
The Decimal color **14399934** is a light color, and the websafe version is hex **FFCCCC**. A complement of this color would be **12180438**, and the grayscale version is **12895428**.

A 20% lighter version of the original color is **16773622**, and **10781833** is the 20% darker color. If you saturate the color by 10%, you get **14394283**, and if you desaturate by 10%, it is **14405585**.

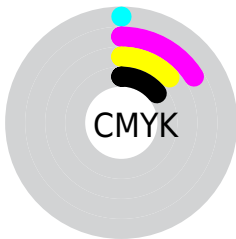
# Distribution



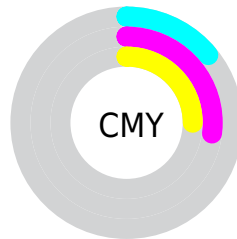
- Red (86%)
- Green (73%)
- Blue (75%)



- Red (86%)
- Yellow (73%)
- Blue (75%)



- Cyan (0%)
- Magenta (16%)
- Yellow (13%)
- Black (14%)



- Cyan (14%)
- Magenta (27%)
- Yellow (25%)

# Brightness & Saturation Gradients

These gradients show how the Decimal color 14399934 changes by changing the brightness by 10 percent. The first figure shows a shift by +10% for each color and the second figure -10%.

Similar to the brightness gradients but the following saturation gradients show a change of the Decimal color 14399934 by changing the saturation by 10% instead.



 14399934

16777215

 16773622

 14399934

 12557987

 10781833

 9005935

 7295575

 5716800

 4138282

 2625813

 851968

 0

 14399934

 14399934

 14394283

 14405585

 14388633

 14411235

 14382982

 14416886

 14377331

 14417919

 14371937

 14366286

 14360635

 14354985

 14352416

# Harmonies

## Analogous

The Analogous color harmony consists of three colors that are next to each other on the color wheel.



14006986



14399934



14334643

# Triad

The Triadic color harmony groups three colors that are evenly spaced from another and form a triangle on the color wheel.



14399934



12240302



11257304

# Complementary

The Complementary color scheme is a pair of colors which are on the opposite of each other on the color wheel.



14399934



12180438

# Split Complementary

Split-complementary colors differ from the complementary color scheme. The scheme consists of three colors, the original color and two neighbors of the complement color.



10733776



14399934



11323576

# Square

The Square scheme is like the rectangle color scheme, but the four colors are evenly spaced on the color wheel.



14399934



13157033



10799556



12173785

# Rectangle

The Rectangle color scheme consists of four colors that form a rectangle on the color wheel.



14399934



14073005



10799556



10995414



# Sweetspot

The Sweet Spot groups the original color and five complimentary colors.



14399934



16773876



14072283



8419449



0



8421504



# Same Dimension

The Same Dimension uses a secret algorithm to generate beautiful new colors.



14399934



16764886



14403001



7234404



11337754



3014663



# Inverse Universe

The Inverse Universe completely reimagines the original color for something new.



14399934



16764886



12177371



7234404



11337754

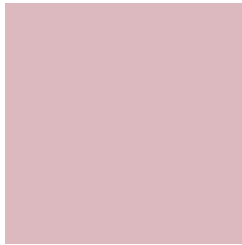


3014663



# Previews

## White Background



This preview shows how the Decimal color 14399934 looks on a white background.

## Color Contrast Check

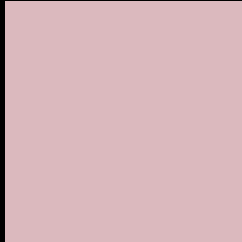
Large Text (above 18pt) WCAG AA × Fail

Any Text WCAG AA × Fail

Large Text (above 18pt) WCAG AAA × Fail

Any Text WCAG AAA × Fail

# Black Background



This preview shows how the Decimal color 14399934 looks on a black background.

## Color Contrast Check

Large Text (above 18pt) WCAG AA ✓ Pass

Any Text WCAG AA ✓ Pass

Large Text (above 18pt) WCAG AAA ✓ Pass

Any Text WCAG AAA ✓ Pass

If you want to check with other color combinations, try the [Color Contrast Checker](#).



## Decimal 14399934 Background



This preview shows how black text looks on a background with the Decimal color 14399934.




This preview shows how white text looks on a background with the Decimal color 14399934.

# Color Blindness Simulation

Color vision deficiency is a very complex topic, and I could not describe the different causes any better than Wikipedia does, so if you want to learn more, you should check out their [article about color blindness](#).

## Dichromacy





**Tritanopia**  
14465222

# Trichromacy



**Original Color**  
14399934

**Protanomaly**  
13483457

**Deuteranomaly**  
14138046

**Tritanomaly**  
14465219

# Monochromacy



**Original Color**  
14399934

**Achromatopsia**  
12895428

**Achromatomaly**  
13418690

# CSS Examples

## Text

The CSS property to change the color of the text to Decimal 14399934 is called "color". The color property can be set on classes, ids or directly on the HTML element.

This example shows how text in the color #DBB9BE looks like.

```
.text, #text, p{  
  color:#DBB9BE  
}
```

If you want to add a text shadow in that color use the text-shadow property, you can generate a text shadow directly with our [CSS Text Shadow Generator](#).

Here you see how black text with a 4 pixel #DBB9BE colored shadow looks like.

```
.shadow{ text-shadow: 4px 4px 2px #DBB9BE
}
```

## Border

The CSS property to change the border of an element to Decimal 14399934 is called "border". The border property can be set on classes, ids or directly on the HTML element.

This example shows the color as border, it can be applied via the CSS property "border" or "border-color".

```
.border, #border, table{ border:4px solid
#DBB9BE }
```

If only the border color should be changed use the property `border-color`.

```
.border{ border-color:#DBB9BE }
```

If you want to add a box shadow in that color use:

Here you see how a box with a 4 pixel #DBB9BE colored shadow looks like.

```
.boxshadow{ -moz-box-shadow:4px 4px 4px  
4px #DBB9BE; -webkit-box-shadow:4px 4px  
4px 4px #DBB9BE; box-shadow:4px 4px 4px  
4px #DBB9BE }
```

# Background

The CSS property to change the background color of an element to Decimal 14399934 is called "background". The background property can be set on classes, ids or directly on the HTML element.

```
.background, #background, body{  
background:#DBB9BE }
```

If only the background color should be changed can be used:

```
.background{ background-color:#DBB9BE }
```

This example shows the color as background, it is applied via the CSS property "background".

To optimize and compress your CSS code, you can use our [online CSS compressor and optimizer](#) based on csstidy. If you want to create a linear or radial gradient as background or border, check our [CSS Gradient Generator](#).



Hey! You found this booklet interesting? Support Converting Colors with the new Membership Option!

The pro membership hides all ads, plus gives you double the colors in the color bucket, and more awesome pro features!

**[Learn more, Memberships starting at \\$2.50/m!](#)**

**Follow me  
on Twitter!**

@ConvertingColor