

# Converting Colors

Decimal(14400161)

Have a look what the booklet for  
Decimal(14400161) contains.

<b>Decimal(14400161)</b> .....	3
<i><b>Conversions</b></i> .....	4
<i><b>Details</b></i> .....	6
<i><b>Harmonies</b></i> .....	11
<i><b>Previews</b></i> .....	23
<i><b>Color Blindness Simulation</b></i> .....	26
<i><b>CSS Examples</b></i> .....	29

# **Color**

**Decimal(14400161)**

# Conversions

## Conversions Part 1

Format	Color
Hex	DBBAA1
RGB	219, 186, 161
RGB Percent	86%, 73%, 63%
CMY	0.1412, 0.2706, 0.3686
CMYK	0.00, 0.15, 0.26, 0.14
HSL	26°, 45%, 75%
HSV	26°, 26%, 86%
XYZ	53.2053, 52.7511, 41.0960
YIQ	193.0170, 27.6930, -0.7790

# Conversions

## Conversions Part 2

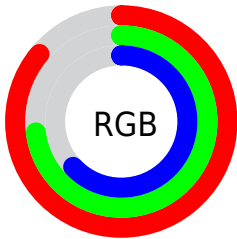
<b>Format</b>	<b>Color</b>
<b>R<sub>YB</sub></b>	219, 205, 161
Decimal	14400161
CIE <sub>Lab</sub>	77.73, 8.08, 17.06
CIE <sub>LCh</sub>	78, 18.878, 64.674
Yxy	52.7511, 0.3618, 0.3587
Android (android.graphics.Color)	4292590241 (0xFFDBBAA1)
YUV	193.0170, -15.7844, 22.7871
Hunter-Lab	72.6299, 3.6585, 17.2931

# Details

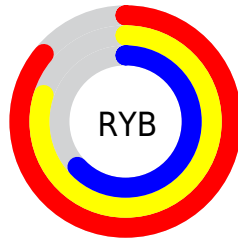
The Decimal color **14400161** is a light color, and the websafe version is hex **FFCCCC**. A complement of this color would be **10601179**, and the grayscale version is **12698049**.

A 20% lighter version of the original color is **16773848**, and **10716525** is the 20% darker color. If you saturate the color by 10%, you get **14397067**, and if you desaturate by 10%, it is **14403255**.

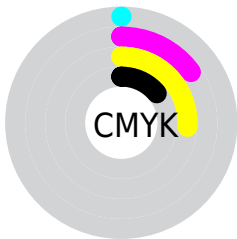
# Distribution



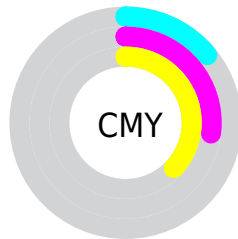
- Red (86%)
- Green (73%)
- Blue (63%)



- Red (86%)
- Yellow (80%)
- Blue (63%)



- Cyan (0%)
- Magenta (15%)
- Yellow (26%)
- Black (14%)



- Cyan (14%)
- Magenta (27%)
- Yellow (37%)

# Brightness & Saturation Gradients

These gradients show how the Decimal color 14400161 changes by changing the brightness by 10 percent. The first figure shows a shift by +10% for each color and the second figure -10%.

Similar to the brightness gradients but the following saturation gradients show a change of the Decimal color 14400161 by changing the saturation by 10% instead.



 14400161

 14400161

16777215

 12558215

 16773848

 10716525

 16777204

 8940629

 7230270

 5585960

 4007699

 2560512

 0

 14400161

 14400161

 14397067

 14403255

 14393717

 14406605

 14390623

 14409699

 14387273

 14413049

 14384179

 14416127

 14380830

 14417919

 14377736

 14376448

# Harmonies

## Analogous

The Analogous color harmony consists of three colors that are next to each other on the color wheel.



14988717



14400161



13353117

# Triad

The Triadic color harmony groups three colors that are evenly spaced from another and form a triangle on the color wheel.



14400161



9816770



13089757

# Complementary

The Complementary color scheme is a pair of colors which are on the opposite of each other on the color wheel.



14400161



10601179

# Split Complementary

Split-complementary colors differ from the complementary color scheme. The scheme consists of three colors, the original color and two neighbors of the complement color.



11583971



14400161



9619923

# Square

The Square scheme is like the rectangle color scheme, but the four colors are evenly spaced on the color wheel.



14400161



10799537



10274527



14268111

# Rectangle

The Rectangle color scheme consists of four colors that form a rectangle on the color wheel.



14400161



12501920



10274527



12565984

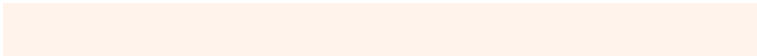


# Sweetspot

The Sweet Spot groups the original color and five complimentary colors.



14400161



16774123



14393795



8419443



0



8421504



# Same Dimension

The Same Dimension uses a secret algorithm to generate beautiful new colors.



14400161



16765357



14407329



7235427



11356928



3019776

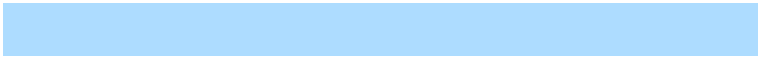


# Inverse Universe

The Inverse Universe completely reimagines the original color for something new.



10601179



11394303



10594011



6515054



25517



6702



# Previews

## White Background



This preview shows how the Decimal color 14400161 looks on a white background.

## Color Contrast Check

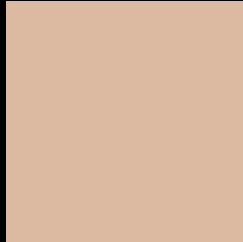
Large Text (above 18pt) WCAG AA × Fail

Any Text WCAG AA × Fail

Large Text (above 18pt) WCAG AAA × Fail

Any Text WCAG AAA × Fail

# Black Background



This preview shows how the Decimal color 14400161 looks on a black background.

## Color Contrast Check

Large Text (above 18pt) WCAG AA ✓ Pass

Any Text WCAG AA ✓ Pass

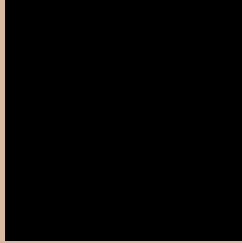
Large Text (above 18pt) WCAG AAA ✓ Pass

Any Text WCAG AAA ✓ Pass

If you want to check with other color combinations, try the [Color Contrast Checker](#).



## Decimal 14400161 Background



This preview shows how black text looks on a background with the Decimal color 14400161.




This preview shows how white text looks on a background with the Decimal color 14400161.

# Color Blindness Simulation

Color vision deficiency is a very complex topic, and I could not describe the different causes any better than Wikipedia does, so if you want to learn more, you should check out their [article about color blindness](#).

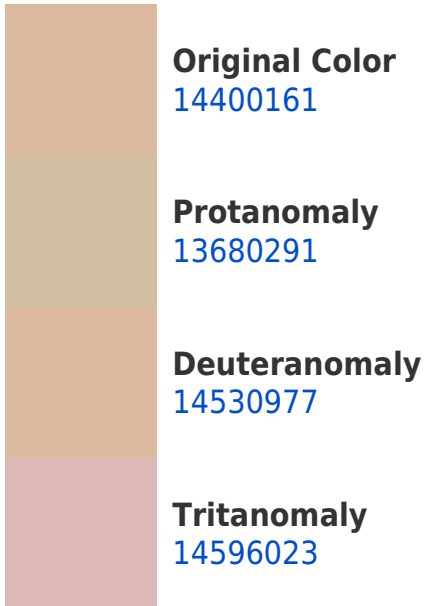
## Dichromacy





**Tritanopia**  
14661059

# Trichromacy



# Monochromacy



# CSS Examples

## Text

The CSS property to change the color of the text to Decimal 14400161 is called "color". The color property can be set on classes, ids or directly on the HTML element.

This example shows how text in the color #DBBAA1 looks like.

```
.text, #text, p{  
    color:#DBBAA1  
}
```

If you want to add a text shadow in that color use the text-shadow property, you can generate a text shadow directly with our [CSS Text Shadow Generator](#).

Here you see how black text with a 4 pixel #DBBAA1 colored shadow looks like.

```
.shadow{ text-shadow: 4px 4px 2px #DBBAA1
}
```

## Border

The CSS property to change the border of an element to Decimal 14400161 is called "border". The border property can be set on classes, ids or directly on the HTML element.

This example shows the color as border, it can be applied via the CSS property "border" or "border-color".

```
.border, #border, table{ border:4px solid
#DBBAA1 }
```

If only the border color should be changed use the property `border-color`.

```
.border{ border-color:#DBBAA1 }
```

If you want to add a box shadow in that color use:

Here you see how a box with a 4 pixel #DBBAA1 colored shadow looks like.

```
.boxshadow{ -moz-box-shadow:4px 4px 4px  
4px #DBBAA1; -webkit-box-shadow:4px 4px  
4px 4px #DBBAA1; box-shadow:4px 4px 4px  
4px #DBBAA1 }
```

# Background

The CSS property to change the background color of an element to Decimal 14400161 is called "background". The background property can be set on classes, ids or directly on the HTML element.

```
.background, #background, body{  
background:#DBBAA1 }
```

If only the background color should be changed can be used:

```
.background{ background-color:#DBBAA1 }
```

This example shows the color as background, it is applied via the CSS property "background".

To optimize and compress your CSS code, you can use our [online CSS compressor and optimizer](#) based on csstidy. If you want to create a linear or radial gradient as background or border, check our [CSS Gradient Generator](#).



Hey! You found this booklet interesting? Support Converting Colors with the new Membership Option!

The pro membership hides all ads, plus gives you double the colors in the color bucket, and more awesome pro features!

**[Learn more, Memberships starting at \\$2.50/m!](#)**

**Follow me  
on Twitter!**

@ConvertingColor