

# Converting Colors

Decimal(14401714)

Have a look what the booklet for  
Decimal(14401714) contains.

<b>Decimal(14401714)</b> .....	3
<i><b>Conversions</b></i> .....	4
<i><b>Details</b></i> .....	6
<i><b>Harmonies</b></i> .....	11
<i><b>Previews</b></i> .....	23
<i><b>Color Blindness Simulation</b></i> .....	26
<i><b>CSS Examples</b></i> .....	29

# **Color**

**Decimal(14401714)**

# Conversions

## Conversions Part 1

<b>Format</b>	<b>Color</b>
Hex	DBC0B2
RGB	219, 192, 178
RGB Percent	86%, 75%, 70%
CMY	0.1412, 0.2471, 0.3020
CMYK	0.00, 0.12, 0.19, 0.14
HSL	20°, 36%, 78%
HSV	20°, 19%, 86%
XYZ	56.0989, 55.9737, 49.9668
YIQ	198.4770, 20.5860, 1.3700

# Conversions

## Conversions Part 2

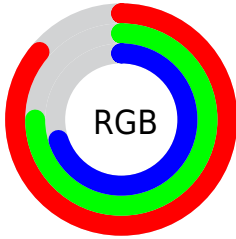
<b>Format</b>	<b>Color</b>
<b>R<sub>YB</sub></b>	219, 199, 178
Decimal	14401714
CIE Lab	79.60, 7.35, 10.56
CIE LCh	80, 12.865, 55.163
Yxy	55.9737, 0.3462, 0.3454
Android (android.graphics.Color)	4292591794 (0xFFDBC0B2)
YUV	198.4770, -10.0952, 17.9987
Hunter-Lab	74.8156, 2.9174, 12.7731

# Details

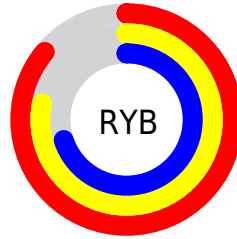
The Decimal color **14401714** is a light color, and the websafe version is hex **CCCCCC**. A complement of this color would be **11718107**, and the grayscale version is **13092807**.

A 20% lighter version of the original color is **16775402**, and **10783613** is the 20% darker color. If you saturate the color by 10%, you get **14398108**, and if you desaturate by 10%, it is **14405320**.

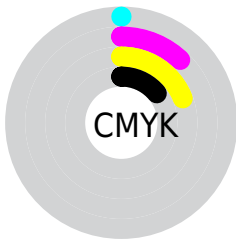
# Distribution



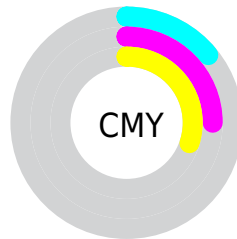
- Red (86%)
- Green (75%)
- Blue (70%)



- Red (86%)
- Yellow (78%)
- Blue (70%)



- Cyan (0%)
- Magenta (12%)
- Yellow (19%)
- Black (14%)



- Cyan (14%)
- Magenta (25%)
- Yellow (30%)

# Brightness & Saturation Gradients

These gradients show how the Decimal color 14401714 changes by changing the brightness by 10 percent. The first figure shows a shift by +10% for each color and the second figure -10%.

Similar to the brightness gradients but the following saturation gradients show a change of the Decimal color 14401714 by changing the saturation by 10% instead.



 14401714

 14401714

16777215

 12559767

 16775402

 10783613


 9007460

 7297356

 5652790

 4139808

 2627338

 917504

 0

 14401714

 14401714

 14398108

 14405320

 14394246

 14409182

 14390640

 14412788

 14386778

 14416639

 14383172

 14417919

 14379311

 14375705

 14372099

 14371584

# Harmonies

## Analogous

The Analogous color harmony consists of three colors that are next to each other on the color wheel.



14663356



14401714



13747374

# Triad

The Triadic color harmony groups three colors that are evenly spaced from another and form a triangle on the color wheel.



14401714



11259075



12960731

# Complementary

The Complementary color scheme is a pair of colors which are on the opposite of each other on the color wheel.



14401714



11718107

# Split Complementary

Split-complementary colors differ from the complementary color scheme. The scheme consists of three colors, the original color and two neighbors of the complement color.



11978717



14401714



10996943

# Square

The Square scheme is like the rectangle color scheme, but the four colors are evenly spaced on the color wheel.



14401714



11979703



11258584



13877203

# Rectangle

The Rectangle color scheme consists of four colors that form a rectangle on the color wheel.



14401714



13223598



11258584



12633308



# Sweetspot

The Sweet Spot groups the original color and five complimentary colors.



14401714



16774640



14398157



8419959



0



8421504



# Same Dimension

The Same Dimension uses a secret algorithm to generate beautiful new colors.



14401714



16767687



14406834



7235171



11352832



3018752

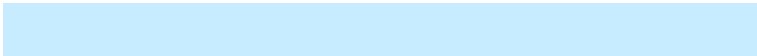


# Inverse Universe

The Inverse Universe completely reimagines the original color for something new.



11718107



13102335



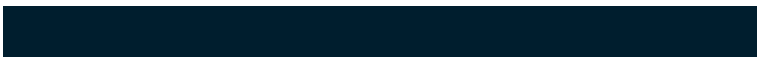
11712987



6515310



29357

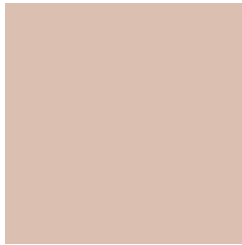


7726



# Previews

## White Background



This preview shows how the Decimal color 14401714 looks on a white background.

## Color Contrast Check

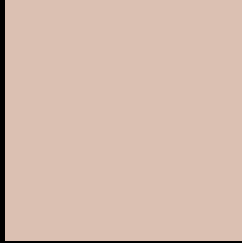
Large Text (above 18pt) WCAG AA × Fail

Any Text WCAG AA × Fail

Large Text (above 18pt) WCAG AAA × Fail

Any Text WCAG AAA × Fail

# Black Background



This preview shows how the Decimal color 14401714 looks on a black background.

## Color Contrast Check

Large Text (above 18pt) WCAG AA ✓ Pass

Any Text WCAG AA ✓ Pass

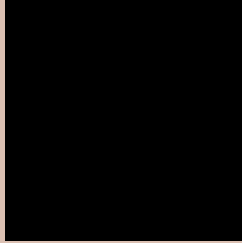
Large Text (above 18pt) WCAG AAA ✓ Pass

Any Text WCAG AAA ✓ Pass

If you want to check with other color combinations, try the [Color Contrast Checker](#).



## Decimal 14401714 Background



This preview shows how black text looks on a background with the Decimal color 14401714.




This preview shows how white text looks on a background with the Decimal color 14401714.

# Color Blindness Simulation

Color vision deficiency is a very complex topic, and I could not describe the different causes any better than Wikipedia does, so if you want to learn more, you should check out their [article about color blindness](#).

## Dichromacy





**Tritanopia**  
14597323

# Trichromacy



**Original Color**  
14401714

**Protanomaly**  
13812659

**Deuteranomaly**  
14598066

**Tritanomaly**  
14532034

# Monochromacy



**Original Color**  
14401714

**Achromatopsia**  
13027014

**Achromatomaly**  
13550783

# CSS Examples

## Text

The CSS property to change the color of the text to Decimal 14401714 is called "color". The color property can be set on classes, ids or directly on the HTML element.

This example shows how text in the color #DBC0B2 looks like.

```
.text, #text, p{  
  color:#DBC0B2  
}
```

If you want to add a text shadow in that color use the text-shadow property, you can generate a text shadow directly with our [CSS Text Shadow Generator](#).

Here you see how black text with a 4 pixel #DBC0B2 colored shadow looks like.

```
.shadow{ text-shadow: 4px 4px 2px #DBC0B2
}
```

## Border

The CSS property to change the border of an element to Decimal 14401714 is called "border". The border property can be set on classes, ids or directly on the HTML element.

This example shows the color as border, it can be applied via the CSS property "border" or "border-color".

```
.border, #border, table{ border:4px solid
#DBC0B2 }
```

If only the border color should be changed use the property `border-color`.

```
.border{ border-color:#DBC0B2 }
```

If you want to add a box shadow in that color use:

Here you see how a box with a 4 pixel #DBC0B2 colored shadow looks like.

```
.boxshadow{ -moz-box-shadow:4px 4px 4px  
4px #DBC0B2; -webkit-box-shadow:4px 4px  
4px 4px #DBC0B2; box-shadow:4px 4px 4px  
4px #DBC0B2 }
```

# Background

The CSS property to change the background color of an element to Decimal 14401714 is called "background". The background property can be set on classes, ids or directly on the HTML element.

```
.background, #background, body{  
background:#DBC0B2 }
```

If only the background color should be changed can be used:

```
.background{ background-color:#DBC0B2 }
```

This example shows the color as background, it is applied via the CSS property "background".

To optimize and compress your CSS code, you can use our [online CSS compressor and optimizer](#) based on csstidy. If you want to create a linear or radial gradient as background or border, check our [CSS Gradient Generator](#).



Hey! You found this booklet interesting? Support Converting Colors with the new Membership Option!

The pro membership hides all ads, plus gives you double the colors in the color bucket, and more awesome pro features!

**[Learn more, Memberships starting at \\$2.50/m!](#)**

**Follow me  
on Twitter!**

@ConvertingColor