

Converting Colors

Decimal(14401971)

Have a look what the booklet for
Decimal(14401971) contains.

Decimal(14401971)	3
<i>Conversions</i>	4
<i>Details</i>	6
<i>Harmonies</i>	11
<i>Previews</i>	23
<i>Color Blindness Simulation</i>	26
<i>CSS Examples</i>	29

Color

Decimal(14401971)

Conversions

Conversions Part 1

Format	Color
Hex	DBC1B3
RGB	219, 193, 179
RGB Percent	86%, 76%, 70%
CMY	0.1412, 0.2431, 0.2980
CMYK	0.00, 0.12, 0.18, 0.14
HSL	21°, 36%, 78%
HSV	21°, 18%, 86%
XYZ	56.4201, 56.4547, 50.5710
YIQ	199.1780, 19.9900, 1.1580

Conversions

Conversions Part 2

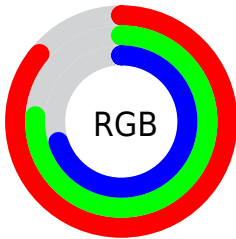
Format	Color
R _Y B	219, 201, 179
Decimal	14401971
CIE Lab	79.87, 6.97, 10.41
CIE LCh	80, 12.529, 56.194
Yxy	56.4547, 0.3452, 0.3454
Android (android.graphics.Color)	4292592051 (0xFFDBC1B3)
YUV	199.1780, -9.9478, 17.3839
Hunter-Lab	75.1363, 2.5476, 12.6899

Details

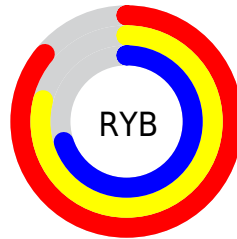
The Decimal color **14401971** is a light color, and the websafe version is hex **CCCCCC**. A complement of this color would be **11783643**, and the grayscale version is **13092807**.

A 20% lighter version of the original color is **16775659**, and **10783870** is the 20% darker color. If you saturate the color by 10%, you get **14398365**, and if you desaturate by 10%, it is **14405577**.

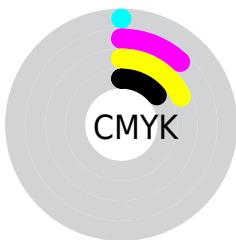
Distribution



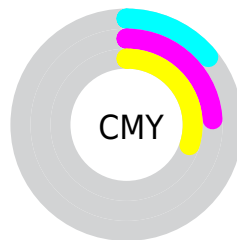
- Red (86%)
- Green (76%)
- Blue (70%)



- Red (86%)
- Yellow (79%)
- Blue (70%)



- Cyan (0%)
- Magenta (12%)
- Yellow (18%)
- Black (14%)



- Cyan (14%)
- Magenta (24%)
- Yellow (30%)

Brightness & Saturation Gradients

These gradients show how the Decimal color 14401971 changes by changing the brightness by 10 percent. The first figure shows a shift by +10% for each color and the second figure -10%.

Similar to the brightness gradients but the following saturation gradients show a change of the Decimal color 14401971 by changing the saturation by 10% instead.

 14401971

 14401971

16777215

 12560024

 16775659

 10783870

 9007717

 7297613

 5718583

 4140065

 2627339

 1048576

 0

 14401971

 14401971

 14398365

 14405577

 14394759

 14409183

 14390897

 14413045

 14387291

 14416639

 14383686

 14417919

 14380080

 14376218

 14372612

 14372096

Harmonies

Analogous

The Analogous color harmony consists of three colors that are next to each other on the color wheel.



14663612



14401971



13747631

Triad

The Triadic color harmony groups three colors that are evenly spaced from another and form a triangle on the color wheel.



14401971



11390404



13092059

Complementary

The Complementary color scheme is a pair of colors which are on the opposite of each other on the color wheel.



14401971



11783643

Split Complementary

Split-complementary colors differ from the complementary color scheme. The scheme consists of three colors, the original color and two neighbors of the complement color.



12109789



14401971



11128272

Square

The Square scheme is like the rectangle color scheme, but the four colors are evenly spaced on the color wheel.



14401971



12045241



11389913



13942995

Rectangle

The Rectangle color scheme consists of four colors that form a rectangle on the color wheel.



14401971



13223856



11389913



12764636

Sweetspot

The Sweet Spot groups the original color and five complimentary colors.



14401971



16775154



14398413



8420216



0



8421504

Same Dimension

The Same Dimension uses a secret algorithm to generate beautiful new colors.



14401971



16767943



14407091



7235427



11353344



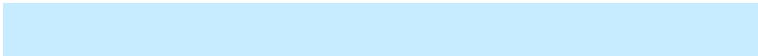
3018752

Inverse Universe

The Inverse Universe completely reimagines the original color for something new.



11783643



13102079



11778523



6515310



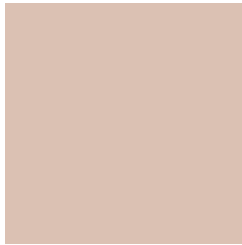
29101



7726

Previews

White Background



This preview shows how the Decimal color 14401971 looks on a white background.

Color Contrast Check

Large Text (above 18pt) WCAG AA × Fail

Any Text WCAG AA × Fail

Large Text (above 18pt) WCAG AAA × Fail

Any Text WCAG AAA × Fail

Black Background



This preview shows how the Decimal color 14401971 looks on a black background.

Color Contrast Check

Large Text (above 18pt) WCAG AA ✓ Pass

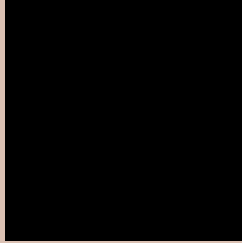
Any Text WCAG AA ✓ Pass

Large Text (above 18pt) WCAG AAA ✓ Pass

Any Text WCAG AAA ✓ Pass

If you want to check with other color combinations, try the [Color Contrast Checker](#).

Decimal 14401971 Background



This preview shows how black text looks on a background with the Decimal color 14401971.

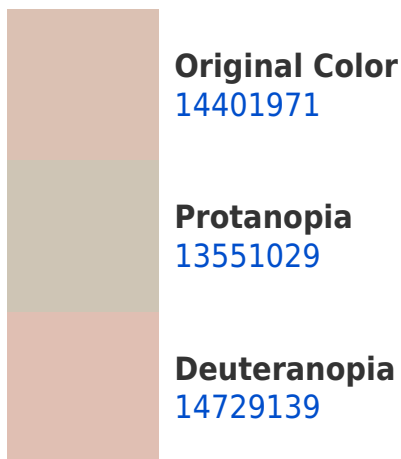



This preview shows how white text looks on a background with the Decimal color 14401971.

Color Blindness Simulation

Color vision deficiency is a very complex topic, and I could not describe the different causes any better than Wikipedia does, so if you want to learn more, you should check out their [article about color blindness](#).

Dichromacy





Tritanopia
14597580

Trichromacy



Original Color
14401971

Protanomaly
13878452

Deuteranomaly
14598323

Tritanomaly
14532291

Monochromacy



Original Color
14401971

Achromatopsia
13092807

Achromatomaly
13551040

CSS Examples

Text

The CSS property to change the color of the text to Decimal 14401971 is called "color". The color property can be set on classes, ids or directly on the HTML element.

This example shows how text in the color #DBC1B3 looks like.

```
.text, #text, p{  
  color:#DBC1B3  
}
```

If you want to add a text shadow in that color use the text-shadow property, you can generate a text shadow directly with our [CSS Text Shadow Generator](#).

Here you see how black text with a 4 pixel #DBC1B3 colored shadow looks like.

```
.shadow{ text-shadow: 4px 4px 2px #DBC1B3  
}
```

Border

The CSS property to change the border of an element to Decimal 14401971 is called "border". The border property can be set on classes, ids or directly on the HTML element.

This example shows the color as border, it can be applied via the CSS property "border" or "border-color".

```
.border, #border, table{ border:4px solid  
#DBC1B3 }
```

If only the border color should be changed use the property `border-color`.

```
.border{ border-color:#DBC1B3 }
```

If you want to add a box shadow in that color use:

Here you see how a box with a 4 pixel #DBC1B3 colored shadow looks like.

```
.boxshadow{ -moz-box-shadow:4px 4px 4px  
4px #DBC1B3; -webkit-box-shadow:4px 4px  
4px 4px #DBC1B3; box-shadow:4px 4px 4px  
4px #DBC1B3 }
```

Background

The CSS property to change the background color of an element to Decimal 14401971 is called "background". The background property can be set on classes, ids or directly on the HTML element.

```
.background, #background, body{  
background:#DBC1B3 }
```

If only the background color should be changed can be used:

```
.background{ background-color:#DBC1B3 }
```

This example shows the color as background, it is applied via the CSS property "background".

To optimize and compress your CSS code, you can use our [online CSS compressor and optimizer](#) based on csstidy. If you want to create a linear or radial gradient as background or border, check our [CSS Gradient Generator](#).

Hey! You found this booklet interesting? Support Converting Colors with the new Membership Option!

The pro membership hides all ads, plus gives you double the colors in the color bucket, and more awesome pro features!

[Learn more, Memberships starting at \\$2.50/m!](#)

**Follow me
on Twitter!**

@ConvertingColor