

Converting Colors

Decimal(14402241)

Have a look what the booklet for
Decimal(14402241) contains.

Decimal(14402241)	3
<i>Conversions</i>	4
<i>Details</i>	6
<i>Harmonies</i>	11
<i>Previews</i>	23
<i>Color Blindness Simulation</i>	26
<i>CSS Examples</i>	29

Color

Decimal(14402241)

Conversions

Conversions Part 1

Format	Color
Hex	DBC2C1
RGB	219, 194, 193
RGB Percent	86%, 76%, 76%
CMY	0.1412, 0.2392, 0.2431
CMYK	0.00, 0.11, 0.12, 0.14
HSL	2°, 27%, 81%
HSV	2°, 12%, 86%
XYZ	58.1308, 57.4939, 58.4857
YIQ	201.3610, 15.2210, 4.9890

Conversions

Conversions Part 2

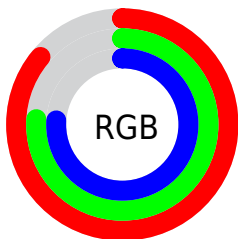
Format	Color
R _Y B	219, 194, 193
Decimal	14402241
CIE Lab	80.46, 8.66, 3.73
CIE LCh	80, 9.424, 23.297
Yxy	57.4939, 0.3339, 0.3302
Android (android.graphics.Color)	4292592321 (0xFFDBC2C1)
YUV	201.3610, -4.1220, 15.4694
Hunter-Lab	75.8247, 4.1533, 7.3453

Details

The Decimal color **14402241** is a light color, and the websafe version is hex **CCCCCC**. A complement of this color would be **12704475**, and the grayscale version is **13224393**.

A 20% lighter version of the original color is **16776185**, and **10783884** is the 20% darker color. If you saturate the color by 10%, you get **14396843**, and if you desaturate by 10%, it is **14407639**.

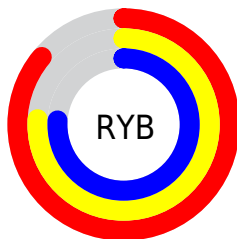
Distribution



Red (86%)

Green (76%)

Blue (76%)



Red (86%)

Yellow (76%)

Blue (76%)

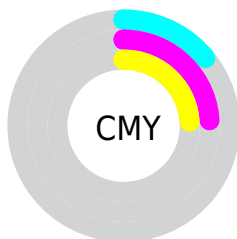


Cyan (0%)

Magenta (11%)

Yellow (12%)

Black (14%)



Cyan (14%)

Magenta (24%)

Yellow (24%)

Brightness & Saturation Gradients

These gradients show how the Decimal color 14402241 changes by changing the brightness by 10 percent. The first figure shows a shift by +10% for each color and the second figure -10%.

Similar to the brightness gradients but the following saturation gradients show a change of the Decimal color 14402241 by changing the saturation by 10% instead.

 14402241	 14402241
16777215	 12560294
 16776185	 10783884
	 9007986
	 7363162
	 5718850
	 4205868
	 2693144
	 1376256
	 0

 14402241

 14402241

 14396843

 14407639

 14391445

 14413037

 14386047

 14417919

 14380649

 14375252

 14369854

 14364456

 14359058

 14354432

Harmonies

Analogous

The Analogous color harmony consists of three colors that are next to each other on the color wheel.



14271178



14402241



14206138

Triad

The Triadic color harmony groups three colors that are evenly spaced from another and form a triangle on the color wheel.



14402241



12438717



12372441

Complementary

The Complementary color scheme is a pair of colors which are on the opposite of each other on the color wheel.



14402241



12704475

Split Complementary

Split-complementary colors differ from the complementary color scheme. The scheme consists of three colors, the original color and two neighbors of the complement color.



11914197



14402241



11914693

Square

The Square scheme is like the rectangle color scheme, but the four colors are evenly spaced on the color wheel.



14402241



13093303



11718094



13092568

Rectangle

The Rectangle color scheme consists of four colors that form a rectangle on the color wheel.



14402241



13944247



11718094



12176088

Sweetspot

The Sweet Spot groups the original color and five complimentary colors.



14402241



16774645



14402010



8419705



0



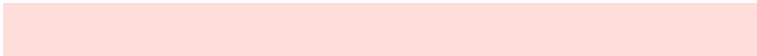
8421504

Same Dimension

The Same Dimension uses a secret algorithm to generate beautiful new colors.



14402241



16768475



14405569



7234403



11339520



3015168

Inverse Universe

The Inverse Universe completely reimagines the original color for something new.



12704475



14417663



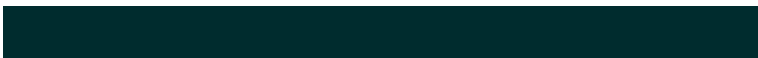
12701147



6516078



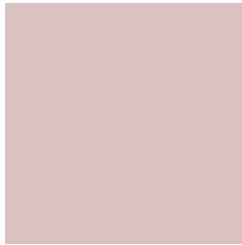
42925



11310

Previews

White Background



This preview shows how the Decimal color 14402241 looks on a white background.

Color Contrast Check

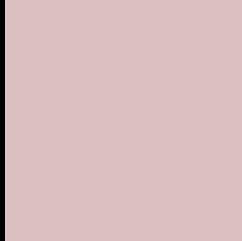
Large Text (above 18pt) WCAG AA × Fail

Any Text WCAG AA × Fail

Large Text (above 18pt) WCAG AAA × Fail

Any Text WCAG AAA × Fail

Black Background



This preview shows how the Decimal color 14402241 looks on a black background.

Color Contrast Check

Large Text (above 18pt) WCAG AA ✓ Pass

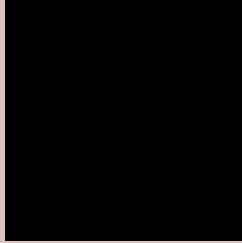
Any Text WCAG AA ✓ Pass

Large Text (above 18pt) WCAG AAA ✓ Pass

Any Text WCAG AAA ✓ Pass

If you want to check with other color combinations, try the [Color Contrast Checker](#).

Decimal 14402241 Background



This preview shows how black text looks on a background with the Decimal color 14402241.




This preview shows how white text looks on a background with the Decimal color 14402241.

Color Blindness Simulation

Color vision deficiency is a very complex topic, and I could not describe the different causes any better than Wikipedia does, so if you want to learn more, you should check out their [article about color blindness](#).

Dichromacy





Tritanopia
14532815

Trichromacy



Original Color
14402241

Protanomaly
13747651

Deuteranomaly
14467521

Tritanomaly
14467530

Monochromacy



Original Color
14402241

Achromatopsia
13224393

Achromatomaly
13682374

CSS Examples

Text

The CSS property to change the color of the text to Decimal 14402241 is called "color". The color property can be set on classes, ids or directly on the HTML element.

This example shows how text in the color #DBC2C1 looks like.

```
.text, #text, p{  
  color:#DBC2C1  
}
```

If you want to add a text shadow in that color use the text-shadow property, you can generate a text shadow directly with our [CSS Text Shadow Generator](#).

Here you see how black text with a 4 pixel #DBC2C1 colored shadow looks like.

```
.shadow{ text-shadow: 4px 4px 2px #DBC2C1
}
```

Border

The CSS property to change the border of an element to Decimal 14402241 is called "border". The border property can be set on classes, ids or directly on the HTML element.

This example shows the color as border, it can be applied via the CSS property "border" or "border-color".

```
.border, #border, table{ border:4px solid
#DBC2C1 }
```

If only the border color should be changed use the property `border-color`.

```
.border{ border-color:#DBC2C1 }
```

If you want to add a box shadow in that color use:

Here you see how a box with a 4 pixel #DBC2C1 colored shadow looks like.

```
.boxshadow{ -moz-box-shadow:4px 4px 4px  
4px #DBC2C1; -webkit-box-shadow:4px 4px  
4px 4px #DBC2C1; box-shadow:4px 4px 4px  
4px #DBC2C1 }
```

Background

The CSS property to change the background color of an element to Decimal 14402241 is called "background". The background property can be set on classes, ids or directly on the HTML element.

```
.background, #background, body{  
background:#DBC2C1 }
```

If only the background color should be changed can be used:

```
.background{ background-color:#DBC2C1 }
```

This example shows the color as background, it is applied via the CSS property "background".

To optimize and compress your CSS code, you can use our [online CSS compressor and optimizer](#) based on csstidy. If you want to create a linear or radial gradient as background or border, check our [CSS Gradient Generator](#).

Hey! You found this booklet interesting? Support Converting Colors with the new Membership Option!

The pro membership hides all ads, plus gives you double the colors in the color bucket, and more awesome pro features!

[Learn more, Memberships starting at \\$2.50/m!](#)

**Follow me
on Twitter!**

@ConvertingColor