

# Converting Colors

Decimal(14402507)

Have a look what the booklet for  
Decimal(14402507) contains.

<b>Decimal(14402507)</b> .....	3
<i><b>Conversions</b></i> .....	4
<i><b>Details</b></i> .....	6
<i><b>Harmonies</b></i> .....	11
<i><b>Previews</b></i> .....	23
<i><b>Color Blindness Simulation</b></i> .....	26
<i><b>CSS Examples</b></i> .....	29

# **Color**

**Decimal(14402507)**

# Conversions

## Conversions Part 1

<b>Format</b>	<b>Color</b>
Hex	DBC3CB
RGB	219, 195, 203
RGB Percent	86%, 76%, 80%
CMY	0.1412, 0.2353, 0.2039
CMYK	0.00, 0.11, 0.07, 0.14
HSL	340°, 25%, 81%
HSV	340°, 11%, 86%
XYZ	59.5080, 58.4021, 64.6362
YIQ	203.0880, 11.7360, 7.5760

# Conversions

## Conversions Part 2

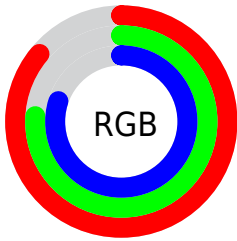
<b>Format</b>	<b>Color</b>
R <sub>Y</sub> B	219, 195, 203
Decimal	14402507
CIE Lab	80.96, 9.80, -0.91
CIE LCh	81, 9.846, 354.686
Yxy	58.4021, 0.3260, 0.3199
Android (android.graphics.Color)	4292592587 (0xFFDBC3CB)
YUV	203.0880, -0.0434, 13.9548
Hunter-Lab	76.4213, 5.2579, 3.3481

# Details

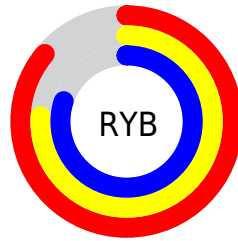
The Decimal color **14402507** is a light color, and the websafe version is hex **CCCCCC**. A complement of this color would be **12835795**, and the grayscale version is **13355979**.

A 20% lighter version of the original color is **16776447**, and **10784149** is the 20% darker color. If you saturate the color by 10%, you get **14396860**, and if you desaturate by 10%, it is **14408154**.

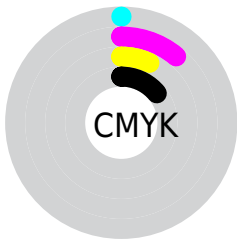
# Distribution



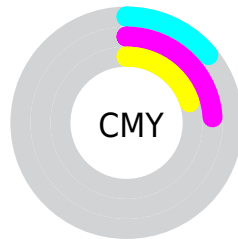
- Red (86%)
- Green (76%)
- Blue (80%)



- Red (86%)
- Yellow (76%)
- Blue (80%)



- Cyan (0%)
- Magenta (11%)
- Yellow (7%)
- Black (14%)



- Cyan (14%)
- Magenta (24%)
- Yellow (20%)

# Brightness & Saturation Gradients

These gradients show how the Decimal color 14402507 changes by changing the brightness by 10 percent. The first figure shows a shift by +10% for each color and the second figure -10%.

Similar to the brightness gradients but the following saturation gradients show a change of the Decimal color 14402507 by changing the saturation by 10% instead.



 14402507	 14402507
16777215	 12560560
 16776447	 10784149
	 9073787
	 7363426
	 5719115
	 4205876
	 2758687
	 1507334
	 0

 14402507

 14402507

 14396860

 14408154

 14391214

 14413800

 14385567

 14417911

 14379921

 14417919

 14374530

 14368883

 14363237

 14357590

 14352457

# Harmonies

## Analogous

The Analogous color harmony consists of three colors that are next to each other on the color wheel.



13944276



14402507



14533570

# Triad

The Triadic color harmony groups three colors that are evenly spaced from another and form a triangle on the color wheel.



14402507



13159352



11914712

# Complementary

The Complementary color scheme is a pair of colors which are on the opposite of each other on the color wheel.



14402507



12835795

# Split Complementary

Split-complementary colors differ from the complementary color scheme. The scheme consists of three colors, the original color and two neighbors of the complement color.



11718352



14402507



12504510

# Square

The Square scheme is like the rectangle color scheme, but the four colors are evenly spaced on the color wheel.



14402507



13879479



11980743



12503771

# Rectangle

The Rectangle color scheme consists of four colors that form a rectangle on the color wheel.



14402507



14468284



11980743



11849430



# Sweetspot

The Sweet Spot groups the original color and five complimentary colors.



14402507



16775162



13878235



8419964



0



8421504



# Same Dimension

The Same Dimension uses a secret algorithm to generate beautiful new colors.



14402507



16768745



14403523



7234406



11337786



3014671



# Inverse Universe

The Inverse Universe completely reimagines the original color for something new.



14402507



16768745



12834779



7234406



11337786

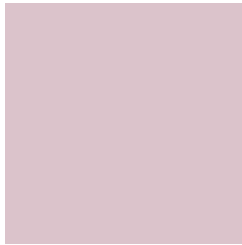


3014671



# Previews

## White Background



This preview shows how the Decimal color 14402507 looks on a white background.

## Color Contrast Check

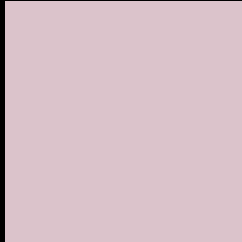
Large Text (above 18pt) WCAG AA × Fail

Any Text WCAG AA × Fail

Large Text (above 18pt) WCAG AAA × Fail

Any Text WCAG AAA × Fail

# Black Background



This preview shows how the Decimal color 14402507 looks on a black background.

## Color Contrast Check

Large Text (above 18pt) WCAG AA ✓ Pass

Any Text WCAG AA ✓ Pass

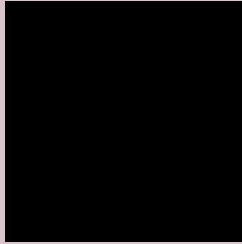
Large Text (above 18pt) WCAG AAA ✓ Pass

Any Text WCAG AAA ✓ Pass

If you want to check with other color combinations, try the [Color Contrast Checker](#).



## Decimal 14402507 Background



This preview shows how black text looks on a background with the Decimal color 14402507.




This preview shows how white text looks on a background with the Decimal color 14402507.

# Color Blindness Simulation

Color vision deficiency is a very complex topic, and I could not describe the different causes any better than Wikipedia does, so if you want to learn more, you should check out their [article about color blindness](#).

## Dichromacy





**Tritanopia**  
14467793

# Trichromacy



**Original Color**  
14402507

**Protanomaly**  
13747917

**Deuteranomaly**  
14468043

**Tritanomaly**  
14467791

# Monochromacy



**Original Color**  
14402507

**Achromatopsia**  
13355979

**Achromatomaly**  
13748427

# CSS Examples

## Text

The CSS property to change the color of the text to Decimal 14402507 is called "color". The color property can be set on classes, ids or directly on the HTML element.

This example shows how text in the color #DBC3CB looks like.

```
.text, #text, p{  
    color:#DBC3CB  
}
```

If you want to add a text shadow in that color use the text-shadow property, you can generate a text shadow directly with our [CSS Text Shadow Generator](#).

Here you see how black text with a 4 pixel #DBC3CB colored shadow looks like.

```
.shadow{ text-shadow: 4px 4px 2px #DBC3CB
}
```

## Border

The CSS property to change the border of an element to Decimal 14402507 is called "border". The border property can be set on classes, ids or directly on the HTML element.

This example shows the color as border, it can be applied via the CSS property "border" or "border-color".

```
.border, #border, table{ border:4px solid
#DBC3CB }
```

If only the border color should be changed use the property `border-color`.

```
.border{ border-color:#DBC3CB }
```

If you want to add a box shadow in that color use:

Here you see how a box with a 4 pixel #DBC3CB colored shadow looks like.

```
.boxshadow{ -moz-box-shadow:4px 4px 4px  
4px #DBC3CB; -webkit-box-shadow:4px 4px  
4px 4px #DBC3CB; box-shadow:4px 4px 4px  
4px #DBC3CB }
```

# Background

The CSS property to change the background color of an element to Decimal 14402507 is called "background". The background property can be set on classes, ids or directly on the HTML element.

```
.background, #background, body{  
background:#DBC3CB }
```

If only the background color should be changed can be used:

```
.background{ background-color:#DBC3CB }
```

This example shows the color as background, it is applied via the CSS property "background".

To optimize and compress your CSS code, you can use our [online CSS compressor and optimizer](#) based on csstidy. If you want to create a linear or radial gradient as background or border, check our [CSS Gradient Generator](#).



Hey! You found this booklet interesting? Support Converting Colors with the new Membership Option!

The pro membership hides all ads, plus gives you double the colors in the color bucket, and more awesome pro features!

**[Learn more, Memberships starting at \\$2.50/m!](#)**

**Follow me  
on Twitter!**

@ConvertingColor