

# Converting Colors

Decimal(14403784)

Have a look what the booklet for  
Decimal(14403784) contains.

<b>Decimal(14403784)</b> .....	3
<i><b>Conversions</b></i> .....	4
<i><b>Details</b></i> .....	6
<i><b>Harmonies</b></i> .....	11
<i><b>Previews</b></i> .....	23
<i><b>Color Blindness Simulation</b></i> .....	26
<i><b>CSS Examples</b></i> .....	29

# **Color**

**Decimal(14403784)**

# Conversions

## Conversions Part 1

Format	Color
Hex	DBC8C8
RGB	219, 200, 200
RGB Percent	86%, 78%, 78%
CMY	0.1412, 0.2157, 0.2157
CMYK	0.00, 0.09, 0.09, 0.14
HSL	0°, 21%, 82%
HSV	0°, 9%, 86%
XYZ	60.2930, 60.5388, 63.1509
YIQ	205.6810, 11.3240, 4.0280

# Conversions

## Conversions Part 2

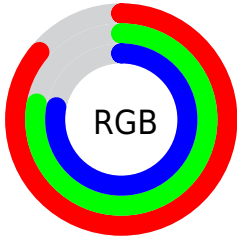
Format	Color
R <sub>Y</sub> B	219, 200, 200
Decimal	14403784
CIE Lab	82.13, 6.64, 2.40
CIE LCh	82, 7.061, 19.871
Yxy	60.5388, 0.3277, 0.3290
Android (android.graphics.Color)	4292593864 (0xFFDBC8C8)
YUV	205.6810, -2.8007, 11.6808
Hunter-Lab	77.8067, 2.1595, 6.3426

# Details

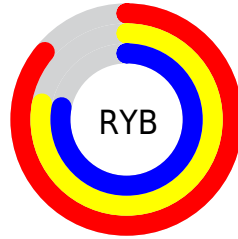
The Decimal color **14403784** is a light color, and the websafe version is hex **CCCCCC**. A complement of this color would be **13163483**, and the grayscale version is **13553358**.

A 20% lighter version of the original color is **16777215**, and **10785426** is the 20% darker color. If you saturate the color by 10%, you get **14398130**, and if you desaturate by 10%, it is **14409438**.

# Distribution



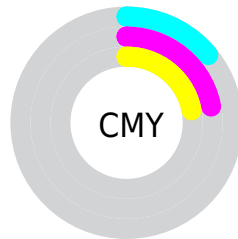
- Red (86%)
- Green (78%)
- Blue (78%)



- Red (86%)
- Yellow (78%)
- Blue (78%)



- Cyan (0%)
- Magenta (9%)
- Yellow (9%)
- Black (14%)



- Cyan (14%)
- Magenta (22%)
- Yellow (22%)

# Brightness & Saturation Gradients

These gradients show how the Decimal color 14403784 changes by changing the brightness by 10 percent. The first figure shows a shift by +10% for each color and the second figure -10%.

Similar to the brightness gradients but the following saturation gradients show a change of the Decimal color 14403784 by changing the saturation by 10% instead.



■ 14403784

16777215

■ 14403784

■ 12561837

■ 10785426

■ 9074808

■ 7364704

■ 5785672

■ 4206898

■ 2759709

■ 1507842

■ 0

 14403784

 14403784

 14398130

 14409438

 14392476

 14415092

 14386822

 14417919

 14381168

 14375514

 14370117

 14364463

 14358809

 14353155

# Harmonies

## Analogous

The Analogous color harmony consists of three colors that are next to each other on the color wheel.



14272719



14403784



14272962

# Triad

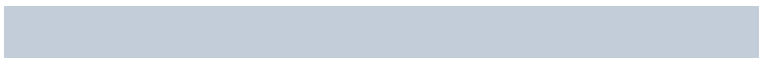
The Triadic color harmony groups three colors that are evenly spaced from another and form a triangle on the color wheel.



14403784



12963780



12832217

# Complementary

The Complementary color scheme is a pair of colors which are on the opposite of each other on the color wheel.



14403784



13163483

# Split Complementary

Split-complementary colors differ from the complementary color scheme. The scheme consists of three colors, the original color and two neighbors of the complement color.



12505046



14403784



12570826

# Square

The Square scheme is like the rectangle color scheme, but the four colors are evenly spaced on the color wheel.



14403784



13487552



12374224



13355993

# Rectangle

The Rectangle color scheme consists of four colors that form a rectangle on the color wheel.



14403784



14076608



12374224



12701400



# Sweetspot

The Sweet Spot groups the original color and five complimentary colors.



14403784



16775159



14403803



8419962



0



8421504



# Same Dimension

The Same Dimension uses a secret algorithm to generate beautiful new colors.



14403784



16770790



14406344



7234403



11337728



3014656



# Inverse Universe

The Inverse Universe completely reimagines the original color for something new.



13163483



15138815



13161179



6516334



44461

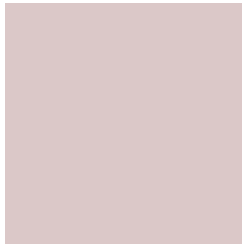


11822



# Previews

## White Background



This preview shows how the Decimal color 14403784 looks on a white background.

## Color Contrast Check

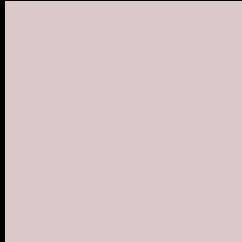
Large Text (above 18pt) WCAG AA × Fail

Any Text WCAG AA × Fail

Large Text (above 18pt) WCAG AAA × Fail

Any Text WCAG AAA × Fail

# Black Background



This preview shows how the Decimal color 14403784 looks on a black background.

## Color Contrast Check

Large Text (above 18pt) WCAG AA ✓ Pass

Any Text WCAG AA ✓ Pass

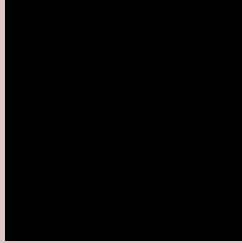
Large Text (above 18pt) WCAG AAA ✓ Pass

Any Text WCAG AAA ✓ Pass

If you want to check with other color combinations, try the [Color Contrast Checker](#).



## Decimal 14403784 Background



This preview shows how black text looks on a background with the Decimal color 14403784.




This preview shows how white text looks on a background with the Decimal color 14403784.

# Color Blindness Simulation

Color vision deficiency is a very complex topic, and I could not describe the different causes any better than Wikipedia does, so if you want to learn more, you should check out their [article about color blindness](#).

## Dichromacy





**Tritanopia**  
14534357

# Trichromacy



**Original Color**  
14403784

**Protanomaly**  
13945545

**Deuteranomaly**  
14665672

**Tritanomaly**  
14469072

# Monochromacy



**Original Color**  
14403784

**Achromatopsia**  
13553358

**Achromatomaly**  
13880524

# CSS Examples

## Text

The CSS property to change the color of the text to Decimal 14403784 is called "color". The color property can be set on classes, ids or directly on the HTML element.

This example shows how text in the color #DBC8C8 looks like.

```
.text, #text, p{  
    color:#DBC8C8  
}
```

If you want to add a text shadow in that color use the text-shadow property, you can generate a text shadow directly with our [CSS Text Shadow Generator](#).

Here you see how black text with a 4 pixel #DBC8C8 colored shadow looks like.

```
.shadow{ text-shadow: 4px 4px 2px #DBC8C8
}
```

## Border

The CSS property to change the border of an element to Decimal 14403784 is called "border". The border property can be set on classes, ids or directly on the HTML element.

This example shows the color as border, it can be applied via the CSS property "border" or "border-color".

```
.border, #border, table{ border:4px solid
#DBC8C8 }
```

If only the border color should be changed use the property `border-color`.

```
.border{ border-color:#DBC8C8 }
```

If you want to add a box shadow in that color use:

Here you see how a box with a 4 pixel #DBC8C8 colored shadow looks like.

```
.boxshadow{ -moz-box-shadow:4px 4px 4px  
4px #DBC8C8; -webkit-box-shadow:4px 4px  
4px 4px #DBC8C8; box-shadow:4px 4px 4px  
4px #DBC8C8 }
```

# Background

The CSS property to change the background color of an element to Decimal 14403784 is called "background". The background property can be set on classes, ids or directly on the HTML element.

```
.background, #background, body{  
background:#DBC8C8 }
```

If only the background color should be changed can be used:

```
.background{ background-color:#DBC8C8 }
```

This example shows the color as background, it is applied via the CSS property "background".

To optimize and compress your CSS code, you can use our [online CSS compressor and optimizer](#) based on csstidy. If you want to create a linear or radial gradient as background or border, check our [CSS Gradient Generator](#).



Hey! You found this booklet interesting? Support Converting Colors with the new Membership Option!

The pro membership hides all ads, plus gives you double the colors in the color bucket, and more awesome pro features!

**[Learn more, Memberships starting at \\$2.50/m!](#)**

**Follow me  
on Twitter!**

@ConvertingColor