

# Converting Colors

Decimal(14404030)

Have a look what the booklet for  
Decimal(14404030) contains.

|  |    |
|--|----|
| <b>Decimal(14404030)</b> .....                 | 3  |
| <i><b>Conversions</b></i> .....                | 4  |
| <i><b>Details</b></i> .....                    | 6  |
| <i><b>Harmonies</b></i> .....                  | 11 |
| <i><b>Previews</b></i> .....                   | 23 |
| <i><b>Color Blindness Simulation</b></i> ..... | 26 |
| <i><b>CSS Examples</b></i> .....               | 29 |

# **Color**

**Decimal(14404030)**

# Conversions

## Conversions Part 1

| Format      | Color                     |
|-------------|---------------------------|
| Hex         | DBC9BE                    |
| RGB         | 219, 201, 190             |
| RGB Percent | 86%, 79%, 75%             |
| CMY         | 0.1412, 0.2118, 0.2549    |
| CMYK        | 0.00, 0.08, 0.13, 0.14    |
| HSL         | 23°, 29%, 80%             |
| HSV         | 23°, 13%, 86%             |
| XYZ         | 59.3943, 60.5511, 57.2723 |
| YIQ         | 205.1280, 14.2590, 0.3950 |

# Conversions

## Conversions Part 2

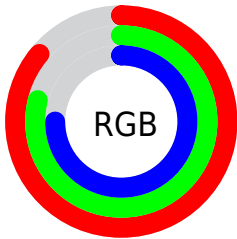
| Format                              | Color  |
|-------------------------------------|--|
| <a href="#">RYB</a>                 | <a href="#">219, 208, 190</a>                  |
| Decimal                             | <a href="#">14404030</a>                       |
| CIELab                              | <a href="#">82.14, 4.47, 7.76</a>              |
| CIELCh                              | <a href="#">82, 8.950, 60.065</a>              |
| Yxy                                 | <a href="#">60.5511, 0.3351,<br/>0.3417</a>    |
| Android<br>(android.graphics.Color) | <a href="#">4292594110<br/>(0xFFDBC9BE)</a>    |
| YUV                                 | <a href="#">205.1280, -7.4581,<br/>12.1657</a> |
| Hunter-Lab                          | <a href="#">77.8146, 0.0701,<br/>10.8322</a>   |

# Details

The Decimal color **14404030** is a light color, and the websafe version is hex **CCCCCC**. A complement of this color would be **12505307**, and the grayscale version is **13487565**.

A 20% lighter version of the original color is **16777206**, and **10785673** is the 20% darker color. If you saturate the color by 10%, you get **14400424**, and if you desaturate by 10%, it is **14407636**.

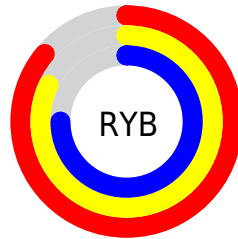
# Distribution



Red (86%)

Green (79%)

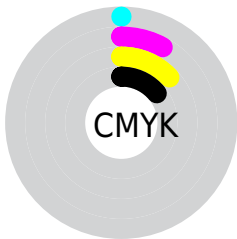
Blue (75%)



Red (86%)

Yellow (82%)

Blue (75%)

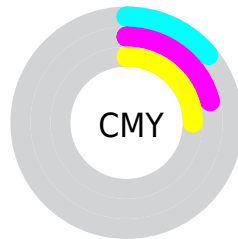


Cyan (0%)

Magenta (8%)

Yellow (13%)

Black (14%)



Cyan (14%)

Magenta (21%)

Yellow (25%)

# Brightness & Saturation Gradients

These gradients show how the Decimal color 14404030 changes by changing the brightness by 10 percent. The first figure shows a shift by +10% for each color and the second figure -10%.

Similar to the brightness gradients but the following saturation gradients show a change of the Decimal color 14404030 by changing the saturation by 10% instead.



 14404030

 14404030

16777215

 12562083

 16777206

 10785673

 9009519

 7364951

 5720384

 4207146

 2694421

 1311744

 0

 14404030

 14404030

 14400424

 14407636

 14397074

 14410986

 14393468

 14414591

 14390118

 14417919

 14386513

 14382907

 14379557

 14375951

 14373632

# Harmonies

## Analogous

The Analogous color harmony consists of three colors that are next to each other on the color wheel.



14665668



14404030



13880508

# Triad

The Triadic color harmony groups three colors that are evenly spaced from another and form a triangle on the color wheel.



14404030



12243404



13552347

# Complementary

The Complementary color scheme is a pair of colors which are on the opposite of each other on the color wheel.



14404030



12505307

# Split Complementary

Split-complementary colors differ from the complementary color scheme. The scheme consists of three colors, the original color and two neighbors of the complement color.



12897757



14404030



12112340

# Square

The Square scheme is like the rectangle color scheme, but the four colors are evenly spaced on the color wheel.



14404030



12636356



12308442



14207189

# Rectangle

The Rectangle color scheme consists of four colors that form a rectangle on the color wheel.



14404030



13487549



12308442



13355996



# Sweetspot

The Sweet Spot groups the original color and five complimentary colors.



14404030



16775669



14401232



8420473



0



8421504

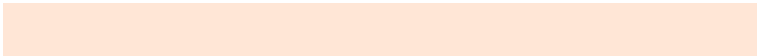


# Same Dimension

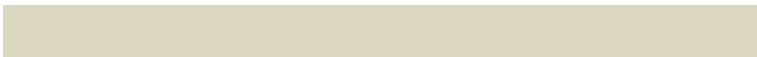
The Same Dimension uses a secret algorithm to generate beautiful new colors.



14404030



16770774



14407614



7235427



11354624



3019008

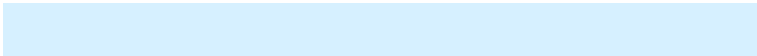


# Inverse Universe

The Inverse Universe completely reimagines the original color for something new.



12505307



14086399



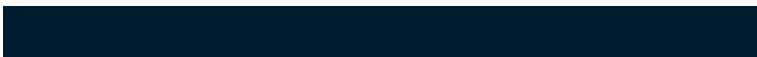
12501723



6515054



27821

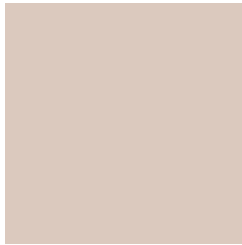


7214



# Previews

## White Background



This preview shows how the Decimal color 14404030 looks on a white background.

## Color Contrast Check

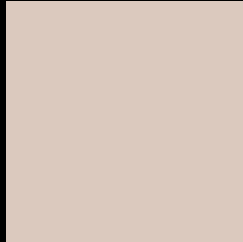
Large Text (above 18pt) WCAG AA × Fail

Any Text WCAG AA × Fail

Large Text (above 18pt) WCAG AAA × Fail

Any Text WCAG AAA × Fail

# Black Background



This preview shows how the Decimal color 14404030 looks on a black background.

## Color Contrast Check

Large Text (above 18pt) WCAG AA ✓ Pass

Any Text WCAG AA ✓ Pass

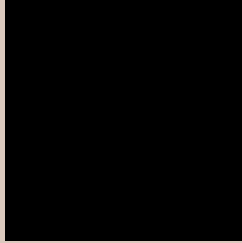
Large Text (above 18pt) WCAG AAA ✓ Pass

Any Text WCAG AAA ✓ Pass

If you want to check with other color combinations, try the [Color Contrast Checker](#).



## Decimal 14404030 Background



This preview shows how black text looks on a background with the Decimal color 14404030.




This preview shows how white text looks on a background with the Decimal color 14404030.

# Color Blindness Simulation

Color vision deficiency is a very complex topic, and I could not describe the different causes any better than Wikipedia does, so if you want to learn more, you should check out their [article about color blindness](#).

## Dichromacy





**Tritanopia**  
14599893

# Trichromacy



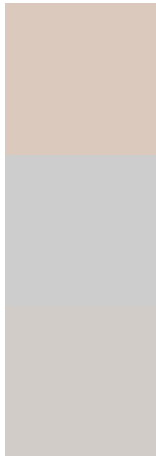
**Original Color**  
14404030

**Protanomaly**  
14076863

**Deuteranomaly**  
14796479

**Tritanomaly**  
14534605

# Monochromacy



**Original Color**  
14404030

**Achromatopsia**  
13487565

**Achromatomaly**  
13814984

# CSS Examples

## Text

The CSS property to change the color of the text to Decimal 14404030 is called "color". The color property can be set on classes, ids or directly on the HTML element.

This example shows how text in the color #DBC9BE looks like.

```
.text, #text, p{  
    color:#DBC9BE  
}
```

If you want to add a text shadow in that color use the text-shadow property, you can generate a text shadow directly with our [CSS Text Shadow Generator](#).

Here you see how black text with a 4 pixel #DBC9BE colored shadow looks like.

```
.shadow{ text-shadow: 4px 4px 2px #DBC9BE
}
```

## Border

The CSS property to change the border of an element to Decimal 14404030 is called "border". The border property can be set on classes, ids or directly on the HTML element.

This example shows the color as border, it can be applied via the CSS property "border" or "border-color".

```
.border, #border, table{ border:4px solid
#DBC9BE }
```

If only the border color should be changed use the property `border-color`.

```
.border{ border-color:#DBC9BE }
```

If you want to add a box shadow in that color use:

Here you see how a box with a 4 pixel #DBC9BE colored shadow looks like.

```
.boxshadow{ -moz-box-shadow:4px 4px 4px  
4px #DBC9BE; -webkit-box-shadow:4px 4px  
4px 4px #DBC9BE; box-shadow:4px 4px 4px  
4px #DBC9BE }
```

# Background

The CSS property to change the background color of an element to Decimal 14404030 is called "background". The background property can be set on classes, ids or directly on the HTML element.

```
.background, #background, body{  
background:#DBC9BE }
```

If only the background color should be changed can be used:

```
.background{ background-color:#DBC9BE }
```

This example shows the color as background, it is applied via the CSS property "background".

To optimize and compress your CSS code, you can use our [online CSS compressor and optimizer](#) based on csstidy. If you want to create a linear or radial gradient as background or border, check our [CSS Gradient Generator](#).



Hey! You found this booklet interesting? Support Converting Colors with the new Membership Option!

The pro membership hides all ads, plus gives you double the colors in the color bucket, and more awesome pro features!

**[Learn more, Memberships starting at \\$2.50/m!](#)**

**Follow me  
on Twitter!**

@ConvertingColor