

Converting Colors

Decimal(14436741)

Have a look what the booklet for
Decimal(14436741) contains.

Decimal(14436741)	3
<i>Conversions</i>	4
<i>Details</i>	6
<i>Harmonies</i>	11
<i>Previews</i>	23
<i>Color Blindness Simulation</i>	26
<i>CSS Examples</i>	29

Color

Decimal(14436741)

Conversions

Conversions Part 1

Format	Color
Hex	DC4985
RGB	220, 73, 133
RGB Percent	86%, 29%, 52%
CMY	0.1373, 0.7137, 0.4784
CMYK	0.00, 0.67, 0.40, 0.14
HSL	336°, 68%, 57%
HSV	336°, 67%, 86%
XYZ	36.1314, 21.6742, 24.4695
YIQ	123.7930, 68.3520, 49.8240

Conversions

Conversions Part 2

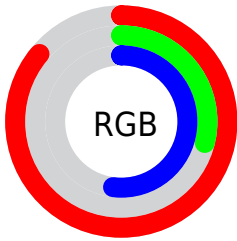
Format	Color
R_{YB}	220, 73, 133
Decimal	14436741
CIE _{Lab}	53.68, 61.86, -1.46
CIE _{LCh}	54, 61.877, 358.649
Yxy	21.6742, 0.4392, 0.2634
Android (android.graphics.Color)	4292626821 (0xFFDC4985)
YUV	123.7930, 4.5391, 84.3735
Hunter-Lab	46.5555, 57.0602, 1.4262

Details

The Decimal color **14436741** is a dark color, and the websafe version is hex **CC3366**. The color can be described as middle muted rose. A complement of this color would be **4840608**, and the grayscale version is **8158332**.

A 20% lighter version of the original color is **16745146**, and **10485844** is the 20% darker color. If you saturate the color by 10%, you get **14431096**, and if you desaturate by 10%, it is **14442386**.

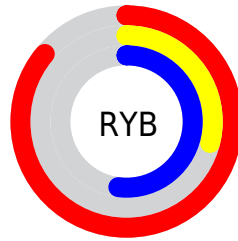
Distribution



Red (86%)

Green (29%)

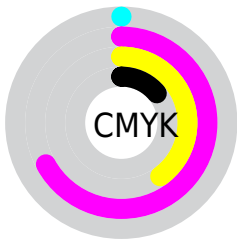
Blue (52%)



Red (86%)

Yellow (29%)

Blue (52%)

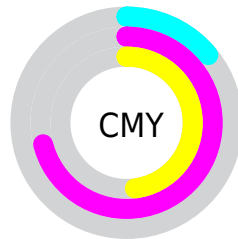


Cyan (0%)

Magenta (67%)

Yellow (40%)

Black (14%)



Cyan (14%)

Magenta (71%)

Yellow (48%)

Brightness & Saturation Gradients

These gradients show how the Decimal color 14436741 changes by changing the brightness by 10 percent. The first figure shows a shift by +10% for each color and the second figure -10%.

Similar to the brightness gradients but the following saturation gradients show a change of the Decimal color 14436741 by changing the saturation by 10% instead.

 14436741

 14436741

16777215

 12462444

 16745146

 10485844

 16752598

 8585277

 16759794

 6684711

 16767231

 4849682

 16774911

 3014658

 0

 14436741

 14436741

 14431096

 14442386

 14425451

 14448031

 14419806

 14453676

 14418010

 14459321

 14464966

 14470611

 14476256

 14481901

 14483450

Harmonies

Analogous

The Analogous color harmony consists of three colors that are next to each other on the color wheel.



12475065



14436741



14438736

Triad

The Triadic color harmony groups three colors that are evenly spaced from another and form a triangle on the color wheel.



14436741



6786064



37851

Complementary

The Complementary color scheme is a pair of colors which are on the opposite of each other on the color wheel.



14436741



4840608

Split Complementary

Split-complementary colors differ from the complementary color scheme. The scheme consists of three colors, the original color and two neighbors of the complement color.



39090



14436741



38213

Square

The Square scheme is like the rectangle color scheme, but the four colors are evenly spaced on the color wheel.



14436741



10255616



39036



34795

Rectangle

The Rectangle color scheme consists of four colors that form a rectangle on the color wheel.



14436741



13525041



39036



38608

Sweetspot

The Sweet Spot groups the original color and five complimentary colors.



14436741



16764129



10439132



8413549



0



8421504

Same Dimension

The Same Dimension uses a secret algorithm to generate beautiful new colors.



14436741



16724870



14439753



7234407



11337799



3014675

Inverse Universe

The Inverse Universe completely reimagines the original color for something new.



14436741



16724870



4837596



7234407



11337799



3014675

Previews

White Background



This preview shows how the Decimal color 14436741 looks on a white background.

Color Contrast Check

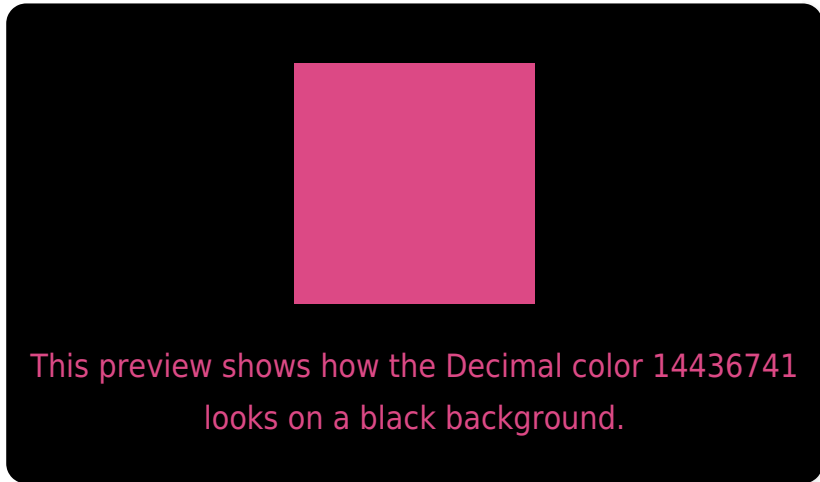
Large Text (above 18pt) WCAG AA ✓ Pass

Any Text WCAG AA ✗ Fail

Large Text (above 18pt) WCAG AAA ✗ Fail

Any Text WCAG AAA ✗ Fail

Black Background



Color Contrast Check

Large Text (above 18pt) WCAG AA ✓ Pass

Any Text WCAG AA ✓ Pass

Large Text (above 18pt) WCAG AAA ✓ Pass

Any Text WCAG AAA × Fail

If you want to check with other color combinations, try the [Color Contrast Checker](#).

Decimal 14436741 Background



This preview shows how black text looks on a background with the Decimal color 14436741.



This preview shows how white text looks on a background with the Decimal color 14436741.

Color Blindness Simulation

Color vision deficiency is a very complex topic, and I could not describe the different causes any better than Wikipedia does, so if you want to learn more, you should check out their [article about color blindness](#).

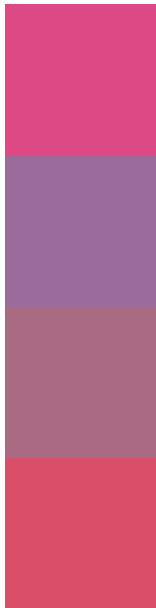
Dichromacy





Tritanopia
14242648

Trichromacy



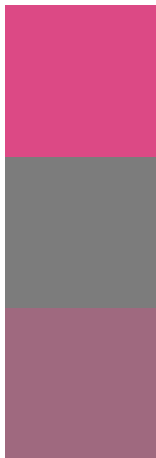
Original Color
14436741

Protanomaly
10185627

Deuteranomaly
11168385

Tritanomaly
14307176

Monochromacy



Original Color
14436741

Achromatopsia
8158332

Achromatomaly
10447231

CSS Examples

Text

The CSS property to change the color of the text to Decimal 14436741 is called "color". The color property can be set on classes, ids or directly on the HTML element.

This example shows how text in the color #DC4985 looks like.

```
.text, #text, p{  
    color:#DC4985  
}
```

If you want to add a text shadow in that color use the text-shadow property, you can generate a text shadow directly with our [CSS Text Shadow Generator](#).

Here you see how black text with a 4 pixel #DC4985 colored shadow looks like.

```
.shadow{ text-shadow: 4px 4px 2px #DC4985
}
```

Border

The CSS property to change the border of an element to Decimal 14436741 is called "border". The border property can be set on classes, ids or directly on the HTML element.

This example shows the color as border, it can be applied via the CSS property "border" or "border-color".

```
.border, #border, table{ border:4px solid
#DC4985 }
```

If only the border color should be changed use the property `border-color`.

```
.border{ border-color:#DC4985 }
```

If you want to add a box shadow in that color use:

Here you see how a box with a 4 pixel #DC4985 colored shadow looks like.

```
.boxshadow{ -moz-box-shadow:4px 4px 4px  
4px #DC4985; -webkit-box-shadow:4px 4px  
4px 4px #DC4985; box-shadow:4px 4px 4px  
4px #DC4985 }
```

Background

The CSS property to change the background color of an element to Decimal 14436741 is called "background". The background property can be set on classes, ids or directly on the HTML element.

```
.background, #background, body{  
background:#DC4985 }
```

If only the background color should be changed can be used:

```
.background{ background-color:#DC4985 }
```

This example shows the color as background, it is applied via the CSS property "background".

To optimize and compress your CSS code, you can use our [online CSS compressor and optimizer](#) based on csstidy. If you want to create a linear or radial gradient as background or border, check our [CSS Gradient Generator](#).

Hey! You found this booklet interesting? Support Converting Colors with the new Membership Option!

The pro membership hides all ads, plus gives you double the colors in the color bucket, and more awesome pro features!

[Learn more, Memberships starting at \\$2.50/m!](#)

**Follow me
on Twitter!**

@ConvertingColor