

Converting Colors

Decimal(14438510)

Have a look what the booklet for
Decimal(14438510) contains.

Decimal(14438510)	3
<i>Conversions</i>	4
<i>Details</i>	6
<i>Harmonies</i>	11
<i>Previews</i>	23
<i>Color Blindness Simulation</i>	26
<i>CSS Examples</i>	29

Color

Decimal(14438510)

Conversions

Conversions Part 1

Format	Color
Hex	DC506E
RGB	220, 80, 110
RGB Percent	86%, 31%, 43%
CMY	0.1373, 0.6863, 0.5686
CMYK	0.00, 0.64, 0.50, 0.14
HSL	347°, 67%, 59%
HSV	347°, 64%, 86%
XYZ	35.1983, 22.0788, 17.1583
YIQ	125.2800, 73.8100, 39.0100

Conversions

Conversions Part 2

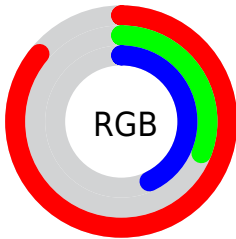
Format	Color
R _Y B	220, 80, 110
Decimal	14438510
CIE Lab	54.11, 56.86, 12.85
CIE LCh	54, 58.292, 12.737
Yxy	22.0788, 0.4729, 0.2966
Android (android.graphics.Color)	4292628590 (0xFFDC506E)
YUV	125.2800, -7.5330, 83.0694
Hunter-Lab	46.9880, 51.4838, 11.2411

Details

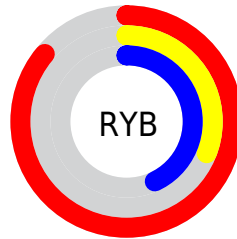
The Decimal color **14438510** is a dark color, and the websafe version is hex **CC3366**. The color can be described as middle muted rose. A complement of this color would be **5299390**, and the grayscale version is **8224125**.

A 20% lighter version of the original color is **16746657**, and **10488895** is the 20% darker color. If you saturate the color by 10%, you get **14432861**, and if you desaturate by 10%, it is **14444159**.

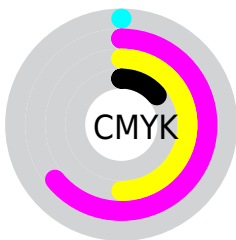
Distribution



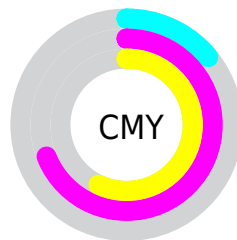
- Red (86%)
- Green (31%)
- Blue (43%)



- Red (86%)
- Yellow (31%)
- Blue (43%)



- Cyan (0%)
- Magenta (64%)
- Yellow (50%)
- Black (14%)



- Cyan (14%)
- Magenta (69%)
- Yellow (57%)

Brightness & Saturation Gradients

These gradients show how the Decimal color 14438510 changes by changing the brightness by 10 percent. The first figure shows a shift by +10% for each color and the second figure -10%.

Similar to the brightness gradients but the following saturation gradients show a change of the Decimal color 14438510 by changing the saturation by 10% instead.

 14438510

 14438510

16777215

 12464982

 16746657

 10488895

 16753852

 8519721

 16761048

 6619157

 16768500

 4784129

 16776191

 2883585

 0

 14438510

 14438510

 14432861

 14444159

 14427211

 14449809

 14421562

 14455458

 14417967

 14461107

 14466756

 14472406

 14478055

 14483448

 14483455

Harmonies

Analogous

The Analogous color harmony consists of three colors that are next to each other on the color wheel.



13456800



14438510



13721407

Triad

The Triadic color harmony groups three colors that are evenly spaced from another and form a triangle on the color wheel.



14438510



5083441



36833

Complementary

The Complementary color scheme is a pair of colors which are on the opposite of each other on the color wheel.



14438510



5299390

Split Complementary

Split-complementary colors differ from the complementary color scheme. The scheme consists of three colors, the original color and two neighbors of the complement color.



38853



14438510



38754

Square

The Square scheme is like the rectangle color scheme, but the four colors are evenly spaced on the color wheel.



14438510



8816138



39318



4161764

Rectangle

The Rectangle color scheme consists of four colors that form a rectangle on the color wheel.



14438510



12479780



39318



37595

Sweetspot

The Sweet Spot groups the original color and five complimentary colors.



14438510



16764889



12472540



8413800



0



8421504

Same Dimension

The Same Dimension uses a secret algorithm to generate beautiful new colors.



14438510



16727399



14448720



7234405



11337765



3014666

Inverse Universe

The Inverse Universe completely reimagines the original color for something new.



14438510



16727399



5289180



7234405



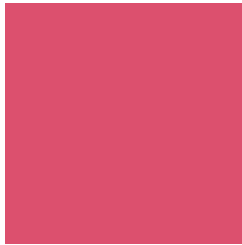
11337765



3014666

Previews

White Background



This preview shows how the Decimal color 14438510 looks on a white background.

Color Contrast Check

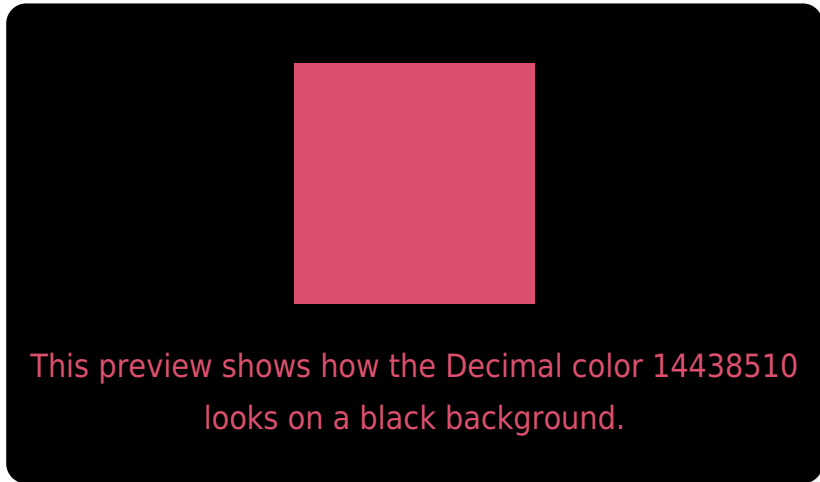
Large Text (above 18pt) WCAG AA ✓ Pass

Any Text WCAG AA × Fail

Large Text (above 18pt) WCAG AAA × Fail

Any Text WCAG AAA × Fail

Black Background



Color Contrast Check

Large Text (above 18pt) WCAG AA ✓ Pass

Any Text WCAG AA ✓ Pass

Large Text (above 18pt) WCAG AAA ✓ Pass

Any Text WCAG AAA × Fail

If you want to check with other color combinations, try the [Color Contrast Checker](#).

Decimal 14438510 Background



This preview shows how black text looks on a background with the Decimal color 14438510.

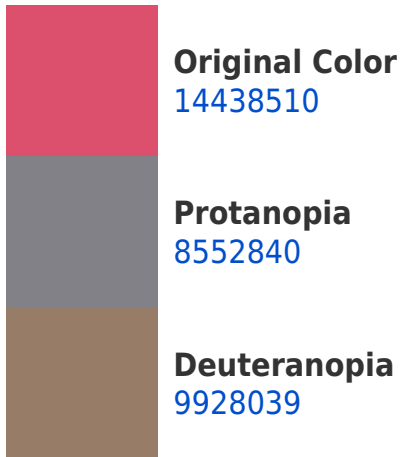


This preview shows how white text looks on a background with the Decimal color 14438510.

Color Blindness Simulation

Color vision deficiency is a very complex topic, and I could not describe the different causes any better than Wikipedia does, so if you want to learn more, you should check out their [article about color blindness](#).

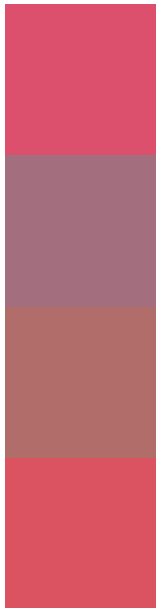
Dichromacy





Tritanopia
14373977

Trichromacy



Original Color
14438510

Protanomaly
10710911

Deuteranomaly
11562346

Tritanomaly
14373729

Monochromacy



Original Color
14438510

Achromatopsia
8224125

Achromatomaly
10513784

CSS Examples

Text

The CSS property to change the color of the text to Decimal 14438510 is called "color". The color property can be set on classes, ids or directly on the HTML element.

This example shows how text in the color #DC506E looks like.

```
.text, #text, p{  
    color:#DC506E  
}
```

If you want to add a text shadow in that color use the text-shadow property, you can generate a text shadow directly with our [CSS Text Shadow Generator](#).

Here you see how black text with a 4 pixel #DC506E colored shadow looks like.

```
.shadow{ text-shadow: 4px 4px 2px #DC506E
}
```

Border

The CSS property to change the border of an element to Decimal 14438510 is called "border". The border property can be set on classes, ids or directly on the HTML element.

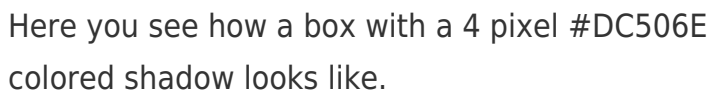
This example shows the color as border, it can be applied via the CSS property "border" or "border-color".

```
.border, #border, table{ border:4px solid
#DC506E }
```

If only the border color should be changed use the property `border-color`.

```
.border{ border-color:#DC506E }
```

If you want to add a box shadow in that color use:



Here you see how a box with a 4 pixel #DC506E colored shadow looks like.

```
.boxshadow{ -moz-box-shadow:4px 4px 4px  
4px #DC506E; -webkit-box-shadow:4px 4px  
4px 4px #DC506E; box-shadow:4px 4px 4px  
4px #DC506E }
```

Background

The CSS property to change the background color of an element to Decimal 14438510 is called "background". The background property can be set on classes, ids or directly on the HTML element.

```
.background, #background, body{  
background:#DC506E }
```

If only the background color should be changed can be used:

```
.background{ background-color:#DC506E }
```

This example shows the color as background, it is applied via the CSS property "background".

To optimize and compress your CSS code, you can use our [online CSS compressor and optimizer](#) based on csstidy. If you want to create a linear or radial gradient as background or border, check our [CSS Gradient Generator](#).

Hey! You found this booklet interesting? Support Converting Colors with the new Membership Option!

The pro membership hides all ads, plus gives you double the colors in the color bucket, and more awesome pro features!

[Learn more, Memberships starting at \\$2.50/m!](#)

**Follow me
on Twitter!**

@ConvertingColor