

# Converting Colors

Decimal(14439807)

Have a look what the booklet for  
Decimal(14439807) contains.

<b>Decimal(14439807)</b> .....	3
<i><b>Conversions</b></i> .....	4
<i><b>Details</b></i> .....	6
<i><b>Harmonies</b></i> .....	11
<i><b>Previews</b></i> .....	23
<i><b>Color Blindness Simulation</b></i> .....	26
<i><b>CSS Examples</b></i> .....	29

# Color

**Decimal(14439807)**

# Conversions

## Conversions Part 1

<b>Format</b>	<b>Color</b>
Hex	DC557F
RGB	220, 85, 127
RGB Percent	86%, 33%, 50%
CMY	0.1373, 0.6667, 0.5020
CMYK	0.00, 0.61, 0.42, 0.14
HSL	341°, 66%, 60%
HSV	341°, 61%, 86%
XYZ	36.5945, 23.2449, 22.6367
YIQ	130.1530, 66.9780, 41.6820

# Conversions

## Conversions Part 2

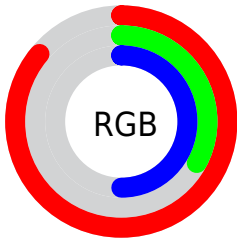
<b>Format</b>	<b>Color</b>
<b>R<sub>YB</sub></b>	220, 85, 127
Decimal	14439807
CIE <sub>Lab</sub>	55.32, 56.31, 4.49
CIE <sub>LCh</sub>	55, 56.493, 4.560
Yxy	23.2449, 0.4437, 0.2818
Android (android.graphics.Color)	4292629887 (0xFFDC557F)
YUV	130.1530, -1.5544, 78.7958
Hunter-Lab	48.2130, 51.1116, 5.9117

# Details

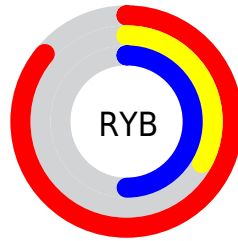
The Decimal color **14439807** is a dark color, and the websafe version is hex **CC3366**. The color can be described as middle muted rose. A complement of this color would be **5627058**, and the grayscale version is **8553090**.

A 20% lighter version of the original color is **16747956**, and **10491726** is the 20% darker color. If you saturate the color by 10%, you get **14434160**, and if you desaturate by 10%, it is **14445454**.

# Distribution



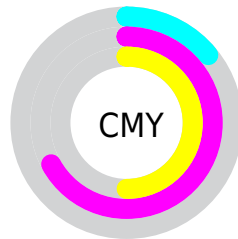
- Red (86%)
- Green (33%)
- Blue (50%)



- Red (86%)
- Yellow (33%)
- Blue (50%)



- Cyan (0%)
- Magenta (61%)
- Yellow (42%)
- Black (14%)



- Cyan (14%)
- Magenta (67%)
- Yellow (50%)

# Brightness & Saturation Gradients

These gradients show how the Decimal color 14439807 changes by changing the brightness by 10 percent. The first figure shows a shift by +10% for each color and the second figure -10%.

Similar to the brightness gradients but the following saturation gradients show a change of the Decimal color 14439807 by changing the saturation by 10% instead.



 14439807

 14439807

16777215

 12466278

 16747956

 10491726

 16755151


 8585272

 16762347

 6684707

 16769791

 4915212

 3080194

 0

 14439807

 14439807

 14434160

 14445454

 14428513

 14451101

 14422866

 14456748

 14417988

 14462396

 14468043

 14473690

 14479337

 14483448

 14483455

# Harmonies

## Analogous

The Analogous color harmony consists of three colors that are next to each other on the color wheel.



12935087



14439807



14180176

# Triad

The Triadic color harmony groups three colors that are evenly spaced from another and form a triangle on the color wheel.



14439807



6590764



38365

# Complementary

The Complementary color scheme is a pair of colors which are on the opposite of each other on the color wheel.



14439807



5627058

# Split Complementary

Split-complementary colors differ from the complementary color scheme. The scheme consists of three colors, the original color and two neighbors of the complement color.



39867



14439807



39256

# Square

The Square scheme is like the rectangle color scheme, but the four colors are evenly spaced on the color wheel.



14439807



9930004



40075



35046

# Rectangle

The Rectangle color scheme consists of four colors that form a rectangle on the color wheel.



14439807



13200436



40075



38868



# Sweetspot

The Sweet Spot groups the original color and five complimentary colors.



14439807



16765407



11621852



8414060



0



8421504



# Same Dimension

The Same Dimension uses a secret algorithm to generate beautiful new colors.



14439807



16728701



14446165



7234406



11337782



3014670



# Inverse Universe

The Inverse Universe completely reimagines the original color for something new.



14439807



16728701



5620700



7234406



11337782



3014670



# Previews

## White Background



This preview shows how the Decimal color 14439807 looks on a white background.

## Color Contrast Check

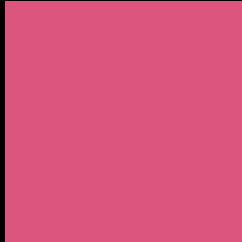
Large Text (above 18pt) WCAG AA ✓ Pass

Any Text WCAG AA × Fail

Large Text (above 18pt) WCAG AAA × Fail

Any Text WCAG AAA × Fail

# Black Background



This preview shows how the Decimal color 14439807 looks on a black background.

## Color Contrast Check

Large Text (above 18pt) WCAG AA ✓ Pass

Any Text WCAG AA ✓ Pass

Large Text (above 18pt) WCAG AAA ✓ Pass

Any Text WCAG AAA × Fail

If you want to check with other color combinations, try the [Color Contrast Checker](#).



## Decimal 14439807 Background



This preview shows how black text looks on a background with the Decimal color 14439807.




This preview shows how white text looks on a background with the Decimal color 14439807.

# Color Blindness Simulation

Color vision deficiency is a very complex topic, and I could not describe the different causes any better than Wikipedia does, so if you want to learn more, you should check out their [article about color blindness](#).

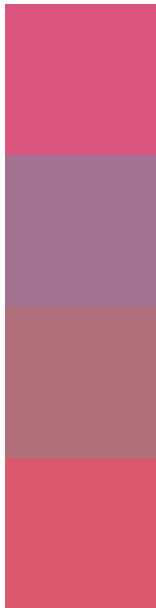
## Dichromacy





**Tritanopia**  
14310241

# Trichromacy



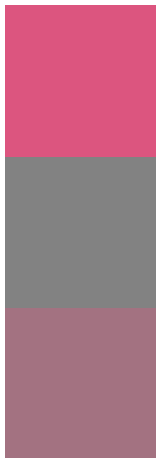
**Original Color**  
14439807

**Protanomaly**  
10646416

**Deuteranomaly**  
11497595

**Tritanomaly**  
14375276

# Monochromacy



**Original Color**  
14439807

**Achromatopsia**  
8553090

**Achromatomaly**  
10711681

# CSS Examples

## Text

The CSS property to change the color of the text to Decimal 14439807 is called "color". The color property can be set on classes, ids or directly on the HTML element.

This example shows how text in the color #DC557F looks like.

```
.text, #text, p{  
    color:#DC557F  
}
```

If you want to add a text shadow in that color use the text-shadow property, you can generate a text shadow directly with our [CSS Text Shadow Generator](#).

Here you see how black text with a 4 pixel #DC557F colored shadow looks like.

```
.shadow{ text-shadow: 4px 4px 2px #DC557F
}
```

## Border

The CSS property to change the border of an element to Decimal 14439807 is called "border". The border property can be set on classes, ids or directly on the HTML element.

This example shows the color as border, it can be applied via the CSS property "border" or "border-color".

```
.border, #border, table{ border:4px solid
#DC557F }
```

If only the border color should be changed use the property `border-color`.

```
.border{ border-color:#DC557F }
```

If you want to add a box shadow in that color use:

Here you see how a box with a 4 pixel #DC557F colored shadow looks like.

```
.boxshadow{ -moz-box-shadow:4px 4px 4px  
4px #DC557F; -webkit-box-shadow:4px 4px  
4px 4px #DC557F; box-shadow:4px 4px 4px  
4px #DC557F }
```

# Background

The CSS property to change the background color of an element to Decimal 14439807 is called "background". The background property can be set on classes, ids or directly on the HTML element.

```
.background, #background, body{  
background:#DC557F }
```

If only the background color should be changed can be used:

```
.background{ background-color:#DC557F }
```

This example shows the color as background, it is applied via the CSS property "background".

To optimize and compress your CSS code, you can use our [online CSS compressor and optimizer](#) based on csstidy. If you want to create a linear or radial gradient as background or border, check our [CSS Gradient Generator](#).



Hey! You found this booklet interesting? Support Converting Colors with the new Membership Option!

The pro membership hides all ads, plus gives you double the colors in the color bucket, and more awesome pro features!

**[Learn more, Memberships starting at \\$2.50/m!](#)**

**Follow me  
on Twitter!**

@ConvertingColor