

# Converting Colors

Decimal(14440048)

Have a look what the booklet for  
Decimal(14440048) contains.

<b>Decimal(14440048)</b> .....	3
<i><b>Conversions</b></i> .....	4
<i><b>Details</b></i> .....	6
<i><b>Harmonies</b></i> .....	11
<i><b>Previews</b></i> .....	23
<i><b>Color Blindness Simulation</b></i> .....	26
<i><b>CSS Examples</b></i> .....	29

# Color

**Decimal(14440048)**

# Conversions

## Conversions Part 1

<b>Format</b>	<b>Color</b>
Hex	DC5670
RGB	220, 86, 112
RGB Percent	86%, 34%, 44%
CMY	0.1373, 0.6627, 0.5608
CMYK	0.00, 0.61, 0.49, 0.14
HSL	348°, 66%, 60%
HSV	348°, 61%, 86%
XYZ	35.7676, 23.0411, 17.8914
YIQ	129.0300, 71.5180, 36.4940

# Conversions

## Conversions Part 2

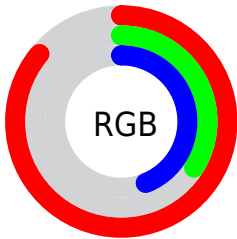
<b>Format</b>	<b>Color</b>
<b>R<sub>YB</sub></b>	220, 86, 112
Decimal	14440048
CIE Lab	55.11, 54.45, 13.07
CIE LCh	55, 56.001, 13.493
Yxy	23.0411, 0.4663, 0.3004
Android (android.graphics.Color)	4292630128 (0xFFDC5670)
YUV	129.0300, -8.3958, 79.7807
Hunter-Lab	48.0011, 49.0058, 11.5016

# Details

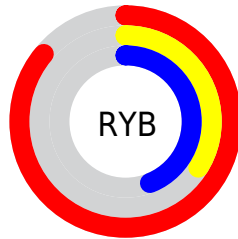
The Decimal color **14440048** is a dark color, and the websafe version is hex **CC3366**. The color can be described as middle muted rose. A complement of this color would be **5692610**, and the grayscale version is **8487297**.

A 20% lighter version of the original color is **16747940**, and **10492481** is the 20% darker color. If you saturate the color by 10%, you get **14434398**, and if you desaturate by 10%, it is **14445698**.

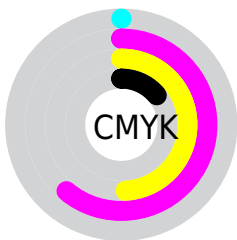
# Distribution



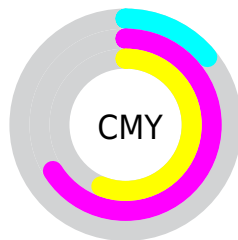
- Red (86%)
- Green (34%)
- Blue (44%)



- Red (86%)
- Yellow (34%)
- Blue (44%)



- Cyan (0%)
- Magenta (61%)
- Yellow (49%)
- Black (14%)



- Cyan (14%)
- Magenta (66%)
- Yellow (56%)

# Brightness & Saturation Gradients

These gradients show how the Decimal color 14440048 changes by changing the brightness by 10 percent. The first figure shows a shift by +10% for each color and the second figure -10%.

Similar to the brightness gradients but the following saturation gradients show a change of the Decimal color 14440048 by changing the saturation by 10% instead.



 14440048

 14440048

16777215

 12466776

 16747940

 10492481


 16755135

 8519723

 16762586

 6619159

 16770039

 4784128

 2949121

 0

 14440048

 14440048

 14434398

 14445698

 14428749

 14451347

 14423099

 14456997

 14417963

 14462647

 14468297

 14473946

 14479596

 14483454

 14483455

# Harmonies

## Analogous

The Analogous color harmony consists of three colors that are next to each other on the color wheel.



13523617



14440048



13722691

# Triad

The Triadic color harmony groups three colors that are evenly spaced from another and form a triangle on the color wheel.



14440048



5346105



37345

# Complementary

The Complementary color scheme is a pair of colors which are on the opposite of each other on the color wheel.



14440048



5692610

# Split Complementary

Split-complementary colors differ from the complementary color scheme. The scheme consists of three colors, the original color and two neighbors of the complement color.



39366



14440048



39271

# Square

The Square scheme is like the rectangle color scheme, but the four colors are evenly spaced on the color wheel.



14440048



8947736



39833



5079779

# Rectangle

The Rectangle color scheme consists of four colors that form a rectangle on the color wheel.



14440048



12480810



39833



38106



# Sweetspot

The Sweet Spot groups the original color and five complimentary colors.



14440048



16765402



12670684



8414057



0



8421504



# Same Dimension

The Same Dimension uses a secret algorithm to generate beautiful new colors.



14440048



16729449



14450262



7234405



11337762



3014665



# Inverse Universe

The Inverse Universe completely reimagines the original color for something new.



14440048



16729449



5682396



7234405



11337762



3014665



# Previews

## White Background



This preview shows how the Decimal color 14440048 looks on a white background.

## Color Contrast Check

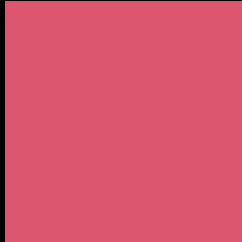
Large Text (above 18pt) WCAG AA ✓ Pass

Any Text WCAG AA × Fail

Large Text (above 18pt) WCAG AAA × Fail

Any Text WCAG AAA × Fail

# Black Background



This preview shows how the Decimal color 14440048 looks on a black background.

## Color Contrast Check

Large Text (above 18pt) WCAG AA ✓ Pass

Any Text WCAG AA ✓ Pass

Large Text (above 18pt) WCAG AAA ✓ Pass

Any Text WCAG AAA × Fail

If you want to check with other color combinations, try the [Color Contrast Checker](#).



## Decimal 14440048 Background



This preview shows how black text looks on a background with the Decimal color 14440048.

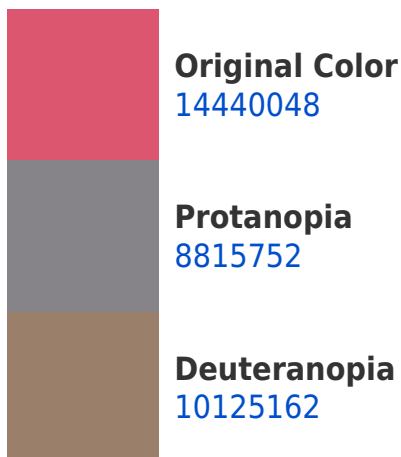


This preview shows how white text looks on a background with the Decimal color 14440048.

# Color Blindness Simulation

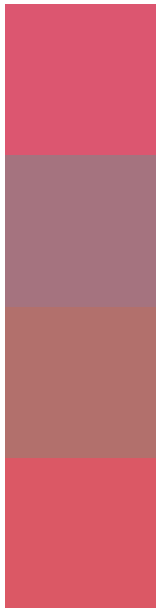
Color vision deficiency is a very complex topic, and I could not describe the different causes any better than Wikipedia does, so if you want to learn more, you should check out their [article about color blindness](#).

## Dichromacy





# Trichromacy



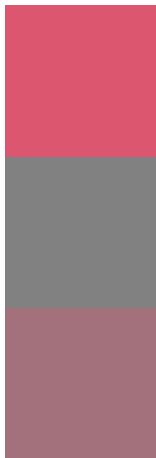
**Original Color**  
14440048

**Protanomaly**  
10843007

**Deuteranomaly**  
11694188

**Tritanomaly**  
14375013

# Monochromacy



**Original Color**  
14440048

**Achromatopsia**  
8487297

**Achromatomaly**  
10645883

# CSS Examples

## Text

The CSS property to change the color of the text to Decimal 14440048 is called "color". The color property can be set on classes, ids or directly on the HTML element.

This example shows how text in the color #DC5670 looks like.

```
.text, #text, p{  
  color:#DC5670  
}
```

If you want to add a text shadow in that color use the text-shadow property, you can generate a text shadow directly with our [CSS Text Shadow Generator](#).

Here you see how black text with a 4 pixel #DC5670 colored shadow looks like.

```
.shadow{ text-shadow: 4px 4px 2px #DC5670
}
```

## Border

The CSS property to change the border of an element to Decimal 14440048 is called "border". The border property can be set on classes, ids or directly on the HTML element.

This example shows the color as border, it can be applied via the CSS property "border" or "border-color".

```
.border, #border, table{ border:4px solid
#DC5670 }
```

If only the border color should be changed use the property `border-color`.

```
.border{ border-color:#DC5670 }
```

If you want to add a box shadow in that color use:

Here you see how a box with a 4 pixel #DC5670 colored shadow looks like.

```
.boxshadow{ -moz-box-shadow:4px 4px 4px  
4px #DC5670; -webkit-box-shadow:4px 4px  
4px 4px #DC5670; box-shadow:4px 4px 4px  
4px #DC5670 }
```

# Background

The CSS property to change the background color of an element to Decimal 14440048 is called "background". The background property can be set on classes, ids or directly on the HTML element.

```
.background, #background, body{  
background:#DC5670 }
```

If only the background color should be changed can be used:

```
.background{ background-color:#DC5670 }
```

This example shows the color as background, it is applied via the CSS property "background".

To optimize and compress your CSS code, you can use our [online CSS compressor and optimizer](#) based on csstidy. If you want to create a linear or radial gradient as background or border, check our [CSS Gradient Generator](#).



Hey! You found this booklet interesting? Support Converting Colors with the new Membership Option!

The pro membership hides all ads, plus gives you double the colors in the color bucket, and more awesome pro features!

**[Learn more, Memberships starting at \\$2.50/m!](#)**

**Follow me  
on Twitter!**

@ConvertingColor