

Converting Colors

Decimal(14454169)

Have a look what the booklet for
Decimal(14454169) contains.

Decimal(14454169)	3
<i>Conversions</i>	4
<i>Details</i>	6
<i>Harmonies</i>	11
<i>Previews</i>	23
<i>Color Blindness Simulation</i>	26
<i>CSS Examples</i>	29

Color

Decimal(14454169)

Conversions

Conversions Part 1

Format	Color
Hex	DC8D99
RGB	220, 141, 153
RGB Percent	86%, 55%, 60%
CMY	0.1373, 0.4471, 0.4000
CMYK	0.00, 0.36, 0.30, 0.14
HSL	351°, 53%, 71%
HSV	351°, 36%, 86%
XYZ	44.7898, 36.5653, 34.8341
YIQ	165.9890, 43.2320, 20.4800

Conversions

Conversions Part 2

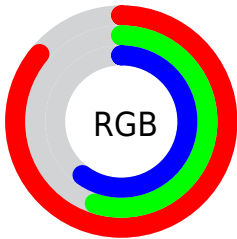
Format	Color
R _Y B	220, 141, 153
Decimal	14454169
CIE Lab	66.95, 31.55, 6.23
CIE LCh	67, 32.158, 11.170
Yxy	36.5653, 0.3855, 0.3147
Android (android.graphics.Color)	4292644249 (0xFFDC8D99)
YUV	165.9890, -6.4036, 47.3676
Hunter-Lab	60.4693, 26.3946, 8.1737

Details

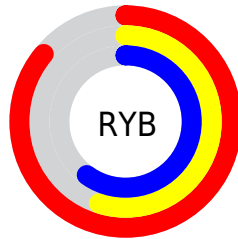
The Decimal color **14454169** is a light color, and the websafe version is hex **CC9999**. A complement of this color would be **9297104**, and the grayscale version is **10921638**.

A 20% lighter version of the original color is **16761807**, and **10705510** is the 20% darker color. If you saturate the color by 10%, you get **14448518**, and if you desaturate by 10%, it is **14459820**.

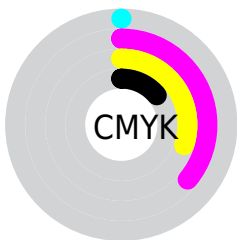
Distribution



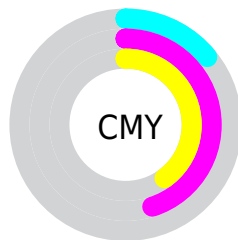
- Red (86%)
- Green (55%)
- Blue (60%)



- Red (86%)
- Yellow (55%)
- Blue (60%)



- Cyan (0%)
- Magenta (36%)
- Yellow (30%)
- Black (14%)



- Cyan (14%)
- Magenta (45%)
- Yellow (40%)

Brightness & Saturation Gradients

These gradients show how the Decimal color 14454169 changes by changing the brightness by 10 percent. The first figure shows a shift by +10% for each color and the second figure -10%.

Similar to the brightness gradients but the following saturation gradients show a change of the Decimal color 14454169 by changing the saturation by 10% instead.

 14454169

 14454169

16777215

 12546943

 16761807

 10705510

 16769259

 8864078

 16776703

 7153975

 5378082

 3735564

 2097153

 0

 14454169

 14454169

 14448518

 14459820

 14442868

 14465470

 14437217

 14471121

 14431566

 14476772

 14425916

 14482422

 14420265

 14483455

 14417953

Harmonies

Analogous

The Analogous color harmony consists of three colors that are next to each other on the color wheel.



13668278



14454169



14193278

Triad

The Triadic color harmony groups three colors that are evenly spaced from another and form a triangle on the color wheel.



14454169



9219190



6269913

Complementary

The Complementary color scheme is a pair of colors which are on the opposite of each other on the color wheel.



14454169



9297104

Split Complementary

Split-complementary colors differ from the complementary color scheme. The scheme consists of three colors, the original color and two neighbors of the complement color.



4174280



14454169



6926735

Square

The Square scheme is like the rectangle color scheme, but the four colors are evenly spaced on the color wheel.



14454169



11314538



4830125



9216731

Rectangle

The Rectangle color scheme consists of four colors that form a rectangle on the color wheel.



14454169



13539441



4830125



5418453

Sweetspot

The Sweet Spot groups the original color and five complimentary colors.



14454169



16770023



13602268



8417137



0



8421504

Same Dimension

The Same Dimension uses a secret algorithm to generate beautiful new colors.



14454169



16748962



14460813



7234404



11337754



3014663

Inverse Universe

The Inverse Universe completely reimagines the original color for something new.



14454169



16748962



9290460



7234404



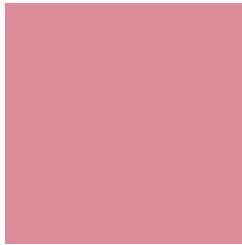
11337754



3014663

Previews

White Background



This preview shows how the Decimal color 14454169 looks on a white background.

Color Contrast Check

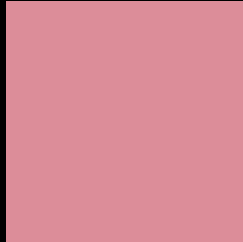
Large Text (above 18pt) WCAG AA × Fail

Any Text WCAG AA × Fail

Large Text (above 18pt) WCAG AAA × Fail

Any Text WCAG AAA × Fail

Black Background



This preview shows how the Decimal color 14454169 looks on a black background.

Color Contrast Check

Large Text (above 18pt) WCAG AA ✓ Pass

Any Text WCAG AA ✓ Pass

Large Text (above 18pt) WCAG AAA ✓ Pass

Any Text WCAG AAA ✓ Pass

If you want to check with other color combinations, try the [Color Contrast Checker](#).

Decimal 14454169 Background



This preview shows how black text looks on a background with the Decimal color 14454169.

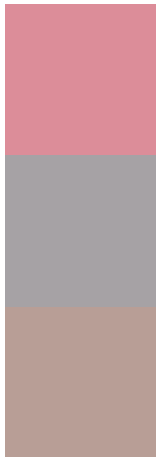


This preview shows how white text looks on a background with the Decimal color 14454169.

Color Blindness Simulation

Color vision deficiency is a very complex topic, and I could not describe the different causes any better than Wikipedia does, so if you want to learn more, you should check out their [article about color blindness](#).


Dichromacy



Original Color
14454169

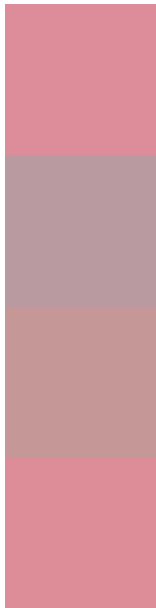
Protanopia
10920613

Deuteranopia
12099222



Tritanopia
14454168

Trichromacy



Original Color
14454169

Protanomaly
12229281

Deuteranomaly
12949655

Tritanomaly
14454168

Monochromacy



Original Color
14454169

Achromatopsia
10921638

Achromatomaly
12230049

CSS Examples

Text

The CSS property to change the color of the text to Decimal 14454169 is called "color". The color property can be set on classes, ids or directly on the HTML element.

This example shows how text in the color #DC8D99 looks like.

```
.text, #text, p{  
    color:#DC8D99  
}
```

If you want to add a text shadow in that color use the text-shadow property, you can generate a text shadow directly with our [CSS Text Shadow Generator](#).

Here you see how black text with a 4 pixel #DC8D99 colored shadow looks like.

```
.shadow{ text-shadow: 4px 4px 2px #DC8D99
}
```

Border

The CSS property to change the border of an element to Decimal 14454169 is called "border". The border property can be set on classes, ids or directly on the HTML element.

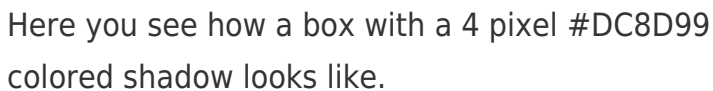
This example shows the color as border, it can be applied via the CSS property "border" or "border-color".

```
.border, #border, table{ border:4px solid
#DC8D99 }
```

If only the border color should be changed use the property `border-color`.

```
.border{ border-color:#DC8D99 }
```

If you want to add a box shadow in that color use:



Here you see how a box with a 4 pixel `#DC8D99` colored shadow looks like.

```
.boxshadow{ -moz-box-shadow:4px 4px 4px  
4px #DC8D99; -webkit-box-shadow:4px 4px  
4px 4px #DC8D99; box-shadow:4px 4px 4px  
4px #DC8D99 }
```

Background

The CSS property to change the background color of an element to Decimal 14454169 is called "background". The background property can be set on classes, ids or directly on the HTML element.

```
.background, #background, body{  
background:#DC8D99 }
```

If only the background color should be changed can be used:

```
.background{ background-color:#DC8D99 }
```

This example shows the color as background, it is applied via the CSS property "background".

To optimize and compress your CSS code, you can use our [online CSS compressor and optimizer](#) based on csstidy. If you want to create a linear or radial gradient as background or border, check our [CSS Gradient Generator](#).

Hey! You found this booklet interesting? Support Converting Colors with the new Membership Option!

The pro membership hides all ads, plus gives you double the colors in the color bucket, and more awesome pro features!

[Learn more, Memberships starting at \\$2.50/m!](#)

**Follow me
on Twitter!**

@ConvertingColor