

Converting Colors

Decimal(14455976)

Have a look what the booklet for
Decimal(14455976) contains.

Decimal(14455976)	3
<i>Conversions</i>	4
<i>Details</i>	6
<i>Harmonies</i>	11
<i>Previews</i>	23
<i>Color Blindness Simulation</i>	26
<i>CSS Examples</i>	29

Color

Decimal(14455976)

Conversions

Conversions Part 1

Format	Color
Hex	DC94A8
RGB	220, 148, 168
RGB Percent	86%, 58%, 66%
CMY	0.1373, 0.4196, 0.3412
CMYK	0.00, 0.33, 0.24, 0.14
HSL	343°, 51%, 72%
HSV	343°, 33%, 86%
XYZ	47.1730, 39.2226, 42.1302
YIQ	171.8080, 36.4920, 21.4840

Conversions

Conversions Part 2

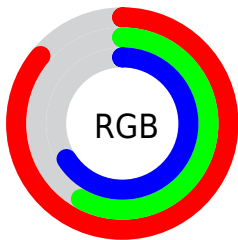
Format	Color
R _Y B	220, 148, 168
Decimal	14455976
CIE Lab	68.91, 29.87, 0.66
CIE LCh	69, 29.879, 1.269
Yxy	39.2226, 0.3670, 0.3052
Android (android.graphics.Color)	4292646056 (0xFFDC94A8)
YUV	171.8080, -1.8773, 42.2644
Hunter-Lab	62.6280, 24.8519, 3.9548

Details

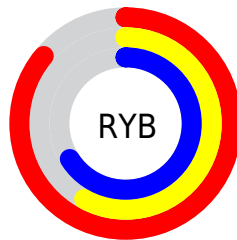
The Decimal color **14455976** is a light color, and the websafe version is hex **CC9999**. A complement of this color would be **9755848**, and the grayscale version is **11316396**.

A 20% lighter version of the original color is **16763871**, and **10772596** is the 20% darker color. If you saturate the color by 10%, you get **14450328**, and if you desaturate by 10%, it is **14461624**.

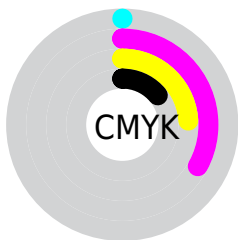
Distribution



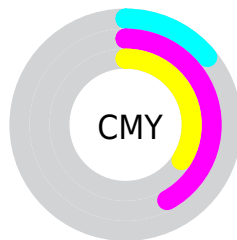
- Red (86%)
- Green (58%)
- Blue (66%)



- Red (86%)
- Yellow (58%)
- Blue (66%)



- Cyan (0%)
- Magenta (33%)
- Yellow (24%)
- Black (14%)



- Cyan (14%)
- Magenta (42%)
- Yellow (34%)

Brightness & Saturation Gradients

These gradients show how the Decimal color 14455976 changes by changing the brightness by 10 percent. The first figure shows a shift by +10% for each color and the second figure -10%.

Similar to the brightness gradients but the following saturation gradients show a change of the Decimal color 14455976 by changing the saturation by 10% instead.

 14455976

 14455976

16777215

 12548750

 16763871

 10772596

 16771068

 8931420

 7221316

 5511214

 3866649

 2555905

 0

 14455976

 14455976

 14450328

 14461624

 14444680

 14467272

 14439032

 14472920

 14433384

 14478568

 14427737

 14483447

 14422089

 14483455

 14417981

Harmonies

Analogous

The Analogous color harmony consists of three colors that are next to each other on the color wheel.



13408451



14455976



14521997

Triad

The Triadic color harmony groups three colors that are evenly spaced from another and form a triangle on the color wheel.



14455976



10334073



6402775

Complementary

The Complementary color scheme is a pair of colors which are on the opposite of each other on the color wheel.



14455976



9755848

Split Complementary

Split-complementary colors differ from the complementary color scheme. The scheme consists of three colors, the original color and two neighbors of the complement color.



5355203



14455976



8304013

Square

The Square scheme is like the rectangle color scheme, but the four colors are evenly spaced on the color wheel.



14455976



12232562



6338472



8825566

Rectangle

The Rectangle color scheme consists of four colors that form a rectangle on the color wheel.



14455976



14064511



6338472



5813457

Sweetspot

The Sweet Spot groups the original color and five complimentary colors.



14455976



16770797



13145308



8417396



0



8421504

Same Dimension

The Same Dimension uses a secret algorithm to generate beautiful new colors.



14455976



16751799



14460052



7234406



11337776



3014669

Inverse Universe

The Inverse Universe completely reimagines the original color for something new.



14455976



16751799



9751772



7234406



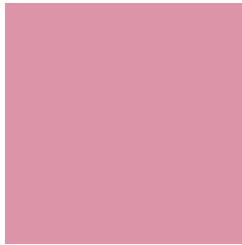
11337776



3014669

Previews

White Background



This preview shows how the Decimal color 14455976 looks on a white background.

Color Contrast Check

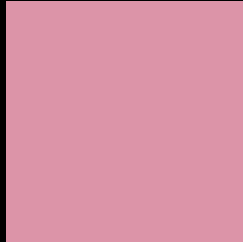
Large Text (above 18pt) WCAG AA × Fail

Any Text WCAG AA × Fail

Large Text (above 18pt) WCAG AAA × Fail

Any Text WCAG AAA × Fail

Black Background



This preview shows how the Decimal color 14455976 looks on a black background.

Color Contrast Check

Large Text (above 18pt) WCAG AA ✓ Pass

Any Text WCAG AA ✓ Pass

Large Text (above 18pt) WCAG AAA ✓ Pass

Any Text WCAG AAA ✓ Pass

If you want to check with other color combinations, try the [Color Contrast Checker](#).

Decimal 14455976 Background



This preview shows how black text looks on a background with the Decimal color 14455976.



This preview shows how white text looks on a background with the Decimal color 14455976.

Color Blindness Simulation

Color vision deficiency is a very complex topic, and I could not describe the different causes any better than Wikipedia does, so if you want to learn more, you should check out their [article about color blindness](#).


Dichromacy



Original Color
14455976

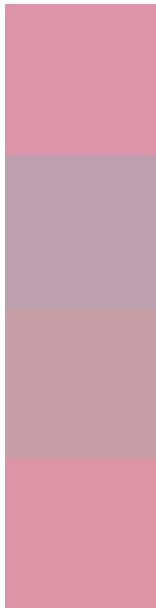
Protanopia
11053235

Deuteranopia
12231589



Tritanopia
14390689

Trichromacy



Original Color
14455976

Protanomaly
12296623

Deuteranomaly
13016742

Tritanomaly
14390692

Monochromacy



Original Color
14455976

Achromatopsia
11316396

Achromatomaly
12428203

CSS Examples

Text

The CSS property to change the color of the text to Decimal 14455976 is called "color". The color property can be set on classes, ids or directly on the HTML element.

This example shows how text in the color #DC94A8 looks like.

```
.text, #text, p{  
    color:#DC94A8  
}
```

If you want to add a text shadow in that color use the text-shadow property, you can generate a text shadow directly with our [CSS Text Shadow Generator](#).

Here you see how black text with a 4 pixel #DC94A8 colored shadow looks like.

```
.shadow{ text-shadow: 4px 4px 2px #DC94A8
}
```

Border

The CSS property to change the border of an element to Decimal 14455976 is called "border". The border property can be set on classes, ids or directly on the HTML element.

This example shows the color as border, it can be applied via the CSS property "border" or "border-color".

```
.border, #border, table{ border:4px solid
#DC94A8 }
```

If only the border color should be changed use the property `border-color`.

```
.border{ border-color:#DC94A8 }
```

If you want to add a box shadow in that color use:

Here you see how a box with a 4 pixel #DC94A8 colored shadow looks like.

```
.boxshadow{ -moz-box-shadow:4px 4px 4px  
4px #DC94A8; -webkit-box-shadow:4px 4px  
4px 4px #DC94A8; box-shadow:4px 4px 4px  
4px #DC94A8 }
```

Background

The CSS property to change the background color of an element to Decimal 14455976 is called "background". The background property can be set on classes, ids or directly on the HTML element.

```
.background, #background, body{  
background:#DC94A8 }
```

If only the background color should be changed can be used:

```
.background{ background-color:#DC94A8 }
```

This example shows the color as background, it is applied via the CSS property "background".

To optimize and compress your CSS code, you can use our [online CSS compressor and optimizer](#) based on csstidy. If you want to create a linear or radial gradient as background or border, check our [CSS Gradient Generator](#).

Hey! You found this booklet interesting? Support Converting Colors with the new Membership Option!

The pro membership hides all ads, plus gives you double the colors in the color bucket, and more awesome pro features!

[Learn more, Memberships starting at \\$2.50/m!](#)

**Follow me
on Twitter!**

@ConvertingColor