

# Converting Colors

Decimal(14461587)

Have a look what the booklet for  
Decimal(14461587) contains.

<b>Decimal(14461587)</b> .....	3
<i><b>Conversions</b></i> .....	4
<i><b>Details</b></i> .....	6
<i><b>Harmonies</b></i> .....	11
<i><b>Previews</b></i> .....	23
<i><b>Color Blindness Simulation</b></i> .....	26
<i><b>CSS Examples</b></i> .....	29

# **Color**

**Decimal(14461587)**

# Conversions

## Conversions Part 1

Format	Color
Hex	DCAA93
RGB	220, 170, 147
RGB Percent	86%, 67%, 58%
CMY	0.1373, 0.3333, 0.4235
CMYK	0.00, 0.23, 0.33, 0.14
HSL	19°, 51%, 72%
HSV	19°, 33%, 86%
XYZ	49.1564, 46.0717, 33.9057
YIQ	182.3280, 37.1830, 3.4470

# Conversions

## Conversions Part 2

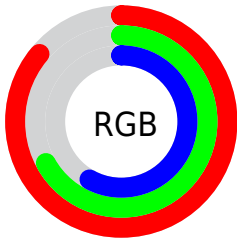
Format	Color
R <sub>Y</sub> B	220, 181, 147
Decimal	14461587
CIE Lab	73.59, 15.17, 18.91
CIE LCh	74, 24.243, 51.257
Yxy	46.0717, 0.3807, 0.3568
Android (android.graphics.Color)	4292651667 (0xFFDCAA93)
YUV	182.3280, -17.4167, 33.0383
Hunter-Lab	67.8761, 10.4878, 17.8966

# Details

The Decimal color **14461587** is a light color, and the websafe version is hex **CC9999**. A complement of this color would be **9684444**, and the grayscale version is **11974326**.

A 20% lighter version of the original color is **16769481**, and **10778208** is the 20% darker color. If you saturate the color by 10%, you get **14457725**, and if you desaturate by 10%, it is **14465449**.

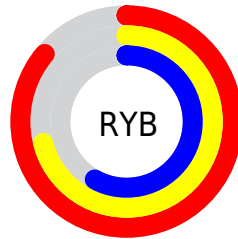
# Distribution



Red (86%)

Green (67%)

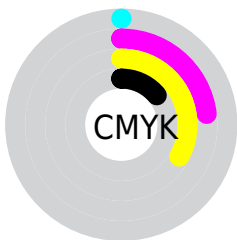
Blue (58%)



Red (86%)

Yellow (71%)

Blue (58%)

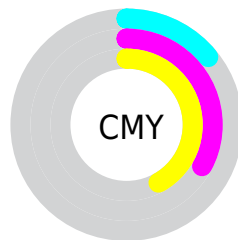


Cyan (0%)

Magenta (23%)

Yellow (33%)

Black (14%)



Cyan (14%)

Magenta (33%)

Yellow (42%)

# Brightness & Saturation Gradients

These gradients show how the Decimal color 14461587 changes by changing the brightness by 10 percent. The first figure shows a shift by +10% for each color and the second figure -10%.

Similar to the brightness gradients but the following saturation gradients show a change of the Decimal color 14461587 by changing the saturation by 10% instead.



 14461587

 14461587

16777215

 12554105

 16769481

 10778208

 16776933

 8936776

 7226674

 5517084

 3938564

 2425088

 0

 14461587

 14461587

 14457725

 14465449

 14453863

 14469311

 14450001

 14473173

 14446139

 14477035

 14442277

 14480895

 14438415

 14483455

 14435584

# Harmonies

## Analogous

The Analogous color harmony consists of three colors that are next to each other on the color wheel.



14919078



14461587



13414793

# Triad

The Triadic color harmony groups three colors that are evenly spaced from another and form a triangle on the color wheel.



14461587



8700333



11579870

# Complementary

The Complementary color scheme is a pair of colors which are on the opposite of each other on the color wheel.



14461587



9684444

# Split Complementary

Split-complementary colors differ from the complementary color scheme. The scheme consists of three colors, the original color and two neighbors of the complement color.



9550304



14461587



7782852

# Square

The Square scheme is like the rectangle color scheme, but the four colors are evenly spaced on the color wheel.



14461587



10206872



8109783



13347537

# Rectangle

The Rectangle color scheme consists of four colors that form a rectangle on the color wheel.



14461587



12433033



8109783



10925280

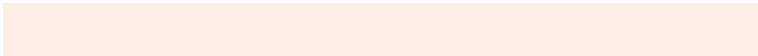


# Sweetspot

The Sweet Spot groups the original color and five complimentary colors.



14461587



16772838



14455750



8418672



0



8421504



# Same Dimension

The Same Dimension uses a secret algorithm to generate beautiful new colors.



14461587



16759193



14470547



7235171



11351808



3018240

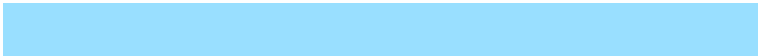


# Inverse Universe

The Inverse Universe completely reimagines the original color for something new.



9684444



10084351



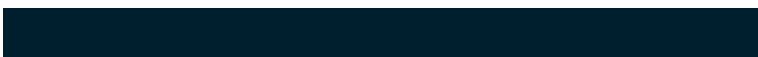
9675484



6515310



30637



7982



# Previews

## White Background



This preview shows how the Decimal color 14461587 looks on a white background.

## Color Contrast Check

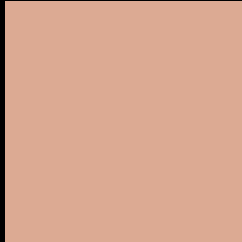
Large Text (above 18pt) WCAG AA × Fail

Any Text WCAG AA × Fail

Large Text (above 18pt) WCAG AAA × Fail

Any Text WCAG AAA × Fail

# Black Background



This preview shows how the Decimal color 14461587 looks on a black background.

## Color Contrast Check

Large Text (above 18pt) WCAG AA ✓ Pass

Any Text WCAG AA ✓ Pass

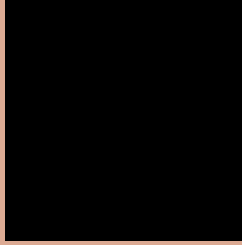
Large Text (above 18pt) WCAG AAA ✓ Pass

Any Text WCAG AAA ✓ Pass

If you want to check with other color combinations, try the [Color Contrast Checker](#).



## Decimal 14461587 Background



This preview shows how black text looks on a background with the Decimal color 14461587.




This preview shows how white text looks on a background with the Decimal color 14461587.

# Color Blindness Simulation

Color vision deficiency is a very complex topic, and I could not describe the different causes any better than Wikipedia does, so if you want to learn more, you should check out their [article about color blindness](#).

## Dichromacy





**Tritanopia**  
14657202

# Trichromacy



**Original Color**  
14461587

**Protanomaly**  
13283734

**Deuteranomaly**  
14069138

**Tritanomaly**  
14591911

# Monochromacy



**Original Color**  
14461587

**Achromatopsia**  
11974326

**Achromatomaly**  
12890793

# CSS Examples

## Text

The CSS property to change the color of the text to Decimal 14461587 is called "color". The color property can be set on classes, ids or directly on the HTML element.

This example shows how text in the color #DCAA93 looks like.

```
.text, #text, p{  
  color:#DCAA93  
}
```

If you want to add a text shadow in that color use the text-shadow property, you can generate a text shadow directly with our [CSS Text Shadow Generator](#).

Here you see how black text with a 4 pixel #DCAA93 colored shadow looks like.

```
.shadow{ text-shadow: 4px 4px 2px #DCAA93
}
```

## Border

The CSS property to change the border of an element to Decimal 14461587 is called "border". The border property can be set on classes, ids or directly on the HTML element.

This example shows the color as border, it can be applied via the CSS property "border" or "border-color".

```
.border, #border, table{ border:4px solid
#DCAA93 }
```

If only the border color should be changed use the property `border-color`.

```
.border{ border-color:#DCAA93 }
```

If you want to add a box shadow in that color use:

Here you see how a box with a 4 pixel #DCAA93 colored shadow looks like.

```
.boxshadow{ -moz-box-shadow:4px 4px 4px  
4px #DCAA93; -webkit-box-shadow:4px 4px  
4px 4px #DCAA93; box-shadow:4px 4px 4px  
4px #DCAA93 }
```

# Background

The CSS property to change the background color of an element to Decimal 14461587 is called "background". The background property can be set on classes, ids or directly on the HTML element.

```
.background, #background, body{  
background:#DCAA93 }
```

If only the background color should be changed can be used:

```
.background{ background-color:#DCAA93 }
```

This example shows the color as background, it is applied via the CSS property "background".

To optimize and compress your CSS code, you can use our [online CSS compressor and optimizer](#) based on csstidy. If you want to create a linear or radial gradient as background or border, check our [CSS Gradient Generator](#).



Hey! You found this booklet interesting? Support Converting Colors with the new Membership Option!

The pro membership hides all ads, plus gives you double the colors in the color bucket, and more awesome pro features!

**[Learn more, Memberships starting at \\$2.50/m!](#)**

**Follow me  
on Twitter!**

@ConvertingColor