

# Converting Colors

Decimal(14462867)

Have a look what the booklet for  
Decimal(14462867) contains.

<b>Decimal(14462867)</b> .....	3
<i><b>Conversions</b></i> .....	4
<i><b>Details</b></i> .....	6
<i><b>Harmonies</b></i> .....	11
<i><b>Previews</b></i> .....	23
<i><b>Color Blindness Simulation</b></i> .....	26
<i><b>CSS Examples</b></i> .....	29

# **Color**

**Decimal(14462867)**

# Conversions

## Conversions Part 1

Format	Color
Hex	DCAF93
RGB	220, 175, 147
RGB Percent	86%, 69%, 58%
CMY	0.1373, 0.3137, 0.4235
CMYK	0.00, 0.20, 0.33, 0.14
HSL	23°, 51%, 72%
HSV	23°, 33%, 86%
XYZ	50.1116, 47.9822, 34.2241
YIQ	185.2630, 35.8080, 0.8320

# Conversions

## Conversions Part 2

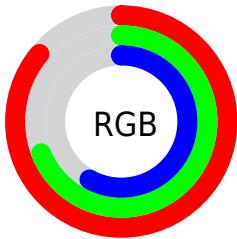
Format	Color
R <sub>Y</sub> B	220, 192, 147
Decimal	14462867
CIE Lab	74.81, 12.49, 20.59
CIE LCh	75, 24.083, 58.762
Yxy	47.9822, 0.3787, 0.3626
Android (android.graphics.Color)	4292652947 (0xFFDCAF93)
YUV	185.2630, -18.8637, 30.4643
Hunter-Lab	69.2692, 7.9118, 19.1948

# Details

The Decimal color **14462867** is a light color, and the websafe version is hex **CC9966**. A complement of this color would be **9683164**, and the grayscale version is **12171705**.

A 20% lighter version of the original color is **16771017**, and **10779488** is the 20% darker color. If you saturate the color by 10%, you get **14459261**, and if you desaturate by 10%, it is **14466473**.

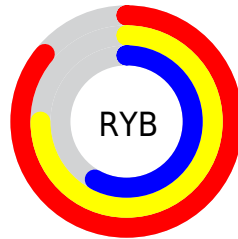
# Distribution



Red (86%)

Green (69%)

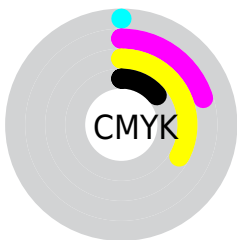
Blue (58%)



Red (86%)

Yellow (75%)

Blue (58%)

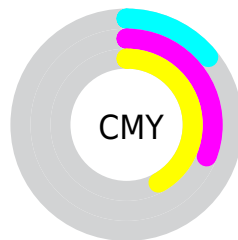


Cyan (0%)

Magenta (20%)

Yellow (33%)

Black (14%)



Cyan (14%)

Magenta (31%)

Yellow (42%)

# Brightness & Saturation Gradients

These gradients show how the Decimal color 14462867 changes by changing the brightness by 10 percent. The first figure shows a shift by +10% for each color and the second figure -10%.

Similar to the brightness gradients but the following saturation gradients show a change of the Decimal color 14462867 by changing the saturation by 10% instead.



 14462867

 14462867

16777215

 12620921

 16771017

 10779488

 16777189

 9003592

 7227954

 5518108

 3939844

 2426624

 0

 14462867

 14462867

 14459261

 14466473

 14455911

 14469823

 14452305

 14473429

 14448955

 14476779

 14445349

 14480383

 14441999

 14483455

 14439424

# Harmonies

## Analogous

The Analogous color harmony consists of three colors that are next to each other on the color wheel.



15051428



14462867



13285004

# Triad

The Triadic color harmony groups three colors that are evenly spaced from another and form a triangle on the color wheel.



14462867



8635830



12301279

# Complementary

The Complementary color scheme is a pair of colors which are on the opposite of each other on the color wheel.



14462867



9683164

# Split Complementary

Split-complementary colors differ from the complementary color scheme. The scheme consists of three colors, the original color and two neighbors of the complement color.



10271460



14462867



7980237

# Square

The Square scheme is like the rectangle color scheme, but the four colors are evenly spaced on the color wheel.



14462867



10011297



8634845



13937871

# Rectangle

The Rectangle color scheme consists of four colors that form a rectangle on the color wheel.



14462867



12237710



8634845



11646434

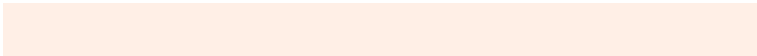


# Sweetspot

The Sweet Spot groups the original color and five complimentary colors.



14462867



16773094



14455744



8418928



0



8421504



# Same Dimension

The Same Dimension uses a secret algorithm to generate beautiful new colors.



14462867



16760985



14472083



7235427



11354880



3019264

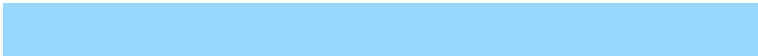


# Inverse Universe

The Inverse Universe completely reimagines the original color for something new.



9683164



10082559



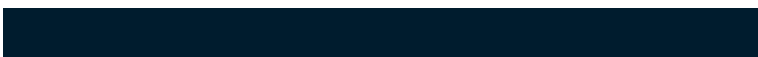
9673948



6515054



27565



7214



# Previews

## White Background



This preview shows how the Decimal color 14462867 looks on a white background.

## Color Contrast Check

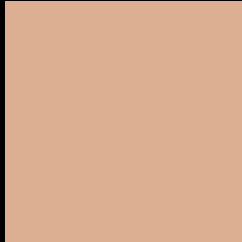
Large Text (above 18pt) WCAG AA × Fail

Any Text WCAG AA × Fail

Large Text (above 18pt) WCAG AAA × Fail

Any Text WCAG AAA × Fail

# Black Background



This preview shows how the Decimal color 14462867 looks on a black background.

## Color Contrast Check

Large Text (above 18pt) WCAG AA ✓ Pass

Any Text WCAG AA ✓ Pass

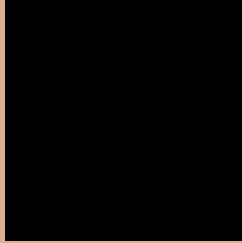
Large Text (above 18pt) WCAG AAA ✓ Pass

Any Text WCAG AAA ✓ Pass

If you want to check with other color combinations, try the [Color Contrast Checker](#).



## Decimal 14462867 Background



This preview shows how black text looks on a background with the Decimal color 14462867.



This preview shows how white text looks on a background with the Decimal color 14462867.

# Color Blindness Simulation

Color vision deficiency is a very complex topic, and I could not describe the different causes any better than Wikipedia does, so if you want to learn more, you should check out their [article about color blindness](#).

## Dichromacy



**Original Color**  
14462867

**Protanopia**  
12826775

**Deuteranopia**  
14135699



**Tritanopia**  
14723767

# Trichromacy



**Original Color**  
14462867

**Protanomaly**  
13415830

**Deuteranomaly**  
14266515

**Tritanomaly**  
14658730

# Monochromacy



**Original Color**  
14462867

**Achromatopsia**  
12171705

**Achromatomaly**  
13022635

# CSS Examples

## Text

The CSS property to change the color of the text to Decimal 14462867 is called "color". The color property can be set on classes, ids or directly on the HTML element.

This example shows how text in the color #DCAF93 looks like.

```
.text, #text, p{  
    color:#DCAF93  
}
```

If you want to add a text shadow in that color use the text-shadow property, you can generate a text shadow directly with our [CSS Text Shadow Generator](#).

Here you see how black text with a 4 pixel #DCAF93 colored shadow looks like.

```
.shadow{ text-shadow: 4px 4px 2px #DCAF93
}
```

## Border

The CSS property to change the border of an element to Decimal 14462867 is called "border". The border property can be set on classes, ids or directly on the HTML element.

This example shows the color as border, it can be applied via the CSS property "border" or "border-color".

```
.border, #border, table{ border:4px solid
#DCAF93 }
```

If only the border color should be changed use the property `border-color`.

```
.border{ border-color:#DCAF93 }
```

If you want to add a box shadow in that color use:

Here you see how a box with a 4 pixel #DCAF93 colored shadow looks like.

```
.boxshadow{ -moz-box-shadow:4px 4px 4px  
4px #DCAF93; -webkit-box-shadow:4px 4px  
4px 4px #DCAF93; box-shadow:4px 4px 4px  
4px #DCAF93 }
```

# Background

The CSS property to change the background color of an element to Decimal 14462867 is called "background". The background property can be set on classes, ids or directly on the HTML element.

```
.background, #background, body{  
background:#DCAF93 }
```

If only the background color should be changed can be used:

```
.background{ background-color:#DCAF93 }
```

This example shows the color as background, it is applied via the CSS property "background".

To optimize and compress your CSS code, you can use our [online CSS compressor and optimizer](#) based on csstidy. If you want to create a linear or radial gradient as background or border, check our [CSS Gradient Generator](#).



Hey! You found this booklet interesting? Support Converting Colors with the new Membership Option!

The pro membership hides all ads, plus gives you double the colors in the color bucket, and more awesome pro features!

**[Learn more, Memberships starting at \\$2.50/m!](#)**

**Follow me  
on Twitter!**

@ConvertingColor