

Converting Colors

Decimal(14463113)

Have a look what the booklet for
Decimal(14463113) contains.

Decimal(14463113)	3
<i>Conversions</i>	4
<i>Details</i>	6
<i>Harmonies</i>	11
<i>Previews</i>	23
<i>Color Blindness Simulation</i>	26
<i>CSS Examples</i>	29

Color

Decimal(14463113)

Conversions

Conversions Part 1

Format	Color
Hex	DCB089
RGB	220, 176, 137
RGB Percent	86%, 69%, 54%
CMY	0.1373, 0.3098, 0.4627
CMYK	0.00, 0.20, 0.38, 0.14
HSL	28°, 54%, 70%
HSV	28°, 38%, 86%
XYZ	49.5559, 48.0725, 30.3339
YIQ	184.7100, 38.7430, -2.8010

Conversions

Conversions Part 2

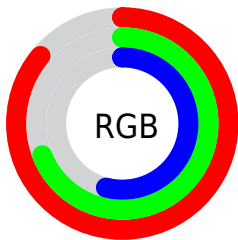
Format	Color
R_{YB}	220, 211, 137
Decimal	14463113
CIE Lab	74.87, 10.75, 26.05
CIE LCh	75, 28.179, 67.585
Yxy	48.0725, 0.3873, 0.3757
Android (android.graphics.Color)	4292653193 (0xFFDCB089)
YUV	184.7100, -23.5210, 30.9493
Hunter-Lab	69.3343, 6.2458, 22.5945

Details

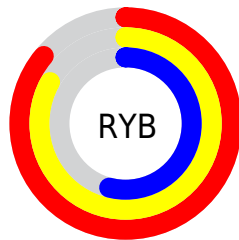
The Decimal color **14463113** is a light color, and the websafe version is hex **CC9966**. A complement of this color would be **9024988**, and the grayscale version is **12171705**.

A 20% lighter version of the original color is **16771263**, and **10714199** is the 20% darker color. If you saturate the color by 10%, you get **14460019**, and if you desaturate by 10%, it is **14466207**.

Distribution



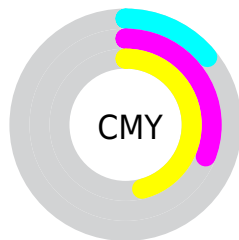
- Red (86%)
- Green (69%)
- Blue (54%)



- Red (86%)
- Yellow (83%)
- Blue (54%)



- Cyan (0%)
- Magenta (20%)
- Yellow (38%)
- Black (14%)



- Cyan (14%)
- Magenta (31%)
- Yellow (46%)

Brightness & Saturation Gradients

These gradients show how the Decimal color 14463113 changes by changing the brightness by 10 percent. The first figure shows a shift by +10% for each color and the second figure -10%.

Similar to the brightness gradients but the following saturation gradients show a change of the Decimal color 14463113 by changing the saturation by 10% instead.

 14463113

 14463113

16777215

 12555631


 16771263

 10714199

 16777179

 8938303

 16777207

 7162664

 5518355

 3874560

 2296064

 0

 14463113

 14463113

 14460019

 14466207

 14457181

 14469045

 14454087

 14472139

 14450993

 14475233

 14448155

 14478071

 14445061

 14481151

 14444288

 14483455

Harmonies

Analogous

The Analogous color harmony consists of three colors that are next to each other on the color wheel.



15378842



14463113



12892549

Triad

The Triadic color harmony groups three colors that are evenly spaced from another and form a triangle on the color wheel.



14463113



7522238



12955617

Complementary

The Complementary color scheme is a pair of colors which are on the opposite of each other on the color wheel.



14463113



9024988

Split Complementary

Split-complementary colors differ from the complementary color scheme. The scheme consists of three colors, the original color and two neighbors of the complement color.



10598635



14463113



7062999

Square

The Square scheme is like the rectangle color scheme, but the four colors are evenly spaced on the color wheel.



14463113



9094564



8306919



14657741

Rectangle

The Rectangle color scheme consists of four colors that form a rectangle on the color wheel.



14463113



11714186



8306919



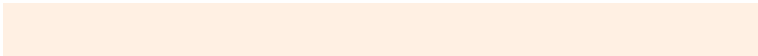
12169958

Sweetspot

The Sweet Spot groups the original color and five complimentary colors.



14463113



16773347



14453173



8419183



0



8421504

Same Dimension

The Same Dimension uses a secret algorithm to generate beautiful new colors.



14463113



16761484



14473609



7235683



11358464



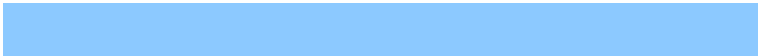
3020288

Inverse Universe

The Inverse Universe completely reimagines the original color for something new.



9024988



9226751



9014492



6514798



23725



6190

Previews

White Background



This preview shows how the Decimal color 14463113 looks on a white background.

Color Contrast Check

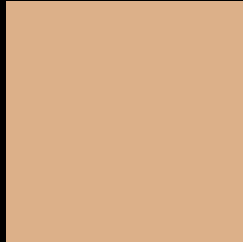
Large Text (above 18pt) WCAG AA × Fail

Any Text WCAG AA × Fail

Large Text (above 18pt) WCAG AAA × Fail

Any Text WCAG AAA × Fail

Black Background



This preview shows how the Decimal color 14463113 looks on a black background.

Color Contrast Check

Large Text (above 18pt) WCAG AA ✓ Pass

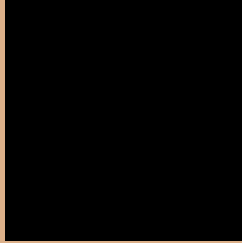
Any Text WCAG AA ✓ Pass

Large Text (above 18pt) WCAG AAA ✓ Pass

Any Text WCAG AAA ✓ Pass

If you want to check with other color combinations, try the [Color Contrast Checker](#).

Decimal 14463113 Background



This preview shows how black text looks on a background with the Decimal color 14463113.



This preview shows how white text looks on a background with the Decimal color 14463113.

Color Blindness Simulation

Color vision deficiency is a very complex topic, and I could not describe the different causes any better than Wikipedia does, so if you want to learn more, you should check out their [article about color blindness](#).

Dichromacy



Original Color
14463113

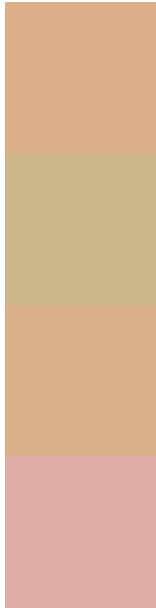
Protanopia
12957837

Deuteranopia
14332297



Tritanopia
14789303

Trichromacy



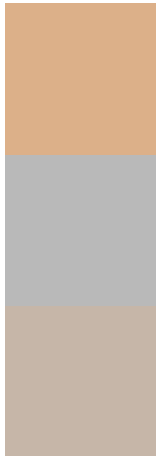
Original Color
14463113

Protanomaly
13481356

Deuteranomaly
14397833

Tritanomaly
14658726

Monochromacy



Original Color
14463113

Achromatopsia
12171705

Achromatomaly
13022888

CSS Examples

Text

The CSS property to change the color of the text to Decimal 14463113 is called "color". The color property can be set on classes, ids or directly on the HTML element.

This example shows how text in the color #DCB089 looks like.

```
.text, #text, p{  
    color:#DCB089  
}
```

If you want to add a text shadow in that color use the text-shadow property, you can generate a text shadow directly with our [CSS Text Shadow Generator](#).

Here you see how black text with a 4 pixel #DCB089 colored shadow looks like.

```
.shadow{ text-shadow: 4px 4px 2px #DCB089
}
```

Border

The CSS property to change the border of an element to Decimal 14463113 is called "border". The border property can be set on classes, ids or directly on the HTML element.

This example shows the color as border, it can be applied via the CSS property "border" or "border-color".

```
.border, #border, table{ border:4px solid
#DCB089 }
```

If only the border color should be changed use the property `border-color`.

```
.border{ border-color:#DCB089 }
```

If you want to add a box shadow in that color use:

Here you see how a box with a 4 pixel #DCB089 colored shadow looks like.

```
.boxshadow{ -moz-box-shadow:4px 4px 4px  
4px #DCB089; -webkit-box-shadow:4px 4px  
4px 4px #DCB089; box-shadow:4px 4px 4px  
4px #DCB089 }
```

Background

The CSS property to change the background color of an element to Decimal 14463113 is called "background". The background property can be set on classes, ids or directly on the HTML element.

```
.background, #background, body{  
background:#DCB089 }
```

If only the background color should be changed can be used:

```
.background{ background-color:#DCB089 }
```

This example shows the color as background, it is applied via the CSS property "background".

To optimize and compress your CSS code, you can use our [online CSS compressor and optimizer](#) based on csstidy. If you want to create a linear or radial gradient as background or border, check our [CSS Gradient Generator](#).

Hey! You found this booklet interesting? Support Converting Colors with the new Membership Option!

The pro membership hides all ads, plus gives you double the colors in the color bucket, and more awesome pro features!

[Learn more, Memberships starting at \\$2.50/m!](#)

**Follow me
on Twitter!**

@ConvertingColor