

Converting Colors

Decimal(14463168)

Have a look what the booklet for
Decimal(14463168) contains.

Decimal(14463168)	3
<i>Conversions</i>	4
<i>Details</i>	6
<i>Harmonies</i>	11
<i>Previews</i>	23
<i>Color Blindness Simulation</i>	26
<i>CSS Examples</i>	29

Color

Decimal(14463168)

Conversions

Conversions Part 1

Format	Color
Hex	DCB0C0
RGB	220, 176, 192
RGB Percent	86%, 69%, 75%
CMY	0.1373, 0.3098, 0.2471
CMYK	0.00, 0.20, 0.13, 0.14
HSL	338°, 39%, 78%
HSV	338°, 20%, 86%
XYZ	54.5550, 50.0721, 56.6587
YIQ	190.9800, 21.0880, 14.3040

Conversions

Conversions Part 2

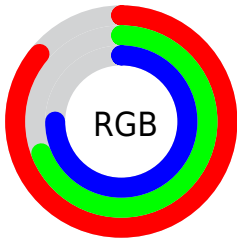
Format	Color
R _Y B	220, 176, 192
Decimal	14463168
CIE Lab	76.11, 18.49, -2.05
CIE LCh	76, 18.602, 353.673
Yxy	50.0721, 0.3383, 0.3105
Android (android.graphics.Color)	4292653248 (0xFFDCB0C0)
YUV	190.9800, 0.5029, 25.4505
Hunter-Lab	70.7616, 13.7850, 2.0598

Details

The Decimal color **14463168** is a light color, and the websafe version is hex **CC9999**. A complement of this color would be **11590860**, and the grayscale version is **12566463**.

A 20% lighter version of the original color is **16771320**, and **10845067** is the 20% darker color. If you saturate the color by 10%, you get **14457522**, and if you desaturate by 10%, it is **14468814**.

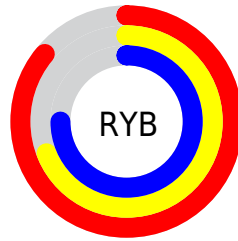
Distribution



Red (86%)

Green (69%)

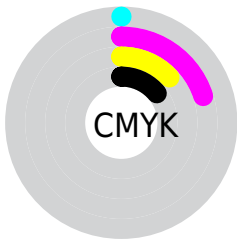
Blue (75%)



Red (86%)

Yellow (69%)

Blue (75%)

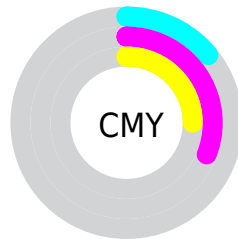


Cyan (0%)

Magenta (20%)

Yellow (13%)

Black (14%)



Cyan (14%)

Magenta (31%)

Yellow (25%)

Brightness & Saturation Gradients

These gradients show how the Decimal color 14463168 changes by changing the brightness by 10 percent. The first figure shows a shift by +10% for each color and the second figure -10%.

Similar to the brightness gradients but the following saturation gradients show a change of the Decimal color 14463168 by changing the saturation by 10% instead.

 14463168

 14463168

16777215

 12621221

 16771320

 10845067

 9069169

 7359065

 5714753

 4136235

 2623255

 327680

 0

 14463168

 14463168

 14457522

 14468814

 14451876

 14474460

 14446230

 14480106

 14440584

 14483448

 14434938

 14483455

 14429292

 14423646

 14418000

Harmonies

Analogous

The Analogous color harmony consists of three colors that are next to each other on the color wheel.



13611984



14463168



14725295

Triad

The Triadic color harmony groups three colors that are evenly spaced from another and form a triangle on the color wheel.



14463168



12238748



9683927

Complementary

The Complementary color scheme is a pair of colors which are on the opposite of each other on the color wheel.



14463168



11590860

Split Complementary

Split-complementary colors differ from the complementary color scheme. The scheme consists of three colors, the original color and two neighbors of the complement color.



9356745



14463168



10994599

Square

The Square scheme is like the rectangle color scheme, but the four colors are evenly spaced on the color wheel.



14463168



13482394



9881015



10796765

Rectangle

The Rectangle color scheme consists of four colors that form a rectangle on the color wheel.



14463168



14529189



9881015



9487571

Sweetspot

The Sweet Spot groups the original color and five complimentary colors.



14463168



16773365



13414620



8419194



0



8421504

Same Dimension

The Same Dimension uses a secret algorithm to generate beautiful new colors.



14463168



16761560



14464688



7234407



11337791



3014673

Inverse Universe

The Inverse Universe completely reimagines the original color for something new.



14463168



16761560



11589340



7234407



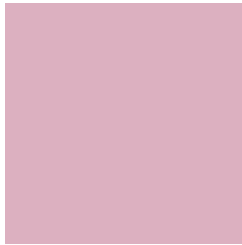
11337791



3014673

Previews

White Background



This preview shows how the Decimal color 14463168 looks on a white background.

Color Contrast Check

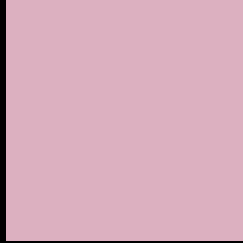
Large Text (above 18pt) WCAG AA × Fail

Any Text WCAG AA × Fail

Large Text (above 18pt) WCAG AAA × Fail

Any Text WCAG AAA × Fail

Black Background



This preview shows how the Decimal color 14463168 looks on a black background.

Color Contrast Check

Large Text (above 18pt) WCAG AA ✓ Pass

Any Text WCAG AA ✓ Pass

Large Text (above 18pt) WCAG AAA ✓ Pass

Any Text WCAG AAA ✓ Pass

If you want to check with other color combinations, try the [Color Contrast Checker](#).

Decimal 14463168 Background



This preview shows how black text looks on a background with the Decimal color 14463168.

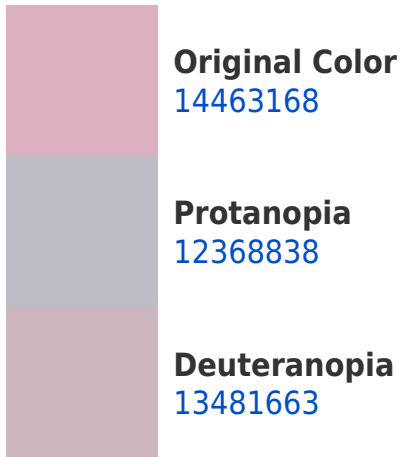



This preview shows how white text looks on a background with the Decimal color 14463168.

Color Blindness Simulation

Color vision deficiency is a very complex topic, and I could not describe the different causes any better than Wikipedia does, so if you want to learn more, you should check out their [article about color blindness](#).

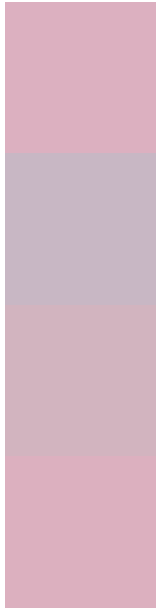
Dichromacy





Tritanopia
14463166

Trichromacy



Original Color
14463168

Protanomaly
13154244

Deuteranomaly
13808831

Tritanomaly
14463167

Monochromacy



Original Color
14463168

Achromatopsia
12566463

Achromatomaly
13286079

CSS Examples

Text

The CSS property to change the color of the text to Decimal 14463168 is called "color". The color property can be set on classes, ids or directly on the HTML element.

This example shows how text in the color #DCB0C0 looks like.

```
.text, #text, p{  
    color:#DCB0C0  
}
```

If you want to add a text shadow in that color use the text-shadow property, you can generate a text shadow directly with our [CSS Text Shadow Generator](#).

Here you see how black text with a 4 pixel #DCB0C0 colored shadow looks like.

```
.shadow{ text-shadow: 4px 4px 2px #DCB0C0
}
```

Border

The CSS property to change the border of an element to Decimal 14463168 is called "border". The border property can be set on classes, ids or directly on the HTML element.

This example shows the color as border, it can be applied via the CSS property "border" or "border-color".

```
.border, #border, table{ border:4px solid
#DCB0C0 }
```

If only the border color should be changed use the property `border-color`.

```
.border{ border-color:#DCB0C0 }
```

If you want to add a box shadow in that color use:

Here you see how a box with a 4 pixel #DCB0C0 colored shadow looks like.

```
.boxshadow{ -moz-box-shadow:4px 4px 4px  
4px #DCB0C0; -webkit-box-shadow:4px 4px  
4px 4px #DCB0C0; box-shadow:4px 4px 4px  
4px #DCB0C0 }
```

Background

The CSS property to change the background color of an element to Decimal 14463168 is called "background". The background property can be set on classes, ids or directly on the HTML element.

```
.background, #background, body{  
background:#DCB0C0 }
```

If only the background color should be changed can be used:

```
.background{ background-color:#DCB0C0 }
```

This example shows the color as background, it is applied via the CSS property "background".

To optimize and compress your CSS code, you can use our [online CSS compressor and optimizer](#) based on csstidy. If you want to create a linear or radial gradient as background or border, check our [CSS Gradient Generator](#).

Hey! You found this booklet interesting? Support Converting Colors with the new Membership Option!

The pro membership hides all ads, plus gives you double the colors in the color bucket, and more awesome pro features!

[Learn more, Memberships starting at \\$2.50/m!](#)

**Follow me
on Twitter!**

@ConvertingColor