

# Converting Colors

Decimal(14463912)

Have a look what the booklet for  
Decimal(14463912) contains.

<b>Decimal(14463912)</b> .....	3
<i><b>Conversions</b></i> .....	4
<i><b>Details</b></i> .....	6
<i><b>Harmonies</b></i> .....	11
<i><b>Previews</b></i> .....	23
<i><b>Color Blindness Simulation</b></i> .....	26
<i><b>CSS Examples</b></i> .....	29

# **Color**

**Decimal(14463912)**

# Conversions

## Conversions Part 1

Format	Color
Hex	DCB3A8
RGB	220, 179, 168
RGB Percent	86%, 70%, 66%
CMY	0.1373, 0.2980, 0.3412
CMYK	0.00, 0.19, 0.24, 0.14
HSL	13°, 43%, 76%
HSV	13°, 24%, 86%
XYZ	52.7032, 50.2830, 43.9736
YIQ	190.0050, 27.9670, 5.2710

# Conversions

## Conversions Part 2

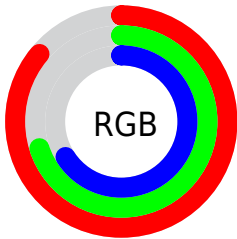
Format	Color
RYB	220, 182, 168
Decimal	14463912
CIELab	76.24, 13.18, 11.21
CIELCh	76, 17.297, 40.378
Yxy	50.2830, 0.3586, 0.3422
Android (android.graphics.Color)	4292653992 (0xFFDCB3A8)
YUV	190.0050, -10.8485, 26.3056
Hunter-Lab	70.9105, 8.5741, 12.8699

# Details

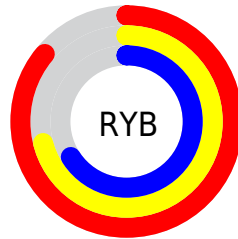
The Decimal color **14463912** is a light color, and the websafe version is hex **CC9999**. A complement of this color would be **11063772**, and the grayscale version is **12500670**.

A 20% lighter version of the original color is **16772063**, and **10780276** is the 20% darker color. If you saturate the color by 10%, you get **14459538**, and if you desaturate by 10%, it is **14468286**.

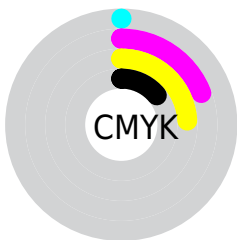
# Distribution



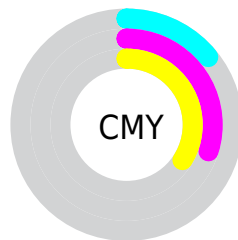
- Red (86%)
- Green (70%)
- Blue (66%)



- Red (86%)
- Yellow (71%)
- Blue (66%)



- Cyan (0%)
- Magenta (19%)
- Yellow (24%)
- Black (14%)



- Cyan (14%)
- Magenta (30%)
- Yellow (34%)

# Brightness & Saturation Gradients

These gradients show how the Decimal color 14463912 changes by changing the brightness by 10 percent. The first figure shows a shift by +10% for each color and the second figure -10%.

Similar to the brightness gradients but the following saturation gradients show a change of the Decimal color 14463912 by changing the saturation by 10% instead.



 14463912

 14463912

16777215

 12621966

 16772063

 10780276

16777212

 9004379

 7294276

 5649966

 4071705

 2624256

 0

 14463912

 14463912

 14459538

 14468286

 14454908

 14472916

 14450534

 14477290

 14446160

 14481663

 14441530

 14483455

 14437156

 14432782

 14429952

# Harmonies

## Analogous

The Analogous color harmony consists of three colors that are next to each other on the color wheel.



14528951



14463912



13809566

# Triad

The Triadic color harmony groups three colors that are evenly spaced from another and form a triangle on the color wheel.



14463912



10470577



11648219

# Complementary

The Complementary color scheme is a pair of colors which are on the opposite of each other on the color wheel.



14463912



11063772

# Split Complementary

Split-complementary colors differ from the complementary color scheme. The scheme consists of three colors, the original color and two neighbors of the complement color.



10404314



14463912



9749953

# Square

The Square scheme is like the rectangle color scheme, but the four colors are evenly spaced on the color wheel.



14463912



11649443



9684176



13022932

# Rectangle

The Rectangle color scheme consists of four colors that form a rectangle on the color wheel.



14463912



13220764



9684176



11255260

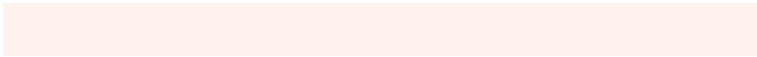


# Sweetspot

The Sweet Spot groups the original color and five complimentary colors.



14463912



16773613



14461138



8419189



0



8421504



# Same Dimension

The Same Dimension uses a secret algorithm to generate beautiful new colors.



14463912



16762808



14470312



7234915



11347200



3017216

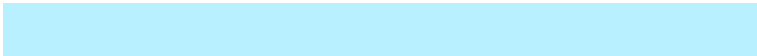


# Inverse Universe

The Inverse Universe completely reimagines the original color for something new.



11063772



12120319



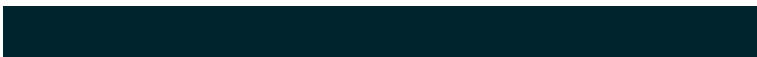
11057372



6515566



35245



9262



# Previews

## White Background



This preview shows how the Decimal color 14463912 looks on a white background.

## Color Contrast Check

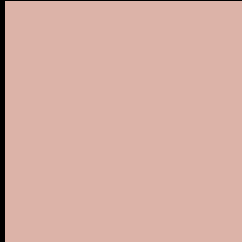
Large Text (above 18pt) WCAG AA × Fail

Any Text WCAG AA × Fail

Large Text (above 18pt) WCAG AAA × Fail

Any Text WCAG AAA × Fail

# Black Background



This preview shows how the Decimal color 14463912 looks on a black background.

## Color Contrast Check

Large Text (above 18pt) WCAG AA ✓ Pass

Any Text WCAG AA ✓ Pass

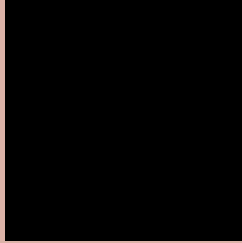
Large Text (above 18pt) WCAG AAA ✓ Pass

Any Text WCAG AAA ✓ Pass

If you want to check with other color combinations, try the [Color Contrast Checker](#).



## Decimal 14463912 Background



This preview shows how black text looks on a background with the Decimal color 14463912.




This preview shows how white text looks on a background with the Decimal color 14463912.

# Color Blindness Simulation

Color vision deficiency is a very complex topic, and I could not describe the different causes any better than Wikipedia does, so if you want to learn more, you should check out their [article about color blindness](#).

## Dichromacy





**Tritanopia**  
14594237

# Trichromacy



**Original Color**  
14463912

**Protanomaly**  
13416875

**Deuteranomaly**  
14202024

**Tritanomaly**  
14528949

# Monochromacy



**Original Color**  
14463912

**Achromatopsia**  
12500670

**Achromatomaly**  
13220534

# CSS Examples

## Text

The CSS property to change the color of the text to Decimal 14463912 is called "color". The color property can be set on classes, ids or directly on the HTML element.

This example shows how text in the color #DCB3A8 looks like.

```
.text, #text, p{  
  color:#DCB3A8  
}
```

If you want to add a text shadow in that color use the text-shadow property, you can generate a text shadow directly with our [CSS Text Shadow Generator](#).

Here you see how black text with a 4 pixel #DCB3A8 colored shadow looks like.

```
.shadow{ text-shadow: 4px 4px 2px #DCB3A8  
}
```

## Border

The CSS property to change the border of an element to Decimal 14463912 is called "border". The border property can be set on classes, ids or directly on the HTML element.

This example shows the color as border, it can be applied via the CSS property "border" or "border-color".

```
.border, #border, table{ border:4px solid  
#DCB3A8 }
```

If only the border color should be changed use the property `border-color`.

```
.border{ border-color:#DCB3A8 }
```

If you want to add a box shadow in that color use:

Here you see how a box with a 4 pixel #DCB3A8 colored shadow looks like.

```
.boxshadow{ -moz-box-shadow:4px 4px 4px  
4px #DCB3A8; -webkit-box-shadow:4px 4px  
4px 4px #DCB3A8; box-shadow:4px 4px 4px  
4px #DCB3A8 }
```

# Background

The CSS property to change the background color of an element to Decimal 14463912 is called "background". The background property can be set on classes, ids or directly on the HTML element.

```
.background, #background, body{  
background:#DCB3A8 }
```

If only the background color should be changed can be used:

```
.background{ background-color:#DCB3A8 }
```

This example shows the color as background, it is applied via the CSS property "background".

To optimize and compress your CSS code, you can use our [online CSS compressor and optimizer](#) based on csstidy. If you want to create a linear or radial gradient as background or border, check our [CSS Gradient Generator](#).



Hey! You found this booklet interesting? Support Converting Colors with the new Membership Option!

The pro membership hides all ads, plus gives you double the colors in the color bucket, and more awesome pro features!

**[Learn more, Memberships starting at \\$2.50/m!](#)**

**Follow me  
on Twitter!**

@ConvertingColor