

# Converting Colors

Decimal(14464404)

Have a look what the booklet for  
Decimal(14464404) contains.

<b>Decimal(14464404)</b> .....	3
<i><b>Conversions</b></i> .....	4
<i><b>Details</b></i> .....	6
<i><b>Harmonies</b></i> .....	11
<i><b>Previews</b></i> .....	23
<i><b>Color Blindness Simulation</b></i> .....	26
<i><b>CSS Examples</b></i> .....	29

# **Color**

**Decimal(14464404)**

# Conversions

## Conversions Part 1

<b>Format</b>	<b>Color</b>
Hex	DCB594
RGB	220, 181, 148
RGB Percent	86%, 71%, 58%
CMY	0.1373, 0.2902, 0.4196
CMYK	0.00, 0.18, 0.33, 0.14
HSL	27°, 51%, 72%
HSV	27°, 33%, 86%
XYZ	51.3844, 50.4015, 35.0372
YIQ	188.8990, 33.8370, -1.9950

# Conversions

## Conversions Part 2

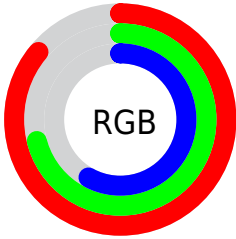
<b>Format</b>	<b>Color</b>
<b>R<sub>YB</sub></b>	220, 209, 148
Decimal	14464404
CIE <sub>Lab</sub>	76.32, 9.41, 22.11
CIE <sub>LCh</sub>	76, 24.030, 66.949
Yxy	50.4015, 0.3756, 0.3684
Android (android.graphics.Color)	4292654484 (0xFFDCB594)
YUV	188.8990, -20.1632, 27.2756
Hunter-Lab	70.9940, 4.9560, 20.4348

# Details

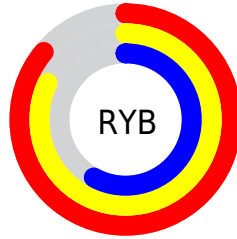
The Decimal color **14464404** is a light color, and the websafe version is hex **FFCC99**. A complement of this color would be **9747420**, and the grayscale version is **12434877**.

A 20% lighter version of the original color is **16772554**, and **10780769** is the 20% darker color. If you saturate the color by 10%, you get **14461310**, and if you desaturate by 10%, it is **14467498**.

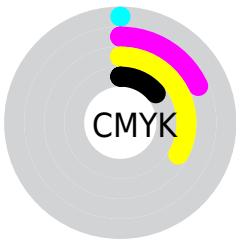
# Distribution



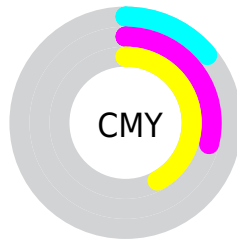
- Red (86%)
- Green (71%)
- Blue (58%)



- Red (86%)
- Yellow (82%)
- Blue (58%)



- Cyan (0%)
- Magenta (18%)
- Yellow (33%)
- Black (14%)



- Cyan (14%)
- Magenta (29%)
- Yellow (42%)

# Brightness & Saturation Gradients

These gradients show how the Decimal color 14464404 changes by changing the brightness by 10 percent. The first figure shows a shift by +10% for each color and the second figure -10%.

Similar to the brightness gradients but the following saturation gradients show a change of the Decimal color 14464404 by changing the saturation by 10% instead.



 14464404

 14464404

16777215

 12622458

 16772554

 10780769

 16777190

 9004873

 7229234

 5584925

 3941125

 2428416

 0

 14464404

 14464404

 14461310

 14467498

 14458216

 14470592

 14455122

 14473686

 14452028

 14476780

 14448934

 14479871

 14446096

 14482943

 14443776

 14483455

# Harmonies

## Analogous

The Analogous color harmony consists of three colors that are next to each other on the color wheel.



15249315



14464404



13155472

# Triad

The Triadic color harmony groups three colors that are evenly spaced from another and form a triangle on the color wheel.



14464404



8636865



13022688

# Complementary

The Complementary color scheme is a pair of colors which are on the opposite of each other on the color wheel.



14464404



9747420

# Split Complementary

Split-complementary colors differ from the complementary color scheme. The scheme consists of three colors, the original color and two neighbors of the complement color.



11123944



14464404



8308950

# Square

The Square scheme is like the rectangle color scheme, but the four colors are evenly spaced on the color wheel.



14464404



9881514



9290724



14528462

# Rectangle

The Rectangle color scheme consists of four colors that form a rectangle on the color wheel.



14464404



12042644



9290724



12433380

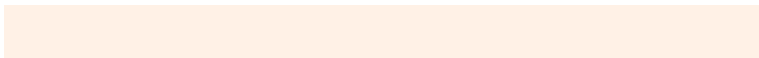


# Sweetspot

The Sweet Spot groups the original color and five complimentary colors.



14464404



16773606



14455996



8419184



0



8421504



# Same Dimension

The Same Dimension uses a secret algorithm to generate beautiful new colors.



14464404



16763292



14473364



7235683



11357952



3020032

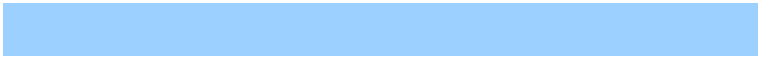


# Inverse Universe

The Inverse Universe completely reimagines the original color for something new.



9747420



10277375



9738460



6515054



24237



6446



# Previews

## White Background



This preview shows how the Decimal color 14464404 looks on a white background.

## Color Contrast Check

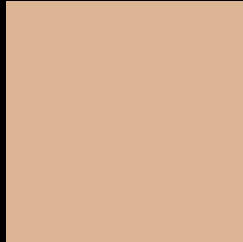
Large Text (above 18pt) WCAG AA × Fail

Any Text WCAG AA × Fail

Large Text (above 18pt) WCAG AAA × Fail

Any Text WCAG AAA × Fail

# Black Background



This preview shows how the Decimal color 14464404 looks on a black background.

## Color Contrast Check

Large Text (above 18pt) WCAG AA ✓ Pass

Any Text WCAG AA ✓ Pass

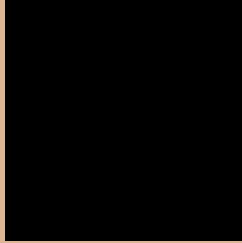
Large Text (above 18pt) WCAG AAA ✓ Pass

Any Text WCAG AAA ✓ Pass

If you want to check with other color combinations, try the [Color Contrast Checker](#).



## Decimal 14464404 Background



This preview shows how black text looks on a background with the Decimal color 14464404.



This preview shows how white text looks on a background with the Decimal color 14464404.

# Color Blindness Simulation

Color vision deficiency is a very complex topic, and I could not describe the different causes any better than Wikipedia does, so if you want to learn more, you should check out their [article about color blindness](#).

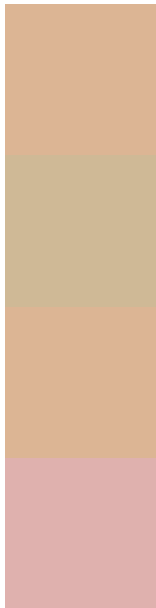
## Dichromacy





**Tritanopia**  
14725053

# Trichromacy



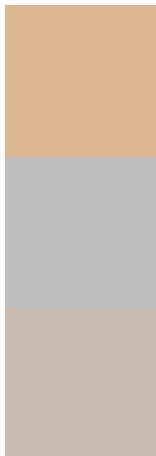
**Original Color**  
14464404

**Protanomaly**  
13613462

**Deuteranomaly**  
14464404

**Tritanomaly**  
14660014

# Monochromacy



**Original Color**  
14464404

**Achromatopsia**  
12434877

**Achromatomaly**  
13154990

# CSS Examples

## Text

The CSS property to change the color of the text to Decimal 14464404 is called "color". The color property can be set on classes, ids or directly on the HTML element.

This example shows how text in the color #DCB594 looks like.

```
.text, #text, p{  
    color:#DCB594  
}
```

If you want to add a text shadow in that color use the text-shadow property, you can generate a text shadow directly with our [CSS Text Shadow Generator](#).

Here you see how black text with a 4 pixel #DCB594 colored shadow looks like.

```
.shadow{ text-shadow: 4px 4px 2px #DCB594
}
```

## Border

The CSS property to change the border of an element to Decimal 14464404 is called "border". The border property can be set on classes, ids or directly on the HTML element.

This example shows the color as border, it can be applied via the CSS property "border" or "border-color".

```
.border, #border, table{ border:4px solid
#DCB594 }
```

If only the border color should be changed use the property `border-color`.

```
.border{ border-color:#DCB594 }
```

If you want to add a box shadow in that color use:

Here you see how a box with a 4 pixel #DCB594 colored shadow looks like.

```
.boxshadow{ -moz-box-shadow:4px 4px 4px  
4px #DCB594; -webkit-box-shadow:4px 4px  
4px 4px #DCB594; box-shadow:4px 4px 4px  
4px #DCB594 }
```

# Background

The CSS property to change the background color of an element to Decimal 14464404 is called "background". The background property can be set on classes, ids or directly on the HTML element.

```
.background, #background, body{  
background:#DCB594 }
```

If only the background color should be changed can be used:

```
.background{ background-color:#DCB594 }
```

This example shows the color as background, it is applied via the CSS property "background".

To optimize and compress your CSS code, you can use our [online CSS compressor and optimizer](#) based on csstidy. If you want to create a linear or radial gradient as background or border, check our [CSS Gradient Generator](#).



Hey! You found this booklet interesting? Support Converting Colors with the new Membership Option!

The pro membership hides all ads, plus gives you double the colors in the color bucket, and more awesome pro features!

**[Learn more, Memberships starting at \\$2.50/m!](#)**

**Follow me  
on Twitter!**

@ConvertingColor