

Converting Colors

Decimal(14464927)

Have a look what the booklet for
Decimal(14464927) contains.

Decimal(14464927)	3
<i>Conversions</i>	4
<i>Details</i>	6
<i>Harmonies</i>	11
<i>Previews</i>	23
<i>Color Blindness Simulation</i>	26
<i>CSS Examples</i>	29

Color

Decimal(14464927)

Conversions

Conversions Part 1

Format	Color
Hex	DCB79F
RGB	220, 183, 159
RGB Percent	86%, 72%, 62%
CMY	0.1373, 0.2824, 0.3765
CMYK	0.00, 0.17, 0.28, 0.14
HSL	24°, 47%, 74%
HSV	24°, 28%, 86%
XYZ	52.7067, 51.5858, 39.9800
YIQ	191.3270, 29.7560, 0.3800

Conversions

Conversions Part 2

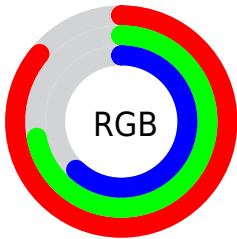
Format	Color
R _Y B	220, 199, 159
Decimal	14464927
CIE Lab	77.03, 9.78, 17.19
CIE LCh	77, 19.773, 60.354
Yxy	51.5858, 0.3653, 0.3576
Android (android.graphics.Color)	4292655007 (0xFFDCB79F)
YUV	191.3270, -15.9372, 25.1462
Hunter-Lab	71.8233, 5.2995, 17.2729

Details

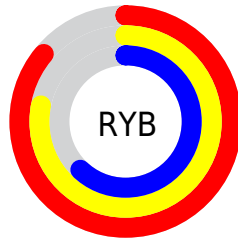
The Decimal color **14464927** is a light color, and the websafe version is hex **FFCCCC**. A complement of this color would be **10470620**, and the grayscale version is **12566463**.

A 20% lighter version of the original color is **16773078**, and **10781292** is the 20% darker color. If you saturate the color by 10%, you get **14461577**, and if you desaturate by 10%, it is **14468277**.

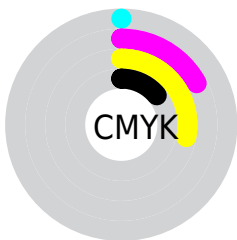
Distribution



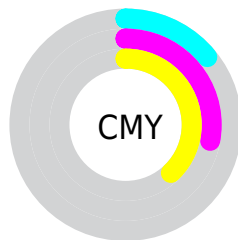
- Red (86%)
- Green (72%)
- Blue (62%)



- Red (86%)
- Yellow (78%)
- Blue (62%)



- Cyan (0%)
- Magenta (17%)
- Yellow (28%)
- Black (14%)



- Cyan (14%)
- Magenta (28%)
- Yellow (38%)

Brightness & Saturation Gradients

These gradients show how the Decimal color 14464927 changes by changing the brightness by 10 percent. The first figure shows a shift by +10% for each color and the second figure -10%.

Similar to the brightness gradients but the following saturation gradients show a change of the Decimal color 14464927 by changing the saturation by 10% instead.

 14464927

 14464927

16777215

 12622981

 16773078

 10781292

 16777202

 9005395

 7295292

 5650982

 4006929

 2560000

 0

 14464927

 14464927

 14461577

 14468277

 14457971

 14471883

 14454621

 14475233

 14451271

 14478583

 14447665

 14482175

 14444315

 14483455

 14440965

 14440192

Harmonies

Analogous

The Analogous color harmony consists of three colors that are next to each other on the color wheel.



14988205



14464927



13417882

Triad

The Triadic color harmony groups three colors that are evenly spaced from another and form a triangle on the color wheel.



14464927



9685438



12761566

Complementary

The Complementary color scheme is a pair of colors which are on the opposite of each other on the color wheel.



14464927



10470620

Split Complementary

Split-complementary colors differ from the complementary color scheme. The scheme consists of three colors, the original color and two neighbors of the complement color.



11190498



14464927



9291984

Square

The Square scheme is like the rectangle color scheme, but the four colors are evenly spaced on the color wheel.



14464927



10733484



9815517



14070993

Rectangle

The Rectangle color scheme consists of four colors that form a rectangle on the color wheel.



14464927



12566940



9815517



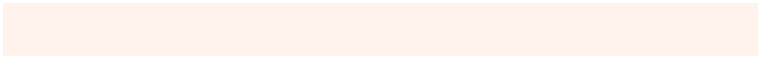
12238048

Sweetspot

The Sweet Spot groups the original color and five complimentary colors.



14464927



16774123



14458821



8419443



0



8421504

Same Dimension

The Same Dimension uses a secret algorithm to generate beautiful new colors.



14464927



16764075



14472607



7235427



11355136



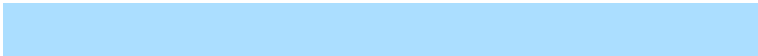
3019264

Inverse Universe

The Inverse Universe completely reimagines the original color for something new.



10470620



11263743



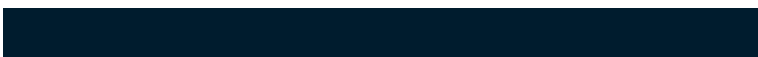
10462940



6515054



27053



7214

Previews

White Background



This preview shows how the Decimal color 14464927 looks on a white background.

Color Contrast Check

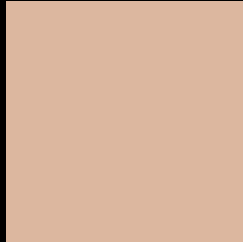
Large Text (above 18pt) WCAG AA × Fail

Any Text WCAG AA × Fail

Large Text (above 18pt) WCAG AAA × Fail

Any Text WCAG AAA × Fail

Black Background



This preview shows how the Decimal color 14464927 looks on a black background.

Color Contrast Check

Large Text (above 18pt) WCAG AA ✓ Pass

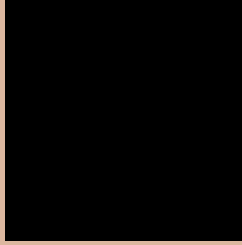
Any Text WCAG AA ✓ Pass

Large Text (above 18pt) WCAG AAA ✓ Pass

Any Text WCAG AAA ✓ Pass

If you want to check with other color combinations, try the [Color Contrast Checker](#).

Decimal 14464927 Background



This preview shows how black text looks on a background with the Decimal color 14464927.



This preview shows how white text looks on a background with the Decimal color 14464927.

Color Blindness Simulation

Color vision deficiency is a very complex topic, and I could not describe the different causes any better than Wikipedia does, so if you want to learn more, you should check out their [article about color blindness](#).

Dichromacy





Tritanopia
14725824

Trichromacy



Original Color
14464927

Protanomaly
13613985

Deuteranomaly
14464927

Tritanomaly
14660788

Monochromacy



Original Color
14464927

Achromatopsia
12566463

Achromatomaly
13286579

CSS Examples

Text

The CSS property to change the color of the text to Decimal 14464927 is called "color". The color property can be set on classes, ids or directly on the HTML element.

This example shows how text in the color #DCB79F looks like.

```
.text, #text, p{  
    color:#DCB79F  
}
```

If you want to add a text shadow in that color use the text-shadow property, you can generate a text shadow directly with our [CSS Text Shadow Generator](#).

Here you see how black text with a 4 pixel #DCB79F colored shadow looks like.

```
.shadow{ text-shadow: 4px 4px 2px #DCB79F
}
```

Border

The CSS property to change the border of an element to Decimal 14464927 is called "border". The border property can be set on classes, ids or directly on the HTML element.

This example shows the color as border, it can be applied via the CSS property "border" or "border-color".

```
.border, #border, table{ border:4px solid
#DCB79F }
```

If only the border color should be changed use the property `border-color`.

```
.border{ border-color:#DCB79F }
```

If you want to add a box shadow in that color use:

Here you see how a box with a 4 pixel #DCB79F colored shadow looks like.

```
.boxshadow{ -moz-box-shadow:4px 4px 4px  
4px #DCB79F; -webkit-box-shadow:4px 4px  
4px 4px #DCB79F; box-shadow:4px 4px 4px  
4px #DCB79F }
```

Background

The CSS property to change the background color of an element to Decimal 14464927 is called "background". The background property can be set on classes, ids or directly on the HTML element.

```
.background, #background, body{  
background:#DCB79F }
```

If only the background color should be changed can be used:

```
.background{ background-color:#DCB79F }
```

This example shows the color as background, it is applied via the CSS property "background".

To optimize and compress your CSS code, you can use our [online CSS compressor and optimizer](#) based on csstidy. If you want to create a linear or radial gradient as background or border, check our [CSS Gradient Generator](#).

Hey! You found this booklet interesting? Support Converting Colors with the new Membership Option!

The pro membership hides all ads, plus gives you double the colors in the color bucket, and more awesome pro features!

[Learn more, Memberships starting at \\$2.50/m!](#)

**Follow me
on Twitter!**

@ConvertingColor