

Converting Colors

Decimal(14464940)

Have a look what the booklet for
Decimal(14464940) contains.

Decimal(14464940)	3
<i>Conversions</i>	4
<i>Details</i>	6
<i>Harmonies</i>	11
<i>Previews</i>	23
<i>Color Blindness Simulation</i>	26
<i>CSS Examples</i>	29

Color

Decimal(14464940)

Conversions

Conversions Part 1

Format	Color
Hex	DCB7AC
RGB	220, 183, 172
RGB Percent	86%, 72%, 67%
CMY	0.1373, 0.2824, 0.3255
CMYK	0.00, 0.17, 0.22, 0.14
HSL	14°, 41%, 77%
HSV	14°, 22%, 86%
XYZ	53.8951, 52.0612, 46.2380
YIQ	192.8090, 25.5830, 4.4230

Conversions

Conversions Part 2

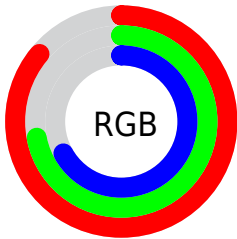
Format	Color
R _Y B	220, 186, 172
Decimal	14464940
CIE Lab	77.32, 11.62, 10.56
CIE LCh	77, 15.702, 42.279
Yxy	52.0612, 0.3541, 0.3421
Android (android.graphics.Color)	4292655020 (0xFFDCB7AC)
YUV	192.8090, -10.2588, 23.8465
Hunter-Lab	72.1534, 7.0623, 12.5127

Details

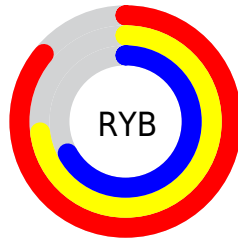
The Decimal color **14464940** is a light color, and the websafe version is hex **FFCCCC**. A complement of this color would be **11325916**, and the grayscale version is **12698049**.

A 20% lighter version of the original color is **16773091**, and **10781304** is the 20% darker color. If you saturate the color by 10%, you get **14460566**, and if you desaturate by 10%, it is **14469314**.

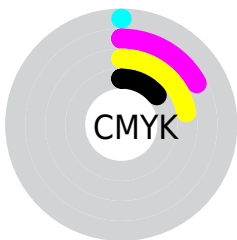
Distribution



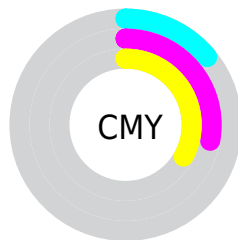
- Red (86%)
- Green (72%)
- Blue (67%)



- Red (86%)
- Yellow (73%)
- Blue (67%)



- Cyan (0%)
- Magenta (17%)
- Yellow (22%)
- Black (14%)



- Cyan (14%)
- Magenta (28%)
- Yellow (33%)

Brightness & Saturation Gradients

These gradients show how the Decimal color 14464940 changes by changing the brightness by 10 percent. The first figure shows a shift by +10% for each color and the second figure -10%.

Similar to the brightness gradients but the following saturation gradients show a change of the Decimal color 14464940 by changing the saturation by 10% instead.

 14464940

 14464940

16777215

 12622993

 16773091

 10781304

 9070943

 7360839

 5716529

 4072476

 2625282

 0

 14464940

 14464940

 14460566

 14469314

 14456192

 14473688

 14451818

 14478062

 14447444

 14482431

 14443070

 14483455

 14438696

 14434322

 14430720

Harmonies

Analogous

The Analogous color harmony consists of three colors that are next to each other on the color wheel.



14595513



14464940



13876132

Triad

The Triadic color harmony groups three colors that are evenly spaced from another and form a triangle on the color wheel.



14464940



10799030



12041947

Complementary

The Complementary color scheme is a pair of colors which are on the opposite of each other on the color wheel.



14464940



11325916

Split Complementary

Split-complementary colors differ from the complementary color scheme. The scheme consists of three colors, the original color and two neighbors of the complement color.



10863578



14464940



10209477

Square

The Square scheme is like the rectangle color scheme, but the four colors are evenly spaced on the color wheel.



14464940



11846825



10208978



13220309

Rectangle

The Rectangle color scheme consists of four colors that form a rectangle on the color wheel.



14464940



13287074



10208978



11649244

Sweetspot

The Sweet Spot groups the original color and five complimentary colors.



14464940



16773613



14462162



8419445



0



8421504

Same Dimension

The Same Dimension uses a secret algorithm to generate beautiful new colors.



14464940



16764093



14470828



7234915



11347968



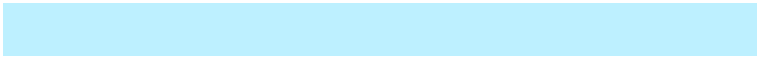
3017472

Inverse Universe

The Inverse Universe completely reimagines the original color for something new.



11325916



12447999



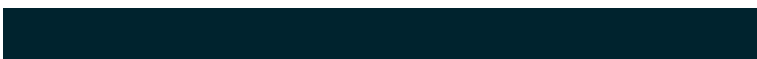
11320028



6515566



34477



9006

Previews

White Background



This preview shows how the Decimal color 14464940 looks on a white background.

Color Contrast Check

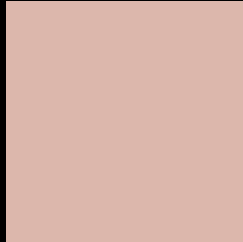
Large Text (above 18pt) WCAG AA × Fail

Any Text WCAG AA × Fail

Large Text (above 18pt) WCAG AAA × Fail

Any Text WCAG AAA × Fail

Black Background



This preview shows how the Decimal color 14464940 looks on a black background.

Color Contrast Check

Large Text (above 18pt) WCAG AA ✓ Pass

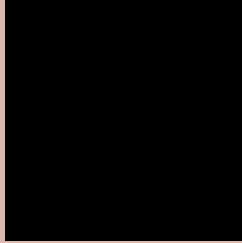
Any Text WCAG AA ✓ Pass

Large Text (above 18pt) WCAG AAA ✓ Pass

Any Text WCAG AAA ✓ Pass

If you want to check with other color combinations, try the [Color Contrast Checker](#).

Decimal 14464940 Background



This preview shows how black text looks on a background with the Decimal color 14464940.




This preview shows how white text looks on a background with the Decimal color 14464940.

Color Blindness Simulation

Color vision deficiency is a very complex topic, and I could not describe the different causes any better than Wikipedia does, so if you want to learn more, you should check out their [article about color blindness](#).

Dichromacy





Tritanopia
14660802

Trichromacy



Original Color
14464940

Protanomaly
13548463

Deuteranomaly
14334124

Tritanomaly
14595514

Monochromacy



Original Color
14464940

Achromatopsia
12698049

Achromatomaly
13352377

CSS Examples

Text

The CSS property to change the color of the text to Decimal 14464940 is called "color". The color property can be set on classes, ids or directly on the HTML element.

This example shows how text in the color #DCB7AC looks like.

```
.text, #text, p{  
    color:#DCB7AC  
}
```

If you want to add a text shadow in that color use the text-shadow property, you can generate a text shadow directly with our [CSS Text Shadow Generator](#).

Here you see how black text with a 4 pixel #DCB7AC colored shadow looks like.

```
.shadow{ text-shadow: 4px 4px 2px #DCB7AC
}
```

Border

The CSS property to change the border of an element to Decimal 14464940 is called "border". The border property can be set on classes, ids or directly on the HTML element.

This example shows the color as border, it can be applied via the CSS property "border" or "border-color".

```
.border, #border, table{ border:4px solid
#DCB7AC }
```

If only the border color should be changed use the property `border-color`.

```
.border{ border-color:#DCB7AC }
```

If you want to add a box shadow in that color use:

Here you see how a box with a 4 pixel #DCB7AC colored shadow looks like.

```
.boxshadow{ -moz-box-shadow:4px 4px 4px  
4px #DCB7AC; -webkit-box-shadow:4px 4px  
4px 4px #DCB7AC; box-shadow:4px 4px 4px  
4px #DCB7AC }
```

Background

The CSS property to change the background color of an element to Decimal 14464940 is called "background". The background property can be set on classes, ids or directly on the HTML element.

```
.background, #background, body{  
background:#DCB7AC }
```

If only the background color should be changed can be used:

```
.background{ background-color:#DCB7AC }
```

This example shows the color as background, it is applied via the CSS property "background".

To optimize and compress your CSS code, you can use our [online CSS compressor and optimizer](#) based on csstidy. If you want to create a linear or radial gradient as background or border, check our [CSS Gradient Generator](#).

Hey! You found this booklet interesting? Support Converting Colors with the new Membership Option!

The pro membership hides all ads, plus gives you double the colors in the color bucket, and more awesome pro features!

[Learn more, Memberships starting at \\$2.50/m!](#)

**Follow me
on Twitter!**

@ConvertingColor