

# Converting Colors

Decimal(14465435)

Have a look what the booklet for  
Decimal(14465435) contains.

<b>Decimal(14465435)</b> .....	3
<i><b>Conversions</b></i> .....	4
<i><b>Details</b></i> .....	6
<i><b>Harmonies</b></i> .....	11
<i><b>Previews</b></i> .....	23
<i><b>Color Blindness Simulation</b></i> .....	26
<i><b>CSS Examples</b></i> .....	29

# **Color**

**Decimal(14465435)**

# Conversions

## Conversions Part 1

<b>Format</b>	<b>Color</b>
Hex	DCB99B
RGB	220, 185, 155
RGB Percent	86%, 73%, 61%
CMY	0.1373, 0.2745, 0.3922
CMYK	0.00, 0.16, 0.30, 0.14
HSL	28°, 48%, 74%
HSV	28°, 30%, 86%
XYZ	52.7806, 52.2801, 38.3196
YIQ	192.0450, 30.4900, -1.9100

# Conversions

## Conversions Part 2

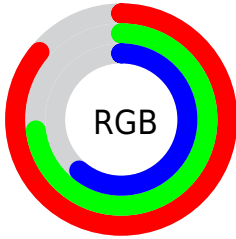
Format	Color
R <sub>Y</sub> B	220, 211, 155
Decimal	14465435
CIE Lab	77.45, 8.18, 19.91
CIE LCh	77, 21.528, 67.663
Yxy	52.2801, 0.3681, 0.3646
Android (android.graphics.Color)	4292655515 (0xFFDCB99B)
YUV	192.0450, -18.2632, 24.5165
Hunter-Lab	72.3050, 3.7661, 19.1915

# Details

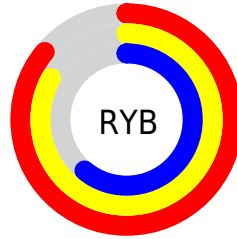
The Decimal color **14465435** is a light color, and the websafe version is hex **FFCC99**. A complement of this color would be **10206940**, and the grayscale version is **12632256**.

A 20% lighter version of the original color is **16773586**, and **10781800** is the 20% darker color. If you saturate the color by 10%, you get **14462341**, and if you desaturate by 10%, it is **14468529**.

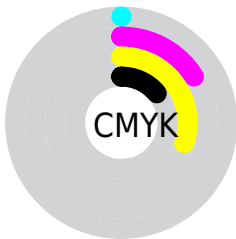
# Distribution



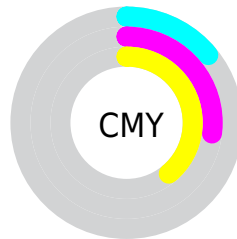
- Red (86%)
- Green (73%)
- Blue (61%)



- Red (86%)
- Yellow (83%)
- Blue (61%)



- Cyan (0%)
- Magenta (16%)
- Yellow (30%)
- Black (14%)



- Cyan (14%)
- Magenta (27%)
- Yellow (39%)

# Brightness & Saturation Gradients

These gradients show how the Decimal color 14465435 changes by changing the brightness by 10 percent. The first figure shows a shift by +10% for each color and the second figure -10%.

Similar to the brightness gradients but the following saturation gradients show a change of the Decimal color 14465435 by changing the saturation by 10% instead.



 14465435

 14465435

16777215

 12623489

 16773586

 10781800

 16777198

 9005903

 7295800

 5585954

 4007437

 2494976

 0

 14465435

 14465435

 14462341

 14468529

 14459247

 14471623

 14456153

 14474717

 14453315

 14477555

 14450221

 14480639

 14447127

 14483455

 14444033

 14444032

# Harmonies

## Analogous

The Analogous color harmony consists of three colors that are next to each other on the color wheel.



15185064



14465435



13222040

# Triad

The Triadic color harmony groups three colors that are evenly spaced from another and form a triangle on the color wheel.



14465435



9292740



13220319

# Complementary

The Complementary color scheme is a pair of colors which are on the opposite of each other on the color wheel.



14465435



10206940

# Split Complementary

Split-complementary colors differ from the complementary color scheme. The scheme consists of three colors, the original color and two neighbors of the complement color.



11517927



14465435



9030359

# Square

The Square scheme is like the rectangle color scheme, but the four colors are evenly spaced on the color wheel.



14465435



10341040



9946596



14595023

# Rectangle

The Rectangle color scheme consists of four colors that form a rectangle on the color wheel.



14465435



12305564



9946596



12696547

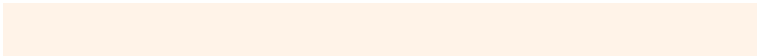


# Sweetspot

The Sweet Spot groups the original color and five complimentary colors.



14465435



16774120



14457791



8419441



0



8421504



# Same Dimension

The Same Dimension uses a secret algorithm to generate beautiful new colors.



14465435



16764838



14473627



7235683



11358208



3020032

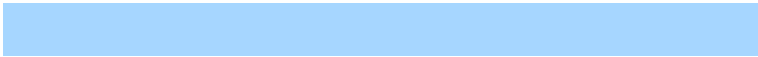


# Inverse Universe

The Inverse Universe completely reimagines the original color for something new.



10206940



10934015



10198748



6515054



23981



6446



# Previews

## White Background



This preview shows how the Decimal color 14465435 looks on a white background.

## Color Contrast Check

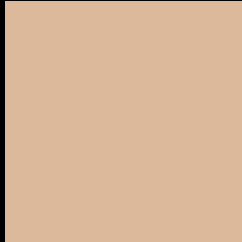
Large Text (above 18pt) WCAG AA × Fail

Any Text WCAG AA × Fail

Large Text (above 18pt) WCAG AAA × Fail

Any Text WCAG AAA × Fail

# Black Background



This preview shows how the Decimal color 14465435 looks on a black background.

## Color Contrast Check

Large Text (above 18pt) WCAG AA ✓ Pass

Any Text WCAG AA ✓ Pass

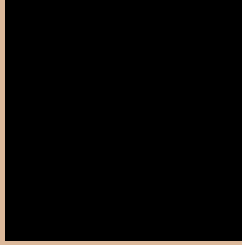
Large Text (above 18pt) WCAG AAA ✓ Pass

Any Text WCAG AAA ✓ Pass

If you want to check with other color combinations, try the [Color Contrast Checker](#).



## Decimal 14465435 Background



This preview shows how black text looks on a background with the Decimal color 14465435.




This preview shows how white text looks on a background with the Decimal color 14465435.

# Color Blindness Simulation

Color vision deficiency is a very complex topic, and I could not describe the different causes any better than Wikipedia does, so if you want to learn more, you should check out their [article about color blindness](#).

## Dichromacy





**Tritanopia**  
14726338

# Trichromacy



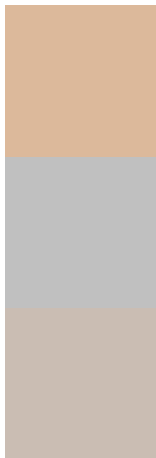
**Original Color**  
14465435

**Protanomaly**  
13745565

**Deuteranomaly**  
14596251

**Tritanomaly**  
14661300

# Monochromacy



**Original Color**  
14465435

**Achromatopsia**  
12632256

**Achromatomaly**  
13286835

# CSS Examples

## Text

The CSS property to change the color of the text to Decimal 14465435 is called "color". The color property can be set on classes, ids or directly on the HTML element.

This example shows how text in the color #DCB99B looks like.

```
.text, #text, p{  
    color:#DCB99B  
}
```

If you want to add a text shadow in that color use the text-shadow property, you can generate a text shadow directly with our [CSS Text Shadow Generator](#).

Here you see how black text with a 4 pixel #DCB99B colored shadow looks like.

```
.shadow{ text-shadow: 4px 4px 2px #DCB99B
}
```

## Border

The CSS property to change the border of an element to Decimal 14465435 is called "border". The border property can be set on classes, ids or directly on the HTML element.

This example shows the color as border, it can be applied via the CSS property "border" or "border-color".

```
.border, #border, table{ border:4px solid
#DCB99B }
```

If only the border color should be changed use the property `border-color`.

```
.border{ border-color:#DCB99B }
```

If you want to add a box shadow in that color use:

Here you see how a box with a 4 pixel #DCB99B colored shadow looks like.

```
.boxshadow{ -moz-box-shadow:4px 4px 4px  
4px #DCB99B; -webkit-box-shadow:4px 4px  
4px 4px #DCB99B; box-shadow:4px 4px 4px  
4px #DCB99B }
```

# Background

The CSS property to change the background color of an element to Decimal 14465435 is called "background". The background property can be set on classes, ids or directly on the HTML element.

```
.background, #background, body{  
background:#DCB99B }
```

If only the background color should be changed can be used:

```
.background{ background-color:#DCB99B }
```

This example shows the color as background, it is applied via the CSS property "background".

To optimize and compress your CSS code, you can use our [online CSS compressor and optimizer](#) based on csstidy. If you want to create a linear or radial gradient as background or border, check our [CSS Gradient Generator](#).



Hey! You found this booklet interesting? Support Converting Colors with the new Membership Option!

The pro membership hides all ads, plus gives you double the colors in the color bucket, and more awesome pro features!

**[Learn more, Memberships starting at \\$2.50/m!](#)**

**Follow me  
on Twitter!**

@ConvertingColor