

Converting Colors

Decimal(14466236)

Have a look what the booklet for
Decimal(14466236) contains.

Decimal(14466236)	3
<i>Conversions</i>	4
<i>Details</i>	6
<i>Harmonies</i>	11
<i>Previews</i>	23
<i>Color Blindness Simulation</i>	26
<i>CSS Examples</i>	29

Color

Decimal(14466236)

Conversions

Conversions Part 1

Format	Color
Hex	DCBCBC
RGB	220, 188, 188
RGB Percent	86%, 74%, 74%
CMY	0.1373, 0.2627, 0.2627
CMYK	0.00, 0.15, 0.15, 0.14
HSL	0°, 31%, 80%
HSV	0°, 15%, 86%
XYZ	56.5755, 54.8129, 55.1751
YIQ	197.5680, 19.0720, 6.7840

Conversions

Conversions Part 2

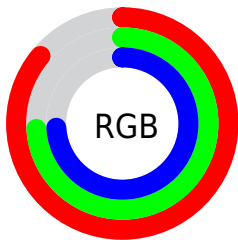
Format	Color
R _Y B	220, 188, 188
Decimal	14466236
CIE Lab	78.93, 11.40, 4.23
CIE LCh	79, 12.161, 20.347
Yxy	54.8129, 0.3397, 0.3291
Android (android.graphics.Color)	4292656316 (0xFFDCBCBC)
YUV	197.5680, -4.7170, 19.6729
Hunter-Lab	74.0358, 6.8409, 7.6392

Details

The Decimal color **14466236** is a light color, and the websafe version is hex **FFCCCC**. A complement of this color would be **12377308**, and the grayscale version is **13027014**.

A 20% lighter version of the original color is **16774388**, and **10848135** is the 20% darker color. If you saturate the color by 10%, you get **14460582**, and if you desaturate by 10%, it is **14471890**.

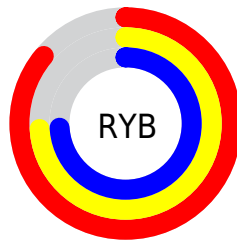
Distribution



Red (86%)

Green (74%)

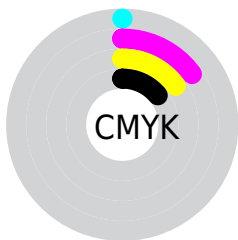
Blue (74%)



Red (86%)

Yellow (74%)

Blue (74%)

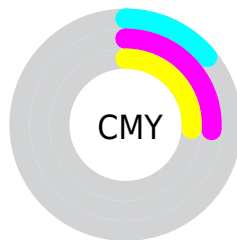


Cyan (0%)

Magenta (15%)

Yellow (15%)

Black (14%)



Cyan (14%)

Magenta (26%)

Yellow (26%)

Brightness & Saturation Gradients

These gradients show how the Decimal color 14466236 changes by changing the brightness by 10 percent. The first figure shows a shift by +10% for each color and the second figure -10%.

Similar to the brightness gradients but the following saturation gradients show a change of the Decimal color 14466236 by changing the saturation by 10% instead.

 14466236

 14466236

16777215

 12624289

 16774388

 10848135

 9071982

 7361877

 5783102

 4204584

 2691860

 1048576

 0

 14466236

 14466236

 14460582

 14471890

 14454928

 14477544

 14449274

 14483198

 14443620

 14483455

 14437966

 14432312

 14426658

 14421004

 14417920

Harmonies

Analogous

The Analogous color harmony consists of three colors that are next to each other on the color wheel.



14204104



14466236



14270130

Triad

The Triadic color harmony groups three colors that are evenly spaced from another and form a triangle on the color wheel.



14466236



12044469



11781849

Complementary

The Complementary color scheme is a pair of colors which are on the opposite of each other on the color wheel.



14466236



12377308

Split Complementary

Split-complementary colors differ from the complementary color scheme. The scheme consists of three colors, the original color and two neighbors of the complement color.



11192788



14466236



11324095

Square

The Square scheme is like the rectangle color scheme, but the four colors are evenly spaced on the color wheel.



14466236



12895662



10996427



12698328

Rectangle

The Rectangle color scheme consists of four colors that form a rectangle on the color wheel.



14466236



13942958



10996427



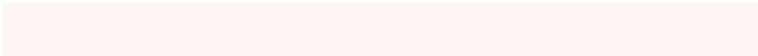
11519960

Sweetspot

The Sweet Spot groups the original color and five complimentary colors.



14466236



16774645



14466268



8419705



0



8421504

Same Dimension

The Same Dimension uses a secret algorithm to generate beautiful new colors.



14466236



16766164



14470332



7234403



11337728



3014656

Inverse Universe

The Inverse Universe completely reimagines the original color for something new.



12377308



13959167



12373212



6516334



44461



11822

Previews

White Background



This preview shows how the Decimal color 14466236 looks on a white background.

Color Contrast Check

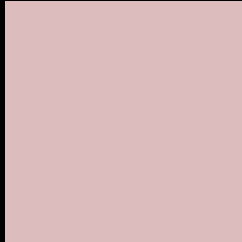
Large Text (above 18pt) WCAG AA × Fail

Any Text WCAG AA × Fail

Large Text (above 18pt) WCAG AAA × Fail

Any Text WCAG AAA × Fail

Black Background



This preview shows how the Decimal color 14466236 looks on a black background.

Color Contrast Check

Large Text (above 18pt) WCAG AA ✓ Pass

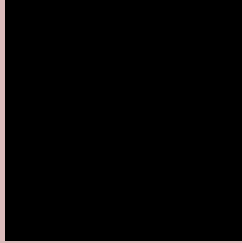
Any Text WCAG AA ✓ Pass

Large Text (above 18pt) WCAG AAA ✓ Pass

Any Text WCAG AAA ✓ Pass

If you want to check with other color combinations, try the [Color Contrast Checker](#).

Decimal 14466236 Background



This preview shows how black text looks on a background with the Decimal color 14466236.




This preview shows how white text looks on a background with the Decimal color 14466236.

Color Blindness Simulation

Color vision deficiency is a very complex topic, and I could not describe the different causes any better than Wikipedia does, so if you want to learn more, you should check out their [article about color blindness](#).

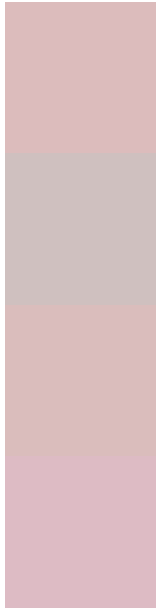
Dichromacy





Tritanopia
14596809

Trichromacy



Original Color
14466236

Protanomaly
13615295

Deuteranomaly
14335420

Tritanomaly
14531524

Monochromacy



Original Color
14466236

Achromatopsia
13027014

Achromatomaly
13550274

CSS Examples

Text

The CSS property to change the color of the text to Decimal 14466236 is called "color". The color property can be set on classes, ids or directly on the HTML element.

This example shows how text in the color #DCBCBC looks like.

```
.text, #text, p{  
    color:#DCBCBC  
}
```

If you want to add a text shadow in that color use the text-shadow property, you can generate a text shadow directly with our [CSS Text Shadow Generator](#).

Here you see how black text with a 4 pixel #DCBCBC colored shadow looks like.

```
.shadow{ text-shadow: 4px 4px 2px #DCBCBC
}
```

Border

The CSS property to change the border of an element to Decimal 14466236 is called "border". The border property can be set on classes, ids or directly on the HTML element.

This example shows the color as border, it can be applied via the CSS property "border" or "border-color".

```
.border, #border, table{ border:4px solid
#DCBCBC }
```

If only the border color should be changed use the property `border-color`.

```
.border{ border-color:#DCBCBC }
```

If you want to add a box shadow in that color use:

Here you see how a box with a 4 pixel #DCBCBC colored shadow looks like.

```
.boxshadow{ -moz-box-shadow:4px 4px 4px  
4px #DCBCBC; -webkit-box-shadow:4px 4px  
4px 4px #DCBCBC; box-shadow:4px 4px 4px  
4px #DCBCBC }
```

Background

The CSS property to change the background color of an element to Decimal 14466236 is called "background". The background property can be set on classes, ids or directly on the HTML element.

```
.background, #background, body{  
background:#DCBCBC }
```

If only the background color should be changed can be used:

```
.background{ background-color:#DCBCBC }
```

This example shows the color as background, it is applied via the CSS property "background".

To optimize and compress your CSS code, you can use our [online CSS compressor and optimizer](#) based on csstidy. If you want to create a linear or radial gradient as background or border, check our [CSS Gradient Generator](#).

Hey! You found this booklet interesting? Support Converting Colors with the new Membership Option!

The pro membership hides all ads, plus gives you double the colors in the color bucket, and more awesome pro features!

[Learn more, Memberships starting at \\$2.50/m!](#)

**Follow me
on Twitter!**

@ConvertingColor