

Converting Colors

Decimal(14466459)

Have a look what the booklet for
Decimal(14466459) contains.

Decimal(14466459)	3
<i>Conversions</i>	4
<i>Details</i>	6
<i>Harmonies</i>	11
<i>Previews</i>	23
<i>Color Blindness Simulation</i>	26
<i>CSS Examples</i>	29

Color

Decimal(14466459)

Conversions

Conversions Part 1

Format	Color
Hex	DCBD9B
RGB	220, 189, 155
RGB Percent	86%, 74%, 61%
CMY	0.1373, 0.2588, 0.3922
CMYK	0.00, 0.14, 0.30, 0.14
HSL	31°, 48%, 74%
HSV	31°, 30%, 86%
XYZ	53.6292, 53.9774, 38.6025
YIQ	194.3930, 29.3900, -4.0020

Conversions

Conversions Part 2

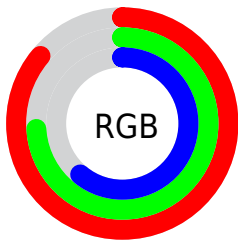
Format	Color
R_YB	214, 220, 155
Decimal	14466459
CIE Lab	78.45, 6.06, 21.29
CIE LCh	78, 22.136, 74.112
Yxy	53.9774, 0.3668, 0.3692
Android (android.graphics.Color)	4292656539 (0xFFDCBD9B)
YUV	194.3930, -19.4207, 22.4573
Hunter-Lab	73.4693, 1.7254, 20.2762

Details

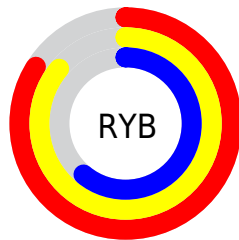
The Decimal color **14466459** is a light color, and the websafe version is hex **FFCC99**. A complement of this color would be **10205916**, and the grayscale version is **12829635**.

A 20% lighter version of the original color is **16774610**, and **10782824** is the 20% darker color. If you saturate the color by 10%, you get **14463877**, and if you desaturate by 10%, it is **14469041**.

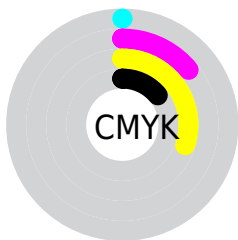
Distribution



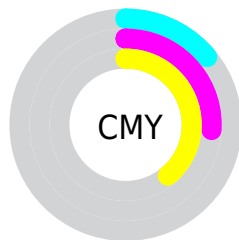
- Red (86%)
- Green (74%)
- Blue (61%)



- Red (84%)
- Yellow (86%)
- Blue (61%)



- Cyan (0%)
- Magenta (14%)
- Yellow (30%)
- Black (14%)



- Cyan (14%)
- Magenta (26%)
- Yellow (39%)

Brightness & Saturation Gradients

These gradients show how the Decimal color 14466459 changes by changing the brightness by 10 percent. The first figure shows a shift by +10% for each color and the second figure -10%.

Similar to the brightness gradients but the following saturation gradients show a change of the Decimal color 14466459 by changing the saturation by 10% instead.

 14466459

 14466459

16777215

 12624513

 16774610

 10782824

 16777198

 9006671

 7296568

 5652258

 4008205

 2495744

 0

 14466459

 14466459

 14463877

 14469041

 14461039

 14471879

 14458457

 14474461

 14455619

 14477299

 14453037

 14479871

 14450199

 14482687

 14447617

 14483455

 14447360

Harmonies

Analogous

The Analogous color harmony consists of three colors that are next to each other on the color wheel.



15316902



14466459



13157530

Triad

The Triadic color harmony groups three colors that are evenly spaced from another and form a triangle on the color wheel.



14466459



9227979



13810400

Complementary

The Complementary color scheme is a pair of colors which are on the opposite of each other on the color wheel.



14466459



10205916

Split Complementary

Split-complementary colors differ from the complementary color scheme. The scheme consists of three colors, the original color and two neighbors of the complement color.



12042730



14466459



9227486

Square

The Square scheme is like the rectangle color scheme, but the four colors are evenly spaced on the color wheel.



14466459



10145206



10340329



15054286

Rectangle

The Rectangle color scheme consists of four colors that form a rectangle on the color wheel.



14466459



12109984



10340329



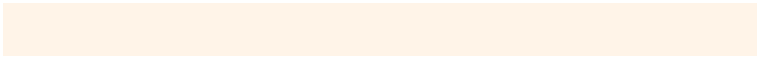
13221092

Sweetspot

The Sweet Spot groups the original color and five complimentary colors.



14466459



16774376



14457786



8419697



0



8421504

Same Dimension

The Same Dimension uses a secret algorithm to generate beautiful new colors.



14466459



16766118



14408859



7235683



11361024



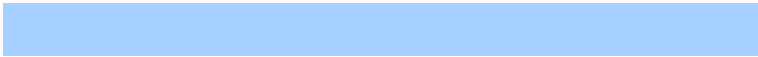
3020800

Inverse Universe

The Inverse Universe completely reimagines the original color for something new.



10205916



10932479



10263516



6514798



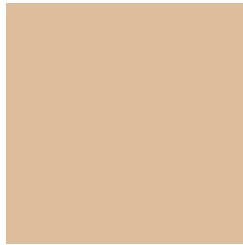
21421



5678

Previews

White Background



This preview shows how the Decimal color 14466459 looks on a white background.

Color Contrast Check

Large Text (above 18pt) WCAG AA × Fail

Any Text WCAG AA × Fail

Large Text (above 18pt) WCAG AAA × Fail

Any Text WCAG AAA × Fail

Black Background



This preview shows how the Decimal color 14466459 looks on a black background.

Color Contrast Check

Large Text (above 18pt) WCAG AA ✓ Pass

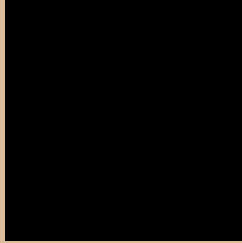
Any Text WCAG AA ✓ Pass

Large Text (above 18pt) WCAG AAA ✓ Pass

Any Text WCAG AAA ✓ Pass

If you want to check with other color combinations, try the [Color Contrast Checker](#).

Decimal 14466459 Background



This preview shows how black text looks on a background with the Decimal color 14466459.



This preview shows how white text looks on a background with the Decimal color 14466459.

Color Blindness Simulation

Color vision deficiency is a very complex topic, and I could not describe the different causes any better than Wikipedia does, so if you want to learn more, you should check out their [article about color blindness](#).

Dichromacy



Original Color
14466459

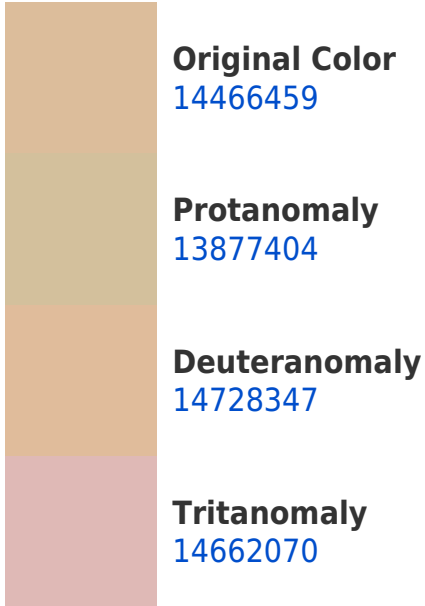
Protanopia
13550237

Deuteranopia
14859163

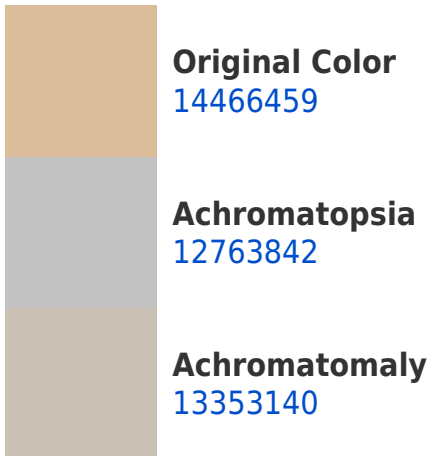


Tritanopia
14792645

Trichromacy



Monochromacy



CSS Examples

Text

The CSS property to change the color of the text to Decimal 14466459 is called "color". The color property can be set on classes, ids or directly on the HTML element.

This example shows how text in the color #DCBD9B looks like.

```
.text, #text, p{  
    color:#DCBD9B  
}
```

If you want to add a text shadow in that color use the text-shadow property, you can generate a text shadow directly with our [CSS Text Shadow Generator](#).

Here you see how black text with a 4 pixel #DCBD9B colored shadow looks like.

```
.shadow{ text-shadow: 4px 4px 2px #DCBD9B
}
```

Border

The CSS property to change the border of an element to Decimal 14466459 is called "border". The border property can be set on classes, ids or directly on the HTML element.

This example shows the color as border, it can be applied via the CSS property "border" or "border-color".

```
.border, #border, table{ border:4px solid
#DCBD9B }
```

If only the border color should be changed use the property `border-color`.

```
.border{ border-color:#DCBD9B }
```

If you want to add a box shadow in that color use:

Here you see how a box with a 4 pixel #DCBD9B colored shadow looks like.

```
.boxshadow{ -moz-box-shadow:4px 4px 4px  
4px #DCBD9B; -webkit-box-shadow:4px 4px  
4px 4px #DCBD9B; box-shadow:4px 4px 4px  
4px #DCBD9B }
```

Background

The CSS property to change the background color of an element to Decimal 14466459 is called "background". The background property can be set on classes, ids or directly on the HTML element.

```
.background, #background, body{  
background:#DCBD9B }
```

If only the background color should be changed can be used:

```
.background{ background-color:#DCBD9B }
```

This example shows the color as background, it is applied via the CSS property "background".

To optimize and compress your CSS code, you can use our [online CSS compressor and optimizer](#) based on csstidy. If you want to create a linear or radial gradient as background or border, check our [CSS Gradient Generator](#).

Hey! You found this booklet interesting? Support Converting Colors with the new Membership Option!

The pro membership hides all ads, plus gives you double the colors in the color bucket, and more awesome pro features!

[Learn more, Memberships starting at \\$2.50/m!](#)

**Follow me
on Twitter!**

@ConvertingColor