

Converting Colors

Decimal(14467006)

Have a look what the booklet for
Decimal(14467006) contains.

Decimal(14467006)	3
<i>Conversions</i>	4
<i>Details</i>	6
<i>Harmonies</i>	11
<i>Previews</i>	23
<i>Color Blindness Simulation</i>	26
<i>CSS Examples</i>	29

Color

Decimal(14467006)

Conversions

Conversions Part 1

Format	Color
Hex	DCBFBE
RGB	220, 191, 190
RGB Percent	86%, 75%, 75%
CMY	0.1373, 0.2510, 0.2549
CMYK	0.00, 0.13, 0.14, 0.14
HSL	2°, 30%, 80%
HSV	2°, 14%, 86%
XYZ	57.4403, 56.1950, 56.5345
YIQ	199.5570, 17.6050, 5.8370

Conversions

Conversions Part 2

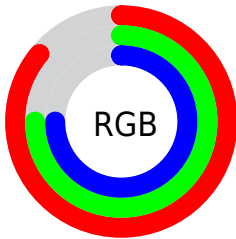
Format	Color
R _Y B	220, 191, 190
Decimal	14467006
CIE Lab	79.72, 10.12, 4.29
CIE LCh	80, 10.996, 22.983
Yxy	56.1950, 0.3375, 0.3302
Android (android.graphics.Color)	4292657086 (0xFFDCBFBE)
YUV	199.5570, -4.7116, 17.9285
Hunter-Lab	74.9633, 5.5890, 7.7600

Details

The Decimal color **14467006** is a light color, and the websafe version is hex **FFCCCC**. A complement of this color would be **12508124**, and the grayscale version is **13158600**.

A 20% lighter version of the original color is **16775158**, and **10848905** is the 20% darker color. If you saturate the color by 10%, you get **14461608**, and if you desaturate by 10%, it is **14472404**.

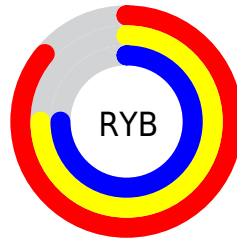
Distribution



Red (86%)

Green (75%)

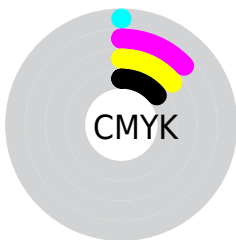
Blue (75%)



Red (86%)

Yellow (75%)

Blue (75%)

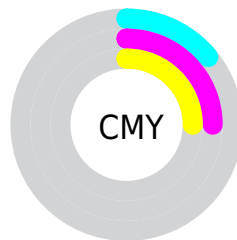


Cyan (0%)

Magenta (13%)

Yellow (14%)

Black (14%)



Cyan (14%)

Magenta (25%)

Yellow (25%)

Brightness & Saturation Gradients

These gradients show how the Decimal color 14467006 changes by changing the brightness by 10 percent. The first figure shows a shift by +10% for each color and the second figure -10%.

Similar to the brightness gradients but the following saturation gradients show a change of the Decimal color 14467006 by changing the saturation by 10% instead.

 14467006

 14467006

16777215

 12625059

 16775158

 10848905


 9072751

 7428183

 5783616

 4205098

 2692629

 1310720

 0

 14467006

 14467006

 14461608

 14472404

 14455954

 14478058

 14450556

 14483455

 14445158

 14439760

 14434106

 14428708

 14423310

 14419712

Harmonies

Analogous

The Analogous color harmony consists of three colors that are next to each other on the color wheel.



14270408



14467006



14270902

Triad

The Triadic color harmony groups three colors that are evenly spaced from another and form a triangle on the color wheel.



14467006



12241593



12109786

Complementary

The Complementary color scheme is a pair of colors which are on the opposite of each other on the color wheel.



14467006



12508124

Split Complementary

Split-complementary colors differ from the complementary color scheme. The scheme consists of three colors, the original color and two neighbors of the complement color.



11520726



14467006



11586755

Square

The Square scheme is like the rectangle color scheme, but the four colors are evenly spaced on the color wheel.



14467006



12961715



11324621



12960984

Rectangle

The Rectangle color scheme consists of four colors that form a rectangle on the color wheel.



14467006



13943730



11324621



11913433

Sweetspot

The Sweet Spot groups the original color and five complimentary colors.



14467006



16774645



14466779



8419705



0



8421504

Same Dimension

The Same Dimension uses a secret algorithm to generate beautiful new colors.



14467006



16767190



14470846



7234403



11339264



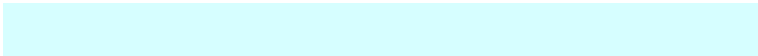
3015168

Inverse Universe

The Inverse Universe completely reimagines the original color for something new.



12508124



14089983



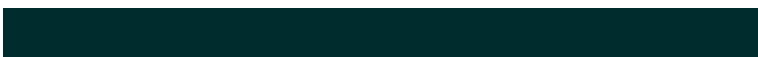
12504284



6516078



43181



11310

Previews

White Background



This preview shows how the Decimal color 14467006 looks on a white background.

Color Contrast Check

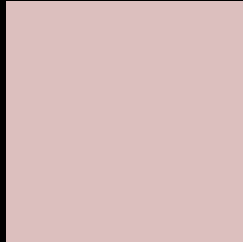
Large Text (above 18pt) WCAG AA × Fail

Any Text WCAG AA × Fail

Large Text (above 18pt) WCAG AAA × Fail

Any Text WCAG AAA × Fail

Black Background



This preview shows how the Decimal color 14467006 looks on a black background.

Color Contrast Check

Large Text (above 18pt) WCAG AA ✓ Pass

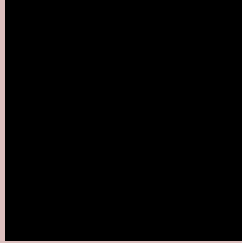
Any Text WCAG AA ✓ Pass

Large Text (above 18pt) WCAG AAA ✓ Pass

Any Text WCAG AAA ✓ Pass

If you want to check with other color combinations, try the [Color Contrast Checker](#).

Decimal 14467006 Background



This preview shows how black text looks on a background with the Decimal color 14467006.



This preview shows how white text looks on a background with the Decimal color 14467006.

Color Blindness Simulation

Color vision deficiency is a very complex topic, and I could not describe the different causes any better than Wikipedia does, so if you want to learn more, you should check out their [article about color blindness](#).


Dichromacy



Original Color
14467006

Protanopia
13288897

Deuteranopia
14467006



Tritanopia
14597580

Trichromacy



Original Color
14467006

Protanomaly
13747136

Deuteranomaly
14467006

Tritanomaly
14532295

Monochromacy



Original Color
14467006

Achromatopsia
13158600

Achromatomaly
13616580

CSS Examples

Text

The CSS property to change the color of the text to Decimal 14467006 is called "color". The color property can be set on classes, ids or directly on the HTML element.

This example shows how text in the color #DCBFBE looks like.

```
.text, #text, p{  
  color:#DCBFBE  
}
```

If you want to add a text shadow in that color use the text-shadow property, you can generate a text shadow directly with our [CSS Text Shadow Generator](#).

Here you see how black text with a 4 pixel #DCBFBE colored shadow looks like.

```
.shadow{ text-shadow: 4px 4px 2px #DCBFBE
}
```

Border

The CSS property to change the border of an element to Decimal 14467006 is called "border". The border property can be set on classes, ids or directly on the HTML element.

This example shows the color as border, it can be applied via the CSS property "border" or "border-color".

```
.border, #border, table{ border:4px solid
#DCBFBE }
```

If only the border color should be changed use the property `border-color`.

```
.border{ border-color:#DCBFBE }
```

If you want to add a box shadow in that color use:

Here you see how a box with a 4 pixel #DCBFBE colored shadow looks like.

```
.boxshadow{ -moz-box-shadow:4px 4px 4px  
4px #DCBFBE; -webkit-box-shadow:4px 4px  
4px 4px #DCBFBE; box-shadow:4px 4px 4px  
4px #DCBFBE }
```

Background

The CSS property to change the background color of an element to Decimal 14467006 is called "background". The background property can be set on classes, ids or directly on the HTML element.

```
.background, #background, body{  
background:#DCBFBE }
```

If only the background color should be changed can be used:

```
.background{ background-color:#DCBFBE }
```

This example shows the color as background, it is applied via the CSS property "background".

To optimize and compress your CSS code, you can use our [online CSS compressor and optimizer](#) based on csstidy. If you want to create a linear or radial gradient as background or border, check our [CSS Gradient Generator](#).

Hey! You found this booklet interesting? Support Converting Colors with the new Membership Option!

The pro membership hides all ads, plus gives you double the colors in the color bucket, and more awesome pro features!

[Learn more, Memberships starting at \\$2.50/m!](#)

**Follow me
on Twitter!**

@ConvertingColor