

Converting Colors

Decimal(14467779)

Have a look what the booklet for
Decimal(14467779) contains.

Decimal(14467779)	3
<i>Conversions</i>	4
<i>Details</i>	6
<i>Harmonies</i>	11
<i>Previews</i>	23
<i>Color Blindness Simulation</i>	26
<i>CSS Examples</i>	29

Color

Decimal(14467779)

Conversions

Conversions Part 1

Format	Color
Hex	DCC2C3
RGB	220, 194, 195
RGB Percent	86%, 76%, 76%
CMY	0.1373, 0.2392, 0.2353
CMYK	0.00, 0.12, 0.11, 0.14
HSL	358°, 27%, 81%
HSV	358°, 12%, 86%
XYZ	58.6573, 57.7393, 59.6830
YIQ	201.8880, 15.1750, 5.8230

Conversions

Conversions Part 2

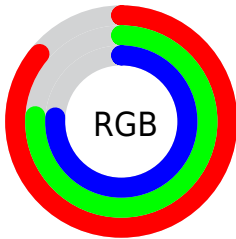
Format	Color
R _Y B	220, 194, 195
Decimal	14467779
CIE Lab	80.59, 9.34, 2.86
CIE LCh	81, 9.771, 17.030
Yxy	57.7393, 0.3331, 0.3279
Android (android.graphics.Color)	4292657859 (0xFFDCC2C3)
YUV	201.8880, -3.3958, 15.8842
Hunter-Lab	75.9864, 4.8159, 6.6216

Details

The Decimal color **14467779** is a light color, and the websafe version is hex **CCCCCC**. A complement of this color would be **12770523**, and the grayscale version is **13290186**.

A 20% lighter version of the original color is **16776188**, and **10849421** is the 20% darker color. If you saturate the color by 10%, you get **14462126**, and if you desaturate by 10%, it is **14473432**.

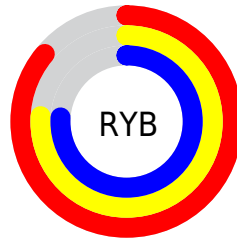
Distribution



Red (86%)

Green (76%)

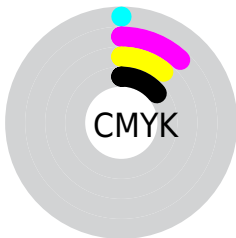
Blue (76%)



Red (86%)

Yellow (76%)

Blue (76%)

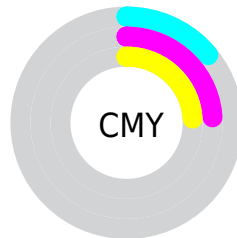


Cyan (0%)

Magenta (12%)

Yellow (11%)

Black (14%)



Cyan (14%)

Magenta (24%)

Yellow (24%)

Brightness & Saturation Gradients

These gradients show how the Decimal color 14467779 changes by changing the brightness by 10 percent. The first figure shows a shift by +10% for each color and the second figure -10%.

Similar to the brightness gradients but the following saturation gradients show a change of the Decimal color 14467779 by changing the saturation by 10% instead.

 14467779

 14467779

16777215

 12625832

 16776188

 10849421

 9073524

 7428699

 5784388

 4205870

 2758681

 1507328

 0

 14467779

 14467779

 14462126

 14473432

 14456473

 14479085

 14450820

 14483455

 14445166

 14439513

 14433860

 14428207

 14422554

 14417928

Harmonies

Analogous

The Analogous color harmony consists of three colors that are next to each other on the color wheel.



14205644



14467779



14336955

Triad

The Triadic color harmony groups three colors that are evenly spaced from another and form a triangle on the color wheel.



14467779



12569787



12241625

Complementary

The Complementary color scheme is a pair of colors which are on the opposite of each other on the color wheel.



14467779



12770523

Split Complementary

Split-complementary colors differ from the complementary color scheme. The scheme consists of three colors, the original color and two neighbors of the complement color.



11783381



14467779



11980228

Square

The Square scheme is like the rectangle color scheme, but the four colors are evenly spaced on the color wheel.



14467779



13289911



11718093



12961753

Rectangle

The Rectangle color scheme consists of four colors that form a rectangle on the color wheel.



14467779



14075319



11718093



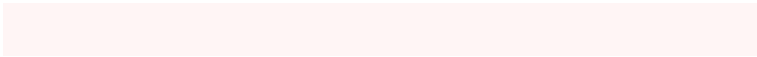
12045272

Sweetspot

The Sweet Spot groups the original color and five complimentary colors.



14467779



16774645



14402268



8419705



0



8421504

Same Dimension

The Same Dimension uses a secret algorithm to generate beautiful new colors.



14467779



16767965



14470850



7234403



11337735



3014658

Inverse Universe

The Inverse Universe completely reimagines the original color for something new.



14467779



16767965



12767452



7234403



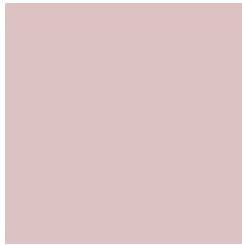
11337735



3014658

Previews

White Background



This preview shows how the Decimal color 14467779 looks on a white background.

Color Contrast Check

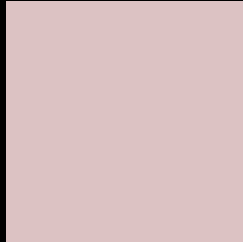
Large Text (above 18pt) WCAG AA × Fail

Any Text WCAG AA × Fail

Large Text (above 18pt) WCAG AAA × Fail

Any Text WCAG AAA × Fail

Black Background



This preview shows how the Decimal color 14467779 looks on a black background.

Color Contrast Check

Large Text (above 18pt) WCAG AA ✓ Pass

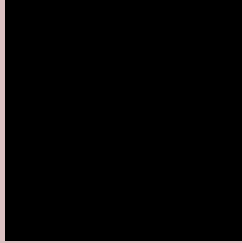
Any Text WCAG AA ✓ Pass

Large Text (above 18pt) WCAG AAA ✓ Pass

Any Text WCAG AAA ✓ Pass

If you want to check with other color combinations, try the [Color Contrast Checker](#).

Decimal 14467779 Background



This preview shows how black text looks on a background with the Decimal color 14467779.



This preview shows how white text looks on a background with the Decimal color 14467779.

Color Blindness Simulation

Color vision deficiency is a very complex topic, and I could not describe the different causes any better than Wikipedia does, so if you want to learn more, you should check out their [article about color blindness](#).


Dichromacy



Original Color
14467779

Protanopia
13420486

Deuteranopia
14533315



Tritanopia
14598351

Trichromacy



Original Color
14467779

Protanomaly
13813189

Deuteranomaly
14533315

Tritanomaly
14533067

Monochromacy



Original Color
14467779

Achromatopsia
13290186

Achromatomaly
13748167

CSS Examples

Text

The CSS property to change the color of the text to Decimal 14467779 is called "color". The color property can be set on classes, ids or directly on the HTML element.

This example shows how text in the color #DCC2C3 looks like.

```
.text, #text, p{  
  color:#DCC2C3  
}
```

If you want to add a text shadow in that color use the text-shadow property, you can generate a text shadow directly with our [CSS Text Shadow Generator](#).

Here you see how black text with a 4 pixel #DCC2C3 colored shadow looks like.

```
.shadow{ text-shadow: 4px 4px 2px #DCC2C3
}
```

Border

The CSS property to change the border of an element to Decimal 14467779 is called "border". The border property can be set on classes, ids or directly on the HTML element.

This example shows the color as border, it can be applied via the CSS property "border" or "border-color".

```
.border, #border, table{ border:4px solid
#DCC2C3 }
```

If only the border color should be changed use the property `border-color`.

```
.border{ border-color:#DCC2C3 }
```

If you want to add a box shadow in that color use:

Here you see how a box with a 4 pixel #DCC2C3 colored shadow looks like.

```
.boxshadow{ -moz-box-shadow:4px 4px 4px  
4px #DCC2C3; -webkit-box-shadow:4px 4px  
4px 4px #DCC2C3; box-shadow:4px 4px 4px  
4px #DCC2C3 }
```

Background

The CSS property to change the background color of an element to Decimal 14467779 is called "background". The background property can be set on classes, ids or directly on the HTML element.

```
.background, #background, body{  
background:#DCC2C3 }
```

If only the background color should be changed can be used:

```
.background{ background-color:#DCC2C3 }
```

This example shows the color as background, it is applied via the CSS property "background".

To optimize and compress your CSS code, you can use our [online CSS compressor and optimizer](#) based on csstidy. If you want to create a linear or radial gradient as background or border, check our [CSS Gradient Generator](#).

Hey! You found this booklet interesting? Support Converting Colors with the new Membership Option!

The pro membership hides all ads, plus gives you double the colors in the color bucket, and more awesome pro features!

[Learn more, Memberships starting at \\$2.50/m!](#)

**Follow me
on Twitter!**

@ConvertingColor