

Converting Colors

Decimal(14468016)

Have a look what the booklet for
Decimal(14468016) contains.

Decimal(14468016)	3
<i>Conversions</i>	4
<i>Details</i>	6
<i>Harmonies</i>	11
<i>Previews</i>	23
<i>Color Blindness Simulation</i>	26
<i>CSS Examples</i>	29

Color

Decimal(14468016)

Conversions

Conversions Part 1

Format	Color
Hex	DCC3B0
RGB	220, 195, 176
RGB Percent	86%, 76%, 69%
CMY	0.1373, 0.2353, 0.3098
CMYK	0.00, 0.11, 0.20, 0.14
HSL	26°, 39%, 78%
HSV	26°, 20%, 86%
XYZ	56.8668, 57.3804, 49.1526
YIQ	200.3090, 20.9990, -0.6090

Conversions

Conversions Part 2

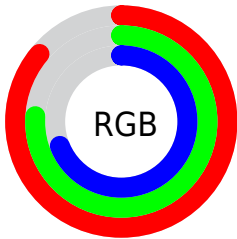
Format	Color
R_{YB}	220, 209, 176
Decimal	14468016
CIE _{Lab}	80.39, 5.83, 12.77
CIE _{LCh}	80, 14.039, 65.462
Y _{xy}	57.3804, 0.3480, 0.3512
Android (android.graphics.Color)	4292658096 (0xFFDCC3B0)
YUV	200.3090, -11.9843, 17.2690
Hunter-Lab	75.7499, 1.4408, 14.5528

Details

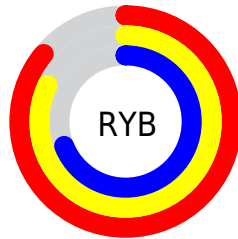
The Decimal color **14468016** is a light color, and the websafe version is hex **CCCCCC**. A complement of this color would be **11586012**, and the grayscale version is **13158600**.

A 20% lighter version of the original color is **16776424**, and **10849659** is the 20% darker color. If you saturate the color by 10%, you get **14464666**, and if you desaturate by 10%, it is **14471366**.

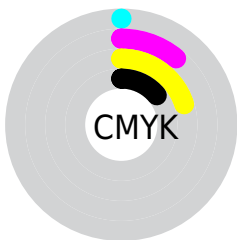
Distribution



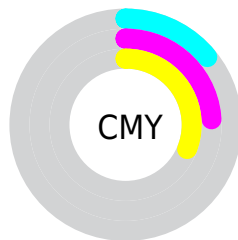
- Red (86%)
- Green (76%)
- Blue (69%)



- Red (86%)
- Yellow (82%)
- Blue (69%)



- Cyan (0%)
- Magenta (11%)
- Yellow (20%)
- Black (14%)



- Cyan (14%)
- Magenta (24%)
- Yellow (31%)

Brightness & Saturation Gradients

These gradients show how the Decimal color 14468016 changes by changing the brightness by 10 percent. The first figure shows a shift by +10% for each color and the second figure -10%.

Similar to the brightness gradients but the following saturation gradients show a change of the Decimal color 14468016 by changing the saturation by 10% instead.

 14468016

 14468016

16777215

 12626069

 16776424

 10849659

 9073763

 7363403

 5719092

 4140575

 2693383

 1048576

 0

 14468016

 14468016

 14464666

 14471366

 14461572

 14474460

 14458222

 14477810

 14455128

 14480895

 14451778

 14483455

 14448684

 14445334

 14442240

Harmonies

Analogous

The Analogous color harmony consists of three colors that are next to each other on the color wheel.



14926009



14468016



13682605

Triad

The Triadic color harmony groups three colors that are evenly spaced from another and form a triangle on the color wheel.



14468016



11063241



13485021

Complementary

The Complementary color scheme is a pair of colors which are on the opposite of each other on the color wheel.



14468016



11586012

Split Complementary

Split-complementary colors differ from the complementary color scheme. The scheme consists of three colors, the original color and two neighbors of the complement color.



12372193



14468016



10931926

Square

The Square scheme is like the rectangle color scheme, but the four colors are evenly spaced on the color wheel.



14468016



11718332



11455711



14401747

Rectangle

The Rectangle color scheme consists of four colors that form a rectangle on the color wheel.



14468016



13028016



11455711



13157855

Sweetspot

The Sweet Spot groups the original color and five complimentary colors.



14468016



16774896



14463178



8419959



0



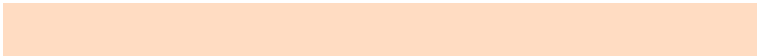
8421504

Same Dimension

The Same Dimension uses a secret algorithm to generate beautiful new colors.



14468016



16768194



14473392



7235427



11356928



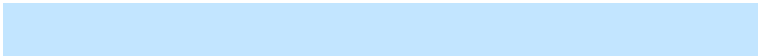
3019776

Inverse Universe

The Inverse Universe completely reimagines the original color for something new.



11586012



12772863



11580636



6515054



25517



6702

Previews

White Background



This preview shows how the Decimal color 14468016 looks on a white background.

Color Contrast Check

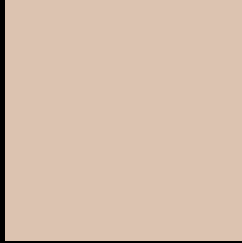
Large Text (above 18pt) WCAG AA × Fail

Any Text WCAG AA × Fail

Large Text (above 18pt) WCAG AAA × Fail

Any Text WCAG AAA × Fail

Black Background



This preview shows how the Decimal color 14468016 looks on a black background.

Color Contrast Check

Large Text (above 18pt) WCAG AA ✓ Pass

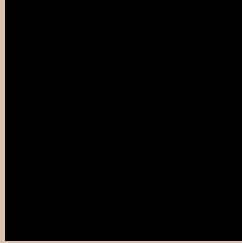
Any Text WCAG AA ✓ Pass

Large Text (above 18pt) WCAG AAA ✓ Pass

Any Text WCAG AAA ✓ Pass

If you want to check with other color combinations, try the [Color Contrast Checker](#).

Decimal 14468016 Background



This preview shows how black text looks on a background with the Decimal color 14468016.



This preview shows how white text looks on a background with the Decimal color 14468016.

Color Blindness Simulation

Color vision deficiency is a very complex topic, and I could not describe the different causes any better than Wikipedia does, so if you want to learn more, you should check out their [article about color blindness](#).

Dichromacy



Original Color
14468016

Protanopia
13682610

Deuteranopia
14926001



Tritanopia
14729166

Trichromacy



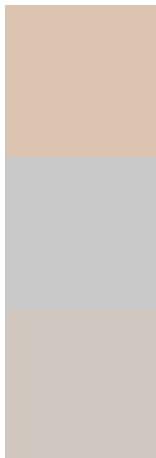
Original Color
14468016

Protanomaly
13944497

Deuteranomaly
14729649

Tritanomaly
14663875

Monochromacy



Original Color
14468016

Achromatopsia
13158600

Achromatomaly
13616831

CSS Examples

Text

The CSS property to change the color of the text to Decimal 14468016 is called "color". The color property can be set on classes, ids or directly on the HTML element.

This example shows how text in the color #DCC3B0 looks like.

```
.text, #text, p{  
    color:#DCC3B0  
}
```

If you want to add a text shadow in that color use the text-shadow property, you can generate a text shadow directly with our [CSS Text Shadow Generator](#).

Here you see how black text with a 4 pixel #DCC3B0 colored shadow looks like.

```
.shadow{ text-shadow: 4px 4px 2px #DCC3B0  
}
```

Border

The CSS property to change the border of an element to Decimal 14468016 is called "border". The border property can be set on classes, ids or directly on the HTML element.

This example shows the color as border, it can be applied via the CSS property "border" or "border-color".

```
.border, #border, table{ border:4px solid  
#DCC3B0 }
```

If only the border color should be changed use the property `border-color`.

```
.border{ border-color:#DCC3B0 }
```

If you want to add a box shadow in that color use:

Here you see how a box with a 4 pixel #DCC3B0 colored shadow looks like.

```
.boxshadow{ -moz-box-shadow:4px 4px 4px  
4px #DCC3B0; -webkit-box-shadow:4px 4px  
4px 4px #DCC3B0; box-shadow:4px 4px 4px  
4px #DCC3B0 }
```

Background

The CSS property to change the background color of an element to Decimal 14468016 is called "background". The background property can be set on classes, ids or directly on the HTML element.

```
.background, #background, body{  
background:#DCC3B0 }
```

If only the background color should be changed can be used:

```
.background{ background-color:#DCC3B0 }
```

This example shows the color as background, it is applied via the CSS property "background".

To optimize and compress your CSS code, you can use our [online CSS compressor and optimizer](#) based on csstidy. If you want to create a linear or radial gradient as background or border, check our [CSS Gradient Generator](#).

Hey! You found this booklet interesting? Support Converting Colors with the new Membership Option!

The pro membership hides all ads, plus gives you double the colors in the color bucket, and more awesome pro features!

[Learn more, Memberships starting at \\$2.50/m!](#)

**Follow me
on Twitter!**

@ConvertingColor