

# Converting Colors

Decimal(14468527)

Have a look what the booklet for  
Decimal(14468527) contains.

<b>Decimal(14468527)</b> .....	3
<i><b>Conversions</b></i> .....	4
<i><b>Details</b></i> .....	6
<i><b>Harmonies</b></i> .....	11
<i><b>Previews</b></i> .....	23
<i><b>Color Blindness Simulation</b></i> .....	26
<i><b>CSS Examples</b></i> .....	29

# **Color**

**Decimal(14468527)**

# Conversions

## Conversions Part 1

Format	Color
Hex	DCC5AF
RGB	220, 197, 175
RGB Percent	86%, 77%, 69%
CMY	0.1373, 0.2275, 0.3137
CMYK	0.00, 0.10, 0.20, 0.14
HSL	29°, 39%, 77%
HSV	29°, 20%, 86%
XYZ	57.2193, 58.2433, 48.7837
YIQ	201.3690, 20.7700, -1.9660

# Conversions

## Conversions Part 2

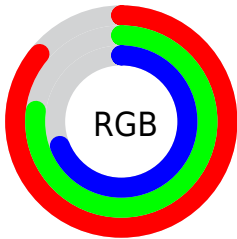
<b>Format</b>	<b>Color</b>
<b>R<sub>YB</sub></b>	220, 218, 175
Decimal	14468527
CIE <sub>Lab</sub>	80.87, 4.63, 13.99
CIE <sub>LCh</sub>	81, 14.731, 71.693
Yxy	58.2433, 0.3484, 0.3546
Android (android.graphics.Color)	4292658607 (0xFFDCC5AF)
YUV	201.3690, -12.9999, 16.3394
Hunter-Lab	76.3173, 0.2761, 15.5226

# Details

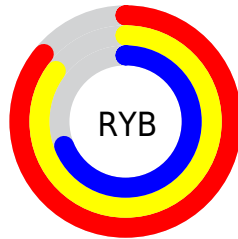
The Decimal color **14468527** is a light color, and the websafe version is hex **CCCCCC**. A complement of this color would be **11519708**, and the grayscale version is **13224393**.

A 20% lighter version of the original color is **16776935**, and **10850171** is the 20% darker color. If you saturate the color by 10%, you get **14465689**, and if you desaturate by 10%, it is **14471365**.

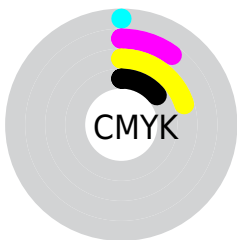
# Distribution



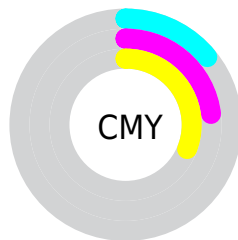
- Red (86%)
- Green (77%)
- Blue (69%)



- Red (86%)
- Yellow (85%)
- Blue (69%)



- Cyan (0%)
- Magenta (10%)
- Yellow (20%)
- Black (14%)



- Cyan (14%)
- Magenta (23%)
- Yellow (31%)

# Brightness & Saturation Gradients

These gradients show how the Decimal color 14468527 changes by changing the brightness by 10 percent. The first figure shows a shift by +10% for each color and the second figure -10%.

Similar to the brightness gradients but the following saturation gradients show a change of the Decimal color 14468527 by changing the saturation by 10% instead.



 14468527

 14468527

16777215

 12626580

 16776935

 10850171

 9074274

 7363914

 5719603

 4140830

 2693638

 1048576

 0

 14468527

 14468527

 14465689

 14471365

 14462851

 14474203

 14459757

 14477297

 14456919

 14480127

 14454081

 14482943

 14451243

 14483455

 14448149

 14445568

# Harmonies

## Analogous

The Analogous color harmony consists of three colors that are next to each other on the color wheel.



15057335



14468527



13552302

# Triad

The Triadic color harmony groups three colors that are evenly spaced from another and form a triangle on the color wheel.



14468527



10998222



13812957

# Complementary

The Complementary color scheme is a pair of colors which are on the opposite of each other on the color wheel.



14468527



11519708

# Split Complementary

Split-complementary colors differ from the complementary color scheme. The scheme consists of three colors, the original color and two neighbors of the complement color.



12699876



14468527



10997979

# Square

The Square scheme is like the rectangle color scheme, but the four colors are evenly spaced on the color wheel.



14468527



11587776



11652578



14729426

# Rectangle

The Rectangle color scheme consists of four colors that form a rectangle on the color wheel.



14468527



12897457



11652578



13485536

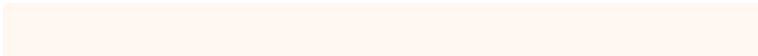


# Sweetspot

The Sweet Spot groups the original color and five complimentary colors.



14468527



16775152



14462918



8420215



0



8421504



# Same Dimension

The Same Dimension uses a secret algorithm to generate beautiful new colors.



14468527



16768703



14474159



7235683



11359488



3020288

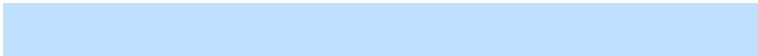


# Inverse Universe

The Inverse Universe completely reimagines the original color for something new.



11519708



12574975



11514076



6514798



22957

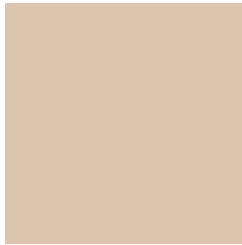


5934



# Previews

## White Background



This preview shows how the Decimal color 14468527 looks on a white background.

## Color Contrast Check

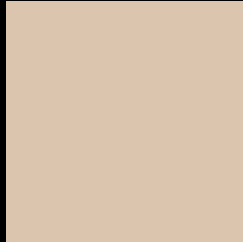
Large Text (above 18pt) WCAG AA × Fail

Any Text WCAG AA × Fail

Large Text (above 18pt) WCAG AAA × Fail

Any Text WCAG AAA × Fail

# Black Background



This preview shows how the Decimal color 14468527 looks on a black background.

## Color Contrast Check

Large Text (above 18pt) WCAG AA ✓ Pass

Any Text WCAG AA ✓ Pass

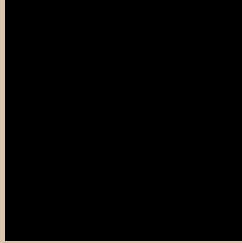
Large Text (above 18pt) WCAG AAA ✓ Pass

Any Text WCAG AAA ✓ Pass

If you want to check with other color combinations, try the [Color Contrast Checker](#).



## Decimal 14468527 Background



This preview shows how black text looks on a background with the Decimal color 14468527.



This preview shows how white text looks on a background with the Decimal color 14468527.

# Color Blindness Simulation

Color vision deficiency is a very complex topic, and I could not describe the different causes any better than Wikipedia does, so if you want to learn more, you should check out their [article about color blindness](#).

## Dichromacy





**Tritanopia**  
14729423

# Trichromacy



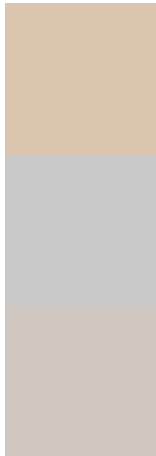
**Original Color**  
14468527

**Protanomaly**  
14075824

**Deuteranomaly**  
14860976

**Tritanomaly**  
14664387

# Monochromacy



**Original Color**  
14468527

**Achromatopsia**  
13224393

**Achromatomaly**  
13682880

# CSS Examples

## Text

The CSS property to change the color of the text to Decimal 14468527 is called "color". The color property can be set on classes, ids or directly on the HTML element.

This example shows how text in the color #DCC5AF looks like.

```
.text, #text, p{  
    color:#DCC5AF  
}
```

If you want to add a text shadow in that color use the text-shadow property, you can generate a text shadow directly with our [CSS Text Shadow Generator](#).

Here you see how black text with a 4 pixel #DCC5AF colored shadow looks like.

```
.shadow{ text-shadow: 4px 4px 2px #DCC5AF  
}
```

## Border

The CSS property to change the border of an element to Decimal 14468527 is called "border". The border property can be set on classes, ids or directly on the HTML element.

This example shows the color as border, it can be applied via the CSS property "border" or "border-color".

```
.border, #border, table{ border:4px solid  
#DCC5AF }
```

If only the border color should be changed use the property `border-color`.

```
.border{ border-color:#DCC5AF }
```

If you want to add a box shadow in that color use:

Here you see how a box with a 4 pixel #DCC5AF colored shadow looks like.

```
.boxshadow{ -moz-box-shadow:4px 4px 4px  
4px #DCC5AF; -webkit-box-shadow:4px 4px  
4px 4px #DCC5AF; box-shadow:4px 4px 4px  
4px #DCC5AF }
```

# Background

The CSS property to change the background color of an element to Decimal 14468527 is called "background". The background property can be set on classes, ids or directly on the HTML element.

```
.background, #background, body{  
background:#DCC5AF }
```

If only the background color should be changed can be used:

```
.background{ background-color:#DCC5AF }
```

This example shows the color as background, it is applied via the CSS property "background".

To optimize and compress your CSS code, you can use our [online CSS compressor and optimizer](#) based on csstidy. If you want to create a linear or radial gradient as background or border, check our [CSS Gradient Generator](#).



Hey! You found this booklet interesting? Support Converting Colors with the new Membership Option!

The pro membership hides all ads, plus gives you double the colors in the color bucket, and more awesome pro features!

**[Learn more, Memberships starting at \\$2.50/m!](#)**

**Follow me  
on Twitter!**

@ConvertingColor