

Converting Colors

Decimal(14468784)

Have a look what the booklet for
Decimal(14468784) contains.

Decimal(14468784)	3
<i>Conversions</i>	4
<i>Details</i>	6
<i>Harmonies</i>	11
<i>Previews</i>	23
<i>Color Blindness Simulation</i>	26
<i>CSS Examples</i>	29

Color

Decimal(14468784)

Conversions

Conversions Part 1

Format	Color
Hex	DCC6B0
RGB	220, 198, 176
RGB Percent	86%, 78%, 69%
CMY	0.1373, 0.2235, 0.3098
CMYK	0.00, 0.10, 0.20, 0.14
HSL	30°, 39%, 78%
HSV	30°, 20%, 86%
XYZ	57.5458, 58.7384, 49.3790
YIQ	202.0700, 20.1740, -2.1780

Conversions

Conversions Part 2

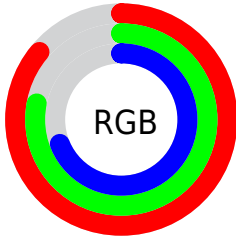
Format	Color
R _Y B	220, 220, 176
Decimal	14468784
CIE Lab	81.15, 4.25, 13.84
CIE LCh	81, 14.475, 72.931
Yxy	58.7384, 0.3474, 0.3546
Android (android.graphics.Color)	4292658864 (0xFFDCC6B0)
YUV	202.0700, -12.8525, 15.7246
Hunter-Lab	76.6410, -0.0953, 15.4488

Details

The Decimal color **14468784** is a light color, and the websafe version is hex **CCCCCC**. A complement of this color would be **11585244**, and the grayscale version is **13290186**.

A 20% lighter version of the original color is **16777192**, and **10850427** is the 20% darker color. If you saturate the color by 10%, you get **14465946**, and if you desaturate by 10%, it is **14471622**.

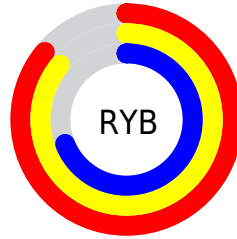
Distribution



Red (86%)

Green (78%)

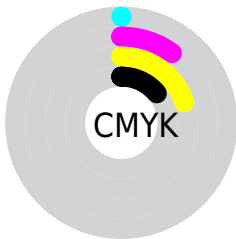
Blue (69%)



Red (86%)

Yellow (86%)

Blue (69%)

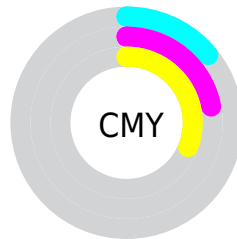


Cyan (0%)

Magenta (10%)

Yellow (20%)

Black (14%)



Cyan (14%)

Magenta (22%)

Yellow (31%)

Brightness & Saturation Gradients

These gradients show how the Decimal color 14468784 changes by changing the brightness by 10 percent. The first figure shows a shift by +10% for each color and the second figure -10%.

Similar to the brightness gradients but the following saturation gradients show a change of the Decimal color 14468784 by changing the saturation by 10% instead.

 14468784

 14468784


16777215

 12626837

 16777192

 10850427

 9074531

 7364171

 5719604

 4141087

 2693895

 1048832

 0

 14468784

 14468784

 14465946

 14471622

 14463108

 14474460

 14460270

 14477298

 14457432

 14480127

 14454594

 14482943

 14451756

 14483455

 14448918

 14446080

Harmonies

Analogous

The Analogous color harmony consists of three colors that are next to each other on the color wheel.



15057592



14468784



13552303

Triad

The Triadic color harmony groups three colors that are evenly spaced from another and form a triangle on the color wheel.



14468784



11064015



13878493

Complementary

The Complementary color scheme is a pair of colors which are on the opposite of each other on the color wheel.



14468784



11585244

Split Complementary

Split-complementary colors differ from the complementary color scheme. The scheme consists of three colors, the original color and two neighbors of the complement color.



12765668



14468784



11063515

Square

The Square scheme is like the rectangle color scheme, but the four colors are evenly spaced on the color wheel.



14468784



11653569



11718115



14729682

Rectangle

The Rectangle color scheme consists of four colors that form a rectangle on the color wheel.



14468784



12897715



11718115



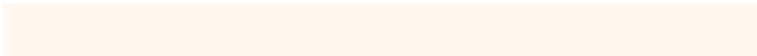
13551328

Sweetspot

The Sweet Spot groups the original color and five complimentary colors.



14468784



16775152



14463174



8420215



0



8421504

Same Dimension

The Same Dimension uses a secret algorithm to generate beautiful new colors.



14468784



16769218



14474416



7235683



11360000



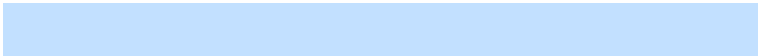
3020544

Inverse Universe

The Inverse Universe completely reimagines the original color for something new.



11585244



12771583



11579612



6514798



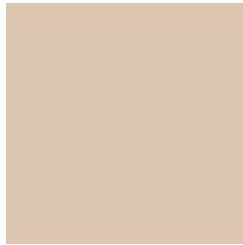
22445



5934

Previews

White Background



This preview shows how the Decimal color 14468784 looks on a white background.

Color Contrast Check

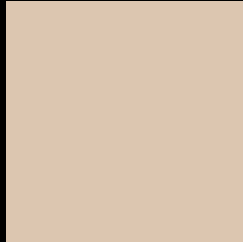
Large Text (above 18pt) WCAG AA × Fail

Any Text WCAG AA × Fail

Large Text (above 18pt) WCAG AAA × Fail

Any Text WCAG AAA × Fail

Black Background



This preview shows how the Decimal color 14468784 looks on a black background.

Color Contrast Check

Large Text (above 18pt) WCAG AA ✓ Pass

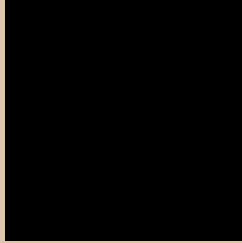
Any Text WCAG AA ✓ Pass

Large Text (above 18pt) WCAG AAA ✓ Pass

Any Text WCAG AAA ✓ Pass

If you want to check with other color combinations, try the [Color Contrast Checker](#).

Decimal 14468784 Background



This preview shows how black text looks on a background with the Decimal color 14468784.



This preview shows how white text looks on a background with the Decimal color 14468784.

Color Blindness Simulation

Color vision deficiency is a very complex topic, and I could not describe the different causes any better than Wikipedia does, so if you want to learn more, you should check out their [article about color blindness](#).

Dichromacy





Tritanopia
14729680

Trichromacy



Original Color

14468784

Protanomaly

14076081

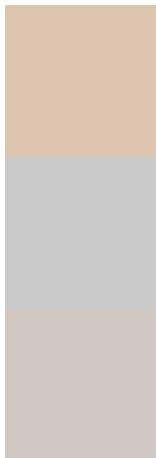
Deuteranomaly

14861233

Tritanomaly

14664644

Monochromacy



Original Color

14468784

Achromatopsia

13290186

Achromatomaly

13748673

CSS Examples

Text

The CSS property to change the color of the text to Decimal 14468784 is called "color". The color property can be set on classes, ids or directly on the HTML element.

This example shows how text in the color #DCC6B0 looks like.

```
.text, #text, p{  
  color:#DCC6B0  
}
```

If you want to add a text shadow in that color use the text-shadow property, you can generate a text shadow directly with our [CSS Text Shadow Generator](#).

Here you see how black text with a 4 pixel #DCC6B0 colored shadow looks like.

```
.shadow{ text-shadow: 4px 4px 2px #DCC6B0  
}
```

Border

The CSS property to change the border of an element to Decimal 14468784 is called "border". The border property can be set on classes, ids or directly on the HTML element.

This example shows the color as border, it can be applied via the CSS property "border" or "border-color".

```
.border, #border, table{ border:4px solid  
#DCC6B0 }
```

If only the border color should be changed use the property `border-color`.

```
.border{ border-color:#DCC6B0 }
```

If you want to add a box shadow in that color use:

Here you see how a box with a 4 pixel #DCC6B0 colored shadow looks like.

```
.boxshadow{ -moz-box-shadow:4px 4px 4px  
4px #DCC6B0; -webkit-box-shadow:4px 4px  
4px 4px #DCC6B0; box-shadow:4px 4px 4px  
4px #DCC6B0 }
```

Background

The CSS property to change the background color of an element to Decimal 14468784 is called "background". The background property can be set on classes, ids or directly on the HTML element.

```
.background, #background, body{  
background:#DCC6B0 }
```

If only the background color should be changed can be used:

```
.background{ background-color:#DCC6B0 }
```

This example shows the color as background, it is applied via the CSS property "background".

To optimize and compress your CSS code, you can use our [online CSS compressor and optimizer](#) based on csstidy. If you want to create a linear or radial gradient as background or border, check our [CSS Gradient Generator](#).

Hey! You found this booklet interesting? Support Converting Colors with the new Membership Option!

The pro membership hides all ads, plus gives you double the colors in the color bucket, and more awesome pro features!

[Learn more, Memberships starting at \\$2.50/m!](#)

**Follow me
on Twitter!**

@ConvertingColor