

Converting Colors

Decimal(14469074)

Have a look what the booklet for
Decimal(14469074) contains.

Decimal(14469074)	3
<i>Conversions</i>	4
<i>Details</i>	6
<i>Harmonies</i>	11
<i>Previews</i>	23
<i>Color Blindness Simulation</i>	26
<i>CSS Examples</i>	29

Color

Decimal(14469074)

Conversions

Conversions Part 1

Format	Color
Hex	DCC7D2
RGB	220, 199, 210
RGB Percent	86%, 78%, 82%
CMY	0.1373, 0.2196, 0.1765
CMYK	0.00, 0.10, 0.05, 0.14
HSL	329°, 23%, 82%
HSV	329°, 10%, 86%
XYZ	61.5715, 60.7156, 69.4469
YIQ	206.5330, 8.9850, 7.8730

Conversions

Conversions Part 2

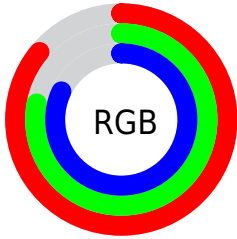
Format	Color
R _Y B	220, 199, 210
Decimal	14469074
CIE Lab	82.23, 9.24, -2.80
CIE LCh	82, 9.660, 343.128
Yxy	60.7156, 0.3211, 0.3167
Android (android.graphics.Color)	4292659154 (0xFFDCC7D2)
YUV	206.5330, 1.7092, 11.8106
Hunter-Lab	77.9202, 4.6878, 1.7016

Details

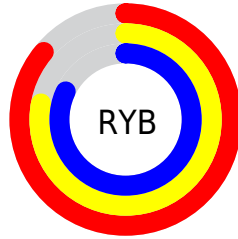
The Decimal color **14469074** is a light color, and the websafe version is hex **CCCCCC**. A complement of this color would be **13098193**, and the grayscale version is **13619151**.

A 20% lighter version of the original color is **16777215**, and **10850716** is the 20% darker color. If you saturate the color by 10%, you get **14463432**, and if you desaturate by 10%, it is **14474716**.

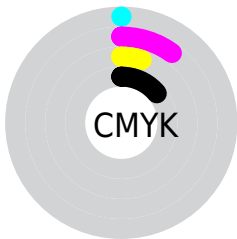
Distribution



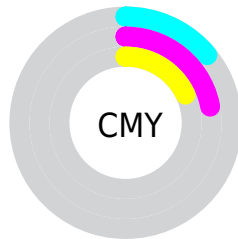
- Red (86%)
- Green (78%)
- Blue (82%)



- Red (86%)
- Yellow (78%)
- Blue (82%)



- Cyan (0%)
- Magenta (10%)
- Yellow (5%)
- Black (14%)



- Cyan (14%)
- Magenta (22%)
- Yellow (18%)

Brightness & Saturation Gradients

These gradients show how the Decimal color 14469074 changes by changing the brightness by 10 percent. The first figure shows a shift by +10% for each color and the second figure -10%.

Similar to the brightness gradients but the following saturation gradients show a change of the Decimal color 14469074 by changing the saturation by 10% instead.

■ 14469074

■ 14469074

16777215

■ 12627126

■ 10850716

■ 9140098

■ 7429992

■ 5785424

■ 4272441

■ 2824996

■ 1507599

■ 0

 14469074

 14469074

 14463432

 14474716

 14457789

 14480359

 14452147

 14483441

 14446504

 14483452

 14440862

 14483455

 14435219

 14429577

 14423934

 14418292

Harmonies

Analogous

The Analogous color harmony consists of three colors that are next to each other on the color wheel.



13879770



14469074



14731209

Triad

The Triadic color harmony groups three colors that are evenly spaced from another and form a triangle on the color wheel.



14469074



13684155



12046809

Complementary

The Complementary color scheme is a pair of colors which are on the opposite of each other on the color wheel.



14469074



13098193

Split Complementary

Split-complementary colors differ from the complementary color scheme. The scheme consists of three colors, the original color and two neighbors of the complement color.



12047056



14469074



12964031

Square

The Square scheme is like the rectangle color scheme, but the four colors are evenly spaced on the color wheel.



14469074



14273211



12374727



12505054

Rectangle

The Rectangle color scheme consists of four colors that form a rectangle on the color wheel.



14469074



14731203



12374727



11981526

Sweetspot

The Sweet Spot groups the original color and five complimentary colors.



14469074



16775163



13748188



8419965



0



8421504

Same Dimension

The Same Dimension uses a secret algorithm to generate beautiful new colors.



14469074



16770034



14469064



7234408



11337819



3014680

Inverse Universe

The Inverse Universe completely reimagines the original color for something new.



14469074



16770034



13098203



7234408



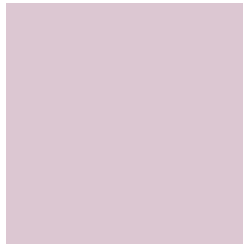
11337819



3014680

Previews

White Background



This preview shows how the Decimal color 14469074 looks on a white background.

Color Contrast Check

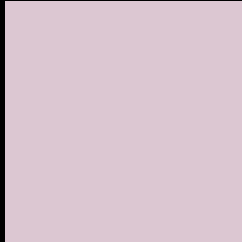
Large Text (above 18pt) WCAG AA × Fail

Any Text WCAG AA × Fail

Large Text (above 18pt) WCAG AAA × Fail

Any Text WCAG AAA × Fail

Black Background



This preview shows how the Decimal color 14469074 looks on a black background.

Color Contrast Check

Large Text (above 18pt) WCAG AA ✓ Pass

Any Text WCAG AA ✓ Pass

Large Text (above 18pt) WCAG AAA ✓ Pass

Any Text WCAG AAA ✓ Pass

If you want to check with other color combinations, try the [Color Contrast Checker](#).

Decimal 14469074 Background



This preview shows how black text looks on a background with the Decimal color 14469074.




This preview shows how white text looks on a background with the Decimal color 14469074.

Color Blindness Simulation

Color vision deficiency is a very complex topic, and I could not describe the different causes any better than Wikipedia does, so if you want to learn more, you should check out their [article about color blindness](#).

Dichromacy





Tritanopia
14534358

Trichromacy



Original Color
14469074

Protanomaly
13880020

Deuteranomaly
14534354

Tritanomaly
14534357

Monochromacy



Original Color
14469074

Achromatopsia
13619151

Achromatomaly
13946064

CSS Examples

Text

The CSS property to change the color of the text to Decimal 14469074 is called "color". The color property can be set on classes, ids or directly on the HTML element.

This example shows how text in the color #DCC7D2 looks like.

```
.text, #text, p{  
  color:#DCC7D2  
}
```

If you want to add a text shadow in that color use the text-shadow property, you can generate a text shadow directly with our [CSS Text Shadow Generator](#).

Here you see how black text with a 4 pixel #DCC7D2 colored shadow looks like.

```
.shadow{ text-shadow: 4px 4px 2px #DCC7D2
}
```

Border

The CSS property to change the border of an element to Decimal 14469074 is called "border". The border property can be set on classes, ids or directly on the HTML element.

This example shows the color as border, it can be applied via the CSS property "border" or "border-color".

```
.border, #border, table{ border:4px solid
#DCC7D2 }
```

If only the border color should be changed use the property `border-color`.

```
.border{ border-color:#DCC7D2 }
```

If you want to add a box shadow in that color use:

Here you see how a box with a 4 pixel #DCC7D2 colored shadow looks like.

```
.boxshadow{ -moz-box-shadow:4px 4px 4px  
4px #DCC7D2; -webkit-box-shadow:4px 4px  
4px 4px #DCC7D2; box-shadow:4px 4px 4px  
4px #DCC7D2 }
```

Background

The CSS property to change the background color of an element to Decimal 14469074 is called "background". The background property can be set on classes, ids or directly on the HTML element.

```
.background, #background, body{  
background:#DCC7D2 }
```

If only the background color should be changed can be used:

```
.background{ background-color:#DCC7D2 }
```

This example shows the color as background, it is applied via the CSS property "background".

To optimize and compress your CSS code, you can use our [online CSS compressor and optimizer](#) based on csstidy. If you want to create a linear or radial gradient as background or border, check our [CSS Gradient Generator](#).

Hey! You found this booklet interesting? Support Converting Colors with the new Membership Option!

The pro membership hides all ads, plus gives you double the colors in the color bucket, and more awesome pro features!

[Learn more, Memberships starting at \\$2.50/m!](#)

**Follow me
on Twitter!**

@ConvertingColor